

The Painswick Beacon

Sine praeiudicio

Volume 32 Number 6

September 2009

Access non-stop

"Back in early 2008", writes David Bishop, "following requests from various individuals, the St. Mary's Church Council agreed to look into the possibility of converting the church yard steps behind the New Street bus stop into a ramp in order to make it easier for the elderly, especially those in chairs or buggies, to access the church yard and the shops etc. Since this involved Parish Council land and church



Almost certainly exactly 100 years ago - no steps!

land, this turned into a joint project 50% funded by the church and Parish Council. Planning permission and Listed Building Consent

were obtained from Stroud District Council earlier this year.

At the time of writing, the works to complete this project are well in hand and should have been finished before this edition of the Beacon is distributed. Thanks are due to Richard Falconer for drawing up plans and help with the planning application and to Paul Morris and his colleagues for completing the work. We are considering a formal opening of this new access - probably on Clypping Sunday 20th September."



Gateway put On-Hold

Last month The Gateway Trustees published the decision not to proceed with Gateway. I do not propose to restate the factors the Trustees considered leading to the vote. However, should anyone desire individual clarification please email trustees@painswickgateway.org.uk or our Manager, Leslie Brotherton, (contact details on the back page of the Beacon).

The bulk of funds will have been returned to our supporters, or be in the post, by the time this is published.

It is most important that we do not regard the issue of rescuing the Library as a lost cause. We have achieved a great deal in the last 3 years and for the Trustees to just walk away would be irresponsible. The following points are worth considering:

- While there remains a possibility of salvage, the vision and the research work, the organisation and the network of connections should be kept intact in case it is needed.
- A government White Paper will be issued in September that may indicate funding for local libraries. The Sustainable Communities Act 2007, hitherto not paid much attention by Gloucestershire County Council, may pave the way for this. We think this is why the County Council are going to review their own policy towards the provision

of library services in due course. We need to be ready in case they want to reopen negotiations with the community.

- We have fresh evidence of the existence of genuine investors/local benefactors, sympathetic to the principle of saving the Library, who might yet be able to help us overcome the funding issues that were largely influencing the decision not to proceed in July. It is now a question of circumstances with the County Council.
- The "Gateway" between the Car Park and St Mary's remains a goal that the community needs to achieve, for safety and for local regeneration.
- If we do not at least keep a "watch" on the future of the Library, we could be exposed to the County Council making the building available to another agency that the community might find unpalatable.

Gateway for the time being is therefore being put on-hold. In the event that we are presented with an opportunity to re-kindle, it will be with a different prospectus and subject to new public approval.

It is difficult for the Trustees to express adequately our appreciation of the community's broad commitment to Gateway, steadfast over a much longer period than we had envisaged. We remain committed to finding a way of sustaining and improving the library and its associated amenities for the community of Painswick.

Edward Young Chairman

Clypping Service

The annual Clypping service at St Mary's will be held at 3.00pm on Sunday 20th September.

This is our patronal festival which we will celebrate with an outdoor service that includes 'hugging' the church building. The Salvation Army band from Gloucester will be providing the music and the main speakers will be Stephen Bowen, the Stroud Area Dean and David Drew MP. The traditional childrens gift of a bun and a coin will be distributed.

After the service there will be teas served in the churchyard and you are welcome to bring a picnic. There will be a helium balloon race and a Fair Trade quiz with chocolate prizes for the young at heart. Please feel free to join us on this special occasion for the church and all those who live in Painswick.

David Bishop

Churchwarden on behalf of the PCC

On other pages this month - directory data, the bow-wow, fleur-de-ley, the artfest displayed, leavers leaving, community lunches, composting + allotments, sound of music, acid test for cat, wedding joy, beat the flu, Chris fired up, lunch and supper, the cricket lass.



PARISH COUNCIL

A special Parish Council meeting was held on the 5th August to consider two items. About 10 members of the public attended.

Allotments

The Chairman, Terry Parker, said that following the meeting of the 29th July, closed to the public and press, for the purpose of taking legal advice on the claim for Judicial Review by Philip Rowlands of Gyde Barn, he now recommended that the PPC rescind the decisions taken on the 15th July and 18th March to negotiate a lease on Gyde Field for allotments. The main reason was the potential financial cost to PPC estimated at £10,000 for the first stage and up to £60,000 for the second stage. Even if PPC won its case, the court often expects councils, as government bodies, to pay their own costs. Terry Parker himself and many councillors expressed their great disappointment at the outcome and he added that the interests of the community would not be best served by the financial burden contesting the Judicial Review would impose. Members of the public also

expressed their disappointment, one calling the decision “undemocratic”, another calling the Gyde Field allotment opponents “not members of the community” and saying “you should be ashamed of yourselves”. A further member of the public said that PPC “should show more backbone” and stand up to the Gyde Field allotment opponents. Another person thanked PPC for all its hard work and appreciated the difficult position the Council was in. Terry Parker stressed that PPC would now look for alternative sites for allotments. The vote to rescind the decisions of the 15th July and 18th March was carried unanimously.

Painswick Gateway

Terry Parker told that meeting that Edward Young, chairman of the Gateway trustees, had asked for the loan of £1000 which PPC made to Gateway be written off. After much discussion councillors agreed that this would be setting an undesirable precedent. Ela Pathak Sen proposed that Gateway repay the loan from PPC in full and that those who pledged financial support should bear the costs. This was carried by a majority vote.

Flu vaccinations

Our annual immunisation programme to protect vulnerable patients from the influenza virus will commence in October this year.

All the doctors at Painswick Surgery strongly recommend that everyone over the age of 65 is vaccinated against influenza. We would also suggest that anyone who suffers from diabetes, asthma, kidney/liver, heart and lung disease is also vaccinated as they are especially at risk.

Last year, we ran two very successful Saturday clinics which were very well received by patients and staff alike. We will therefore be holding clinics on Saturday 3rd October and Saturday 31st October here at the surgery from 9.00am through to 4.00pm with a short break for lunch.

Please contact the surgery to book a convenient appointment – please don’t wait for a letter inviting you to come in – we would like as many people as possible to take up this offer. (We won’t be organising ‘flu clinics at the surgery during the week in order to reduce congestion in the car park.)

Nicola Hayward
Practice Manager

Business, club, society, service, agency?

DIRECTORY 2010 – your call

The Painswick Directory is delivered every year with the December issue of the Beacon, free of charge. It provides a very valuable source of information for both residents and our visitors, and, of course, is of great benefit to those businesses, services, clubs etc. which are included in it. We are increasingly finding that it is receiving 'hits' for the copy we post on our web site, not least from people moving into the area.

If you run a service, business, society etc it is in your interest to ensure the relevant and correct details are entered in the next edition. We depend entirely on the information given to us by club secretaries, business proprietors and so on, and we need these details as soon as possible if you wish to be included in the 2010 edition. Inclusion costs nothing.

If you are already in, please check the details and let us know if there are any changes to be made. If you wish your entry to be removed, you should let us know as soon as possible.

This is a free community resource and it is important that it is up-to-date, comprehensive and accurate. Please send your details via the Beacon’s email address – beacon@painswick.net – or put it in the Beacon box in New Street. After the end of October will be too late.

Wick Street Security
Locksmith & Secure Solutions
Moved Home or Office? Who's Got Keys?
All types of security equipment supplied & fitted to insurance standards.
Lock opening service & period lock restoration.
Tel: 01452 812201 Mob: 07812 540178
Email: info@wickstreetsecurity.com

PC Repairs & Maintenance

TEL 01453 766312
MOB 07949792501
www.pccomputerrepairs.co.uk
For all your computer needs
Local friendly service
No call out charge
New systems, upgrades, memory harddrives, broadband installations
problem solving, virus & spyware removal
System backup & system setups
Tutoring available for the novice user

THE CHAIRMAN
Antiques & Crafts

a distinctive mix of antiques, unusual hand-crafted gifts and interesting items for the home
The Old Bakery New Street Painswick GL6 6UN
01452 810820
Open Tuesday to Saturday 10am - 5pm

Homelessness

Homelessness is probably an issue about which few people in Painswick have personal experience. However the name Shelter is one we all recognize.

The images of 'cardboard city' may have disappeared from our television screens two decades ago but the homeless are still on the streets.

The issues which result in young people becoming homeless are particularly complex, but a new project involving Peer Educators from Shelter and drama students from Gloucestershire University is attempting to explore this through the Forum Theatre Performance. This performance will take place on 8th September at 6.45pm in the Painswick Centre and will be exploring what happens when relationships between parents and children breakdown and how those involved can influence the outcome. It is aimed at anyone interested in these issues and promises to be excellent drama. I was looking for some serious drama to explore with the Young Painswick Players and Shelter was looking for youth groups with which to be involved. There is no charge for entry but any donations will be given to Shelter. It should be pointed out that some of the issues may not be suitable for children under thirteen years of age.

Lesley Wolowicz

Chris has what it takes ... have you?

Your local retained firefighters need you. Thus went out the call a year ago and Chris Garbett decided to rise to the challenge. A year on and Chris has certainly not regretted his decision, despite the rigour of the procedure involved in becoming a recruit to this fantastic service.

Chris has lived in Painswick for fifteen years and says he always wanted to be part of the fire and rescue service, but until recently his job did not fit in to the time and distance requirements. Now he works more locally and last year's Beacon article calling for recruits prompted him into action. He attended the recruitment evening and the process started. Because his work is based in Quedgeley, he will be available in Gloucester during working hours and in Painswick at weekends and evenings. This suits him well.



Chris explains that the process is quite long – at least twelve months before a new recruit can be fully active. There are psychometric, physical and medical tests plus interviews in order to be accepted. After this stage the real training starts, very rigorous and intensive. However, this is very significant because it both tests the real commitment of trainees and, assuming they stay the course, results in a highly skilled member of a thoroughly professional team. Chris is not surprised the training is so detailed because, as he says, the standards have become so thorough and the approach is very professional. He is impressed by the perceived need to continually update personal development.

Chris is happy to make the necessary commitment as he says on a personal level it is both exciting and challenging. However, he also sees it as an essential service to the community. "It is special," he says. He started attending the weekly Monday evening training sessions early in July. "They bring everyone together and keep you up to par. You realise it is the ultimate team job." Chris says he already feels integrated which is important for the team. He also points out that the Painswick crew is a group of real characters who make the Monday evening sessions an interesting and sociable occasion. He says there is a real pride in the Painswick station.

Our local retained fire and rescue team are involved in a range of activities including home safety visits when they carry out a complete fire safety check, even fitting safety alarms, and all free of charge. They have in the past few years proved to be our local heroes during unforeseen crises. They are all part-time and all very positive about the many benefits of being in the team. They know that they provide an invaluable and essential service to our community and are proud to do so.

The Painswick team is still not up to its full complement and is eager to attract more recruits. A recruitment evening will be held at the station in Pullens Road on Thursday, 10 September when you can find out more about the service. If you are aged 18-65 you are eligible and, just think, you could be part of this great team with the possibility of saving a life. At present there are no women in the Painswick team, so come on girls.

As Chris says, "If you're minded to do it, just come up and find out. They're a great group of people to work with and it's a service in your own community and very rewarding."

Why not come along and see for yourself? Everyone is welcome between 7.00-9.00pm.

Carol Maxwell



Some of the local fire and rescue team.

JOE REED 
General Plumbing
And Minor Domestic Electrical work
01452 813499 07967 742601
City & Guilds and EAL certified
For more details please visit:
www.joereed.co.uk

**Harescombe
Construction Ltd**
New Builds - Design & Build -
General Building -
Renovations - Alterations &
Extensions - Groundworks -
Roofing
Please call Chris anytime on:
07831 127699

**Cardynham House
BISTRO**
Come and enjoy
our Romanian
atmosphere with
Catalina and Marin
Specialities and Saver
menus available
01452 810030

Letters

The inclusion of letters, maximum 150 words, in these columns does not imply that the Beacon committee endorses the views expressed, or otherwise.

Local pie

Ralph Kenber narrates:
 While I was on stewarding duty at our church recently, the following scintillating conversation took place with a visitor, Mrs. Phillips from Worcester:
 She: Have you lived in Painswick long?
 Me: Not really all that long.
 She: How long?
 Me: 17 years – not long by Painswick standards.
 She: Then you probably wouldn't know.
 Me: Know what?
 She: The origin of Painswick's "Puppy dog pie".
 Me: I'll try to find out more for you.
 I'd be most grateful for information about this extraordinary-sounding dish – not that I would try it out myself, it doesn't sound all that appetising!

Minded that there may be others lacking this local knowledge, we offer some information elsewhere on this page. Ed.

20mph Speed Restriction

David Gunton writes from Tibbiwell:
 Your comments with regard to the 20mph Restriction Area, rather than to quote "the Gloucestershire Highway Official not having driven around the village".
 I would suggest that the writer of this article would appear not to know the village at all. Any day he or she would like to join me in Tibbiwell I will show them speeding cars in excess of not 20mph but over 30mph. Gratuitous comments like this are totally unnecessary.



Jude Wells Photography

Capture that special moment

Portraits in a studio or your own home.
 Events, birthday parties and anniversaries.
 Corporate and marketing photography.
 Prints from around the local area.
 Commissions gladly taken on request.

All packages include a CD of all images, no hidden costs.

For more information please call
 01452 814 565 or 07958 528 234
 or visit www.JudeWellsPhotography.co.uk

Barks and Bites from Bow-wow-land

Motivated by the letter received from Ralph Kenber, our attention was drawn to the modest little publication by our ever-vigilant Local History Society under this heading. For a mere £1.00 copies are available at the Post Office, the Little Fleece bookshop and The Royal Oak or by telephoning the LHS on 813387, and we commend the translation for attention ready for such as a Christmas stocking or an unbirthday present.

Even though uncensored, and without any brown envelope, you would possess essential reading of
The Painswick Legend of Longevity - referring to 'fleshly coherence of parts'
Ye Ballade of Ye three Old Men of Painswick - and how a pilgrim turned tail
"Bow-Wow" a feast-tide amenity in verse - and what to have on the seat of ones pants
The Truth about the Last of the Three Old Men of Painswick - by the Painswick "Watch Dog" of pre-sewerage days.
 Oh! It also contains short accounts of possible origins of the legend about the 'pie'.

while Leonard Chittenden says:
 Yet another half-baked traffic proposal for Painswick!

As a frequent walker around Painswick I observe that the roads where there is a mix of vehicular and pedestrian traffic are generally narrow and narrowed even more by parked cars. Traffic rarely exceeds 20mph on these streets and the existing 30mph limit appears satisfactory.

- My observation of the places where there is a high risk to pedestrians are
1. The 'pinch point' of the A46 New St at the junction of Edge Road – where vehicles often mount the pavement and lorry wing mirrors overhang the pavements.
 2. The A46 New St near the junction with Victoria Street – due to the lack of a much needed pedestrian crossing.
 3. Stamages Lane – due to vehicles travelling too fast on a twisting downhill road with no pavement.

The above are specific risk areas where public money could, and should, be put to better use.

Gyde Field allotments

Tessa Scot-Simmonds has written from Gyde House:
 Many will welcome the decision of the Painswick PC to withdraw from this project: albeit with the threat of a Judicial Review, where a Court minutely examines the procedures used to reach their decision. HMG issues the guidelines. Costs fall on the unsuccessful party.
 To some who attended the 1st Public

Consultation in early summer it seemed a done deal.

In today's climate of imposed orders and official bullying we thought it too late to change the mindset of the PPC – "don't confuse us with facts, we have made up our mind!" It appeared a piece of social engineering designed to please too few people in this pleasant community of ours...lets hope the PPC now appreciate that their role is to manage the affairs for the majority, but to listen to the views of all our community - before the decision is taken. This is how democracy works.

BNP

Jonathan Guinness writes from Hale Lane
 Am I the only inhabitant of Stroud constituency to be a bit fed up with the constant grandstanding of our MP, David Drew? You quote him as having complained to Parliament that members of the BNP beat up a local man for having assaulted their leader Nick Griffin. "I am not prepared to have the BNP anywhere near my constituency," he said.

Really? Is it up to any MP to say who shall, and who shall not, cross the constituency border into his patch?

If the beating up Mr. Drew complains of did take place, it is a matter for the police and the courts; and should a prosecution result it would surely weigh with the magistrate that even if grossly disproportionate it did follow an assault on Mr. Griffin.

PAUL COOKE

COMPLETE GARDEN MAINTENANCE

MOWING HEDGE CUTTING
 PATIOS PONDS

Free estimates
 Phone 01452 813738
 Mobile 07702 912392

Established over 16 years

A La Carte Private Hire

Tel: 01452 813268
 Mobile: 07748 235164

Sandra Walklett

Any Distance – Airports, Seaports, etc
 Quotations Without Obligation

Top lunch

Age Concern Gloucestershire is pleased to announce that on Sunday 18th October we will be hosting an exclusive fundraising Sunday Lunch event in Painswick, hosted by The Cotswold Chef, Rob Rees MBE. Richmond Villages are generously supporting the event by allowing us to use the restaurant and kitchen at their Stroud Road complex.



Rob Rees in the Richmond Kitchen: With Mark Singleton, Head Chef of Richmond Village

If you would like to join Rob for lunch in these idyllic surroundings please get in touch today to book your place. Please note that tickets for this exclusive event are limited.

Tickets are priced at £20 per person for a traditional two-course lunch. Diners will be asked to arrive for 1.00pm. Call our Fundraising Team today: 01452.422660

As an additional gift you might like to consider buying an extra ticket or two to donate back to us. We will then offer these to older people in the local community whom we know to be at risk of isolation.

This event will be the culmination of the 2009 Great Sunday Lunch fundraising campaign in Gloucestershire. The Great Sunday Lunch is a national Age Concern event sponsored by Aunt Bessie's. It aims to highlight the problem of isolation and poor nutrition faced by many older people. It encourages supporters to raise money by holding their own special lunches or attending an event like this one at Richmond Village, Painswick.

Bridget Kemp

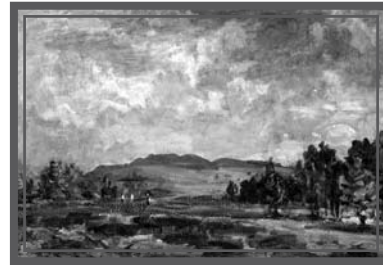
TV on the Beacon

We were recently flattered when we were approached, as was the Parish Council, to see if we could assist the producers of a forthcoming Sky Arts television series in high definition to be entitled 'Virgin Virtuosos'.

In each of the six programmes, artist and teacher John Myatt will have one day to teach a celebrity to paint a landscape. He will take them to a location which had inspired a great master, for example, where Constable painted The Hay Wain. During the day the guest artist will paint that landscape in their own style under John's guidance. John will also paint the landscape in the style of the great master, but not copying an existing painting, and in doing so talk about the techniques the artist used, as well as impart some art history about their work and life. The celebrity will be given both paintings to own.

One of the 'masters' being considered is Philip Wilson Steer and his 1915 representation entitled 'Painswick Beacon', now in the Tate Collection.

The Parish Council is directly helping identify exactly where Philip Steer sat while doing his superb painting, as requested by the Anglia ITV's Richard Byles. Any reader with suggestions is welcome to get in touch with us as well.



Short Matters

It is a tradition with those who enjoy short mat bowling that they get together over a meal, at least once a year.

Accompanied by guests they made 2009 no exception, and can be seen here in the Town Hall on the 18th August. Whenever possible they sup in the garden of a member, but the meteorological office counselled otherwise, and the outcome is clear for all to see.

The mat is down all day on Mondays, just about every week, with playing concentrated into Monday mornings and evenings. Unlike most sports, short mat bowling definitely does not require innate skills or, indeed, A1 fitness. Neither does age necessarily mean that techniques are any easier to learn. Not one member came to the Painswick Short Mat Bowling Club with advance prowess, and almost all had never touched a bowl in their life. There is pride in the fact that some graduated to outdoor bowling or larger indoor clubs and rinks, and individuals have moved into top-flight competition country wide. There is equal pride in the friendliness of the club itself, and the many friendships formed and the welcome extended to newcomers.

*Ken Gibson
Chairman*



Environmentally Sensitive Tree Surgery

Local family business
John, Clare & Zeb
Fully Insured
20 years experience

Painswick (01452) 812709

See Our Website

www.landcareservices.biz

DAVENPORT LANDSCAPES

ALL ASPECTS OF LANDSCAPE DESIGN & CONSTRUCTION

- NATURAL STONE WORK • PAVING
- BRICKWORK • DECKING • FENCING
- WATER FEATURES • TREE SURGERY
- TREE HOUSES • PLANTING & TURFING

01452 813660 or 07791 693439

Greyston Cottage, Pincot Lane, Pitchcombe,
Stroud, Gloucestershire, GL6 7QP.
mike@davenportlandscapes.co.uk
davenportlandscapes.co.uk

Brinkman Building Ltd

**Building, Plumbing
and Carpentry work.**

**Kitchens and
Bathrooms designed
and fitted.**

**01452-812924 - Evenings
07796-440101 - Mobile**

Gorgeous Singing and Glamour

Painswick Music Appreciation Group begins its winter Season on 17th September at 7.30pm in the Cotswold Room at the Painswick Centre. New members are especially welcome, so do come along and try us out.

But the Gorgeous Singing and Glamour refers to our first concert outing which is to Symphony Hall, Birmingham on 2nd November. Love is the theme of the concert, featuring the world famous soprano Renee Fleming, rated by many as the best lyric soprano singer in Opera anywhere at present. She is joined in the concert by the Royal Philharmonic Orchestra and will perform a series of Italian Operatic Arias (Puccini, Mascagni and Cilea), as well as Tatyana's Letter Scene; in addition, the orchestra will perform Romeo & Juliet by Prokofiev, and the Overture of the same name by Tchaikovsky.

As usual, non members are welcome to join us on this trip, which is sure to be a sell-out; our discounted tickets were reserved many months ago. Total cost for ticket and coach travel from Stamages Car Park (departing 4.30pm) to the front door of Symphony Hall is likely to be about £43. Full details can be obtained from Stewart Price on 814241, to whom reservations are required by 13th September.



Stewart Price

Painswick Singers

Our autumn term starts on Monday 7th September. We practise at 7.30pm each Monday in the Church Rooms and will be preparing to be 'The Pirates of Penzance' in our concert on 31st October. This will take place in Painswick Centre in association with the Family Haven.

New singers are always welcome. We have a professional conductor but no auditions are necessary before you join. Further information from our chairman, Jeff Clarke on 810919 or our treasurer John Dickinson on 812965.

Angela Newing - Publicity

A Great Movement (or two) for Nothing

The Painswick Music Society's audiences know a thing or two about movements that are Also Great Moments in the musical life of Painswick. There is one coming up that is free to all who come to its Annual General Meeting on Saturday 3rd October in St. Mary's Church Rooms at 7.00pm.

The Society's AGM (multo accelerando) is open to all interested in music – whether having attended our concerts or interested in finding out how our metronome ticks (tempo giusto) – to meet the organisers and to hear about their successes (grandioso maestoso) or the trials and tribulations (non marcato) involved. Apart from a refreshing recital (cello & piano) that follows, there will be refreshing substances in glasses (ma non troppo fluido) and on plates (ma non grosso) for all to enjoy – and all for nothing! (molto timpani e campanelle). We just want to meet you.

The recital will be given by local musicians Robina Sabourin and Robert Burgess. Their programme will include two movements from each of the Brahms and Chopin sonatas for cello and piano and will finish with an amusing Tarantella, a piece in folk style by English composer William Squire (1871-).

Robina Sabourin: After playing in the National Youth Orchestra, Robina Sabourin studied the cello, chamber music and orchestral playing at the Royal College and the Royal Academy of Music. After completing her studies she played in the Icelandic Symphony Orchestra and became a member of the Orchestra da Camera in Birmingham for ten years. She has since then worked in both teaching and performing with a long and happy association as cello teacher at Cheltenham College.

Robert Burgess: (Yes, our own RB) After studying at the Trinity College of Music, for which he received support from the Painswick Education trust, Robert Burgess gained the Trinity/Guildhall Performance Diploma in Piano Accompanying with Distinction and set out on a career as a professional accompanist. He has since performed extensively in public concerts and competitive festivals at Bath, Leamington Spa and Cheltenham as accompanist for both vocal and instrumental musicians. Most recently he joined two flautists and a cellist to form The Real Tonic Chamber Ensemble.

Maurice Maggs



Paul A Morris
General Building Ltd

Extension* Renovation*
Plumbing* Electrical Work*
Patios* Plastering*
Windows Doors & Conservatories*
City and Guilds

01452 814524 . mob 07818 087375


Cotswolds88hotel & Restaurant

Set menu lunch offer
2 courses for only £10
(Available Tuesday-Saturday)

Ambianza Beauty
Offering a full treatment menu
Open Wednesday-Sunday

T: 01452 813688
E: reservations@cotswolds88hotel.com
www.cotswolds88hotel.com

Cotswolds88hotel, Kemps Lane, Painswick, Gloucestershire, GL6 6YB

LAWNMOWERS

- SERVICED
- SHARPENED
- REPAIRED

ALSO:- RIDE-ON MOWERS, CHAIN-
SAWS, ROTAVATORS, STRIMMERS,
HEDGE-TRIMMERS ETC.
FREE COLLECTION AND DELIVERY

**CHELTENHAM
MOWER SERVICES**

01452 616169
Unit B3, Nexus, Hurricane Road
Gloucester Business Park, Gloucester GL3 4AG
Visit and Buy On-Line at
www.mowers-online.co.uk

**Tree Surgery
Garden Maintenance**

Man with a saw:
Use me for your tree pruning
and tree surgery
Flexible & local service
Rubbish disposed
Garden Maintenance

- Regular contract
- Winter maintenance
- Fencing
- Chipping

Firewood delivered locally
Fraser Hall
Brookthorpe Gloucestershire
07766 132903

Fully qualified and Insured

From the page, to Highgrove

Do you know that feeling of not wanting to finish a book because you are enjoying it so much? Well, that's how many of her audience felt when the delightful authoress Jane Bailey came to talk to Yew Trees WI in July - we just wanted her to go on and on! During Jane's talk entitled "Hatching a novel" she explained how she used old photographs as inspiration for the plots of two of her novels "Tommy Glover's Sketch of Heaven" and "Mad Joy". Although she has changed the place names, Jane, who was born and raised in Gloucestershire, has used the county as the setting for her stories. She explained that her novels are not autobiographical, and encouraged would-be-writers not to fear making things up. By reading extracts from her books she illustrated how important it is to create suspense in order to keep the reader's attention. Jane was so enthusiastic about her writing that we all felt encouraged to go home and start our first novel..... until we realised just how much hard work and effort goes in to writing a book - and for so little money.

To mark the 90th anniversary of the Gloucestershire Federation of WIs, The Duchess of Cornwall invited a representative from every Institute in the county to a reception at Highgrove. We were delighted when the name of our secretary, Meriel Middleton, was drawn from the hat to represent Yew Trees. Thankfully the afternoon of 22nd July was fine for Meriel and the 159 other ladies. On arrival they were entertained to tea and then to guided tours of Highgrove's extensive garden, followed by a reception in the Orangery, hosted by The Duchess (a member of Tetbury WI) who made sure she spoke to everyone who attended. Meriel described the afternoon as being very special; happy and relaxed, and one she will remember for a long time.

Ladies, do you know exactly what our Village Agent and our Neighbourhood Warden do? Maybe they can help you? Why not come along to our September meeting when Louise Kemp and Carol Novoth - a lovely, lively pair - will explain exactly what they do to enhance the lives of Painswick's residents. Tuesday, 22nd September at 7.30 pm in the Town Hall - don't forget!

Celia Lougher 812624



A seasonal academic tale

A mother passing by her son's bedroom was astonished to see the bed was nicely made, and everything was picked up. Then she saw an envelope, propped up prominently on the pillow.

It was addressed, 'Mum'. With the worst premonition, she opened the envelope and read the letter, with trembling hands.

'Dear Mum

It is with great regret and sorrow that I'm writing you. I had to elope with my new girlfriend, because I wanted to avoid a scene with Dad and you.

I've been finding real passion with Stacy, and she is so nice, but I knew you would not approve of her, because of all her piercing's, tattoos, her tight Motorcycle clothes, and because she is so much older than I am.

But it's not only the passion, Mum. She's pregnant.

Stacy said that we will be very happy. She owns a trailer in the woods, and has a stack of firewood for the whole winter. We share a dream of having many more children.

Stacy has opened my eyes to the fact that marijuana doesn't really hurt anyone. We'll be growing it for ourselves, and trading it with the other people in the commune, for all the cocaine and ecstasy we want.

In the meantime, we'll pray that science will find a cure for AIDS, so Stacy can get better. She sure deserves it!!


Don't worry Mum, I'm 15, and I know how to take care of myself. Someday, I'm sure we'll be back to visit, so you can get to know your many grandchildren.

Love, your son, Nicholas.'

"P.S. Mum, none of the above is true. I'm over at Jason's house. I just wanted to remind you that there are worse things in life than the school report that's on my desk"

I love you!

Call when it is safe for me to come home



price davis
CHARTERED ACCOUNTANTS

All Taxation & Accountancy Needs

We're here to help. Forward thinking professionals with old fashioned values on service and quality.

Tel: 812491 www.pricedavis.co.uk

The Old Baptist Chapel, New Street

Sheepscombe Bridge Club

The new season of the Sheepscombe Bridge Club will be starting again on alternate Thursdays beginning Thursday 10th September in the Village Hall hopefully promptly at 7.15pm. Doors will open at 7.00pm.

We play duplicate bridge and everyone, except for absolute beginners, should have a good evening. Please contact Hugh Tarran on 814081 or Joy Edwards on 812588 for more information.

Joy Edwards



CENTRELINE
ARCHITECTURAL SCULPTURE

www.centrelinestone.co.uk

STONEMASONS
STONECARVERS
SCULPTORS
CONSERVATION
CRAFTSMEN

+

ADVISORS

Fairfax House, Vicarage Street, Painswick
Office: 01452 813892 Workshop: 01285 821074

DAVID ARCHARD
in association with
Philip Ford & Son
Funeral Directors

Part of Dignity plc. A British Company

Private Chapels of Rest
24 hour Personal Service

Dirleton House
Cainscross Road
Stroud

01452 812103 or
01453 763592

**ELECTRICAL
AND
ALARM
SERVICES**

New Installations, Rewires, Extra Sockets
Lights, Showers, Security Lighting
Economy 7 Heating etc

Professional intruder alarm
systems fitted from £300
Door Entry and Closed
Circuit Television Systems fitted



For a friendly, prompt
and reliable service,
contact

Steve Gallagher
07836 273768 or 01453 791209
ALL WORK FULLY GUARANTEED

Millie Stone

Caroline Stone (nee Dicks) writes to tell us about her 13 years old daughter Millie who was a pupil at The Croft School until 2007. Millie, pictured here, played cricket for Painswick under 13 boys from the age of 9. She left the Croft to go to Pate's Grammar School in Cheltenham. Since then her cricket career has taken off. Although she continues to play for Painswick, she now plays for Gloucestershire under 13 girls.

On Sunday 26th July Gloucestershire played Dorset. It was a 30 Overs match. Gloucestershire batted first and Millie was third in. She scored a massive 111 runs in the remaining 25 overs. Apparently she is the first junior County player to score over a century in Gloucestershire. She then went on to bowl and took two wickets, one bowled and one LBW. Gloucestershire won the match with a total of 180 runs to Dorset's 118. It was a wonderful day for the girls and I felt it was an event worth celebrating in the local magazine.

Millie is well known in the village and I know her old Croft friends (and teachers) will be delighted to know she is pursuing her cricket career for the County. (Her Grandparents are Kath and Ivor Dicks of Vicarage Street). We are all very proud of her.

Well done Millie.

Anyone for the Stroud Half Marathon?

The PURRS (Painswick Unrunners) will once again be entering the Stroud Half Marathon on Sunday, 25th October with the Williams Syndrome Foundation team. We will be 'unrunning' it, i.e. sociable running with the aim of running, if we can, and talking, if we can, (of course we can, and usually both at the same time...but it's quieter up the hills!).

If you would like to join us contact Rosie Sanderson for a 6 week training schedule, starting in September. You'll be very welcome! Rosemary. Sanderson@gmail.com or 813210

Rosie Sanderson

Golfing for all . . and free

Free taster golf is available to all who wish to consider trying or returning to golf; no experience is needed.

Professional golfer Marc Cottrell will provide expert guidance and encouragement. Anyone who is interested should turn up to Painswick Golf Clubhouse between 3.00pm and 5.00pm or for 6.00pm to 7.00pm on Thursday 17th September. Any queries regarding this offer or to arrange your visit please ring Marc on 812180 or telephone 813141 or the Lady Captain on 812262.

Equipment and balls will be provided but please bring trainers or golf shoes. If you have any golf clubs you are welcome to bring those along.

The Ladies' Section is also arranging coaching sessions, to help golfers who are experiencing difficulties with some holes on the golf course. The first session with the professional was on Thursday 27th August at 3.00pm. Marc will enable golfers to play the best shots to "get over" the 5th and 10th.

Sylvia Walker

Table tennis

As announced in the February Beacon, the Painswick Centre is starting a Table Tennis Club.

The first evening will be Friday 18th September from 7.00pm – 9.00pm in the Main Hall of the Painswick Centre. An introductory charge of £3.50 will be made for each evening played. Once the Club is fully established, the members will be responsible for determining membership arrangements and charges for the longer term.

In the first instance, would everyone interested in playing table tennis, please ring me on 812464.

We already have the loan of a table with the possibility of purchasing another. However, we would also be grateful for donations of balls, bats or nets in good condition. Please do look in the back of your cupboards! I will be happy to collect them!

David Linsell Trustee Painswick Centre



PAINSWICK ELECTRICAL SERVICES

- ✓ 40 years' experience
- ✓ 24-hour Emergency Service
- ✓ All electrical work undertaken
- ✓ Inspection & Testing
- ✓ Free Estimates
- ✓ PART P REGISTERED

NICEIC
DOMESTIC INSTALLER

Mike Turner: 01452 812659
01453 758342 / 07850 784899

painswick osteopaths.

Paul Stamp D.O.
Helen Froggatt D.O.

Tel: 01452 301748
Painswick Surgery, Gyde Rd. Painswick

- Structural
- Cranial Osteopathy
- Sports Injury
- Migraine/Whiplash
- Parking Available

Painswick's Local

The Royal Oak Inn
the place to meet

* 7pm Wednesday 30
September - fun quiz and
chips with the MP - pit your
wits with DAVID DREW MP
* launching the Royal Oak
outside catering - let us take
the strain out of family
parties - we're good at it
* music on Saturday nights

ring 01452 813129
www.theroyaloakpainswick.co.uk

Churches Together

On a glorious summer afternoon at Broadham Fields a team representing Churches Together Around Painswick played the annual match against Churches Together Around Stroud for the Ron Taylor Trophy. The match could not be held in the 2007 and 2008 seasons because of adverse weather conditions. Painswick won the 2006 game but had to surrender the trophy this year when Stroud achieved victory in a match which was enjoyed by the spectators as much as the players. The teams wish to express their considerable thanks to the Painswick Cricket Club for making the club's facilities available to them and to the Stroud ladies for providing an excellent tea. Pictured below is the Painswick captain, Nikhil Sen, handing the trophy to the Stroud captain, Graham Bailey (hatted).



Cricket

Painswickian Paul Morris (pictured) has had a very good season for the Painswick Second Eleven. As an all rounder he has proved his value to the club turning in excellent performances with both bat and ball.



Cricket Club

Painswick has had a very successful season with the third eleven winning Division 2 of the MGM Stroud Cricket League. The first eleven have finished third in mid-table in the Gloucester Division of the Glebe Sports West of England League with the second eleven ending the season in runners-up position after winning their game against Stone last Saturday (Aug 29th). Painswick 1st XI are to be congratulated on winning the Stroud Area 20 Overs Knock Out Cup beating the Stroud club in the final and Frocester in an earlier round.

Results (All matches are league games)

Sat Jul 25th. Bredon 1st XI 234-6 Painswick 107 (J Cook 50*). Bredon 2nd XI 207-6 Painswick 2nd XI 208-6

(A Wager 70 M Taylor 41).

Sat Aug 1st. 1st and 2nd XI matches against Hatherley and Reddings cancelled.

Sat Aug 8th. Fairford 1st XI 131 Painswick 1st XI 134 for none (J Cook 48* E Bressington 57*).

Sat Aug 15th. Painswick 1st XI 61 Woodmancote 1st XI 62-3.

Woodmancote 2nd XI 156 Painswick 2nd XI 162-2 (P Morris 36 D Cave 96*).

Uley 2nd XI 34 Painswick 3rd XI 35-2.

Sat Aug 22nd. Painswick 1st XI 179-8 (E Bressington 67) Redmarley 1st XI 101 (S Base 4-20).

Redmarley 2nd XI 91 Painswick 2nd XI 92-2 (P Morris 36*).

Sat Aug 29th Painswick 1st XI 299-4 Stone 1st XI 140.

Stone 2nd XI 104 (P Morris 3-5) Stone 2nd XI 197 (P Morris 46 D Barnard 51).

Stroud 4th XI 150 Painswick 3rd XI 154-4 (Jacob Lee 68*).

Recreation Ground

The Recreation Ground Trustees have agreed to Painswick Cricket Club's request to play cricket on the ground starting next season. This is because the club is expecting to run four teams from 2010 and it is only possible to play one match each Saturday at Broadham. The Recreation Ground was the club's home for many years before the move to Broadham.

The Trustees have also agreed to Painswick Football Club playing their matches at the Recreation Ground.



Caroline Crawford
INTERIOR DESIGN

- Interior Design
- Made to Measure Curtains
- Soft Furnishings & Fabrics
- Upholstery & Wallpapers
- Paint Techniques & Flooring
- Lighting & Accessories

Opening times: By Appointment
Tel/Fax: **01452 813631**
www.carolinecrawfordinteriors.co.uk
email: cci@carolinecrawfordinteriors.co.uk

**Physiotherapy &
Sports Injury
Clinic**

AT

**Painswick
01452 810211
&
Stroud
01453 755948**

www.physiofive.co.uk



Doctors or Self Referrals Welcome

IRONEASY

**Professional
Ironing
Dry Cleaning &
Laundry Service**

FREE
Collection
& Delivery



Tel: 01452 740129
www.ironeasy.freeuk.com

Agent for Johnsons Dry Cleaner



As the first festival of
 at least a fraction of the
 in this village of our
 The constant str
 many, in as small a
 village as a whole b
 these visual and h
 have been the ben
 throughout the sum





**Cedar
 Motor
 House**
**MOT
 Testing
 Station**

Grove Court,
 Upton Hill
 Upton St. Leonards
 Gloucester
 Tel: 01452 617240
 Mob: 07976 322735

Situated just off
 Upton Hill. Grove
 Court is 100 yds
 past the kings Head
 Pub on the right.

THE PAINSWICK PHARMACY
 NEW STREET PAINSWICK (01452) 812263

OPENING TIMES
 MONDAY to FRIDAY
 9.00 - 1.00 and 2.00 - 6.00
 SATURDAY
 9.00 - Noon



Summer Art Festival



of its kind draws to a close the Beacon tries to capture at the vision of those who saw that the diverse artistic skills of residents deserved better presentation to the outside world. We are striving to improve and communicate through art by so much as a community as ours, not only reflects well upon the individuals who show such dedication to creating such a hugely pleasing art forms. Visitors and residents alike are the beneficiaries of this strong lead, and outstanding results are the result of summer.



Peter Barnfield
Painter and Decorator

20 Years experience
 Internal & External work undertaken
 Texturing Speciality in paper hanging

Free estimates given
01452.411182 or 07881 408380

Tim Mifflin
CARPENTER
PAINTER AND DECORATOR
BUILDING REPAIRS
 tim@mifflin.fsnet.co.uk
 Enquiries welcome
 Telephone: Painswick 813866

Family Tree Funerals



For a much, much more personal funeral

01453 767 769
 www.familytreefunerals.co.uk
 The Old Painswick Inn, Stroud

Out of the Mist

A Cotswold tribute to The Royal National Lifeboat Institution

The dramatic story of the RNLI over 180 years is to be brought to life in the Cotswold village of Cranham in an entertaining and educating production.

Meet the unsung heroes and heroines, and their families, who voluntarily put their lives at risk to save others at sea. Humour, sadness, triumph and disaster will feature in this home grown production.

It will be staged in Cranham Village Hall on;

Thursday 29th October - evening 7.30pm

Friday 30th October - evening; Sold Out

Saturday 31st October - matinee at 2.00pm

Saturday 31st October - evening; Sold Out

The evenings will begin with an optional, traditional, Fish/Chicken and Chips supper cooked on the premises at 6.15pm by Three Counties Catering and served in paper with bread & butter. There will also be a bar. Tickets £12.50 to include Supper; £8.00 without Supper.

Tickets, with all proceeds to the RNLI, from
Norma Kay 07720.046802 norma.kay@btinternet.com
or Hazel Roberts 812661 hazelnroberts@hotmail.co.uk



Alan Tyson

Fashion Show

The Painswick Support and Fundraising Group for Cotswold Care Hospice will be holding a Fashion Show on 17th November at Painswick Golf Club.

The Fashion Show is presented by Cousins of Montpellier, Cheltenham and will cost £10 including a free glass of wine. The show will start promptly at 7.30pm. Cotswold Care Christmas cards will be on sale and a raffle will be held on the night.

Tickets are available now from Paula Woodcock on 812845 or Sylvia Walker 813141. All proceeds are given to the hospice,

SWINE FLU

For advice and diagnosis,

0800 1 513 100

www.direct.gov.uk/pandemicflu

September News from your



Recently I spent some time with three very lovely ladies discussing amongst other things, what was available in the area to help combat those long hours many of you spend on your own.

So, I shall start today with a plea to everyone reading this. If you know of a local event going on in your hall or social club which might interest a person living alone near you, PLEASE call on them and offer to give them a lift. It can be very difficult to take an offer of help and to have the courage to be amongst

people when you have been alone for some time, so please be encouraging and gently persistent. I have been involved in doing some questionnaires recently looking at older people living in rural areas and their involvement in their communities. In general (and its hardly new news!) all is fine until ill health affecting the ability to drive, sometimes coupled with the death of a partner, leads to the person becoming isolated and unable to take part in local activities. We live in a hilly terrain and what might have once been a refreshing stroll, can become Mount Everest if you have bad hips, arthritis, etc.

I imagine that most of you know by now that Ashwell House in Painswick invites older people to join them for lunch cooked by the WRVS, on a Tuesday and Thursday. The cost is £2.50 for a main course and desert, and the company is free. Call Helen Baker on 813091, to book a meal. If you would like a fuller day, you can go along to the day centre there on a Wednesday for £5.00. I went there a few months ago and I can genuinely say that I had a really great time and met a great bunch of women. So why no men? Go on, it just takes one or two of you to be brave and then more will follow. Give either Ann Kember on 813259 or Etelle James on 813356 a call and they will happily visit you to discuss what's on offer. Resthaven Care and Nursing Home in Pitchcombe are also very happy to welcome non residents for a whole day or for as little or long as you wish to stay. While you are there, you can use the facilities (hairdresser, bathing, washing machine) and take part in the activities offered for that day. I mentioned last month that there is also the opportunity to take advantage of the newly refurbished wing, to arrange Respite care. Call Jayne on 812682.

Don't forget the excellent lunches available through the Community Lunches held at Christ Church Hall (Gill Gyde on 812587) and Cranham Lunch (Nikki on 812429). If you would like to know about other day care available, or how to arrange transport, call me and I'll arrange to meet you for a chat.


Lou Kemp 07776.245767

Horne & Kilmister Ltd

General builders & stonemasons

'The complete building service'

- Extensions, renovations & newbuild
- Garages
- Roofing
- Hard landscaping



Tel: 01452 812760 or 01452 814416
Fax: 01452 814416




RESTHAVEN

Resthaven, Pitchcombe, nr Stroud
Gloucestershire GL6 6LS
Telephone: Painswick (01452) 812682

RESIDENTIAL/NURSING HOME
LONG TERM & DAY CARE
SINGLE ROOMS
PRIVATE CHAPEL
BEAUTIFUL SETTING OVER-LOOKING

THE PAINSWICK VALLEY
Resthaven Home of Healing Ltd
Regd. Charity No. 235354



GODDARD'S GARAGE
Cheltenham Road Painswick

- Full servicing & repair facilities
- MOT preparation & repairs
- Private hire -
local or long distance
- Petrol/ Diesel/ Tyres/ Exhausts
- Paraffin/ Coal/ Calor Gas
- Car valeting

Personal attention for your car

01452 812240

Italian - again

By popular demand Christ Church are once again holding an Italian Evening at their Church Hall on Friday 2nd October at 7.00pm.

Tickets are £15 with all proceeds going to their 3 Charities of the year - Mencap, Jerusalem Eye Hospital and the Family Haven. Do come along with friends to support us and enjoy an evening of Italian music, food and wine.

For further information or tickets please contact me on 814357.



Meriel Middleton

Croft Leavers



Year 6 children awarded with prizes at the end of term Leavers' service on 16th July at St Mary's Church.

Left to right, back row - Will Jollans (Lucy Hyett Cup for drama), Joshua Mercer (PADFAS Cup for art), Holly Perris (Painswick Music Society Cup for music), Catherine Taylor (The Broadham Cup for sport), Ellie Gobey and Max Simpson (the 'Cow Shield' for service to others)
Front row - Francesca Mowatt and Lara Fair (Bernard Jones' trophy - for overall contribution to the school)

Community Lunches 2009/10

As summer comes to a close, we look forward to the Autumn session of the Community Lunches. The first lunch will be held on Monday 5th October at 12noon in Christ Church Hall, and this year along with our ongoing commitment to Christian Aid we will be supporting The Door Youth project in Stroud. This project is open to all young people aged 11 -25yrs and when asked what difference do they make, Brendan, Project Co-ordinator, always says "There are young people alive today that might otherwise have been dead if it wasn't for the work we do."

For anyone who is unaware of the Lunches, they were started about forty years ago to raise awareness and money for those in need. A simple meal of homemade soup, cheese, bread and butter is served in return for a small donation with each lunch being hosted by a different group.

The original aims remain, along with the benefits to our own community; the opportunity to meet with friends, to make new ones and the importance of helping one another.

Gill Gyde

Indian Dancing Bears



Invitations to a Garden Party to be held in Cranham were extended in the July issue of the Beacon. Adrienne and Barry Norman, at whose home this took place on 12th of that month have written expressing their thanks to everyone who supported them by attending or sending donations.

"It was an amazing day, the sun came out at 1.45pm exactly and gave us a blue sky for the whole of the afternoon which we are sure helped make the event so successful. We tried to 'put our fingers on' what it was which made the afternoon so magical and the answer lay with all of you who came to help or just came to support a wonderful cause and who created such a happy, friendly atmosphere.

The result of these efforts was that we raised £1057 (and 10p) towards saving the last of the Indian Dancing Bears and to provide a safe refuge for them and for this a big 'Thank you' to all of you who gave your support."

JOHN DANDY MOTORS

- ➔ MOTs, Servicing and Repairs
- ➔ Free collection & delivery service
- ➔ Proprietor Painswick resident
- ➔ Free courtesy car
(subject to availability)
- ➔ Quality & value where it counts
Established 1969

Goodridge Avenue, Gloucester GL2 5EA
☎ (01452) 527340







PAINSWICK CENTRE

Bisley Street, Painswick GL6 6QQ
Bookings Tel. 01452 812369

TABLE TENNIS

Starts Friday 18th Sept.
At 7pm. Enquiries - 812464

The Painswick Centre - The Perfect Venue
Licensed Bar, Catering Facilities, Parking
+ Skittle Alley with Bar

Registered Charity No. 101595

M

Montgomery Lettings & Management

01453 756100

Clearly still confusing

Following what I thought was a thoroughly lucid explanation in last month's Beacon, there still seems to be some confusion surrounding Painswick Players' next production of Confusions by Alan Ayckbourn. The confusion seems to lie not so much that our customary December production at the Painswick Centre, will be staged in November (Thursday 26th, Friday 27th and Saturday 28th, since you ask) but because it's all the fault of the Salvation Army. "Why," I have been asked, "the Salvation Army?" Well, I don't know: I just write this stuff. I don't have to understand it!

Of course, as I write this, we're not actually yet in production. Mind you, by the time you read this the first confusing



rehearsal will be upon us. First rehearsals are always confusing: the Confusions first rehearsal, probably doubly so. Already, I've

seen our director, George Krasker, wearing a T-shirt with the initials B.A.I.K! across his chest. When I asked what B.A.I.K! meant, he said it stood for

"Boy, Am I Konfused!"

"But, George," I protested, "You can't spell 'confused' with a K!"

He looked thoughtful for a moment: "You see how konfused I am?"

Jack Burgess

Local History Teaser

Such a distinguished and proud looking group and one not to be seen in our midst any more. But who are they and what was the group? Are you able to name any of them and have you any idea of the date? Can you tell us anything about the history of this set of musicians? They were Painswickians. Do get in touch if you know anything about them.

Last month's photograph was kindly lent by Mrs Ann Daniels. She believes it was taken at The White Horse, known locally as the Pony, and was probably taken on the occasion of a raffle night for the darts team. Ann is able to name some but not all of the people featured. Far left on the back row is Jack Irwin, next but one is Jack Smith (Ann's father), next but one to him is possibly Harold Tranter and at the right hand end is Mr Bayliss, the proprietor. On the front row far right is Betty Perrins, to her left is Mrs Cooke, next left is Miss Foxwell, then Mrs Bayliss the proprietor. The two ladies on the left are not known. If you can name any of the unnamed people we should like to hear from you. Ann thinks the photograph was taken in the late 1940s or early 50s.

If you have a picture which you think would pose a challenge to readers, please get in touch.

The first meeting of the Local History Society's new season will take place on Tuesday, 15th September when Mr Barry Simon will give a presentation on the subject of the history of local church architecture. With more than one fine example within our midst the evening should hold much interest for many people. The presentation starts at 7.30pm in the Croft School and everyone is welcome.

Carol Maxwell

General Building Work
Natural Stone Work
Extensions, Garages etc

A Member of the
Guild of Master
Craftsmen

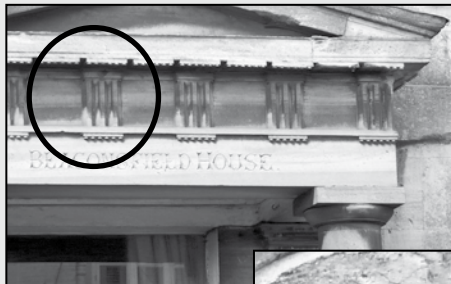
Richard Twinning & Partner
General Builders
(with over 18 years experience)

Hard landscapes
Dry Stone walling,
Patios, Pointing

Tel: 01452 812086
Mobile: 07899 791659
Fax: 01452 812085

ArchiTecs

Did you spot the fine stonework last month? You would be correct if you had identified the porch of Beaconsfield House.



on the same building - giving rise to one wondering just what use it had in those intervening years.



For this month where will you find this date inscription? It is one which is 25 years apart from another

Beacon subscribers

<i>as at 21st August</i>	2009 - 2010	<i>This date last year</i>
New or renewed after lapsing	69	54
Renewed from last year	491	513
Total including postal	560	567



Get ready for summer and save £27

The **Wellness Spa** at Richmond Painswick is offering you the **complete makeover package** for only £80 throughout June.

Package includes: A Manicure, Pedicure, Full leg, bikini and underarm wax and an eyelash tint (patch tint will be needed before tint is carried out).



Please call the spa directly on 01452 810211 or visit www.richmond-villages.com

Allotments

While quite a lot has been written or said about allotments over the past few weeks, the fact remains that the Parish Council has received 27 applications for allotments. Put another way round, there are that number of frustrated people only too keen to get their spades and forks, and much more, into the ground somewhere in or close to the village.

Of these, 25 are from residents living in Painswick itself, with one applicant at Paradise and another living in Sheepscombe.

Parish Councils are required, by law, to seek to provide land for allotments when applications are submitted by 6 or more residents.

The Beacon has been advised that the Parish Council will shortly restart the process of seeking to provide allotments for those residents who have applied, and also give consideration to new applicants. Indeed, they intend to agree the process for seeking new allotments at their meeting this month - September.

The Council will welcome expressions of interest from local residents with land which they are prepared to release for allotments. While sufficient land to meet the whole of current demand in one location will be an advantage, and one in which those tending their plots can share seed and skills, the chances of achieving such within a matter of weeks must be unlikely.

Meanwhile there could be those whose private gardens are now difficult for them to maintain, whether because age has taken its toll or other circumstances prevent regular cultivation. If at least a few of these aspiring allotment holders could immediately tackle a plot in your garden there could be mutual gain. Soil could be turned in anticipation of frosts breaking the sods, broad beans such as *aquadulce* could be planted soon, over-wintering brassicas might be put in place - and the home owner receive some sprouts at the year's end and maybe a modest cash return too.

Do give it a thought, and if interested, at least to talk it over, contact the Clerk Roy Balgobin.

The Beacon undertakes to photograph the first such plot - so what more could you want?

Massively reduced compost bins available!

Residents in Gloucestershire are being urged to bag a bargain 330 litre compost bin for just £5 (plus £5 for postage and packaging).

Over the past 5 years Gloucestershire County Council in partnership with the Recycle Now Home Composting Campaign has sold nearly 35,000 compost bins in the County. In recognition of this milestone, the biggest selling compost bin - the 330 litre - is now being offered at a super discounted price. However the £5.00 offer applies to 3000 of these compost bins, and once these are sold out, the price will revert back to £15 (plus £5 postage and packaging)

Other bins available currently are 220 litre - £12.00 + £5.00 delivery and 320 litre - £35.00 + £5.00 delivery.

Residents taking, who haven't yet taken advantage of these fantastic offers, must do so by 30th September, after which the scheme ends. Everyone who buys a compost bin can opt for a free kitchen caddy, for conveniently storing all of their waste, before it's transferred to the compost bin. To order a bin online, visit www.recyclenow.com/compost or call 08450.760223 quoting reference GULL 9.

Tried it myself - and confirm I ordered

BEACO-DOKU

Derived from Sudoku, Beaco-doku replaces the numbers with letters.

Last month's answer (somewhat optimistically!) used the letters from SUNHAT - as you can see, bottom right.

This being September, we may be on firmer ground predicting the start of that season of 'gentle mists and mellow fruitfulness'.

So, if you're feeling fruity - so to speak - see if you can fill the blank squares in the grid on the right so that each column, each row and each block of six squares contains each of the six letters, F-R-U-I-T-Y, without repetition.

T	A	S	N	H	U
U	H	N	S	A	T
A	S	U	T	N	H
N	T	H	A	U	S
H	N	T	U	S	A
S	U	A	H	T	N



			R		
			F		
			T		
		Y			
I					
		U			

**THREE
Tables**
DENTAL & HOLISTIC CENTRE

Preventative & Cosmetic Dentistry
Facial Rejuvenation
Complimentary Therapist

Late evening, early morning & Saturday appointments available.
Parking on site

Cheltenham Road,
Painswick, Glos. GL6 6XN
Tel (01452) 814427

Garden Party Tents From
spaceintense

FOR HIRE - Telephone 01452 813658
e-mail: charles@spaceintense.co.uk
Grays · Far End · Sheepscombe

HYPNOTHERAPY & HYPNOANALYSIS

Is the business of transforming Negative Behaviours and Beliefs about yourself into Positive transforming strengths

Ruth Coxall DHP DLPT
Tel 01452 812101
Mob 07785 572775
ruth@coxalls.plus.com

WI Coffee Morning

Sheepscombe WI are, in aid of the Cobalt Appeal Fund, holding a coffee morning on Thursday 24th September between 10.30 and noon in the Village Hall.

Patrons are assured of coffee, tea, and cake for the princely sum of £1.50, can have a 'go' at the raffle and listen to a short talk about the Cobalt Appeal Fund.

Everyone will be welcome and all proceeds will go to the Fund.

Lyn Boon

DASH is spreading...

DASH - Delivering Aid to Stroud Homeless is growing. Set up originally just in the Painswick area, satellite groups have now sprung up in Pitchcombe, Randwick and Sheepscombe and, it is hoped, will soon be joined by groups in Stroud itself. The aim of DASH is to support the work of the Merah Trust which seeks to help the growing number of men and women marginalised from society in the Stroud area. Merah runs three "drop-in" sessions each week, providing a hot meal and practical help for about 170 people who are homeless, suffering from physical or mental health problems, have special needs or are coping with addictions.

The DASH groups aim to provide very simple practical help, collecting items needed on a day to day basis. We update our requests monthly but during September we are still asking for your small change (1ps, 2ps & 5ps) so that Merah can build up a "float" for emergencies. When you have a jar or envelope full, please ring either Alison Robinson on 812286 or Frances Watson on 812071 and we will come and collect from you (showing you our letter of authorisation from Merah if you wish).

In addition tins of food, suitable for an easily prepared hot meal are always needed and can be left in collecting boxes at Murrays or the Royal Oak during the week or at the churches on Sundays.

Alison Robinson

Painswick Educational Trust

The Trust will be meeting again shortly to deal with applications from young people resident in the Painswick area for financial help with their studies and apprenticeships.

If you are interested in finding out more, please telephone Joy Edwards on 812588 or Michael James 812646 for an application form.

Reference DIARY

The Beacon appreciates those who so helpfully provide advance information so that we can accurately list upcoming events, especially as an aid for those planning their own activities for the next few weeks.

Historic DIARY

We are also very mindful that there are those who like to look back upon years past and identify what Painswick folk did in previous times.

Thoughtful planner's DIARY

The reason why we do our utmost to encourage organisers to let us have dates to publish as far in advance as possible is so that clashes can be avoided.

Unused DIARY

Regrettably, we hear of organisers who totally ignore the advance information, hold similar events on the same date, and upset those who had been the first to put in so much effort and planning themselves.

Village DIARY

Please continue to help us help you in these matters.

PROPERTY REPORT for August from Murrays

With the summer almost over and properties beginning to sell faster each month it would seem that at last there appears to be a light at the end of the tunnel. The overall confidence in the market has definitely improved and with that we at Murrays have seen a big percentage increase in our sales. August is historically a quiet month in the property market due to many people being away on holiday but we have continued to take on new property and the amount of people registering as new potential buyers has increased by 75%! Nationwide have announced that the property market is starting to look brighter almost everywhere and with that the amount of mortgages being allowed is also on the increase. The properties that Murrays have sold recently are throughout the price ranges and with the lower end of the market starting to sell well then the higher priced properties will be sure to follow.

Murrays continue to take on exciting new properties in and around the Painswick area including; Gerrans, a large 4/5 bedroom house with beautiful views in Orchard Mead, "Ampney" an immaculate 2 bedroom property within Gyde House, 11 St Mary's Mead, a well presented 3 bedroom town house on Stroud Road and Tudor Cottage, a beautifully presented period house with a large garden and barns with holiday let potential in Upton St Leonards.

Properties that are currently under offer are Greenhouse Barn on Greenhouse Lane, Brookhouse Mill also on Greenhouse Lane, 2 Churchill Way, 15 Hyett Orchard and Sunny Bank in Waddon and properties that have now sold are Hambutts Barn on Edge Road, 3 Juniper Cottages on Wick Street and Ashcroft in Cranham.

James Murray



**THREE COTSWOLD OFFICES
& MAYFAIR LONDON**
PrimeLocation.com

New Street PAINSWICK
01452 814655
www.murraysstateagents.co.uk

HAMPTONS
INTERNATIONAL

A global network of over 85 offices - including 21 in London.

For all your property requirements call **Hamptons Painswick** on 01452 812354 or visit **www.hamptons.co.uk**

SEPTEMBER

Sat	5	Conservatives Summer Garden Party: Tickets £12 - Tel. 814293 / 813848	Damsells Cross	6.00 to 8.00pm
Mon	7	Yoga (Mondays) contact Kim 812623	Sheepscombe Vill. Hall	6.30 to 8.00pm & 8.15 to 9.45pm
		Painswick Singers autumn term starts	Church Rooms	7.30pm
Tue	8	Dog Training Club (Tuesdays)	Christ Church Hall	9.30 to 12.00noon
		Homelessness explored (see p 3)	Painswick Centre	6.45pm
Wed	9	Yoga (Wednesdays) contact Kim 812623	Sheepscombe Vill. Hall	9.30 to 11.00am
		Probus: Schubert - the young genius: Anne Dunn	Shires Room, Falcon	10.00am
		Bingo: Wednesdays - Tel. Ann, 813911/Liz, 813139	Painswick Centre	7.30 to 10.00pm
Thu	10	Yoga - All Abilities (Thursdays) Cotswold Room 812623	Painswick Centre	9.30 to 11.00am
		T'ai Chi: Thursdays - Contact 813072	Town Hall	9.30am
		Jolly Stompers Line Dancing: Beginners - Thursdays	Town Hall	12.00 to 1.00pm
		Experienced beginners - Thursdays	Town Hall	12.30 to 1.30pm
Fri	11	Country Market - Coffee available - Every Friday	Town Hall	10.00am
		Friday Club: Orchard Flower Craft with Yvonne Mort	Town Hall	2.30pm
Sat	12	Horticultural Society Annual Show	Painswick Centre	2.30 to 5.30pm
		Concert by The Capella Singers in aid of Pitchcombe and Harescombe Church Funds	Pitchcombe Church	7.30pm
Tue	15	Local History Society: The History of Local Church Architecture - Croft School Barry Simon		7.30pm
Thu	17	Theatre Club Outing to Stratford	Stamages Car Park	10.00am
		Music Appreciation Group - Introduction	Cotswold Room	7.30pm
Fri	18	Table Tennis Club inaugural meeting (enq. 812464)	Painswick Centre	7.00 to 9.00pm
Sat	19	Copy dateline for October Beacon		
Sun	20	Painswick Clypping Service: Speaker David Drew MP	St Mary's Churchyard	3.00pm
Tue	22	Yew Trees W.I.: Village Agent & Neighbourhood Wardens	Town Hall	7.30pm
Wed	23	Probus: Pioneer Emigrants to South Australia - Neil Curven	Shires Room, Falcon	10.00am
Fri	25	Friday Club: Bletchley Park - Kitty Floyd-Smithies	Town Hall	2.30pm
Sun	27	Harvest Lunch	Painswick Centre	

OCTOBER

Thu	1	Cotswold Care Fundraising Group	Ashwell House	2.30pm
		Music Appreciation Group: Glazunov - Maurice Maggs	Cotswold Room	7.30pm
Sat	3	October Issue of The Painswick Beacon published		
		Painswick Music Society AGM (see p 6)	Church Rooms	7.00pm
Mon	5	Community Lunches - start of season	Christ Church hall	12 noon
Wed	7	Probus: The Archers at Poitiers 1356 - Ian Shapter	Shires Room, Falcon	10.00am
Fri	9	Friday Club: "Mazes & Labyrinths" - Angela Newing	Town Hall	2.30pm
Sat	10	Friday Club Coffee Morning	Town Hall	10.00am
Tue	13	Bird Club: The Wildlife & Beauty of Working Quarries - David Boag	Town Hall	7.30pm
		Voskresenje (Resurrection) Russian Choir	St Mary's Church	7.30pm
Wed	14	Horticultural Society: Autumn colour & Interest in the garden	Town Hall	7.30pm
Thu	15	Music Appreciation Group: George Lloyd - presented by Ian Hiscock	Cotswold Room	7.30pm
Tue	20	Local History Society: Sheepscombe Victorians - Ron Patterson	Croft School	7.30pm
Wed	21	Probus: The History of Cheltenham - Susan Newton	Shires Room, Falcon	10.00am
Fri	23	Friday Club Outing to The Cotswold Perfumery, Bourton on the Water		
Sat	24	Conservatives Bridge Drive	Town Hall	2.00 to 6.00pm
Tue	27	Yew Trees W.I.: Nature in Art - Simon Trapnell	Town Hall	7.30pm
Fri	30	The 'Three Other Tenors' from the Welsh National Opera	St Mary's Church	7.30pm
Sat	31	Coffee and Crafts (please note amended date)	Christ Church Hall	10.00am to 1.00pm
		Theatre Club Outing to Cheltenham	Stamages Car Park	1.30pm
		Painswick Singers Concert - HMS Pinafore	Painswick Centre	7.30pm
		Directory alterations for 2010 closing date (see p 2)		

NOVEMBER

Mon	2	Music Appreciation Group Concert Outing to Birmingham Symphony Hall	Birmingham	7.30pm
Wed	4	Probus: Growing up in Norway during the German occupation - Tore Fauske	Shires Room, Falcon	10.00am



Thu	5	Cotswold Care Fundraising Group	Ashwell House	2.30pm
Fri	6	Friday Club: Guests of Richmond Painswick	Richmond Painswick	2.30pm
Sat	7	Sue Ryder Care Christmas Fair	Town Hall	9.45am to 12 noon
Wed	11	Bird Club: A Calendar of British Wildlife - Andy Purcell	Town Hall	7.30pm
Thu	12	Music Appreciation Group: Handel - Alex Nichols	Cotswold Room	7.30pm
Sat	14	Christmas Shopping and Pamper Fair - enquiries to 814022	Painswick Centre	10.00am to 5.00pm
Tue	17	Local History Society: Folk Music and Songs of the Cotswolds - Gwilym Davies	Croft School	7.30pm
		Cotswold Care Fashion Show	Painswick Golf Club	7.00pm
Wed	18	Probus: Evolutionary Pessimisms - HG and Other Wells - Roger Hennessey	Shires Room, Falcon	10.00am
		Ashwell House Day Centre Coffee Morning	Ashwell House	10.30am to 12 noon
Thu	19	Churches Together AGM and Speakers	Church Rooms	7.30pm
Fri	20	Friday Club AGM followed by "Handbell Ringing" with Steve Colman	Town Hall	1.45pm (AGM)
Sat	21	Christian Aid Coffee Morning	Town Hall	10.00am to 12noon
Tue	24	Yew Trees W.I.: Annual Meeting and Talk on Traidcraft	Town Hall	7.30pm
Thu	26	Painswick Players present - Confusions by Alan Ayckbourn. (also 27th & 28th)	Painswick Centre	7.30pm
		Music Appreciation Group: Ivor Gurney - presented by Philip Lancaster	Cotswold Room	7.30pm

DECEMBER

Wed	2	Probus: The Archers at Agincourt - Ian Shapter	Shires Room, Falcon	10.00am
Thu	3	Cotswold Care Fundraising Group Christmas Dinner	tba	7.00pm
Fri	4	Friday Club Outing to Bath Christmas Market Salvation Army Brass Band Seasonal Concert -enq. 813228	Painswick Centre	7.30pm
Sat	5	Conservatives Xmas Party and Quiz	Town Hall	tba
Wed	9	Probus: Christmas Dinner	The Hill, Stroud	
Thu	10	Music Appreciation Group: Christmas Social	Cotswold Room	7.30pm
Tue	15	Yew Trees W.I.: Christmas Gathering	Town Hall	7.30pm
Fri	18	Friday Club Christmas Lunch		

2010

JANUARY

Wed	6	Probus: The Severn Bore - Chris Witts	Shires Room, Falcon	10.00am
Thu	7	Music Appreciation Group: Haydn - Howard Allen	Cotswold Room	7.30pm
Tue	19	Local History Society: Early English Allotments - John Looseley	Croft School	7.30pm
Wed	20	Probus: County Air Rescue Trust Bird Club field trip to Cotswold Water Park	Shires Room, Falcon Gateway Centre	10.00am 10.30am
Thu	21	Music Appreciation Group: Surprise - Iain Cooper	Cotswold Room	7.30pm

FEBRUARY

Thu	4	Music Appreciation Group: Chamber Music - Norma Kay	Cotswold Room	7.30pm
Thu	11	Bird Club: The Wildlife of Shetland - David Scott-Langley	Town Hall	7.30pm
Tue	16	Local History Society: Old Paths of Gloucestershire - Alan	Croft School	7.30pm
Thu	18	Music Appreciation Group: A Good Blow - Robert Nichols	Cotswold Room	7.30pm

MARCH

Tue	2	Music Appreciation Group: Concert Outing to Birmingham Symphony Hall	Birmingham	7.30pm
Thu	11	Bird Club: Islands of the Indian Ocean - David Cramp	Town Hall	7.30pm

A Noise in the Night

At about 11.50pm on a recent Friday night I was awoken by the sound of people chatting. When the sound continued I looked out and saw two shadows with the glow of cigarettes at the front of my garden.

Imagine then my horror when my small pear tree shook and I saw a hand removing a pear then another. I turned the lights on and opened the window further, ready to admonish these fruit stealers! But alas they were gone. Now the theft of a couple of pears may seem very insignificant to most of you, but this was a small young tree and I had been carefully nurturing the seven small pears that it had produced this year so that I could choose the best four to enter in the horticultural annual show in September. Now, alas, those left are too small and this opportunity has been denied to me. Of course in the morning I found the remains of the pears thrown to the ground — they will not be ripe enough to eat for a few more weeks.

Had I thought quickly enough I should have grabbed my camera and taken a photo of the miscreants this could then have been entered in the photographic section under the title of "Unwanted Garden Visitors"

Gilly Padbury



NEW APPLICATIONS

PYLL HOUSE, SHEEPSCOMBE. Erection of detached car port and workshop building.

PYLL BARN, SHEEPSCOMBE. Erection of a single storey outbuilding for the storage of garden tools and machinery.

LITTLE PLACE, HOLLYHOCK LANE. To trim, reduce height and spread of TPO 317a.

SPRINGFIELD LODGE, SLAD. Erection of open oak framed porch with pitched roof, erection of dormer window in place of existing rooflight and modification of chimney stack on south side of property.

STONECHAT COTTAGE, NEW STREET. Roof alterations to store areas to include insertion of skylight, works to improve timber outbuilding and erection of shed and pergola to property within the curtilage of a listed building.

3 WORDINGS MOUNT, SHEEPS-COMBE. Retrospective application for the extension to dwelling and cladding with natural stone (revised application following permission S.08/1208/FUL).

1 WOODBINE COTTAGE, SLAD. Erection of extensions and variation of condition 2 of S.08/0151/FUL.

RICHMOND VILLAGE, STROUD ROAD. Widening 4 no. dormer windows. Lengthening 4 no. rooflights. Adding 2 no. lancet windows. Replacing an external door.

THE NEW HOUSE, FRIDAY STREET. Erection of extension to existing balcony.

CROSSINGS, LONGRIDGE, SHEEPS-COMBE. Proposed two storey rear extension and raised deck.

HYETT ORCHARD, HYETT CLOSE. Remedial works to 2no lime trees (TPO 317).

CONSENT

SEAGRIMS COTTAGE, PINCOT LANE. Variation of condition 5 of permission 01/930.

1 HAMBUTTS COTTAGES, EDGE ROAD. Extension at first floor level.

DAMSELLS MEWS. Enclosure of existing covered area to link to main dwelling with utility room and create boot room; refurbishment of utility room and installation of two skylights.

COCKSHOOT COTTAGE, COCKSHOOT QUARRY, SHEEPSCOMBE. Erection of single storey extension to replace existing conservatory & store.

BACK EDGE HALL, BACK EDGE LANE, EDGE. Replacement of existing entrance gate and stone walls.

EDGE FARM, EDGE. New and replacement windows and alterations to outbuildings. Change of use of barn to leisure facilities ancillary to existing house.

BRAESIDE, SLAD. Erection of a 2 storey and single extension and wood store. Resubmission following approval 09/0423/FUL.

Land at **BEECH FARM, BEECH LANE, SHEEPSCOMBE.** Erection of stable block and storage barn.

BUTCHER'S ARMS, DAMSELLS MILL LANE, SHEEPSCOMBE. Roof repair and part replacement including new flashings.

Land adjacent to **MILLBROOK HOUSE, KINGS MILL LANE.** Proposed new house.

REFUSAL

LULLINGWORTH, STROUD ROAD. Installation of pergola frame with solar panels.

PYLL HOUSE, SHEEPSCOMBE. Erection of garden room and glazed link to dwelling.

MINI-ADS

Computer/typing chair, adjustable height and back; 5 castors, black upholstery, good condition £15.00. Telephone 813128

Escaping the credit crunch with a last minute holiday? Can't take the dog(s)? I board dogs in my own cosy home. All creature comforts, as many satisfied dogs have testified. 812678

MINI-ADS - Free to subscribers.

For non-subscribers there is a flat charge of £5.00. For commercial/business mini-ads priority and space constraints apply.

Text maximum of 30 words + payment by cheque in advance, to 'The Painswick Beacon', to Dermot Cassidy, 1 Painswick Heights, Yokehouse Lane, GL6 7QS

Have you seen Litmus?

Our blue Burmese Litmus has been missing since early August soon after we moved to Blakewell Mead, and we are hoping someone may have spotted him.

He is dark grey and extremely friendly, and may well have wandered beyond



Blakewell Mead and surrounding Edge Road. Any sightings, please call 813898. His brother Casper, also pictured and in the left of the drum kit, will be very grateful, as shall we.

Improve Your Body's Fitness by Christmas

Rosemary MacDonald, who has developed a reputation over six years in her private studio in Cheltenham for a depth of pilates that is highly recommended by the sports and medical world around that town, has extended an invitation to readers of the Beacon to get rid of aches and pains, develop a flatter tum, and become stronger and more supple by Christmas.

She is offering a taster 75-minute pilates class on Monday evening 14th September or Tuesday morning 15th at the Painswick Centre which has its own free parking. These are at 6.00pm until 7.30pm on the Monday, and 9.30am to 11.00am on the Tuesday.

Rosemary will appreciate an advance phone call on 01242.237357 or message on www.purepilatescheltenham.co.uk. Missed classes can be caught up free of charge in her other classes or in her dedicated private studio in Hales Road Cheltenham, pilates is taught 5 days and evenings a week.

"Bring new depth and breadth to your pilates, even experienced people love this form of pilates" says Rosemary; so why not give it a try?

Pressed 2 Perfection
The Premier Ironing Service

- ✓ Reliable and accommodating
- ✓ Free pick up & delivery
- ✓ Only £9.00 an hour and some prices per item

Viki: 07976 400139
Call in the perfect solution!

COLIN NASH
CONTRACTOR

Fencing - Hedgecutting - Topping etc
- Paddock cleaning

with tractor or quadbike

Telephone 01452-813104
Mobile 07788 912546

Holcombe Farm
Painswick
GL6 6RG

Tired PC

Poor Performance
Does it need fixing?
Call IDZ for advice and support.

All hardware and software repair, virus removal, upgrades and new installations. Broad experience, home, office, etc.

Local, friendly service
(01452) 812733

The Personal Column

Rachel Taylor and Jenny Gaugain

Weddings

Best wishes for their future happiness to DALE ROBINSON and KATIE PROCUTOR who are to be married at St Mary's, Painswick on 12th September.

Babies

Congratulations to RICHARD and ANNE HOYLAND on the birth of their daughter, Sophia Dorothea on 5th August in Versailles, a sister for Phillipe and Hugo and a fifteenth grandchild for Jane and Jim Hoyland. (11 grandsons and 4 granddaughters);

also to MAGDA and MAT REEKIE-BLACK on the birth of their son Eduard Charles on 29th July,

also to GARY and ZOJA LUFF on the birth of their daughter Hannah on 18th August, a sister for Sophie,

and to SANDI CARR and ROB ALLEN of Vicarage Street on the birth of their twin daughters, Connie and Faye on 21st July, two sisters for Miles.

Golden Weddings

Belated Golden Wedding Congratulations to BARBARA and HAROLD CLARK who celebrated their 50th wedding anniversary on 25th July,

and congratulations to LESLIE and GILIAN JONES on their Golden Wedding Celebration on 1st August.



Vicki Sharp, daughter of Bill Bray MBE, has kindly drawn attention to a very significant recent family event.

Bill became a resident of Richmond Village last year, and has had a life long attachment to Painswick since boyhood.

Vicki writes from her Warwick address, "At the age of 94, with terminal illness, he was able, with the marvellous help of staff at Richmond, to attend the wedding of his dear grandson, Benjamin Sharp to Toni Ward in Kenilworth. This was a landmark occasion which was made very special by his presence".

The photograph is testament to such an occasion.

Welcome

We would like to welcome JEAN BROWN who has recently moved into Richmond Painswick having come from Kent, but who used to live in Brimscombe;

also Ms DARROCH and Mr CHESMORE who have moved to Ashcroft in Cranham,

and to ROBERT ALLAN who has moved to 3 Juniper Cottages, Wick Street,

and to Mr and Mrs FIELDER from West Yorkshire to the Crossing in Longridge.

Farewell

Goodbye to Mr and Mrs JOHN POOLEY who are leaving Ashcroft to move nearer to relatives.

Get well soon

Our best wishes for a speedy recovery to Mrs AUDREY CAPPER, JOHN BAILEY, JOYCE BIRT, FRED A HUDDLESTONE and BETH MACDONALD.

Condolencies

Our sincere sympathies to the family and friends of CAPTAIN DAVID MANNERING, VIDA WARWICK, BOBBY PEGNA, ROSS WOODWARD, DULCIE BROTHERTON and TONY WILTSHIRE.



Rachael Sanderson from Pitchcombe and Owen Page from Totnes married on 20th June at Pitchcombe Church.

Rachael grew up in Pitchcombe and attended The Croft Primary School.

Also in the picture are the bridesmaids - sister Laura, and Canadians Alex and Ericka. Despite being a bit chilly at times, the sun shone all day.

NEXT ISSUE

Publication date

SATURDAY
3rd OCTOBER

Dateline for all copy

including Mini-Ads - Display advertising - Diary - Club news - etc using E-mail or the Beacon post box

SATURDAY
19th SEPTEMBER

E-mail address

beacon@painswick.net

Photographs

preferably original
at 600dpi in JPEG

Hard copy preferably typed

Beacon post box - New Street

Web site

www.painswickbeacon.org.uk

All copy must include

Author, address
and contact telephone number

Beacon Committee

Co-ordinating Editor this month

Leslie Brotherton 813101

mr@lesliebrotherton.com

Personal Column

Rachel Taylor 813402

rachel212@btinternet.com

Jenny Gaugain 812599

f.gaugain@sky.com

Diary

Edwina Buttrey 812565

em-m.buttrey@virgin.net

Feature writers

Carol Maxwell 813387

Carolmaxwell@talktalk.net

Jack Burgess 812167

jackb@painswick.net

Leslie Brotherton 813101

mr@lesliebrotherton.com

Sport

Terry Parker 812191

terence5545@btinternet.com

Advertising

Dermot Cassidy 813737

dermot@painswick1.freemove.co.uk

Distribution

Celia Lougher 812624

celia@lloydstone.plus.com

Treasurer

Richard Aspinall 812379

rgrasp@tiscali.co.uk

Subscriptions

Shirley Clark 812378

shirclark@talktalk.net

Quiz

Charles Dorman 814548

chasdorm@googlemail.com

Directory

Carol Maxwell 813387

Carolmaxwell@talktalk.net

Printed in Gloucester

for
The Painswick Beacon

by

www.inkylittlefingers.co.uk

01452 751900

