

The Painswick Beacon

Volume 33 Number 1

Sine praeiudicio

April 2010

The library - a letter

At the meeting of the Parish Council on 17th March Isabella Szczurek handed in a petition signed by 506 local people in support of retaining a library service in Painswick. A full report upon well over an hour of debate on the subject of loss of a permanent library and the premises in Stroud Road is set out elsewhere (*page 13*) in this issue.

Chairman Terry Parker read out her accompanying letter addressed to David Paynter, Head of Libraries and Information at Gloucestershire County Council. The text of the letter, which so strongly expresses local opinion, and requires no editing or precis reads:

Dear Mr Paynter

I am writing to you concerning the closure of Painswick library and would like to present you with a petition from the residents of Painswick and surrounding villages. Everyone I came into contact with feels very passionately about the library and misses its services greatly.

For many people, it is not just a matter of borrowing books, but of the many other services it offers. The library staff organised a monthly storytime, with craft activity for children, which was extremely popular. Also, a growing baby/toddler music session met regularly. A summer holiday reading challenge was set annually, encouraging local children to read a variety of material.

On a personal level, my young children love visiting the library and changing their books regularly. It is a great opportunity to learn how to use a library - surely an important aspect of every child's development.

I relied on the photocopier and printer, as did many others. To compile this petition I had to drive to my parents' house to borrow their printer which was fairly inconvenient and not very environmentally friendly! I often used the DVD library which was great value.

Not everyone owns a computer/printer and I frequently saw them used by members of the Paradise community, along with more elderly residents and school children doing their homework, who now have nowhere to do it. The library is a social place for many and possibly the only opportunity for a chat.

Driving to Stroud library is not a viable option as some people don't own cars/drive or may share with their partner. The bus service is poor/expensive and a huge hassle with small children.

I have been given the impression that, rightly or wrongly, Gloucestershire County Council feels local residents are unbothered by the library's closure. I would like to emphasize how passionately people feel about its loss. It is a service the village definitely needs and I'm sure new premises for it could be found if necessary.

Yours in anticipation

Isabella Szczurek



Painswick Playgroup Applications for September

We are now taking applications for children for the September 2010 intake.

Painswick Playgroup is delighted to say that after a highly successful year, and due to continued demand, we will still be offering sessions in the afternoons from 12.30-3.30pm (except Wednesdays) and running lunch clubs from 12.00 - 12.30pm as well as our long-standing morning sessions from 9.00 - 12.00am.

Parents are requested to return their registration forms by the 30th April.

Please contact the playgroup on 813316 for further information or see our website for more details www.painswickplaygroup.co.uk. There you will see 'Painswick Playgroup is located within the grounds of The Croft School, set in a beautiful location, surrounded by over 4 acres of grounds. Painswick Playgroup is run independently and is a registered charity. We take children aged from 2 years 9 months. If your child does not reach this age until after the start of the academic year (i.e. September), it is possible to reserve a place until this age has been reached.

Being a member of playgroup does not automatically reserve your child a place at the school but it can make your child's transition into school much easier as they are familiar with the site and will go to school with many of their playgroup friends.'

Lizzie Dunckley Chair of Painswick Playgroup Committee

On other pages this month - our Post Office services unravelling, local and national poet, up-coming gardens open scheme, white elephant hunt, also pink pigeon and echo parakeet, while domesticated bears take the plunge, male voices aplenty, much to say in letters, the allotment site consultation pictures, full results of the quiz, grow a spud in a bucket, the music season detailed, bowling club changes, and new approach to library and properties, with Easter bonnets caught on camera.

The meeting was attended by 10 members of the public, County Councillor Joan Nash, Stroud District Councillors Frances Roden and Barbara Tait and Stephen Friar, chair of the Painswick Summer Arts Festival.

PLANNING

Core Strategy Consultation

Chairman David Hudson briefly summarised SDC's seven alternative strategies for shaping the future of Stroud District and said that the working party's preference was for options G and then F in that order. (Option G envisages 40 sites of 10 to 50 dwellings distributed amongst the District's parishes whilst Option F is a dispersal strategy with 25 sites having 50 to 100 dwellings.) These options would benefit smaller villages and would encourage local employment. Terry Parker and Ela Pathak-Sen remarked that no account appears to have been taken of the many people who work from home and the requirement of faster broadband speeds, better public transport as well as other facilities. The meeting agreed with David Hudson's choice of options.

Planning meetings

David Hudson queried the need for planning meetings on the first Wednesday of each month as few members attend and there are often few planning applications to be considered. Ann Daniels disagreed with his proposal as such meetings allowed those affected by planning applications to see how the council arrives at decisions. After some discussion the councillors agreed that such meetings would only be cancelled if there were no applications to consider on the previous Friday.

Minor Amendments to Planning Application

Barbara Tait said that the Parish Council and private individuals may comment both on full planning applications as well as 'minor amendments' by going to SDC's website. Jason Bullingham and Terry Parker reiterated that the Parish Council is not formally advised by SDC when a 'minor amendment' is being considered or even when it has been granted and that the process appears to represent the subjective view of the Planning Officer.

richard knowles
bespoke furniture

built-in and free standing
bookcases, wardrobes and cabinets
also repair and restoration
free estimates.

Tel: 01453 767816
Mobile: 07968 652908

visit gallery at
www.richardknowles.co.uk

PARISH COUNCIL

The Library – a petition and a discussion paper

A petition signed by 506 local people was handed in by Mrs Isabella Szczurek and she read to the meeting her accompanying letter passionately supporting the retention of library services in the village. Ela Pathak-Sen then presented her discussion paper which covered library services and the future of the library building. *See separate article for our report, on page 13.*

Parish Plan

Martin Slinger and Ela Pathak-Sen reported that a full update would be given at the next Parish Council meeting.

Allotments

Martin Slinger reported 5 possible sites had been identified and would be presented to the public on Friday 19th March from 7.00 to 9.00pm and on Saturday 20th March from 10.00am to 12 noon at the Town Hall. The sites are the bottom strip of Gyde field, the Gyde Road/Gloucester Road triangle, an area off the bottom of Tibbiwell, Mop Tree below the Golf Club, Wick Street/Stepping Stone Lane, and two areas at Resthaven. He encouraged the public to come to the presentation. The consultation period will run to the 16th April at 4 pm. The working group will then present a report to the Parish Council which in due course will make its decision. (The area at Juniper Hill was added after the Parish Council meeting.) *See detailed report on page 4.*

Gas Road works

The Clerk reported that the total closure of the A46 had been put back to early May. Details will be published in The Beacon once finalised as will arrangements for bus services. Jason Bullingham expressed his disappointment at the delay which would affect local businesses badly.

County Councillor Report

Bed closures - Joan Nash reported that neither GCC nor the NHS Trust governors were consulted before the surprise announcement by the Hospitals Trust of the proposed closure of 200 beds in Cheltenham and Gloucester hospitals. The Trust had been asked to delay a decision until consultation had taken place.
GCC Household Recycling Centres – As from the 28th March these will now be open from 9.00am to 6.15pm every day except for Christmas Day and New Years Day.

Highways – By the end of February about 18,500 potholes had been repaired.

Emergency Plan

Martin Slinger asked that every road or street in the parish asks someone, who is contactable by email, to act as their street warden and pass on information in case of an emergency. In particular these people must be aware of where there are vulner-

able members of the community and, most importantly, no lists must be kept so as not to contravene the Data Protection Act.

Painswick Summer Arts Festival

Stephen Friar presented an application to the Parish Council for funding for the Summer Arts Festival starting on the 31st July and lasting throughout August with events all over the village. An extensive series of events are expected to take place on the opening day including a sculpture trail, live music, bell ringing and the participation of local colleges, schools and many individuals. The grant of £650 would cover printing costs and a new banner to hang over New Street. The meeting agreed to the request as well as to one for up to a further £300 from the Special Events fund if there should be shortfall.

Sheepscombe phone box

Dhushy Mahendran asked when the Sheepscombe phone box would become available to the community. The Clerk replied that when BT had stripped out the equipment, the phone box would be handed over to the Parish Council.

Resignation

Dhushy Mahendran offered his resignation from the Parish Council as a new job meant he would not have time to fulfil his duties. Terry Parker thanked him on behalf of the Council and the community and wished him well in his new job.

Fiddlers Elbow road works

Ann Burges Watson reported on the repair of the road at Fiddlers Elbow. 40 to 50 trees have been felled to allow repair work to be carried out but 150 new trees will be planted on completion. Retaining walls and a new culvert will be built with work starting in July and completed by December and costing £3.2 million. It may also be necessary to close the A46 for short periods. *See further information on page 5.*

Tree Surgery

Sapling to Veteran Trees
Fruit Tree Pruning : Planting
Stump Grinding : Seasoned Firewood
Fully Insured : 25 years experience



Clare Overhill & John Rhodes
Painswick 812709

Landcare Services
6 Pullens Road Painswick

Easter Bonnets

The members of the Ashwell Day Care Centre have been using their creative skills to good effect in two of their recent meetings. They have anticipated Easter by making and decorating some most attractive Easter Bonnets.

On Wednesday 17th March a panel of judges acknowledged their fine work by the award of prizes to them in six imaginative classes. These were as follows; smartest; prettiest; jauntiest; most fashionable; most colourful and most decorative.

The photograph of the members gives a good indication of their success in hailing some warm weather after the ravages of the recent tough winter. Congratulations to them all.

Gill Allen



What on Earth is Wearable Art?

On 31st July Painswick is having its' very own Wearable Art Parade through the streets as a way of launching its second annual Art Festival. What on earth is wearable art you may ask? It is the interpretation of one of the 3 chosen themes to create an extravagant, imaginative, bizarre, and maybe humorous but yet wearable creation with a real show stopping quality.

The themes for this the first year are:-

Lamb to Loom

Queen of the Cotswolds

Power Dressing (to reflect sustainable energy)

There will also be a category for a 'Weird and Wonderful bra' and we would like to use this opportunity to raise money for breast cancer.

There will be categories for

Primary schools Secondary schools
College/Fashion / art students
Individual artists Veterans

There will be some very generous prizes to induce participants in the various categories, including work placements for art/fashion students, designer fabric, and some sizeable cash prizes, to name only a few.

The entries will be judged for their creative content, interpretation and craftsmanship by a panel of esteemed judges, with the winning entries being displayed in shop windows in Painswick for the month of August as part of the Art Festival.

We know the event will cause a real 'BUZZ' around town, so would urge any creative people to get involved. To be inspired check out www.worldofwearableart.co.nz the show in New Zealand now enjoys world wide acclaim.

To find out more about Painswick's own show and be inspired please come to a Wearable Art Information and Inspiration Evening at Painswick Town Hall on Tuesday 20th April from 7.00-9.00pm. Cotswold88 have kindly offered wine for this occasion.

Don't forget to spread the word to all your creative friends.

To register your interest please contact libbygraesser@clara.co.uk

Libby Graesser



LEIGH YOUNG SOLICITORS

Expanding firm offers a full and comprehensive range of Private Client and Commercial Services. Extended opening hours by appointment are now available (to include Saturdays).

LEIGH YOUNG SOLICITORS

The Old Court Offices
 Willow Court Beeches Green
 Stroud GL5 4BJ
 01453 762114
contact@effectivesolicitors.co.uk
www.leighyoung.co.uk

Great bear leaps

The very bravest of bears are invited to step firmly into mid-air in central Painswick, before witnesses gathered below, if they can bear the thought of being assisted to the top of the bell tower on Sunday 23rd May. No age barriers apply, but owners under (or over) 76 particularly welcome, and if under 15 a pat on the back will signify the high quality of the descent.

This periodic parachute jump separates the Daddy Bears from the Baby Bears, although it has to be admitted that some Mummy Bears have demonstrated singularly attractive gliding prowess in the past.

No advance training on site permitted, neither is it recommended at home either. Just come along at midday on the 23rd of next month, willing to part with £2.00 in support of Lideta in Ethiopia, and the weather forecasters tell us that jumps between 12.00 and 2.00pm will be safe that afternoon.

So, St.Mary's churchyard beckons, as do

- Hot dogs,
- Ice creams and drinks
- Music and entertainments



For a moment of magic and mayhem for earthlings, and sheer delight for bears seeking their moment in the sun, their moment of glory.

Iris McCormick



RESTHAVEN

Resthaven, Pitchcombe, nr Stroud
 Gloucestershire GL6 6LS
 Telephone: Painswick (01452) 812682

RESIDENTIAL/NURSING HOME
 LONG TERM & DAY CARE
 SINGLE ROOMS
 PRIVATE CHAPEL
 BEAUTIFUL SETTING OVER-
 LOOKING
 THE PAINSWICK VALLEY
 Resthaven Home of Healing Ltd
 Regd. Charity No. 235354

Allotments

The Painswick Parish Council Allotments working party has now started the consultation process for suitable sites for allotments. At a presentation open to the public held on Friday 18th March and Saturday 19th March, the seven sites made available were illustrated by maps and photos and described under 21 headings ranging from size to type of soil, access, distance from the Post Office and visibility of the site from the surrounding area amongst others. A further map showed the total area that had been investigated. Soil samples were available from all the sites for the public to handle and the members of the working party were available to answer questions.

When the Beacon attended several members of the public were keenly examining the information on each site and asking for further information from Parish Councillors.

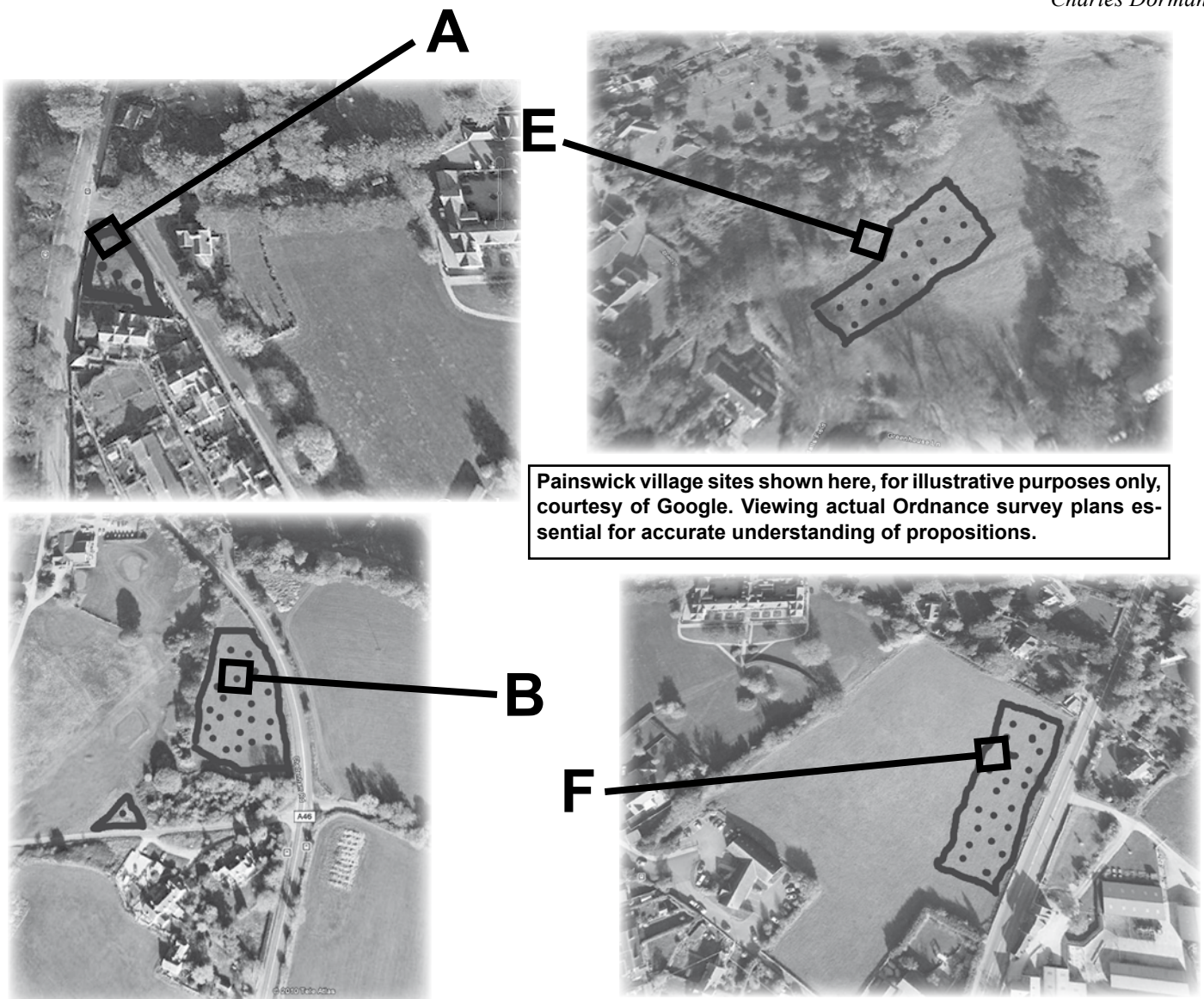
The consultation process will run until 4.00pm on Friday 16th April and members of the public may fill in a feedback form listing their preferences and making any other relevant comment. The form does not ask for personal details. Following the consultation period, there will first be a review of the preferences and comments to aid the selection of site(s) followed by an objective scoring exercise of the key criteria to assist in the final recommendation to the Parish Council for discussion and decision. The public may inspect the sites being considered and complete a feedback form up to the end of the consultation period.



The seven sites are:

- A. Gyde Road Triangle – at the junction of Gyde Road and Gloucester Road – 3 plots
- B. Land at Mop Tree – directly next to the A46 bordering the golf course – 30 plots
- C. Resthaven – the old kitchen garden – 10 plots
- D. Resthaven – the top field – 20-25 plots
- E. Tibbiwell – land at the bottom of Tibbiwell opposite the junction with Kingsmill Lane – 15 plots
- F. Gyde Field – next to the A46 – 30 plots
- G. Juniper Hill, Wick Street – at the junction of Stepping Stone Lane and Wick Street – 30 plots

Charles Dorman





The gas works . . . heading towards completion

Stage One - completion update

Edge Road to junction Blakewell Mead, including Kingsmead but excluding Blakewell Mead. New pipe alongside old in a trench.



These works are complete. They not only reached effective completion by the 22nd March as predicted, but with somewhat less inconvenience than many anticipated. Yes, round trips of eight miles to gain equivalent access to the A46 was a requirement for two or three weeks, but journeys were postponed or made to several destinations rather than repeated.

Many have been the complementary remarks made upon the manner in which the operatives tasked with making trenches in the road and installing the new pipework and new connections to properties. They stuck to the tasks in hand and got on with the job, and swept clean afterwards.

Stage Two - in hand

New Street between Victoria Square and Edge Road, now preceded by the stretch between Edge Road and Stamages Lane.

Temporary traffic lights: will be in operation throughout the period of working.

This complete section will involve inserting a new main pipe within that existing, and connections made to properties from that new main supply.

Those seeking to resume use of the rat-run between Edge and Painswick village are urged not to do so, as exit on to the A46 will be influenced by the temporary traffic lights and they may merely add to congested traffic flow.

Stage Three - postponed

Victoria Square to junction Gloucester Street complete closure now postponed until May, and will not start on 5th April.

The postponement arises because the contract associated with flood relief in the Slad Road has over-run due to unforeseen difficulties, and having both northbound routes from Stroud closed simultaneously could not be contemplated. Further information will be published next month.

Approximately two to three weeks for laying replacement pipe alongside old in trench.

Emergency

Residents who find themselves with an emergency situation as a result of the gas main renewal scheme should call Roy Balgobin on 812722 or 01452.621688.

All information relating to highways on these pages has been verified by County Highways, the contractors and the Parish Council

A46 Landslip repair below Fiddler's elbow



Readers here, and for many miles along the A46 between Stroud and Brockworth, will be interested to hear how the landslip which has for many years affected the carriageway is to be corrected.

The Beacon has been informed by John Kay, Stakeholder Manager with County Highways, that it is planned to have a public exhibition, located at Brockworth Community Centre (Main Hall), on Wednesday 14th April from 2.00pm until 7.00pm. This will be open to all interested members of the public to "drop in" and speak to staff from the County Council and Gloucestershire Highways to discuss the scheme.

'Confusions' reigns supreme!



With a cast of nineteen, this Painswick Players production promises to have huge entertainment value! It's in full rehearsal now, and the cast are working hard (and successfully) to make this play an evening to be remembered. Alan Ayckbourn has written a challenging script (no problem for the cast!) which focuses on the ways in which lonely and solitary people live their lives apart for the rest of the world. A little pathos, some gentle humour, some energetic action and a taste of 'surely I know someone like him (or her)' are part of the excitement of this series of loosely-linked sketches, which will hit the Painswick stage on 6th, 7th and 8th May. Tickets will be on sale from mid-April including from the Post Office.

Why not come straight from the Town Hall on Thursday 6th? (That is, after marking your ballot paper if there is a general election on that day.)

George Krasker

Painswick Educational Trust

The Trust will be meeting again shortly to deal with applications from young people resident in the Painswick area for financial help with their studies and apprenticeships. Previous successful applications have been made for money towards books, computers, catering equipment, course fees and educational trips. If you are interested in finding out more, please telephone Joy Edwards on 812588 or Michael James 812646 for an application form.



**Tree Surgery
Garden Maintenance**

Man with a saw:
Use me for your tree pruning and tree surgery
Flexible & local service
Rubbish disposed
Garden Maintenance

- Regular contract
- Winter maintenance
- Fencing
- Chipping

Firewood delivered locally
Fraser Hall
Brookthorpe Gloucestershire
07766 132903

Fully qualified and Insured

All Taxation & Accountancy Needs

We're here to help.
Forward thinking professionals with old fashioned values on service and quality.

price davis
CHARTERED ACCOUNTANTS

Tel: 812491 www.pricedavis.co.uk

The Old Baptist Chapel, New Street

**GOTSWOLD
EYE CALL**

**Eye examinations at home
- for the housebound**
Specialised service - free (NHS) for those over 60, including Glaucoma screening and full sight test
Tel. 01453 833272 or 07967 743676 (mobile)

Volunteers needed - please

Two helpers are desperately needed once a month on Thursdays – no cooking!

The Ashwell Lunch Club, started in the early 60's, is open to anyone living in the Painswick area over 65 who has difficulty getting hot meals regularly. Two helpers set tables for 10-12 guests. A hot two course lunch costing £2.50, delivered by the WRVS, is served at 12 o'clock and cleared away with the help of a washing-up machine.

Helpers arrive at 11.30am and finish about 1.15pm, every Tuesday and Thursday. A monthly rota enables swapping to take place for holidays etc.

Please contact Helen Baker on 813091 - who is waiting for your call!



Letters

The inclusion of letters, maximum 150 words, in these columns does not imply that the Beacon committee endorses the views expressed, or otherwise.

Allotments

David J Batty writes from The Highlands:

Last year, the proposal for allotments on Gyde Field divided the community. Both sides had their own views that just couldn't be reconciled – the council was going to disappoint either one side or the other. In the end everyone was left feeling aggrieved.

Surprisingly, Gyde Field still figures in spite of the controversy it raised last year. But now there is the opportunity for a positive outcome for everybody. The council has identified a large number of excellent alternative sites with longer tenure, better soil, available water, available parking and so on. With such a range of other sites available, we can now hope for a workable solution for all, which could re-unite the community once again.

and Maurice Maggs writing on behalf of the Painswick & District Conservation Society:

The Parish Council is commended for its efforts to find a satisfactory location for allotments, but this Society is disappointed that a Gyde Field site, now fully bordering the A46 is more intrusive than previously proposed.

The Council's description that Gyde Field is "Protected in the Parish Plan for agricultural use" is misquoted.

While pledging enhancement of the character of the CA and the removal of

eyesores, the Conservation Area Policy aims include, 'to prevent the destruction of the inherent character of the area through neglect or indifference and to ensure that any redevelopment or alterations do not detract from its appearance ... is designed not as a separate entity but as a part of the Conservation Area in sympathy with and enhancing its character'.

The Society is profoundly concerned to preserve the entry appearance of Painswick from the north. Before selecting Gyde Field for allotments from alternatives, the Council must first rescind those elements of the Parish Plan.

Town Hall and library

Mary Francis writes from Bisley Street:

Our Town Hall is such a splendid centre for so many events, its central and easy access for young and old. Who on earth wants to sell it and why?

Please, could the library 'van' be parked in the Town Hall car park? Stamages Lane car park is an uphill struggle, especially with an armful of books.

Library and GCC premises

Tom Capper writes from Paradise:

We used to live in a very small Derbyshire village, the library van called for 15 mins. To arrange a 25minute visit to Painswick in place of the existing 16 hrs. is ridiculous. Glos CC have deliberately left a listed building to rot (its been raining in for years) such that they achieve their aim to get rid of it.

We pay very high rates and get less and less services for our money.

I have returned the questionnaire (without any ticks) and asked who is responsible.

while Maurice Maggs writes, from P&DCS:

The County Librarian attributed the decision to close the library to "the continued high cost of maintenance". We asked for

the annual record of this and it transpires that the average annual cost of maintenance for the past eight years was £1,552, say the cost of two annual inspections and clearing the gutters. In 2007-8 the backlog of maintenance was assessed as £115,000. So GCC failed in its duty to maintain a listed building, depriving Painswick of a vital cultural asset. It has done this on top of frustrating the Gateway Project by its late imposition of unacceptable conditions of sale, scuppering a one-off chance to create the most positive of pedestrian links between the north and south of the village, a massive impact upon tourism, a major boost to the economic well-being of the village and existing and future traders, and a powerful focal point 24/7. Or has it?

Our elected representatives are responsible for this.

Time to consider Painswick's future

Terry Parker, Parish Council Chairman, writes:

Given the number of letters received by the Parish Council following the report of the Beacon's interview with Leslie Brotherton in the March issue, it is important to state the council's position. The Parish Council has determined not to sell the Town Hall. It has also agreed not to seek to purchase the former library building but to request that the County Council keep the Parish Council informed about the disposal process with the expectation that the Parish Council might influence the eventual use of the building. The proposal for a convenience store as set out in the report has not been endorsed by the Parish Council. The council has a duty to consider all matters raised by residents and that proposal along with other issues raised by the community will be considered at the next meeting of the council's Parish Plan working party.

DAVENPORT LANDSCAPES

ALL ASPECTS OF LANDSCAPE DESIGN & CONSTRUCTION

- NATURAL STONE WORK • PAVING
- BRICKWORK • DECKING • FENCING
- WATER FEATURES • TREE SURGERY
- TREE HOUSES • PLANTING & TURFING

01452 813660 or 07791 693439

Greystone Cottage, Pincot Lane, Pitchcombe,
Stroud, Gloucestershire, GL6 7QP.
mike@davenportlandscapes.co.uk
davenportlandscapes.co.uk

Tim Mifflin



CARPENTER
PAINTER AND
DECORATOR
BUILDING REPAIRS

tim@mifflin.fsnet.co.uk

Enquiries welcome

Telephone: Painswick 813866

Wick Street Security

Locksmith & Secure Solutions

Moved Home or Office? Who's Got Keys?

All types of security equipment supplied
& fitted to insurance standards.
Lock opening service & period lock
restoration.

Tel: 01452 812201 Mob: 07812 540178
Email: info@wickstreetsecurity.com

Gloucester Police male voice choir

A real treat in store on Friday 30th April when this well known choir will be performing between 7.30 and 9.30 pm in the Painswick Centre.

The doors and bar will be open at 7.00pm and tickets priced at £7.00 are already available from 'The Chairman', The Post Office, and on the door.

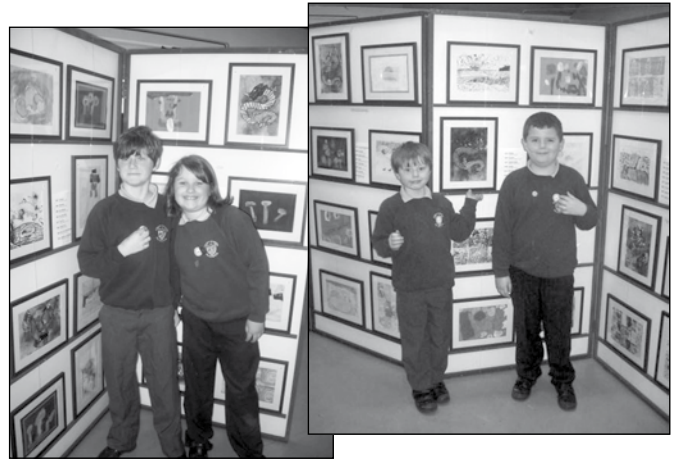
Judith Hill



By their deeds

On Tuesday 23rd March we held an art exhibition. Each child's work had been framed and mounted and parents were able to buy their child's work, helping to raise money for the school.

Here we have Gregor Workman and Lucy Nicholls (left) and Alphi Living and Joe Hill at the exhibition.



Throughout this term, children in Classes 3 and 4 have enjoyed percussion workshops, funded through the government's 'Wider Opportunities' scheme. Here children in Class 4 enjoying samba drumming.

The older children took part in a 'Quiz Club' competition, with the winners and runners up going to Balcarras School to represent the school in the next round, against seven other school teams. They didn't win, but they did very well and had a lot of fun!

The A team - Georgina Churchley, Louis Lovell, Ellie Yates and Alice Bradley.

The B team - Flo Simpson, Rhondda Warner King, Nathaniel Hatherley and Helena Cox



ELECTRICAL AND ALARM SERVICES

New Installations, Rewires, Extra Sockets
Lights, Showers, Security Lighting
Economy 7 Heating etc

Professional intruder alarm systems fitted from £300
Door Entry and Closed
Circuit Television Systems fitted



For a friendly, prompt and reliable service, contact

Steve Gallagher

07836 273768 or 01453 791209
ALL WORK FULLY GUARANTEED



CENTRELINE ARCHITECTURAL SCULPTURE

www.centrelinestone.co.uk

STONEMASONS
STONECARVERS
SCULPTORS
CONSERVATION
CRAFTSMEN



ADVISORS

Fairfax House, Vicarage Street, Painswick
Office: 01452 813892 Workshop: 01285 821074

Jude Wells
photography

Capture that special moment

Portraits in a studio or your own home.
Events, birthday parties and anniversaries.
Corporate and marketing photography.
Prints from around the local area.
Commissions gladly taken on request.

All packages include a CD of all images, no hidden costs.

For more information please call
01452 814 565 or 07958 528 234
or visit www.JudeWellsPhotography.co.uk

Magra

Letter from El Contador is on holiday in and around Painswick during April and I must say how much we are looking forward to it. The



bottle of Rioja in answer to the question "what is Magra?" was won by Mr. Peter Roberts of Stamages Lane - Salud!



Magra is actually a boneless cut of meat, usually pork but can also be of beef and depending upon your locality it is either fatless or fatty. Our Spanish friends will cut the magra into small chunks, fry in olive oil with plenty of garlic and serve it with a warm homemade tomato and pepper salsa and fresh bread to mop up the sauce, washed down with a light Rosado - 11 Euros for a case of 12 bottles around here.....

Christopher Piper-Short

Yew tree maintenance St Mary's Church

A recent survey of the yew trees in the churchyard revealed some problems.

Two trees are growing over the paths and will be cut back. Another is clearly in decline and requires serious attention. This will be a careful 4 to 5 year staged project with the top cut first together with clearing out much of the congested interior. The sides will be cut in later years. As the tree is in a group of four at the path crossing point near the north east corner of the church the adjacent trees will be cut in height to maintain symmetry and also cleared out internally.

The tree that collapsed during the floods of 2007 has recovered well but now needs some careful trimming to help it along. The nearby tree also needs attention. The yews along the path from the Lychgate took many years to recover from their cut so expect to see the odd untidy tree during the rejuvenation period.

Incidentally, the heavy snow seems to have had little, if any, impact on the larger specimens. Work on the trees will begin in the middle of this month.

Michael Wilson

Local History Teaser



This pensive character was a famous local man, indeed his name is still very well-known. Can you name him and do you know anything about his life and the work for which he met with such acclaim?

Last month's photograph, kindly lent by Trevor Radway, showed the corner of Friday Street and St Mary's Street circa 1939. The newspaper notice outside the shop says 'Hitler Today' and, rather ironically, it was this very corner which was bombed in the early hours of 15th June 1941. Over a decade later, after much wrangling over the detail, the site was re-built and the road widened as we know it today. Many thanks to Trevor Radway for the loan of this picture.

Mr Neville Cook has contacted the Beacon to say that the photograph of Musgrove's shop in the January issue showed Mr Musgrove together with Donald Cook of Vicarage Street and Joyce Musgrove, one of the sisters.

If you have a photograph which you think would present an interesting challenge to readers, please get in touch.

Carol Maxwell



... and the Local History Society

At the March meeting Aylwin Sampson's talk, Exploring Towns, was beautifully illustrated with his own line drawings of places and buildings of interest, which illustrated the many and various aspects of our historic towns and villages. The choice of this medium, rather than photographs, concentrates the mind on the subject and serves to highlight the important elements of the street scene. The illustrations took us to many well known historic English towns and some less well known, but always showing that there is potential for interest everywhere. When we visit places, or indeed walk about where we live, we can all learn to observe the layout of the streets and different styles of buildings and look at variations in windows and doors and other architectural details. All of these things can tell us about the history of the place, perhaps an earlier economic function or more prosperous times past. What we see today is part of a continuing development, which must strive to respect the past.

Carolyn Luke

At the next meeting of the Local History Society members will present their findings on three research subjects of great interest locally. Croft School, 7.30pm, Tuesday 20th April. Everyone is welcome.

PAUL. A. MORRIS

General Building LTD

Extension* Renovation*

Stone work* Plastering* Patios*

Kitchens* Bathrooms*

Tel 01452 814524 - 07818 087375

Email paulmorris72@btinternet.com

Member of Federation of Master Builders

Cardynham House **BISTRO**

*Romanian Evening
2nd May*

*Join Catalina and Marian for
a real Romanian experience*

for bookings telephone

01452 810030

DAVID ARCHARD

in association with

**Philip Ford & Son
Funeral Directors**

Part of Dignity plc. A British Company

*Private Chapels of Rest
24 hour Personal Service*

Dirleton House
Cainscross Road
Stroud

01452 812103 or
01453 763592

The Quiz

– the thank you



It did go well. Thank you – all 26 times four minus one plus 12 (readers, runners, scorers), plus Wol-the-bar and Chris-the-grub. You all made it a memorable evening. Thank you Helen Boydell for filling in as our third runner.

If you're interested in the scores and positions they are listed here, but it is not the winning (or losing) but the taking part.

You didn't moan, you said thank you, you ate most of the food (please bring doggy bags next year) you tidied up afterwards – I think I might almost do it again. And if you're wondering about my arithmetic, specifically the 'minus one', I was told a member of one team forgot to come. He knows who he is. And so do three others. But lets look on the bright side - at least his team got to eat his food.

Charles Dorman



St Pattern's Five



Position	Team Name	Score
1	St. Pattern's Five	102
2 =	Gli Originali	101
2 =	The Coasters	101
4	The Irregulars	100
5	The Slashers	94
6 =	Freddie's Fan Club	92
6 =	The New Four	92
8 =	The Rosie Four	90
8 =	The Wessex Folk	90
10	The Searchers	89
11	Painswick Gramophiles	88
12	3 Glasses & A Bottle of Plonk	84
13	Quasimodos	83
14	High Fliers	80
15 =	The Bookworms	78
15 =	The Village Idiots	78
17	The Conservators	77
18 =	Esmeraldas	75
18 =	The Winter Girls	75
20	Seeds & Weeds	70
21	Why Fours	65
22 =	Ashwelian Bowlers	64
22 =	The Has Beans	64
24	Natty Matty Bowlers	60
25	Recycled Teenagers	57
26	Pre Mensa Tension	53



Gli Originali



The Coasters



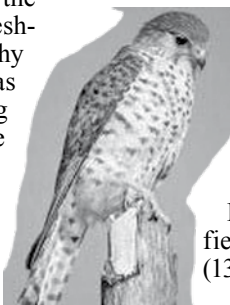
Pre Mensa Tension



Indian ocean islands + birds

On 11th March David Cramp, Group leader of Gloucestershire RSPB Local Branch, came to address the club regarding his experiences of the amazing archipelago of the Indian Ocean from the Seychelles in the North to Mauritius and Reunion in the South. Apart from the magnificence of the birds portrayed, one's most abiding impression was of the truly horrifying impact of man and his mammal imports to the islands both on the plant and bird populations. At the same time, it was refreshing to hear of the advantages of the small-island geography in eventually providing effective sanctuary for wildlife, as well as of enlightened government attitudes in establishing comparatively large national parks and in trying to eliminate the inappropriate past animal imports.

The depredation created with man's arrival on the islands, is universally recognized in the phrase, 'dead as a dodo!' Origin of the name is confused - Dutch 'sluggard' or 'knot-arse' - Portuguese 'crazy' - all names fitting for a flightless 'pigeon' of Mauritius of some 20kg, rather obviously soon



to become extinct in the late 1600s. Clearly much the same was to follow for many species but it was good news to hear of the recovery of important rare-bird populations such as of the pink pigeon, echo parakeet and of the Mauritius kestrel (pictured), the latter having increased from some four to several hundred - so we seem to have learnt a few lessons?

The new season commences on Thursday 8th April at 7.30pm in the Town Hall when Andy Warren, Ecological Consultant, will recount his adventures in the RSPB reserves with the title, "A Wandering Warden's Eye!" This will be a joint meeting with the Painswick Beacon Conservation Group. Everyone is welcome!

Joining the Car Boot Sale at the Archway School on 25th April is eagerly anticipated and we would very much like to receive further saleable items that may be delivered or collected. Please telephone 813094.

It's still not too late to book a place on our weekend field trip to look at the wildlife of the Gower Peninsula (13th -15th June).

Wendy and Martin Addy

White Elephants

Thinking ahead to the hopefully balmy days of June and to the welcome return of the Painswick Fete in the grounds of Painswick House - I wondered if you would please donate your best quality white elephants to my stall? I'm looking for old and interesting household items that have become unloved, that you would like to see re-homed. As Spring is here, please round up your white elephants wherever they lurking: under beds, beneath the stairs, in sheds, in the attic, down the cellar and let them have new homes.

I was hoping that the stall would look something like one of those fascinating French brocante stalls that while away whole afternoons on holiday: a shabby chic folding chair; a must-have pith helmet; a few chamber pots with hardly any chips; a pile of vintage linen, nicely foxed; a set of useful rusty keys in an old biscuit tin and a old leather purse with lots of compartments. I am pleased tell you that I have already been offered a useful and traditional fish kettle in a new and boxed condition and I hope to build around that with other well-meant (but unused) Wedding presents.

If you have dabbled with ebay, dabble no longer because I will take the offending white elephant away, without you having to upload a single photo or write a truthful-but glowing-description to go with it. You can also bask in the knowledge that you have contributed to not one but two worthy causes, namely Cotswold Care Hospice and the fabric of St Mary's Church.

So, between now and 19th June and especially after your Spring Clean, I would like to hear from you; I can store your items large or small safely until the big day.

Gillian Hancock 813892 or 810723



DASH

Delivering Aid to Stroud Homeless

We are very grateful to everyone who contributed cuppa soups and easily prepared meals throughout the cold weather. These are still welcome even though spring is - we hope - just round the corner. For Easter we are asking for small gifts of toiletries (a bar of soap, a tube of toothpaste etc) and for bags of easily shared out sweets (e.g. a bag of small Twix or Mars bars). Any contributions can be put in the boxes at the backs of the churches at weekends or in Murrays Estate Agents during office hours.

Please continue to collect your loose change - 1ps, 2ps or 5ps are all welcome and it is amazing how quickly it all mounts up and enables Marah (the Stroud charity through whom we work) to buy small emergency items for their homeless and needy clients. Contact Alison Robinson on 812286 or Frances Watson 812071 who are happy to come and pick it up.

Alison Robinson



Caroline Crawford
INTERIOR DESIGN

- Interior Design
- Made to Measure Curtains
- Soft Furnishings & Fabrics
- Upholstery & Wallpapers
- Paint Techniques & Flooring
- Lighting & Accessories

Opening times: By Appointment
Telephone **07957 867389**
www.carolinecrawfordinteriors.co.uk
email: cci@carolinecrawfordinteriors.co.uk



Professional Ironing Dry Cleaning & Laundry Service

FREE Collection & Delivery



Tel: 01452 740129
www.ironeasy.freeuk.com
Agent for Johnsons Dry Cleaner



three gables
dental, holistic + beauty centre

- ▷ PREVENTATIVE AND COSMETIC DENTISTRY
- ▷ COMPLIMENTARY THERAPIES
- ▷ FACIAL REJUVENATION

All in a relaxed and friendly environment with early, late and Saturday appointments available. On-site parking also available.

LET US BRIGHTEN UP YOUR SMILE

cheltenham rd painswick glos GL6 6XN
01452 814427
www.thethreegables.co.uk

Enigmatic

There was a definite buzz at our Busy Bees Lunch held in Christ Church Hall on 25th February, where fifty ladies enjoyed fantastic food and convivial company, while waited on by willing WI workers! We have been assured it was a resounding success by those who came, and we are pleased to report that the event raised over £445 towards preserving the bee population in Painswick. Part of the money will go towards research into the cause of the decline in the bee population, and the rest will be used to buy hives to be situated in Painswick. Thanks must go to all who supported the lunch, and the hard working committee and other members who made it possible.

At our February meeting members were given clear instructions on how to plan a wardrobe of clothes by Sarah Cook, who suggested ways to get the most out of a coordinated ensemble. It was also clear that most ladies have clothes in their wardrobes that are never worn and need to be cleared out.

Ladies, have you ever wondered about the people who were employed at Bletchley Park, breaking the Enigma code, during the war? If so, you are in for a treat on 27th April if you come and join us at the Town Hall at 7.30, when Kitty Smithies, a Painswick resident, will talk about her experiences there. You will be made most welcome, and have an enjoyable evening to boot!

Janine Clarke clarke_uk@btinternet.com



The true Cottage Garden



Kim Hurst runs the Cottage Herbery in Tenbury Wells, and spoke at our meeting on 10th March

on the pleasures of developing a cottage garden. In his vote of thanks David Crispin summed up the prior misconceptions of many of the listeners in his vision of roses round the door and beautiful flower borders. The reality, Kim Hurst explained, was of vegetables, herbs, chickens and self sufficiency.

With the harsh winter we have just experienced spring is about a month late which has resulted in dying herbs and a real concern for Kim's nursery in getting plants destined for Chelsea at peak perfection for the Help the Heroes garden. Plants which should now be bulking up are barely breaking through the soil.

Wild flowers, herbs, vegetables, flowers and beneficial insects jostle for space in an organic setting. The choice of plants was much more restricted in the past than it is today as gardeners only had access to locally growing plants and cuttings from neighbours or 'the big house'. Today we are fortunate in benefiting from plants brought back by intrepid plant explorers and the expertise of science in producing a wider variety of species. The concept of mixed planting, scent to attract pollinating insects, the practice of composting and sharing plants and cuttings is still very much part of the modern cottage garden.

To complete this fascinating evening the committee has arranged for members of the Horticultural Society to visit Kim Hurst's nursery and see what 'A True Cottage Garden' looks like in reality.

The next meeting is at 7.30pm in the Town Hall on 14th April with a talk about Box, Yew and Topiary. If you are interested, please come and join us.

Elizabeth Gardam

Annual General Meeting



The Annual General Meeting of the Painswick Centre will be held at 8.00pm in the Cotswold Room at the Painswick Centre, on Tuesday 13th April. Painswick residents will be most welcome to attend the AGM, which is an opportunity to meet the Trustees, hear about their work in the last year and their future plans,

and to ask questions. Further details may be obtained from the Secretary, Sue London, telephone 813791.

Our next event will be the Gloucestershire Police Male Voice Choir in concert, which is being held on Friday 30th April. *See detail and picture on page 7.*

The Painswick Centre has recently achieved the Level 2 Award of the Hallmark Scheme operated by Action with Communities in Rural England (ACRE). The Scheme is designed to foster the delivery of effective and well-managed village halls through a quality standards scheme backed up by peer visits, which provide independent, external validation of achievement.

Jane Rowe 813228

JOHN DANDY MOTORS

- ➔ MOTs, Servicing and Repairs
- ➔ Free collection & delivery service
- ➔ Proprietor Painswick resident
- ➔ Free courtesy car
(subject to availability)
- ➔ Quality & value where it counts
Established 1969

Goodridge Avenue, Gloucester GL2 5EA
☎ (01452) 527340

• painswick osteopaths •

Paul Stamp D.O.
Helen Froggatt D.O.

Tel: 01452 301748

Painswick Surgery, Gyde Rd. Painswick

- Structural
- Cranial Osteopathy
- Sports Injury
- Migraine/Whiplash
- Parking Available

PAINSWICK ELECTRICAL SERVICES

- ✓ 40 years' experience
- ✓ 24-hour Emergency Service
- ✓ All electrical work undertaken
- ✓ Inspection & Testing
- ✓ Free Estimates
- ✓ PART P REGISTERED

Mike Turner: 01452 812659
01453 758342 / 07850 784899

The Carducci and Talich Quartets



April brings to Painswick a 'gut', a 'bridge', or, better perhaps, a 'tremolo' (choose your own noun) of string quartets to give us, amongst all the wonders of violins and violas, a good earful of cello support. First off the mark is the 'Carducci' quartet, fresh from having put on another impressive workshop for the 'Croft' school.

Again the children were treated to a fine display of the wonders of classical music by Mendelssohn, Haydn, Huang Ruo, Beethoven and a Moeran Quartet (see below). Following their last visit thirteen pupils took up instruments and brought these with them to participate in performance for the first time. I am told they made a wondrously good sound substituting for bagpipes in perfect rhythm to 'Scotland the Brave', inspired by the Carducci's return from Scotland.



On 10th April the Carducci's programme of quartets will comprise ones by Haydn, the composer who really opened the door on chamber music (composing a massive 68 quartets), by Moeran, England's much overlooked composer of the 20th century who had an ear for folk and dance music, and, of course, from the great Beethoven, music he composed in the Russian style.

Then we have the 'Talich' quartet on 24th April, one of the best Czech ensembles of the present day, with a distinguished record of past accomplishments. They also start with Haydn, the 'The Lark' quartet, followed, as one might expect, with those great geniuses of Bohemian music, Smetana and Dvorak. Those two composers changed the direction of Czech music, or of Bohemia and Moravia as it then was, with their furious dances (think The Bartered Bride). So roll up at St. Mary's Church for the authentic Czech sound. Both concerts are 3.00pm. See you there.

Maurice Maggs



From Russia with Love

... might have been the title of a wonderful concert of all-Russian music given in the Birmingham Symphony Hall on 2nd March. It should have been performed by the Dallas Symphony Orchestra who had to cancel their tour because of the economic situation, but their excellent conductor Jaap van Zweden came with the Netherlands Radio Philharmonic instead - a marvellous combination. Mussorksky's Dawn on the Moscow River (Prelude to Act One) from Khovanshchina set the scene for what came to follow: Prokofiev's Piano Concerto no. 3, his most popular and rounded, combining lyricism and pungency with the brilliant Macedonian pianist Trpceski's virtuosity handling melody and percussion to remarkable effect.

To end, Rachmaninov's Second Symphony, one of the great romantic orchestral works, with the melancholy of the slow

movement followed by a great finale, with exuberance and yearning alternating before a noble and electrifying ending.

A lovely evening, enjoyed by many members and several guests who we hope will join in due course.

Ralph Kenber



and Haydn to follow

Howard Allen gave us a presentation of the symphonies of Franz Joseph Haydn, who died 200 years ago last May. Haydn worked in the Esterhazy household for some 30 years until Prince Nikolaus died in 1790 and the musicians were dismissed by his successor. Haydn was however left with his salary. Around 1781 he met Mozart and they became great friends. In 1791 Haydn was invited to go to London where he stayed for some 18 months. He was well paid, feted and entertained by royalty. While he was there, he composed his Symphonies No.93 to 98.

Howard played for us the first movement of Opus 96; it was full of life. Next, we heard part of No.94, the well-known "Surprise". In those days, the audience sat round in comfortable chairs, and this Symphony was intended to wake them up! No.97 and 98 brought in trumpets; 98 was Haydn's farewell to Mozart.

From 1792 to 1794, Haydn was back in Vienna, where he composed No.99 to 102, of which we heard extracts, and No.103, The Drum Roll, of which we heard the fourth movement, a rousing experience. Finally, we heard extracts from all four movements of Symphony No.104, one of the works specially commissioned for Haydn's return to London in 1794, and the last symphony composed by him. It had some memorable passages. Haydn's second visit to London was a great success.

We owe Howard our thanks for an interesting and informative evening.

Richard Burges Watson



GODDARD'S GARAGE

Cheltenham Road Painswick

- Full servicing & repair facilities
- MOT preparation & repairs
- Private hire - local or long distance
- Petrol/ Diesel/ Tyres/ Exhausts
- Paraffin/ Coal/ Calor Gas
- Car valeting
- Air conditioning

Personal attention for your car

01452 812240



**Cedar
Motor
House**

**MOT
Testing
Station**

Grove Court,
Upton Hill
Upton St. Leonards
Gloucester
Tel: 01452 617240
Mob: 07976 322735

Situated just off
Upton Hill. Grove
Court is 100 yds
past the Kings Head
Pub on the right.

The Library – a petition and a discussion paper

The petition

Isabella Szczurek handed in a petition signed by 506 local people to the Parish Council in support of retaining a library service in Painswick.

Her accompanying letter addressed to David Paynter, Head of Libraries and Information at Gloucestershire County Council was read out. *The text of the letter is reproduced in full on the front page.*

Terry Parker thanked Isabella Szczurek and assured her that the petition and her letter would be forwarded to David Paynter.

The discussion paper

Ela Pathak-Sen presented a discussion paper, in response to Leslie Brotherton's letter to the Parish Council last month, on the future of library services in Painswick and also of the library building – short term solutions and long term impact. Her purpose was to indicate short term measures to reinstate library services and assist the Parish Council in agreeing a way forward on the future of the old library building.

Library services include a lending service for books, CDs and DVDs, developing reading and studying skills in children and young people, accessing information and using the world wide web, space to meet, discuss, read newspapers and use computers, a facility for businesses to receive and give information and finally provide information on tourist and other facilities in Painswick.

Short term solutions.

Various new locations have been considered for the library but the only two viable options are the upstairs room at the Town Hall (Option 1) and the ground floor at the old Lloyds Bank building in Bisley Street (Option 2). Several issues would need addressing – financial support from GCC, supply of computers, fittings etc, what conditions would apply to the provision of computer and internet services, the management of the facility and the future of the mobile library.

Ela listed the pros and cons of both sites with the old Lloyds Bank building having many more advantages such as situated on a main road with disabled access, enough space to allow all the desired services including Tourist Information, toilet facilities on the same level, storage, courtyard suitable for a café and support from some sections of the community. The disadvantages were the leasing cost, set up costs, computer set-up and broadband costs and opening hours.

She has also considered a third option – doing nothing. This would allow for the outcome of the consultation period, due on the 4th June, to be considered. However the disadvantages include potential loss of public interest, and thereby GCC inferring that Painswick did not want library services and also the Tourist Information Office's requirement to be open by Easter.

Medium to long term solutions

These revolve around the old library building – its value, what would happen to it if GCC dispose of it and the possibility of the Parish Council acquiring it.

Ela listed five options.

Option 1, 'do nothing', would avoid the Parish Council taking on a building requiring considerable expenditure. The disadvantages are the loss of a valuable public building and the loss of a chance to acquire a valuable asset.

Option 2, take over or buy the building at a reduced rate, would allow library services to be restored there and would add an asset to the Parish Council's portfolio. However the cost would be high and the Parish Council would have to raise the necessary funds.

Option 3 is for the Parish Council to join the Gateway scheme as trustees which would allow the risk to be spread and permit the Parish Council to develop a business plan to the advantage of all the people of Painswick. However the Trust would have to be re-established and monies raised, the Parish Council would also have to raise money and GCC may not choose to dispose of the building to the Trust.

Option 4 is for the Parish Council to work with GCC to determine how the space should be used – for example affordable housing or

a retail outlet. This would allow the Parish Council to influence the future use of the building but might imply some financial risk.

Option 5 would be to use Section 106 of the Town and Country Planning Act 1990 to allow a legally binding agreement with the owner of the library building to create access to the village from the car park. However both the cost to the Parish Council and the impact on existing buildings and landowners are unclear.

Terry Parker read out a letter from Anne Smith about possible locations for the Tourist Information Office. To summarise, many locations had been considered from the St Marys church to the Painswick Centre and even retail shops and pubs. Anne concluded that the only suitable premises was the Lloyds Bank building and with the help of Jason Bullingham had negotiated a reduction in the rent for the first 12 months from £7000 to £5000. As Tourist Information has no money, a sponsor or backer would have to be found. Some help would come from SDC's Regeneration Projects department which would finance the installation and running cost of a telephone. Finally Anne hoped that with the new premises and sufficient volunteers the Tourist Information Office would stay open all year and not just from Easter to October.

The meeting discussed the short term options first. Terry Parker stressed that Tourist Information needed to be up and running by Easter which required a decision this evening. Martin Slinger said that the Parish Council would have to fund the first twelve months rental of the old Lloyds bank building and thereafter it can be pre-empted. Joan Nash stressed that if the Parish Council established a library service Painswick would be in a much stronger position to negotiate with GCC at the end of the consultation period. Disadvantages of using the upper room of the Town Hall include bookings already taken for the summer, the room would only be open when the Town hall was open (two mornings per week) and access would be through the office which would compromise security. Also Tourist Information did not think it was a suitable location. At the end of the discussion, the meeting agreed unanimously to choose Option 2 of the short term options. A working party of Jason Bullingham, Martin Slinger and David Hudson was set up. They may co-opt Anne Smith and other interested persons.

There followed an energetic discussion of the long term options. Ann Burgess Watson envisaged an up-market small supermarket and not another convenience store. David Hudson said that the Parish Council should not be involved in saving the library building and should not take on any financial commitment. The library building was a white elephant, he said. Terry Parker said that members did not wish to sell the Town Hall building. He then read out a letter from David Paynter, Head of Libraries at GCC which said that no decision would be taken about library services in Painswick until the end of the consultation period which is envisaged for the 4th June. Then he read out a letter from Simon Tyrell of Property Services at GCC which said that no decision on the library building would be made until the outcome of the consultation process was known. Simon Tyrell asked whether the Parish Council was interested in purchasing the building or merely in following the progress of its disposal. The view of the majority of members was that the Parish Council was not in a position to buy the building but was interested in its future. Ela Pathak-Sen argued passionately that the Parish Council should be proactive and ask GCC to give or sell the building to the Parish Council. Terry Parker said he would draft a letter to GCC stating that the Parish Council is not interested in purchasing the building but wishes to follow the progress of its disposal with the expectation that it may be able to influence its eventual use. Members were invited to add points they wished to be included in the letter.

The discussion concluded with the meeting thanking Ela Pathak-Sen for her hard work in preparing the paper.

Charles Dorman

Stone Wall

For monument of native skill
In timeless texture living still,
For austere beauty, slowly grown,
Give me a wall of quarried stone.

A wall of Cotswold stone I mean,
With toppers set on edge and clean;
Not of the smooth cemented kind,
But stone, rough-hewn, with small to bind.

One of the walls that trophies bear
Of rusted scythe and worn-out share,
Of clay pipe stem and cattle bone,
Back to the times Napoleon.

A sturdy wall with middle filled,
The kind of wall they used to build
When horse and cart from quarry plied
The white lanes of the countryside.

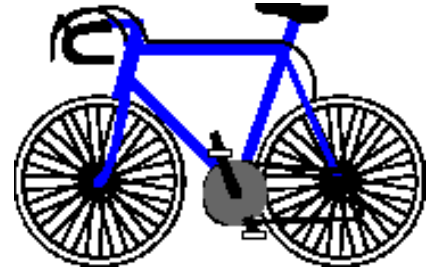
A wall where truant tom-cats roam,
That hunting weasels know as home;
A wall where man may cool his head,
Or sleep beneath, or lie down dead.

Blaze on my shield, prosperity,
A horse, a plough, a headland tree,
A furrow turned and, circling all,
A tidy stretch of dry stone wall.

This poem has been included this month for a reason. Can readers deduce that reason?

The London to Paris Bike Ride – 21st – 25th July

I will be undertaking with my children, Thomas and Alice, the challenge of a lifetime in July this year when we endeavour to cycle 300 miles from London to Paris. Not only will we be challenging our fitness, willpower and mental strength – we will be raising vital funds for the charity Action Medical Research.



Action Medical Research is a leading independent medical research charity. For nearly 60 years they have been instrumental in the development of some of the most significant breakthroughs in recent medical history beginning with the UK polio vaccine. Although the charity has changed so many young lives – protecting babies from the damage that rubella can bring, allowing the development of the unborn child to be viewed through ultrasound scanning, and increasing the chances of a child surviving a liver transplant for instance – today's challenges are no less serious, no less distressing. There is much more to be done. But the medical research that they fund offers hope.

I am now looking to forward thinking people like you to invest in the vital work done by Action Medical Research by sponsoring me or donating products that I can raffle to raise towards my trip and their vital work. If you would like to make a donation, please do so on line at www.action.org.uk/sponsor/unwin or send to my home address at Parkbank, The Park, Painswick, Glos GL6 6SP

To find out more about the ground breaking work of Action Medical Research, you can visit their website www.action.org.uk

The London to Paris Bike Ride 2010 has the potential to make a significant contribution to their work in the medical world. Both Action Medical Research and myself would greatly appreciate any donation that you can make. I would be delighted if you could sponsor me in this truly amazing challenge. I will be keeping all my sponsors informed of my progress. If you would like to know more about the challenge, please call me on 07799.761068

Jon with Thomas and Alice Unwin

Fair Trade recipe for Orange and chocolate biscuits

Makes 30

Ingredients

150g (5oz) butter or margarine
175g (6oz) Fair Trade golden caster sugar
175g (6oz) plain flour
2 teaspoons baking powder
75g (3 oz) Fair Trade chocolate, chopped
Grated zest of 2 oranges
1 tablespoon orange juice
Extra Fair Trade golden caster sugar to decorate

Method

Preheat the oven to 180°C/350°F/Gas 4 and grease a couple of baking sheets. Cream the butter and sugar together until they are pale and fluffy. Carefully mix in the flour and baking powder. Add the rest of the ingredients until you have a

smooth, stiff paste. Roll out the paste 5mm-1cm (1/4 in) thick on a lightly-floured working surface. Using a 5cm (2in) cutter, cut out the rounds and place on the baking sheet. Sprinkle the biscuits with a little additional sugar and bake in the oven for about 12-15 minutes until the biscuits begin to colour. Remove from the oven and leave to cool for at least five minutes to allow the biscuits to firm up before transferring to a cooling rack. Store in an airtight tin.

Keep an eye on the biscuits while they are cooking, they need to be taken out when still soft, but will harden as they cool.

Peter Barnfield
Painter and Decorator
Need a hand with your decorating
or odd jobs?

External/Internal decorating
Paperhanging – no job too small.

Free Quotations
References available on request
Call me on Tel: 01452 411182
Mobile: 07881408380
Peter.Barnfield@blueyonder.co.uk

THE PAINSWICK PHARMACY

NEW STREET

PAINSWICK (01452) 812263

OPENING TIMES

MONDAY to FRIDAY

9.00 - 1.00 and 2.00 - 6.00

SATURDAY

9.00 - Noon



JOE REED



General Plumbing

And Minor Domestic Electrical work

01452 813499 07967 742601

City & Guilds and EAL certified

For more details please visit:

www.joereed.co.uk



ending at Painswick

Cotswold Way Challenge
Saturday 19th June

Start at Cleeve Hill, Cheltenham

Take part in the St John Ambulance Sponsored Walk and show your support for a local charity! The event encompasses the ethos of St John Ambulance, allowing people of all ages to take part and share a sense of achievement.

As an organisation we receive no government funding and rely on generosity from the public to continue our vital work. Funds raised from events like these are essential to our survival.

The Families Walk – 2 miles - a chance for families to have an exciting day out, get some exercise and support a local charity The Leisure Walk – 6 miles – for people young and old yet a reasonable distance to cover (including those not of marathon ability!)

The Walkers Walk – 13 miles - aimed at the seasoned walker: a good day's walk and a chance to take in some stunning scenery The Challenge – 24 miles - for people of all ages wishing to stretch themselves a little further!

It costs £10 per person to take part (£20 for families), for which you get a wristband, water, parking and transport on the day, a goodie bag- including a mini first aid kit and the satisfaction of knowing your money is supporting a good cause. There's no minimum sponsorship. Come on, put your best foot forward and help support St John Ambulance in your area!

To register, or for more information, please contact Chloe Moorhead on 01452.858220 or at cotswoldway-challenge-2010@glos.sja.org.uk

More than stamps

... so much more at the Post Office

Did you know that your Post Office offers more than 160 products and services? Of course it would be impossible to list them all here but over the next few months the Beacon will give information about some of them of which you may not be aware, or have perhaps forgotten about.

Renewing your car tax at the counter is very straightforward, and very quick with instant receipt of your new disk. You can also pay your BT bill at the Post Office and at no charge. This information is not given on your bill and many people do not realise that this easy paying option is available. With the forms on hand, applying for a passport can be made easier with the Post Office's check and send service, costing only £8.00. And, of course, you can top up your mobile phone at the counter.



One service of which many are unaware is the Alliance and Leicester business banking through the Post Office. Such easy access right here in Painswick is a real boon and Karen is keen to encourage all local businesses to make use of this service. Indeed, those businesses which used to bank with the Post Office here in the past would be warmly welcomed back. Leaflets are available and Karen will guide you through the details.



Leaflets are available and Karen will guide you through the details.

As the holiday season draws closer or you need to make a trip abroad you can collect Euros and US dollars at the counter.

For all other currencies, provided you order before midday, you can collect your money the next day. Quite apart from currency you can also take out appropriate travel insurance through the Post Office. To be able to conduct all these necessary transactions in one location, which has the added bonus of being so close at hand too, is of course very advantageous. Furthermore, if you are worried about your post building up whilst you are away from home you can make use of the Post Office Keep Safe Service. It can certainly add to your peace of mind about security.



On the subject of postage stamps you need to be aware that the price of postage generally will increase on 6 April. Information is available in the form of leaflets from the Post Office.

And last but not least, the Post Office will not be affected with regard to opening during the forthcoming road works and gas repairs. Many people have expressed concern about possible closure but it is definitely business as usual throughout the upheaval.

We are very lucky in Painswick to have our Post Office and especially fortunate to have Karen Judd as Post Mistress. Do take a look at the surprisingly wide range of post Office products available and the very personal service Karen gives. It is vital that we all make full use of the services provided if we are to retain both.

Carol Maxwell

Brinkman Building Ltd

Building, Plumbing and Carpentry work.

Kitchens and Bathrooms designed and fitted.

01452-812924 - Evenings
07796-440101 - Mobile

spaceintense 01452 813658
hire@spaceintense.co.uk
www.spaceintense.co.uk

Garden Party Tent Hire

A La Carte Private Hire

Tel: 01452 813268
Mobile: 07748 235164
Sandra Walklett

Any Distance – Airports, Seaports, etc
Quotations Without Obligation

Cotswolds88hotel & Restaurant

Set menu lunch offer
2 courses for only £10
(Available Tuesday-Saturday)

Ambianza Beauty
Offering a full treatment menu
Open Wednesday-Sunday

T: 01452 813688
E: reservations@cotswolds88hotel.com
www.cotswolds88hotel.com

Cotswolds88hotel, Kemps Lane, Painswick, Gloucestershire, GL6 6YB

A New Season and a New Look at the Falcon Bowling Club

Now that the rigours of the winter are behind us, bowlers up and down the country are looking forward to the new season. At the Falcon, the season starts with the "Green opening" on Saturday 24th April and will go on until 24th September.

If you are an experienced bowler looking for a new venue or if you have never bowled a wood in your life you are welcome to come and meet us on any of our club days which are usually held on Friday afternoons throughout the season,

starting at 2.00pm. A set of woods can usually be provided for beginners who have no equipment.

Falcon Bowling Club has recently elected some of its local members to its Management Committee:

Norman Rampton gives up the Secretaryship after 16 years and becomes Club President, with Chris Clouting from Upton St.Leonards taking over as Secretary. Royden Hales assumes the role of Fixtures Secretary, Jeff Russell from

Abbeylea takes over as Club Captain, and David Crispin becomes Captain for Retired Persons.

If you would like further information about the club or about learning to play bowls, contact the club president, Mr Norman Rampton, on 813928 or the club secretary, Mr Chris Clouting, on 01452.617874.

*Royden Hales
royden@rhales.entadsl.com*

Cricket's "Forceful weekend"

Last weekend Painswick Cricket Club took part in the national NatWest Cricket Force 2010 programme along with 37 other cricket clubs in Gloucestershire. An England and Wales Cricket Board initiative, NatWest Cricket Force aims to build and strengthen the grassroots game in the largest volunteer programme in British sport. Painswick chose the renovation of the Recreation Ground Youth Club Pavilion as their main project for the scheme. The initiative was a joint venture between Painswick Cricket Club and the PSALMS Youth Club in close collaboration with the Parish Council. PSALMS who lease the pavilion from the council will share the facility with the cricket club who will be playing again at the Recreation Ground after an absence of many years. It is planned that Painswick Junior Football Club will also use the pavilion. The cricket club's success means they are now able to field four elevens. The first and second elevens will continue to play at Broadham Fields with the junior sides using the Recreation Ground. For 2010 the cricket club has also established a women's team led by Bryony Overs, the former Gloucestershire Ladies player.

The clubs spent the two days over last weekend with their members, supporters, friends and families helping to restore the building. Cricket club Chairman Steve Pegram and PSALMS leader Andy Harding were delighted with the turn-out and wished to thank everyone for their



support. Particular thanks were expressed to Karen Goddard and her team who provided the refreshments. Thanks also to George Hodder from the Parish Council for his support. Funding for the work is being provided by the cricket club through various fundraising activities. Such was the importance of the event that the English Cricket

Board arranged for Gloucestershire County Cricket Club professional players Chris Taylor and Dave Payne to attend and help raise the profile of the occasion as well as giving a helping hand with the work. Our photo shows the two players with some of the renovation team.

Steve Pegram told the Beacon that there was no doubt that even before the new season started the weekend would be the biggest of the club's year. He said, "It's our chance to put something back into this beautiful village and show our commitment to the local area". He went on to say that he was especially pleased by the involvement of the youth club. "Young players represent our future and we hope to recruit more of them to come and play with us for years to come". It's generally agreed that the club which was established more than 130 years ago is experiencing its most successful period in that time.

AN INDEPENDENT,
FAMILY RUN BUSINESS

MICHAEL GAMBLE
FUNERAL DIRECTORS LTD
A CARING AND PERSONAL
SERVICE DAY AND NIGHT
PRIVATE CHAPEL OF REST


4 LONDON RD STROUD GL5 2BP
01453 790900
A PAINSWICK BASED FAMILY BUSINESS
SERVING OUR LOCAL COMMUNITY

Horne & Kilmister Ltd

General builders & stonemasons

'The complete building service'

- Extensions, renovations & newbuild
- Garages
- Roofing
- Hard landscaping



Tel: 01452 812760 or 01452 814416
Fax: 01452 814416

COLIN NASH
CONTRACTOR

Fencing - Hedgecutting - Topping etc
- Paddock cleaning

with tractor or quadbike

Telephone 01452-813104
Mobile 07788 912546

Holcombe Farm
Painswick
GL6 6RG

Painswick Tennis Academy

Painswick Tennis Academy will be again holding its popular tennis camps over the Easter break. The Tuesdays, 6th and 13th April, will be all day camps for 8-16 year olds, open to all standards with coaching through fun drills and competition. £20 for members, £25 for non-members. Wednesdays, 7th and 14th April, will be workshops for 9-16 year olds concentrating on specific skills. Children will be grouped according to ability and can attend for the whole or half day sessions. £25 for members, £28 for non-members for the full day, £15/£18 for the half day. Thursday afternoons 2.00-4.00pm, 8th and 15th April, will be mini tennis camps for the 5-9 year olds. These sessions will focus on agility, balance, coordination and speed as well as the all important technical work essential to develop at this age to maximise tennis playing potential.

For booking forms, more information or details on the specific workshops, please contact Lorraine Ristic on 07775.606399.

Rugby

Painswick first fifteen's successful season has continued during March with a closely fought victory over Old Cryptians. The game's outcome hinged on Old Cryptians' conversion attempt in the final moments of the game. The kick was unsuccessful and Painswick won the game by a single point. There had been disappointment earlier in the month when the cherry and whites lost at home to Brockworth. Victory for the Broadham side would have enabled them to strengthen their position at the top of the Gloucestershire Division 1 table where they are currently in second place.

League results

Sat 6th March. Painswick 1st XV 13 Brockworth 1st XV 15.
Sat 20th March. Old Cryptians 1st XV 17 Painswick 1st XV 18.

Table Tennis at the Painswick Centre

Our first season ended on Wednesday 31st March, owing to other demands on the Centre's Main Hall during April. We will start again in September and further details will appear in the Beacon in the summer.

We would like to thank all our new members and friends for their support during the season, particularly those friends who have lent or repaired tables.

David Linsell 814262

Passion Play

It was a privilege to have been present in St Mary's Church last Friday to experience the "Road to Calvary" Passion Play performed by the Society of St Vincent de Paul drama group from Clydach in South Wales.



The group perform the play twice a week during Lent. The dedication of the 25 cast and ten back stage crew is quite exceptional. The music was breathtaking particularly during the scene changes which were carried out in total darkness. We are taken back to Jerusalem in 33AD where the story of Christ's passion and death are re-enacted. The atmosphere in the Parish Church was electric throughout the performance. There were a number of especially moving moments, none more so than Christ's arrival by himself to greet his disciples for the Last Supper. The scene during which Christ dies on the Cross will remain long in the memory. Thunder, flashes of lightning, and sounds of wind and rain filled the church. With the music reaching a deafening crescendo, a light is directed to the now empty Cross draped with the shroud. The scene brought the play to its conclusion.

The Vicar thanked the cast for their presentation which he said would long be remembered.

Those who attended the performance would have much to talk about, not least the disappointment they felt for those who had been unable to come to the play and had missed such a moving and exceptional event.

The Churches Together Around Painswick committee wish to thank all those who came and helped make the evening so memorable. All of the proceeds from the play go to the St Vincent de Paul Society for their work with the underprivileged in the Swansea area.

Painswick Women's Fellowship

The Coffee Morning held in the Town Hall on Saturday 21st March raised £273.50 for the Alzheimer's Society.

Thankyou to all who attended, helped or gave donations.

Gill Gyde

Catholic Church Easter Sunday

Mass on Easter Sunday in the Church of Our Lady & St Therese, Friday Street will be at 9.00am.

Physiotherapy & Sports Injury Clinic

AT
Painswick
01452 810211
&
Stroud
01453 755948
www.physiofive.co.uk

Doctors or Self Referrals Welcome

LAWNMOWERS

- SERVICED
- SHARPENED
- REPAIRED

ALSO:- RIDE-ON MOWERS, CHAIN-SAWS, ROTAVATORS, STRIMMERS, HEDGE-TRIMMERS ETC.
FREE COLLECTION AND DELIVERY

CHELTENHAM MOWER SERVICES

01452 616169
Unit B3, Nexus, Hurricane Road
Gloucester Business Park, Gloucester GL3 4AG
Visit and Buy On-Line at
www.mowers-online.co.uk

Montgomery Lettings & Management

01453 756100

Jennifer Price

... 'Jen' to her many friends, died at home at Edge on 22nd January after a courageous 15-year fight against cancer. Some 250 guests gathered in the Star Suite at Gloucester Rugby Club's Kingsholm Stadium on Saturday, 20th February, for a celebration of her life. Jen had been a keen supporter, with the rest of her family.

During the speeches, three of Mrs Price's former midwifery colleagues talked about their training at Gloucestershire Royal Hospital. Shortly after qualifying, Jen had made her first home delivery. She had been greeted by the grandmother remarking that she would get the sherry out, only to be disappointed when a small dog called 'Sherry' emerged from under the bed! Mrs Price had worked for many years on Gloucestershire Royal's Special Care Baby Unit, as a staff nurse and then as Sister.



Mrs Price had also been a governor for St. James's Primary School in Gloucester. Wendy Kearsley, a fellow governor, described how Jen had found time in her busy life to help with the Reception Class and cookery classes. She had made a huge contribution and the school had planted a willow grove in the grounds in her memory.

Professor Hugh Barr, a close friend at Edge and one of the world's leading oncologists, talked about Jen's long fight against retroperitoneal liposarcoma - a rare form of cancer which normally kills within ten years. Jen had survived fourteen major operations and had been greatly admired by her medical, surgical and nursing teams for her courage, endurance, humour and serenity. Her legacy would be the experience she had helped provide in the treatment of her condition.

Mike Adlam, another close friend and neighbour, talked about her passion for long-distance running. Jen's superb fitness had helped her survive all the operations she had endured. She had been a proud member of Stroud Athletic Club, taking part in the Great North Run, the Gloucester 20 and Stroud Half-Marathon. She had also completed the London Marathon, which she ran for the first time last year in the remarkable time of just over five hours.

The Reverend Elizabeth Ward, Curate at Edge Church, described Jen Price as having been "one of our blessings", recalling some very special times taking part with Jen and other friends in local Moonlight Walks raising funds for breast cancer. Jen was never fazed by life's setbacks, always smiling, always generous and a caring friend to all who knew her.

Finally, Jen's husband, Malcolm, recalled how Jen had cared lovingly for Emily, their daughter and Matt, Steve and Becky, her three step-children. Life with her had been "so much fun". He also mentioned the tribute broadcast at the game the week before between Gloucester and Harlequins, which the former had won convincingly. In closing, he offered heartfelt thanks for the support received from all their many friends and especially to Jen's surgical, oncology and palliative care nursing teams at Gloucester Royal, Cheltenham General and the Cotswold Care Hospice.

Donations to support the Cotswold Care Hospice would be much appreciated at: <http://www.justgiving.com/jenprice>

Michael Buckland-Smith

BEACO-DOKU

Derived from Sudoku, Beaco-doku replaces

the numbers with letters.

	N			I	P
		R			
	S		G		
				P	
	R			S	
		N		G	

Last month we used the letters from **F-A-L-C-O-N** and hope you completed the Doku.

Since it is almost upon us **S-P-R-I-N-G** comes to mind

F	S	N	C	L	O
O	L	C	N	A	F
A	N	O	F	C	L
C	F	L	A	O	N
L	C	F	O	N	A
N	O	A	L	F	C

so see if you can fill the blank squares in the grid above so that each column, each row and each block of six squares contains each of those six letters; but without repetition.

Painswick Valley Radio

There have been four one-hour broadcasts by Stroud FM specially for residents of the Painswick Valley area – did you miss them? They have covered essential subjects like the gas-main replacement that is already leading to closure of some roads, and there will be more updates on this subject. The programmes have also included interviews with our own postmistress, Karen Judd, with the new landlord of the Royal Oak, with the nurseryman at the Rococo Gardens and Martin Slinger, vice-chair of the Parish Council about allotments, as well as news, a listing of the week's forthcoming events and, of course, music, as relevant as the local team can make it.



Stroud FM 107.9

The team is now putting together a continuing programme of news and features for the community – and by the community, too. They have enough material and ideas for two or three more broadcasts, but would dearly like to hear from local residents about news or future events or local people or, indeed, anything that YOU would like to hear on 107.9 FM. The next one-hour broadcast will be at noon on Wednesday 31st March, and we'll keep you informed of future transmissions.

We've heard that some residents in the north of our village cannot receive Stroud FM on 207.9. They can, of course, listen on Internet radio with no problem. And there are plans (expensive ones) to reposition the transmission aerial in Stroud so that everyone in Painswick (and all around) will be able to hear the Painswick Valley Show loud and clear. But funding comes first.

George Krasker



Pressed 2 Perfection

The Premier Ironing Service

- ✓ Reliable and accommodating
- ✓ Free pick up & delivery
- ✓ Only £9.00 an hour and some prices per item

Viki: 07976 400139

Call in the perfect solution!



TEL 01453 766312
MOB 07949792501
www.pccomputerrepairs.co.uk

For all your computer needs
 Local friendly service
 No call out charge
 New systems, upgrades, memory
 harddrives, broadband installations
 problem solving, virus & spyware removal
 System backup & system setups
 Tutoring available for the novice user

General Building Work
Kitchens / Bathrooms
Extensions / Garages
Barn conversions
New Build
Renovations Etc.

A Member of
The Guild of Master Craftsmen

Richard Twinning & Partner

General Builders
 With over 20 year's experience

Tel: 01452 812086
 Mobile: 07899 791659
 Fax: 01452 810785

Natural Stone Work
Hard landscapes
Dry stone walling
Patios and Pointing

Open Gardens



This year we are delighted to be opening five or six, including at least one new one, beautiful Cotswold gardens in Painswick in aid of the British Red Cross on Sunday 23rd May between 2.00 and 6.00pm. Parking is available free of charge at Broadham Field Rugby Club Car Park (by kind permission), and parking for those with mobility problems is possible at all gardens.

The gardens are located on Cotswold Mead, Kings Mill Lane, Stamages Lane and Stepping Stone Lane, so you can enjoy a lovely circular walk between them. If dry, parking is also available in 'Sheephouse' paddock, where teas will be served. Maps and details will be available from all gardens and car parking areas. The gardens show a wide variety of styles from 'formal' to 'cottage' with streamside settings and wonderful views.

Lindsay Gardiner 814282

The eyes have it

Very many thanks to all who supported the coffee morning in aid of the St John of Jerusalem Eye Hospital.

You have enabled a cheque for over £2000 to be sent to the hospital to continue its work in Jerusalem, the West Bank and Gaza.

Denise Magauran and Paula Errock 813711

A children's sponsored walk

To support World Vision's work in Lideta, Ethiopia, a children's sponsored walk has been arranged for the Bank Holiday Monday 3rd May leaving Cranham Village Hall at 11.00am and returning at approximately 3.30pm.

The wearing of strong shoes and bringing a picnic lunch is commended, and all children must be accompanied by an adult. There will be a nature trail and games en route.

Sponsor forms are available from Cranham School, as well as from us. Everyone is welcome.

Iris McCormick 812879 Olive Freeman 813587

Bingo

Our Bingo evening last week, on 26th, raised just under £600 for the Cobalt Appeal.

Our thanks to everybody please, for all their wonderful support.

June Gardiner and Sue Coates

Police report

Do you own a horse in the Stroud area? – How to prevent equine crime

Every year horses, ponies and equine equipment worth hundreds and thousands of pounds are stolen across the United Kingdom.

These animals and equipment have not only monetary value but also emotional and sentimental value to the owners that simply cannot be quantified.

'Specialist' thieves have been known to target stables and other rural premises where they know security might not be so tight and where it is less likely that someone will be around. They know that there is a strong possibility that what they steal cannot be personalised by the real owner.

As a response to this problem Gloucestershire Constabulary is asking for members of the Equine community to join their 'Horse watch' scheme which is a subsidiary of the "Rural Watch" concept that we operate.

Gloucestershire Horse Watch was put into place to prevent, reduce and detect equine related crime by working with horse owners.

It is run similar to 'Neighbourhood Watch' and we need you, the public, to help make this happen, to be vigilant and aware.

Stroud Police Safer Community Team (SCT) have the equipment to mark your equine tack free of charge by post coding the equipment and the use of ultra violet marking.

If you would like a 'Horse watch Area' Sign, assistance with tack marking or advice – and be part of 'Horse watch' and receive regular bulletins from Gloucestershire Constabulary and other Constabulary Horse watch schemes around the country please contact –

PCSO Colin Drewett BEM, Stroud Police Safer Community Team (SCT Rural) Co-coordinator on 08450.901234 and leave a message

or email colin.drewett@gloucestershire.police.uk



Beacon subscribers		
as at 21st March	2010 - 2011	This date last year
New or renewed after lapsing	38	28
Renewed from last year	325	314
Total including postal	363	342

With thanks from all on the Beacon committee for such a prompt response to the invitation to subscribe for 2010-11. We are closely watching what happens in April.

Whatever your care needs...

We can help

Richmond Painswick is a small, intimate, 24-ensuite-bedroom Nursing Home providing 24-hour care.

- Long- and short-term stays
- Respite care
- Convalescent care
- Short breaks

Fantastic Facilities – Wellness Spa, Pool and Gym, Rooftop restaurant, Library, I.T suite and more.



For more information call 01452 813902 or visit www.richmond-villages.com

Marathon Man

Whiteshill Scout Group is pleased to announce that their new Group Scout Leader, Michael Stevenson from Edge is to run both the Virgin London Marathon and the Edinburgh Marathon this April and May, in aid of the Whiteshill Scout Group (registered charity 275049).

The success of the group means that we are planning to open a Scout Troop at the HQ in Whiteshill in September this year and as such we need to gain funds to provide the equipment required for future adventurous activities for this age group. As we are growing so rapidly we are also looking for future beaver and cub leaders and helpers. For further information or to make a donation please contact me.

Michael Stevenson on 07977.295275

or at michaels@aasvets.co.uk



Tired PC

Poor Performance Does it need fixing? Call IDZ for advice and support.

All hardware and software repair, virus removal, upgrades and new installations. Broad experience, home, office, etc.

Local, friendly service (01452) 812733



I've mentioned in past articles that I like to keep you up to date on new information I've found out through training I've had, or events I've attended. Well, last month we had the pleasure of being spoken to by the local Red Cross, based in Quedegeley and the "new" news which might interest you, is that now as well as providing a variety of medical equipment for short term loan (you may have a relative coming for a holiday, or you might need some equipment after a hospital stay) they will pick up unwanted medical equipment and can make repairs. I've had quite a few calls over the last 3 years asking where to donate items such as commodes or raised loo seats and sadly until recently there has been nowhere to take them. Now the Red Cross has the necessary sanitary facilities to be able to collect and recycle such equipment. So, to the gentleman in Edge who rang me a few months ago; if you still have that raised toilet seat you'd like to find a good home for it, please give me a call. If the Red Cross is unable to make repairs to the equipment they are given, they often donate it to an organization called "Remap" which makes custom-made equipment for people with disabilities. I've looked on their website and some of the ideas that they've made into practical aids, are brilliant.

In the course of the last few weeks I've met many lovely new friends and not surprisingly, some have increasing problems with their short term memory. I would imagine that this is a frightening experience for anyone and that fear can make people reluctant to go to their GP. If this rings a bell with you personally, or you have a neighbour, friend or member of the family who is obviously struggling, I ask you to do everything you can to encourage them to get help. There is help available for people with dementia and treatments which sometimes can lessen the symptoms. The earlier you can get advice, the better. Not all memory loss is necessary a sign of dementia; it can be due to tiredness, anxiety,



depression, and side effects of some medications. Being on your own doesn't help either, so why not call me about getting to clubs, or going somewhere like Ashwell Day Centre in Painswick, on a Wednesday. It costs the amazingly small sum of £5.00 for a day of company, conversation, laughter and lunch.

Last but by no means least, Age Concern and Gloucestershire Dance are working together to put on a free Fun Dance day on 30th April at the Pump Rooms, Cheltenham, aimed at 50+ age group. You can have a go at Salsa, Carnival, Ballroom and more. I think its sounds great and I'd be happy to take 4 people (I'll even bring you home!). Why make a fool of myself on my own, when I can do it in good company?

Thank you for all the calls last month, especially those about the digital switchover.

Please call me for any information, or to arrange a home visit on; 07776.245767

Useful Numbers;

The Red Cross; 01452.726666 - Remap; 01453.768000 - Alzheimer's Society; 01453.791830 - Age Concern; 01452 420929

Lou Kemp

Spud in a bucket

Deadly serious stuff this. We can exclusively report that the Horticultural Society is introducing a new Class in the vegetable section of this year's Show - to put it in hort-speak - it will be 'A single potato grown in a bucket'.

For those interested, and the very minimum of horticultural knowledge is required, soil or its equivalent growing medium is placed in a bucket and a spud of the main crop variety is plunged therein. The resultant bucket full of potatoes is taken to the show - entry fee 15p - and when the judge gets round to it, all will tipped out and the weight of the 'crop' measured, probably in kilotons or such.

Please telephone Philip (The Tatty) Berry on 813227 for details such as size of bucket, diameter of drainage holes, whether to plant facing north, and so on. He will confirm this is not a joke.

PROPERTY REPORT for March from Hamptons International

As I write this report it occurs to me that today is the first day of Spring and it appears to have arrived not with a crisp, bright morning but a dull and rainy one - at least now I feel we can put the snow and ice that has been such a part of 2010 to date behind us and look forward to daffodils and Easter eggs!

The Spring market has long been regarded as the busiest time of year for buying and selling houses and this year looks set to continue that pattern. February was a busy month with the healthy number of properties coming onto the market going some way towards stabilising the balance between buyers and sellers that has been out of kilter for some time now. With prices appearing to have stabilised, interest rates remaining low and lending easing a little, it seems that many serious buyers are now ready and willing to commit to purchases. This trend is being reflected across our network of Cotswold offices from Broadway to Bath and Cirencester to Cheltenham.

New instructions in Painswick include: Roseleigh, a 2 bedroom terraced house in excellent condition; and Gerrans, a spacious detached house with delightful views of the Valley. Further afield: in Sheepscombe, Sam Scotts, a handsome Cotswold

stone family house with stunning views and the delightful Rose Cottage, prime for refurbishment; Sunnyside in Stock End, a family house with self contained annexe; Long Acre, a spacious detached family home in grounds of over 1 acre; Old Barn House in Cranham, a modern 4 bedroom house in the heart of the village; East Barn in Brookthorpe, a characterful barn conversion; and Barnwood House in Whiteway, a substantial house situated in over 2 acres with an indoor swimming pool complex.

Sales agreed include Norway House in Sheepscombe, Recreation Cottage in Slad, Longridge Meend at Bulls Cross, Partridge House in Edge and 8 Brookhouse Mill in Painswick.

As a last word, I would like to mention that we have joined forces with The Croft Primary School's PTA to raise funds towards the refurbishment of the swimming pool and are offering to contribute £250 to this project for every instruction we receive in the Village before 25 May and that we sell during 2010 (T&Cs apply).

Guy Tabony Branch Manager



**THREE COTSWOLD OFFICES
& MAYFAIR LONDON**
PrimeLocation.com


New Street PAINSWICK
01452 814655
www.murraysestateagents.co.uk

HAMPTONS
INTERNATIONAL

A global network of over 85 offices - including 21 in London.

For all your property requirements call **Hamptons Painswick** on 01452 812354 or visit **www.hamptons.co.uk**

APRIL

Fri	2	Painswick Singers will perform works for Good Friday	St Mary's Church	7.30pm	
Sat	3	Theatre Club Outing to Cheltenham	Stamages Car Park	1.30pm	
Mon	5	Gas Works: Stage Three commence Short Mat Bowls - Mondays (contact 813627) Yoga (Mondays) contact Kim 812623	New Street Town Hall Sheepscombe Vill. Hall	10.30am 6.30 to 8.00pm & 8.15 to 9.45pm	
Tue	6	Dog Training Club (Tuesdays)	Christ Church Hall	9.30 to 12.00noon	
Wed	7	Yoga (Wednesdays) contact Kim 812623 No Table Tennis until September Bingo: Wednesdays – Tel. Ann, 813911/Liz, 813139 Parish Council: Planning/Plantation/Footpath Committees	Sheepscombe Vill. Hall Painswick Centre Painswick Centre	9.30 to 11.00am 7.30 to 10.00pm	
Thu	8	Yoga - All Abilities (Thursdays) Cotswold Room 812623 T'ai Chi: Thursdays - Contact 812344 Jolly Stompers Line Dancing: Beginners - Thursdays Experienced beginners - Thursdays Bird Club: "A Wandering Warden's Eye" - Andy Warren, Ecological Consultant	Town Hall Painswick Centre Town Hall Town Hall Town Hall Town Hall	7.00pm 9.30 to 11.00am 9.30am 12.00 to 1.00pm 12.30 to 1.30pm 7.30pm	
Fri	9	Country Market - Coffee available - Fridays	Town Hall	10.00am	
Sat	10	Painswick Music Society Concert: The Carducci Quartet	St Mary's Church	3.00pm	
Tue	13	Painswick Centre Trustees AGM: All local residents welcome (see p.11)	Cotswold Room, Painswick Centre	8.00pm	
Wed	14	Probus: Islam - Richard Long Horticultural Society: Box, Yew & Topiary - Roger Turner Fiddlers Elbow works explained (see p.5)	Shires Room, Falcon Town Hall Brockworth Comy. Ctr	10.00am 7.30pm 2.00 - 7.00pm	
Fri	16	Friday Club: The United Nations and You - Christopher Dickenson Allotment consultation ends (see p.4)	Town Hall	2.30pm 4.00pm	
Sat	17	Copy dateline for May Beacon			
Tue	20	Local History Society: Research Evening Wearable Art Parade - inspiration (see p.3)	Croft School Town Hall	7.30pm 7.00 - 9.00pm	
Wed	21	Parish Council Meeting	Town Hall	7.30pm	
Thu	22	Music Appreciation Group: Concert Outing to Colston Hall	Bristol	7.30pm	
Sat	24	Painswick Music Society Concert: The Talich Quartet	St Mary's Church	3.00pm	
Tue	27	Yew Trees W I: Bletchley Park - Kitty Smithies	Town Hall	7.30pm	
Wed	28	Probus AGM Bird Club Field Trip: Morning stroll with Gordon Avery around Frampton Ladies Shopping and Pamper Evening. Details tel: Jean on 812180 Painswick & District Conservation Society AGM	Shires Room, Falcon Vicarage Road, Frampton Painswick Golf Club Church Rooms Stamages Car Park	10.00am 10.30am 7.00 to 9.00pm 7.30pm 8.30am	
Thu	29	Horticultural Society outing to Montacute & East Lambrook Manor Garden Music Appreciation Group: Members Night	Cotswold Room, Painswick Centre	7.30pm	
Fri	30	Friday Club at Richmond: The Mitfords - Jonathon Moygne Gloucestershire Police Male Voice Choir: Concert. Doors and Bar open at 7.00pm (see p.7) Playgroup: Closing date registration for Sept. (see p.1)	Richmond, Painswick Painswick Centre	2.30pm 7.30pm	

MAY

Sat	1	May Issue of The Painswick Beacon published		
Mon	3	Family Sponsored Walk & Picnic - proceeds to Lideta, Ethiopia. Tel: Olive Freeman 813587 (see p.19)	Start Cranham Village Hall	11.00am
Wed	5	Parish Council: Annual Public Parish Meeting	Town Hall	7.00pm
Thu	6 and 7/8th	Painswick Players production 'Confusions'	Painswick Centre	7.30pm
Sat	8	Painswick Music Society Concert: Jayson Gillham, Piano	St Mary's Church	3.00pm
Sun	9	Bird Club Field Trip: The Dawn Chorus at Ebworth Centre - led by Rob Palmer.	Ebworth Centre SO900114	4.30am
Wed	12	Probus: Women in Wartime. Poems & Readings - Philippa Roberts Horticultural Society AGM & talk followed by refreshments	Shires Room, Falcon Town Hall	10.00am 7.30pm

Thu	13	Theatre Club Day Outing to Stratford	Stamages Car Park	10.00am
Fri	14	Friday Club: Stone Masonry - Art or Architecture? - Mark Hancock	Town Hall	2.30pm
Sat	15	Horticultural Society Outing to How Caple Court & supper at Miserden Vill Hall	Stamages Car Park	2.00pm
Tue	18	Local History Society: Annual Outing to Uley	Uley	6.00pm
Wed	19	Annual Parish Council Meeting	Town Hall	7.30pm
Sun	23	Teddy Bear Parachuting: Tel 812879 for information	St Mary's Churchyard	12.00 to 2.00pm
		Red Cross Open Gardens (<i>see p.19</i>)	Around Painswick	2.00 to 6.00pm
Mon	24	Bird Club Field Trip. Songsters at Coates with Martin Wright	Coates - Tarlton Rd near canal SO967003	9.45am
Tue	25	Yew Trees W I: The Barn Owl Centre - Vincent Jones	Town Hall	7.30pm
Wed	26	Probus: Stroud Brewery - Gregg Pilley	Shires Room, Falcon	10.00am
		Horticultural Society Outing to Hampton Court & Bryans Ground in Herefordshire	Stamages Car Park	9.00am
Fri	28	Friday Club: early summer outing - boat trip on River Severn		
JUNE				
Wed	2	Parish Council: Planning/Land & Buildings Committee	Town Hall	7.00pm
Wed	9	Probus: Life in the Abyss - Roger Jones	Shires Room, Falcon	10.00am
Fri	11	Friday Club: History through War Medals - Christopher Hill	Town Hall	2.30pm
Sun	13	Bird Club: Two day Residential Field Trip: Wildlife on the Gower Peninsula. Details tel: 813823/813094		
Tue	15	Local History Society: AGM	Croft School	7.30pm
Wed	16	Parish Council Meeting	Town Hall	7.30pm
Tue	22	Yew Trees W I: The Australian Outback - Bob Price	Town Hall	7.30pm
Wed	23	Probus: From One Language to Another - Tore Fauske	Shires Room, Falcon	10.00am
		Parish Council : Traffic Committee	Town Hall	7.00pm
Fri	25	Friday Club: Life in Stroud 100 Years Ago - Howard Beard	Town Hall	2.30pm
Sun	27	Croft School Summer Fete	Croft School	2.00 to 4.30pm
Wed	30	Horticultural Society Outing to Cottage Herbery Garden near Tenbury Wells	Stamages Car Park	1.00pm
JULY				
Fri	2	Friday Club: Tracing Mother - Gilly Padbury	Town Hall	2.30pm
Wed	7	Probus: The Severn Bore - Chris Witts	Shires Room, Falcon	10.00am
Sat	10	Painswick Companion Dog Show & Charity Day	Recreation Ground	From 10.30am
Thu	15	Horticultural Society Outing to the Laskett Garden - Herefordshire	Stamages Car Park	1.00pm
Fri	16	Friday Club: President's Meeting	Town Hall	2.30pm
Wed	21	Probus: Ladies' Summer Luncheon		
Tue	27	Yew Trees W I: Beyond the BBC - Roger Jones	Town Hall	7.30pm
Sat	31	Wearable Art Parade (<i>see p.3</i>)	Village centre	
AUGUST				
Thu	19	Horticultural Society Outing to Powis Castle	Stamages Car Park	8.30am
SEPTEMBER				
Sat	11	Horticultural Society Annual show	Painswick Centre	2.30 to 5.30pm
Tue	28	Yew Trees W I: Bees and Beekeeping - Roger Eldridge	Town Hall	7.30pm
OCTOBER				
Tue	12	Bird Club: Britain's Breeding Seabirds: Graham Wren APRS	Town Hall	7.30pm
Tue	26	Yew Trees W I: Demonstration of Enamelling - Jeff Ford	Town Hall	7.30pm
NOVEMBER				
Tue	9	Bird Club: Mysteries of Migration	Town Hall	7.30pm
Tue	23	Yew Trees W I: Hearing Dogs for Deaf People - Tracey Stevens. Followed by AGM	Town Hall	7.30pm
DECEMBER				
Tue	14	Yew Trees W I: Christmas Gathering	Town Hall	7.30pm
Mon	20	Carol singing - contact Iris McCormick 812879	around village	6.00pm



NEW APPLICATIONS

SHEEPEHOUSE, STEPPING STONE LANE. Barn for machinery, vehicle storage and animal feeds.
GREENHOUSE BARN, GREENHOUSE LANE. Erection of extension.
THE OLD STABLE, ST MARY'S STREET. Proposed internal and external alterations.
BEACON HOUSE, NEW STREET. Works to TCA 13.
THE NATIONAL TRUST, OLD EBWORTH CENTRE, THE CAMP. Erection of signage.
PAINSWICK HOUSE LODGE, GLOUCESTER ROAD. Internal and external alterations.
LULLINGWORTH, STROUD ROAD. Works to 1 ash tree and 21 red chestnut trees (TCA 13)
COURT COTTAGE, HALE LANE. Replacement shed.
BELL YARD, NEW STREET. Conversion of retail unit to additional residential accommodation.
CROFT SCHOOL, CHURCHILL WAY. Alterations to create new Main Entrance and Reception area with internal alterations to Offices and over-roofing of Children's Centre, Admin Offices and Main Entrance.

OLIVERS, CHELTENHAM ROAD. Construction of greenhouse
7 CANTON ACRE. Erection of detached dwelling.
WAYLAND, COTSWOLD MEAD. Erection of porch.
ROBIN'S NEST, THE RETREAT, THE CAMP, SHEEPSCOMBE. Retention of extension to the hut to form a replacement dwelling.
GOLDEN HEART, TIBBIWELL LANE. Replacement of doors and windows and internal alterations.

CONSENT

PYLL HOUSE, SHEEPSCOMBE. Erection of single storey extension.
PAINSWICK HOUSE, GLOUCESTER ROAD. Surgery to trees alongside Gloucester Road.

REFUSAL

LLOYDS TSB BANK, 3 BISLEY STREET. Change of use from A2 to A3 (Licensed Restaurant) and erection of extension to rear.
WASHWELL FARM, CHELTENHAM ROAD. Outline application for the erection of a dwelling.

Painswick's future clarification note

Our attention has been drawn to a phrase used in the report under this heading by Carol Maxwell on page 6 of the March issue which could be interpreted in two different ways. In the penultimate paragraph the last sentence read "If Painswick is strongly supportive of having such a convenience store, firmly endorsed by the Parish Council, there is known interest among the 'big boys' in this field, based on existing professional research, and the District Council would become supportively involved."

There was no intention to infer, as we are informed some have concluded, that the Parish Council was or is already supportive; in reality the subject had never been considered by the Council when the letter was written.

For absolute clarity, and with the benefit of hindsight (which is always a marvellous thing) the sentence might have benefited by the insertion of the words highlighted here; "If Painswick is strongly supportive of having such a convenience store, **and such a proposition were** firmly endorsed by the Parish Council, there is known interest"

Ed.

MINI-ADS

60 litre tropical fish tank complete with 3 fish, heater, magnetic cleaner, etc. only £40 to good home. Also SIMS 3 PC game as new for £12. Please call 813464 and ask for Freya.

Rock, Cornwall. Holiday bungalow to let. Sleeps 5. No pets. Weeks available in the school holidays. Telephone 01453.751702

Childminder service. I am currently training to be a registered Ofsted inspected Childminder in Cranham. If I can help you please contact me. Gina, on 812572 or georginagriffiths@ymail.com

Electric Floor polisher wanted preferably 3 brushes. Please Contact Libby Graesser 812304

Computer Chair. Green. Good condition. Free to good home. Tel: 812743

Wanted - single treadle spinning wheel. 814548

The Sharpening Service. Kitchen knives, garden tools and rotary mower blades. For free advice and quotations telephone Rupert Miles at Bisley on 01452.770788

Wanted - unfurnished accommodation, 2/3-bedroom, in the Painswick area from May. 813642

Aerobics and Fitness Pilates has come to Painswick! Aerobics 9.30-10.30 and Fitness Pilates 10.30-11.30 every Wednesday morning in the Painswick Centre. All abilities welcome. £5 per class. 07747.466807.

Video camcorder 8mm Canon, full working order. Spare cassettes. £20.00 Coopers ash can. Connects to your Hoover, sucks up ash from fireplace. Almost new. £18.00. 814783

Frame tent with separate zippered 6-bed compartment. Spacious living/cooking area. Free to organisation or interested parties. A donation to Cotswold Hospice would be appreciated. 813977

MINI-ADS - Free to subscribers.
For non-subscribers there is a flat charge of £5.00. For commercial/business mini-ads priority and space constraints apply.
Text maximum of 30 words + payment by cheque in advance, to 'The Painswick Beacon', to Dermot Cassidy, 1 Painswick Heights, Yokehouse Lane, GL6 7QS

It is nice to be important but it's more important to be nice.

Inside out
Cleaning services
**Professional Carpet,
Rug & Upholstery Cleaning**

Craig Lindsey

Tel/Fax: 01453 548152
Mobile: 07890 282535
email: carpetcleans@aol.com
www.carpetcleans.com

BUILDERS CLEAN . HARD FLOOR CLEANING
WINDOW CLEANING . DEEP CLEANS
FULLY INSURED

**PAINSWICK ACCOUNTING
& TAXATION SERVICES LTD**

**FOR ALL OF YOUR
ACCOUNTING AND
TAXATION NEEDS**

PLEASE CONTACT SHARLA DANDY
ON **01452 813533**
OR EMAIL sharla@paatsltd.co.uk

 VISIT OUR WEBSITE
www.paatsltd.co.uk
FOR MORE INFORMATION

The Personal Column

Rachel Taylor and Jenny Gaugain

Baby

Congratulations to AMY and CHRIS LEIVERS of Queensmead on the birth of their daughter Sophie at the end of February

Welcome

We would like to welcome ALISTAIR and KIM YOUNG to Brookhouse Mill Cottage, having moved to Painswick from the New Forest. Kim and Alistair have already received a warm welcome from their neighbours and look forward to integrating and supporting their new community.

also welcome to TED LANE who now lives at 24 Ashwell House,

and RON WYSE who has moved into 21 Ashwell House,

as has MARGARET MUSTO to number 6 Ashwell House,

and SALLY GOODMAN to Hambutts Barn in Edge Road.

Farewell

We say goodbye to KAREN BECKWELL who lived at Brookhouse Mill Cottage,

and PAULINE RADGE who has moved from Ashwell to the Wirral.

Get well soon

We wish a continuing recovery to

ANGELA CRITCHLEY who has had a very painful illness for many years, but is now much more comfortable after surgery to her leg;

and to KATH and IVOR DICKS and to FELICITY SHARWOOD SMITH who have been in Hospital recently.

Condolences

Our sincere sympathies to the friends and family of MARY HARRIS, BRIAN HUNT and JENNY MORRISON who died recently.

101st Birthday

Mrs SHEILA LOMAS of Blakewell Mead celebrates her 101st birthday on 7th April. Congratulations to an amazing lady!

100th Birthday

Congratulations to PHYLLISCATHCART of The Croft who reaches her 100th birthday on 13th April.

Diamond Wedding anniversary

Our best wishes to Marion and Peter Sadler, who celebrated this anniversary on Thursday, 1st April.



Personal messages

PAULINE RADGE from 30 Ashwell would like to say a very sad goodbye to neighbours and friends in Painswick. She sends her grateful thanks to the doctors and staff at the surgery for all their support during the last 2½ years.

A very special thanks to Eliza Hitchcock who has been a very supportive friend and neighbour. Pauline is moving to the Wirral to be near her family.

RACHEL TAYLOR and Family would like to thank all the kind people who wrote and supported us at the time of Len's death. It was good to have so many at his Thanksgiving Service on 16th March, and to meet the family afterwards.

NEXT ISSUE

Publication date

SATURDAY

1st MAY

Dateline for all copy

including Mini-Ads - Display advertising

Diary - Club news - etc using

E-mail or the Beacon post box

SATURDAY

17th APRIL

E-mail address

beacon@painswick.net

Photographs and advertising art work

preferably original

at 600dpi in JPEG

Hard copy preferably typed

Beacon post box - New Street

Web site

www.painswickbeacon.org.uk

All copy must include

Author, address

and contact telephone number

Beacon Committee

Co-ordinating Editor this month

Leslie Brotherton 813101

mr@lesliebrotherton.com

Personal Column

Rachel Taylor 813402

rachel212@btinternet.com

Jenny Gaugain 812599

f.gaugain@sky.com

Diary

Edwina Buttrey 812565

em-m.buttrey@virgin.net

Feature writers

Carol Maxwell 813387

Carolmaxwell@talktalk.net

Sport

Terry Parker 812191

terence5545@btinternet.com

Advertising

Dermot Cassidy 813737

Distribution

Celia Lougher 812624

celia@lloydstone.plus.com

Treasurer

Richard Aspinall 812379

rgrasp@tiscali.co.uk

Subscriptions

Shirley Clark 812378

shirclark@talktalk.net

Quiz

Charles Dorman 814548

chasdorm@googlemail.com

Directory

Carol Maxwell 813387

Carolmaxwell@talktalk.net

P. L. ALLARD 
www.allardbuilders.co.uk
Specialists in Period and Listed Property

- Renovations
- Refurbishment
- Cotswold Stone Tiling
- Roofing Services
- New Build
- Internal Work
- All Work Considered

01452 812840 / 07841 695705
p.allard@tiscali.co.uk
2 Gloucester Road, Painswick, Glos, GL6 6RA


THE ROYAL OAK INN
PAINSWICK, STROUD

**OPEN EVERY DAY
FROM 10.00 a.m.**

Tea – Coffee – Cream Teas
Snacks – Lunch – Dinner
Local Real Ales & Cider

Warm Welcome & Atmosphere

Dog and Child Friendly

To Book a Table for Lunch or Dinner
CALL: 01452 813129

Printed in Gloucester
for
The Painswick Beacon
by
www.inkylittlefingers.co.uk
01452 751900

