

The Painswick Beacon

Sine praeiudicio

Volume 34 Number 5

August 2011

Wearable Art – triumph

The “Glorious 10th” was one description of that date in July, the day when Painswick was transformed from a village following its habitual Sunday routine to a magical day of fun and entertainment for all. “The most amazing day”, “The most enjoyable in many years”, were other comments, and “A remarkable feat of organisation which must have involved many, many hours of enlightened and dedicated work over many months”. The Beacon can only echo these sentiments, however they were expressed; and share the wonder of how so many had not only created the experience for us all, but removed every trace of its existence before the sun had set.

Many times we heard people asking just who brought this about. It has to be said that none sought the limelight, but we find that there are names to be mentioned and here they are; not exhaustive, but the highly motivated prime movers were Chris Mercer who sowed the seed of the concept for 2010, and tells the Beacon that it is “Libby Graesser who really holds the chair at our meetings and keeps us under control. It was principally Libby and I, with latterly the help of Frances Day, Judie Hill, Tim Davies, Brian Nunez, Anne Haworth and Andy Lovell who got the first WAP show on last year”.

He tells us these have been augmented by Jo Weatherall, Penny Foster, Fi Stewart and latterly Becca Eccles, Susan Hawkey, Gerry Howie and Charlotte Roberts. As Chris says, “All these members bring to the group a wide range of individual skills, knowledge and also contacts, which have enabled the rapid growth of the event from its inaugural year to this. And more people are expected to join the committee soon”. He adds that these organisers “Were amazed and delighted by the phenomenal success of this year’s event”; so was everyone else!

Much publicity preceded this event and, lest it had not fully registered, a fly past by the Red Arrows at 0934 hours, slightly detouring while en route to Silverstone, wakened those still abed, and heralded the fine day to come. Trevor Radway caught the moment (shown here) as they flew to the north east - our intrepid cameraman being alert and ‘on station’, but wrongly briefed upon the few seconds slot to point the wrong way!

There was no way of accurately assessing the number of visitors who mixed with local residents that day, but multiple

thousands will suffice. With three stages busy throughout we were also treated to every inch of street for exhibition, all cars and even skips diligently removed by residents. Pedestrianised in the extreme!

The sun shone upon over 100 contestants from as far afield as London and Stroud in their wonderful creative costumes, the performers, the bands, instrumentalists, individual singers and vendors of food and other goods, art, craft, dance demonstrations, and in the Painswick Centre a market and a demonstration of body painting by Charles Fox of Covent Garden.

Keith Allen was principal compere again this year, in his own never-lost-for-a-word and humorous style; crucial to creation of much of the happiness pervading everything which was before us.

Chris Mercer again; “The Festival committee are incredibly grateful to all the sponsors, corporate friends, friends and helpers, who donated funds, services, time and enthusiasm, to make the day the success it became and without whom the event would not have been possible”.

This is a not-for-profit undertaking, and in the order of £1000 was divided between the two chosen charities Cobalt (previously called Cobalt Unit Appeal Fund) and Cotswold Care Hospice.

The WAP 2011 Souvenir Programme is still for sale, priced at £3, at The Chairman and Painswick Post Office, £1 of the sale price supporting these charities. The programme also includes various discount vouchers for local businesses. So, buying it is also a simple way to help support WAP and enable them to put on an even more exciting show next year. They invite you to get more involved by becoming a Friend, for as little as £20 per annum, with the benefit of being invited to any of their functions organised from time to time.

The date for next year’s extravaganza is

Sunday 15th July

so please make a note in your diaries.

A colourful day, to say the least, and we have attempted to capture at least some of the spectacle on our centre pages.

On other pages this month: local NHS services under scrutiny, car park charges, Catbrain quarry concerns, upkeep of manorial land, councillors to be identified, torchlight through Painswick, your say upon Welsh invasion, show dogs, more on t’ weeds, small business award localised, occasional HGV spotting, crime up, WAP tributes, art activities abound this month, allotments on horizon, swift screams, sporting achievements, over 30 cases for planning, Betty coping, Australia beckoned in 1844.

The meeting was attended by 14 members of the public and our County Councillor Joan Nash.

PLANNING

The Shetland Shop

The Chairman told the meeting that Stroud District Councillor Barbara Tait had confirmed that both senior planning and building control officers were visiting regularly to ensure the work complied with regulations.

Catbrain Quarry

There was extended discussion about the work carried by Meister Masonry Ltd at the quarry. The Parish Council has told both County and District Councils on several occasions that not just earth had been removed from the site but also, in their view, stone had been taken as well. Enforcement officers from both Councils have visited and currently the area to the side of the existing building is being investigated. The access gate to the site was permitted development and a way through for the Cotswold Way footpath had been created. Members wanted to meet at the site with enforcement officials as it appeared that excavation had taken place without an extraction licence and they also wished to clarify what constituted quarrying and what not.

Three Gables Dental Practice

Cllr Anne Burgess Watson found the advertising sign off-putting to drivers approaching from Cheltenham. Cllrs Jason Bullingham and Rob Lewis reiterated that the sign was outside the Conservation Area and as far as planning was concerned it was legal. After some banter about deciphering the sign, the meeting agreed that the Clerk would write to Highways for their view.

PARISH COUNCIL

Stamages Lane Car Park charges

A member of the public resident in Edge complained that the 300% rise in the cost of one hours parking was excessive. The District Council should charge a

nominal amount for the first hour so that local residents are encouraged to do their shopping in the village. Members were sympathetic to this view but did point out that apart from Nailsworth Painswick had the cheapest car parking in Stroud District. An attempt to ask traders to refund car parking charges was unsuccessful, Cllr Rob Lewis said. Cllr Ann Daniels proposed that the first half hour be charged at 10p and that this be made up by a higher charge for longer parkers. The meeting resolved to approach the District Council about a cheaper first hourly rate.

Wearable Art

The Chairman Cllr Terry Parker expressed the Parish Council's appreciation of the highly successful Wearable Art day and will write to the committee to thank them. Cllr Ann Daniels said that the car parking on the Recreation Ground had been particularly well organised with no rubbish to be seen the following day.

Allotments

The Chairman Cllr Terry Parker reported that at a meeting with Selina Blow she had agreed to allow the Parish Council access to the Mop Tree site for maintenance. She added that if parking became a problem, this permission would be withdrawn. Cllr Parker said Clattergrove residents still objected to the choice of the site for allotments and he read out an email from them which also said their solicitor would be in touch with the Parish Council. The meeting agreed to setup a sub-committee consisting of Cllrs Terry Parker, Martin Slinger, Ela Pathak-San and Caroline White to create allotments at the Mop Tree site. A Certificate for Lawful Use has already been applied for.

County Councillor's report

Cllr Joan Nash reported:
The residual waste project is now well advanced with selection of the final bidder being made in November. A further public consultation exhibition will take place in September. This project will deal with a significant part of Gloucestershire's residual waste currently going to landfill and will generate enough energy to power

28,000 homes.

Road Repairs. 55 roads have been treated with a preventative surface dressing to help prolong their lives. A further 28 will be treated in July. The Government has given Gloucestershire a further £3.5 million for road repairs.

Community Plans. As the Painswick library was not closed as part of the Library Review, it is in a particularly strong position when Cabinet decides on business plans put forward for community projects. A decision was expected in July but this has been delayed by the Judicial Review.

Safe at Home scheme. This will help vulnerable people referred by Social Services to make small improvements to their homes to reduce accidents. More information from www.yourcircl.orh.uk or 0800 0323 139.

Road safety – CRASH cards. This card should be carried by motorcyclists inside the right side of the helmets with a green dot on the outside to indicate the card is being carried. In an accident paramedics can find the card with personal details of the motorcyclist. Information from www.roadsafety-gloucestershire.org.uk/motorcycling.

Big Community Offer

Chairman Terry Parker confirmed County Cllr Joan Nash's statement that the Painswick bid was different from other community projects and the decision was awaited.

Manorial Land

Cllr Martin Slinger outlined the costs of grass cutting and some waste removal on manorial land as follows: Sheepscombe £711, Slad £433, Edge £325, Walkers car park £33, the Pound £40 and emptying dog faeces bins and removing fly tipping £660 totalling £2202. This includes the contractors used at Sheepscombe and Slad. These figures do not include cost of equipment or fuel. Up to 2007 the Manorship contributed £440 per year. Payments stopped following the reorganisation of the Manorships trusts. The Parish Council will ask for a payment of arrears and ongoing contributions at a



- **Feeling the SQUEEZE?**
Get ready for Summer!
- **Lose weight and feel great!**
Ask about our new FREE service!

THE PAINSWICK PHARMACY
NEW STREET TEL: 01452 812263

JK's Restaurant
@
Painswick Golf Club
for
**Functions, meals
and
events**
Golf membership available
Supporter of local suppliers
Open to non members
Tel: 01452 812180

meeting to be held with Selina Blow on the 17th August. Whilst there is no obligation on either the Manorship or the Parish Council to maintain common land, the benefit is clear. Cllr Jason Bullingham said that the community was not aware of this situation. The discussion closed with a brief attempt to define the differences between manorial land and common land. The Parish Council would welcome accurate information on this score.

Olympic Torch

Cllr Terry Parker reported that the Olympic Torch Committee had been asked to include Painswick on the route. Kate Foster, our snowboard champion, has been nominated as our torch bearer. The route will be announced in November.

ID cards for Parish Councillors

The meeting supported a resolution to the National Association of Local Councils

that it would be useful for Cllrs to carry an ID card when on official business and that the card to be uniform for all Parish and Town Councillors.

Traffic

Vicarage Street: Cllr Ann Burgess-Watson reported that the Parish Council had been advised that the residents of Vicarage Street had held a meeting to discuss traffic arrangements and were content with the current arrangements.

20 mph roundels: The meeting discussed the placing of further roundels at various locations. The draft proposal is available for inspection at the Town Hall. It was agreed that speed analysis checks would be carried out before recommending locations.

VAS (Vehicle Activated Sign): John Kay of Highways had advised that VASs were not permitted in 20 mph zones and at £6000 each were very expensive though

a portable VAS costing £1500 is available. Quotations and specifications have been received and are being considered..

Slad meeting: The Clerk will arrange for John Kay to meet Slad Councillors to discuss ongoing traffic problems through Slad.

Traffic Catbrain quarry: When the earth was being removed there were up to 30 vehicle movements per day. This has now dropped dramatically.

Heavy Goods Vehicles through Painswick

The meeting asked the Beacon if its readers would report all heavy goods vehicles they see travelling through the village and which they consider are not delivering locally. The Registration Number, time and date as well as, if possible, the company name should be noted. Report sightings by phoning Gloucestershire Highways on 08000 514514.

**Redesigning Gloucestershire’s Care Services
12th September deadline**

Gloucestershire County Council is aiming to completely redesign the path people follow when using self directed support, from the first contact people have with them (either themselves or through health services) through to finishing using out services. They call this the 'Customer Journey'.

Their web site states: "We want to find out what matters to our customers so that we can design a new system based on those ideas. This invitation is for anyone with an interest in the 'Customer Journey'.

We welcome contributions from:

- Individuals who need support at the moment, or may do in the future
- Individuals who have had support in the past
- Families and carers of people who have used, currently use, or might use care services

- Voluntary sector organisations
- Professional bodies
- Health and social care services
- Other partners who form circles of support for service users and their carers.

We are particularly concerned to ensure we make the best use of our available resources as our budgets come under increasing pressure. This is why we want to focus on what people regard as priorities, to improve outcomes for our service users."


For more information, please contact Clare Hockett: clare.hockett@gloucestershire.gov.uk or telephone on 01452.427036.

That said, their 'Call for Evidence' closes at 5.00pm on 12th September, so there is no time for delay.

**Richmond Painswick Wellness Spa –
looking after Mind, Body and Soul**

A state-of-the-art complex with gymnasium,
pool, Jacuzzi, sauna and steam room

Wide variety of Health and Beauty treatments
Spa day packages available | Open to non-members



Call the Wellness Spa team on 01452 810211 to book your appointment

**NEWSPAPER &
MAGAZINE DELIVERIES**

Six day week deliveries Monday to Saturday
Voucher schemes accepted
Approximate delivery time 5.00am - 7.45am
More accurate delivery times are available upon request
For more information or to place any order please contact



Andy Christmas
07719.998471 07765.232122 07775.199171

PAUL A MORRIS
GENERAL BUILDER LTD
EXTENSION: RENOVATION: STONEMWORK
KITCHENS: BATHROOMS
PATIOS: DRY-STONE WALLING
PLUMBING: ELECTRICAL WORK:
PLASTERING

paulmorrisbuildersltd@gmail.com
01452 814524 or 07818 087375

Federation of Master Builders
Over 20 years experience



DAVID ARCHARD
in association with
Philip Ford & Son
Funeral Directors
Part of Dignity plc. A British Company
Private Chapels of Rest
24 hour Personal Service
Dirleton House
Cainscross Road Stroud
01452 812103 or 01453 763592

JOE REED 
General Plumbing
And Minor Domestic Electrical Work
07967 742601
City & Guilds and Part 'P' Registered
For more details please visit:
www.joereed.co.uk




Health and digestion

Local acupuncturist Kate Tenney is inviting anyone with digestive complaints to attend a free talk at the Painswick Centre on Thursday 25th August at 7.30pm. The talk, which coincides with Gut Week, will focus on easing digestive complaints through diet & lifestyle. It will include a mixture of western and eastern approaches based on the Love Your Gut campaign and Kate's training in Chinese Nutrition.

There will be information, advice and recipes available to take away and Kate will be offering all attendees a mini Chinese nutritional diagnosis and nutrition plan to help them manage their symptoms.

Spaces are limited so please let Kate know if you are planning to attend and do pass the information on to anyone who might benefit.

Kate Tenney BA (Hons) Lic Ac MBAC
01452.812791 kate@twelverivers.co.uk

The tap is turned off

After ten years of Saturday morning classes the Painswick Tappers sadly disbanded last month ending, with a celebration lunch at the Bistro.



This delightful form of dance took off in September 2001 when Painswick Players decided to put on the play "Stepping Out" by Richard Harris the following year. The play is about a hilarious weekly tap class with several ladies and just one

All aboard

On 30th June 38 members set out for Bath by coach.

They were soon tucking into a cream tea on board the Avon Valley Steam Railway and this was followed by a boat trip on the River Avon



Friday Club

aboard the Silver Salmon. The boat took us right up against Poultney Bridge weir so for a few minutes the boat was surrounded by falling water. An amazing sight.

The weather was sunny and dry and everyone enjoyed their relaxing day out thanks to Ann Williams who

organised it.

Next they are looking forward to the Malvern Autumn Show on 24th September.

Jane Robinson



man. In order to do this production the Players had to learn to tap dance, so Sara Harwood from Cheltenham was drafted in to choreograph the show and train the actors to dance, assisted by Kate Mead. The play was a roaring success with virtually full houses every night. Sara did a wonderful job training the cast, many of whom had not done tap before.

Everyone was so keen on the lessons that the weekly class continued. In fact, at one time there were two classes each week for beginners and improvers. Several shows followed, including a pantomime specially written by Jack Burgess to include tap dancing, tap numbers in the Players' Edwardian Music Hall and two versions of the song Hello Dolly, one a comedy number and one in top hat and tails in Cheltenham at Sara's school show.

We were very fortunate to find Sara, who teaches mainly in Leckhampton and choreographs for the Cheltenham Operatic and Dramatic Society's major musicals at the Everyman Theatre. She has been a wonderful teacher and the lessons have been great fun, combined with marvellous exercise.

We want to say a very big thank you to Sara for such excellent teaching and we were so very fortunate to find such a special and talented person to teach us all to dance.

Liz Fisher

Centenary Year



GODDARD'S GARAGE

Cheltenham Road Painswick

- Full servicing & repair facilities
- MOT preparation & repairs
- Private hire - local or long distance
- Petrol/ Diesel/ Tyres/ Exhausts
- Paraffin/ Coal/ Calor Gas
- Car valeting
- Air conditioning

Centenary Year

Personal attention for your car

01452 812240

Tree Surgery

Sapling to Veteran Trees
Fruit Tree Pruning : Planting
Stump Grinding : Seasoned Firewood
Fully Insured : 25 years experience



Clare Overhill & John Rhodes

Painswick 812709

Landcare Services

6 Pullens Road Painswick

LAWNMOWERS

- SERVICED
- SHARPENED
- REPAIRED

ALSO:- RIDE-ON MOWERS, CHAINSAWS, ROTAVATORS, STRIMMERS, HEDGE-TRIMMERS ETC.
FREE COLLECTION AND DELIVERY

CHELTENHAM MOWER SERVICES

01452 616169

Unit B3, Nexus, Hurricane Road
Gloucester Business Park, Gloucester GL3 4AG
Visit and Buy On-Line at
www.mowers-online.co.uk

Duets

Painswick Players continue to positively seek out challenges to their ability to adapt and innovate, and in presenting Peter Quilter's 'Duets' in the Church Rooms last month defined that laudable trend. The central theme of the quartet of plays is the manner in which couples relate in four circumstances; the latest in blind dates, the 'gay' older wealthy man comprehending the aspirations of his vivacious and much younger lady assistant, holidaying in Spain prior to conclusion of their divorce, and a bride-to-be and



her unmarried brother whose role is to overwhelm her phobia about the final step to the altar.

In many productions just one pair of actors play all four situations, but Director Steve Friar was right to use eight – not least because a freshness is desirably brought to each play, and the roles contrast dramatically. Actors Dave Kilmister with Jean Burgess (pictured), Swithin Fry/Sarah Kilmister, Richard Tate/Maggie Thomas, and Kevin Parker/Susanna Davis (see below) were fundamentally well matched and,

without exception, captured the audience's attention with their characterisations. Such seemed disconcertingly realistic at times, the mind being focused entirely upon the words and body language and heightened by limiting the set to one bland two-seater, a picture frame, and a tallboy placed upon the apron stage. Quilter's humour was gently but dexterously exploited, with instant audience response throughout; this testing acting ability to the limit when conveying jocularly scripted by others.

Altogether a delightful evening, a successful 'run', with full houses each night, and evidence of versatility by all whether front of stage or behind the scenes.

One cannot help but hesitate when exemplary performances were given by all, and yet being urged to respond to the question 'Was there any one actor whose contribution had a fresh distinction of its own?' To this scribe there was just such in Sarah Kilmister, whose solo singing prior to performances including her own received unreserved applause – a young lady oozing personality who will go far.



LWB

Field Club

(We're sorry not to have been able, for several reasons, to include a report this month. We hope to rectify this next month. Ed)

There are people who have money, and there are people who are rich.

Carol Maxwell

Horne & Kilmister Ltd

General builders & stonemasons

'The complete building service'

- Extensions, renovations & newbuild
- Garages
- Roofing
- Hard landscaping

Tel: 01452 812760 or 01452 814416
Fax: 01452 814416

Call today to arrange a visit.

Resthaven
at Pitchcombe

Modern nursing home overlooking the beautiful Painswick valley. Offering long-term residential care & daily / weekly respite stays.

Resthaven, Pitchcombe, Stroud, Gloucestershire GL6 6LS
Tel. 01452 812682
www.resthavenpitchcombe.co.uk

Yet more Painswick transportees ...

Since the article about Henry Butt, one of Painswick's many 19th century convict transportees, appeared a couple of months ago, information about others has been coming to the fore.

Graham Gyde writes to say that his great great grandparents' eldest son, Samuel, was found guilty of larceny at the County Assizes in Gloucester on 8th July, 1839. He was 16 and sentenced to be whipped and to one week's imprisonment. Unfortunately, he appears not to have learned his lesson because on 20th January, 1844, at the County Quarter Sessions in Gloucester he was found guilty again, this time for stealing five pigs from his grandfather, also named Samuel, in Sheepscombe. (Henry Butt's victim was also a Sheepscombe man - curious that our Painswick felons should commit their crimes against Sheepscombe residents!) This time the sentence was transportation to Tasmania for seven years with a fifteen months probation period on arrival.

Samuel sailed from Portsmouth on 23rd March, 1844, one of 250 convicts on board the 'London', the journey lasting 108 days. After his seven years he was not allowed to return – very few in fact did. He married Eliza Rowney in 1853 in Launceston, their daughter, Sarah Jane, having been born the previous year, and later the family moved to Victoria, Australia.

Transportation as a punishment, usually for recidivists and usually for crimes involving theft or stealing, stopped in the 1860s partly because Australia was no longer willing to take Britain's felons. Several Painswick men were transported and later offenders were committed to quite long prison sentences. Persistent petty crime, sometimes not so petty, was certainly a very regular feature of Painswick life in the 18th and 19th centuries.

LEIGH YOUNG

Established solicitors in Stroud offer a caring bespoke service:

- Wills, Trusts and Probate
- Family / Matrimonial
- Property / Conveyancing
- Litigation / Mediation
- Company / Commercial
- Employment / Compromise

The Old Court Offices, Beeches Green
Stroud, GL5 4BJ

Tel: 01453 762114

contact@effectivesolicitors.co.uk
www.leighyoung.co.uk

Police report



Information passed to the Beacon up to 18th July includes the following, with Incident numbers at the end of each.

- Between 6pm on June 21 and noon on June 24 two pedal cycles, which were locked together, were stolen from the garden of a home in Kingsmill Lane. 353
- Between 2.30pm and 2.45pm on July 9 offender/s entered a home in Tibbiwell Lane through an open front door. A handbag was stolen from inside. - 291

Criminals are quick to exploit any slackening of security such as windows and doors being left open on a hot summer's day and the majority of burglaries and thefts can be avoided by following very simple crime prevention advice.

Crime Reduction Officer for the county, Paul Francis, said: "Now we're finally due a bit of sunshine we do urge people to make sure doors and windows are closed and locked when the room or building is empty. It sounds obvious but it's incredible how many people fail to follow this simple advice."

Police also advise people take the following measures:

- Don't leave valuables on display where they can easily be seen through a window

- Photograph items of jewellery, antiques and other items that may be difficult to describe.
- Always back up home computer records on disc and store them safely in case the computer is stolen.
- Mark valuable items with an indelible marker with your post code or better still use a forensic marking system and display the signs provided with the kit
- Consider purchasing a safe for storing valuables
- Don't keep large amounts of cash at home

The local policing team also encouraged people to report any suspicious activity. Mr Francis continued: "If you see something that looks or feels suspicious or out of the ordinary then please do make sure you report it," he said.

"We would always much rather get calls that turn out to be something legitimate than to miss an opportunity to prevent a crime or catch an offender.

- Between 6pm on July 11 and 11.30am on July 12 the rear windscreen of a white Peugeot parked on Pullens Road was smashed. 179
- A quantity of lead sheeting was stolen from the porch roof of a church on the Stroud Road between 6pm on July 13 and 9am on July 14. Officers would like to hear from anyone who witnessed any suspicious activity in the area. 107

Gloucestershire Local Involvement Network



What is a LINK?

Gloucestershire LINK is an independent, voluntary body made up of individuals, community groups and organisations across Gloucestershire. The LINK works with these groups for the purpose of influencing, improving or changing the way local health and social care services are planned and delivered.

Working locally

The LINK has been working with Richmond Painswick recently on a piece of work relating to access to podiatry and dentistry in care homes and will continue to work with them as part of our 2011/2012 work plan

Find out more

We are holding a public event at Richmond Village, in the autumn. It's an opportunity to hear more about our work, talk to members about the sort of activities they get involved in (over a light buffet), as well as tell us what local health and social care services are working well and what aren't. Following the event, attendees will be invited to take a look around the facility. For more details visit www.gloslink.org.uk or telephone Christine Welsh on 01452.528491 or by email, christinew@gccc.org.uk

Thursday 29th September

The Auditorium at Richmond Village - 12 noon to 2pm, and with a light buffet provided by Richmond Painswick.

Christine Welsh

Local History Teaser

Last month's photograph showed the upper part of Tibbiwell as it was until 1921. For many years a four-storey malthouse stood at the top corner. It was demolished in 1921, and in 1924 the public bath house, designed by Sidney Barnsley of the Arts and Crafts movement, was opened.

Just below was the Golden Heart public house which finally closed in 1974. One of the stories about the origins of Painswick residents being called Bow-wows focuses on the Golden Heart. It tells of Stroud folk going there for a meal and asking for meat pie. The story is that, the landlord, having no meat in his larder, killed his own dog's puppies and cooked them in the pie. Only later did the diners discover what they had eaten – and with great relish, apparently – and from then on Painswickians were referred to as Bow-wows.

If you have a photograph which you think might challenge or interest readers, we'd love to hear from you.

Carol Maxwell

P. L. ALLARD 
www.allardbuilders.co.uk
Specialists in Period and Listed Property

- Renovations
- Refurbishment
- Cotswold Stone Tiling
- Roofing Services
- New Build
- Internal Work
- All Work Considered

01452 812840
telephone & fax 01452 814278
p.allard@tiscali.co.uk
2 Gloucester Road, Painswick, Glos, GL6 6RA

 **three gables**
dental, holistic + beauty centre

- ▷ PREVENTATIVE AND COSMETIC DENTISTRY
- ▷ BEAUTY THERAPIES
- ▷ FACIAL REJUVENATION

All in a relaxed and friendly environment with early, late and Saturday appointments available. On-site parking also available.

LET US BRIGHTEN UP YOUR SMILE

cheltenham rd painswick glos GL6 6XN
01452 814427
www.thethreegables.co.uk

painswick osteopaths. 

Paul Stamp D.O.
Helen Froggatt D.O.

Tel: 01452 301748
Painswick Surgery, Gyde Rd. Painswick

- Structural
- Cranial Osteopathy
- Sports Injury
- Migraine/Whiplash
- Parking Available

Dog Show

Painswick Companion Dog Show and Charity Fun Day was held on 9th July on the Recreation Field, and received a mix of sunshine and showers. We caught some serious moments on film.

Fiona Chapman tells the Beacon that entries were down on last year, and hopes that this was not a waning of interest shown in the past but only because the weather looked so threatening.

Fiona goes on to say, "Our judge, Mary Price from Slad, an Irish Setter specialist, gave Best in Show to Mrs J Miles from Shurdington with her Whippet, Zoe. Last year under a different judge Mrs. Miles and Zoe were Reserve Best in Show and Best Puppy, so it was good to see the partnership go one better this year".

The Novelty Classes began after a short lunch break, with a good entry in most classes,



particularly the Most Handsome Dog and Prettiest Bitch. The two Obedience Classes were judged by Janet Martineau from Tewkesbury. There was a very acceptable entry of twenty three in the first Obedience class which was won by Tracey Brian and her Boxer, Zuela. There was an entry of twelve in the second class which was won by Hayley Woodcock and her Border Collie, Star.

Among the charity stalls were Stroud Mencap and the Family Haven provided home-made cakes and other delights. Pet photographer Christopher Jones of Gloucester was in attendance for the second year running, he had a lovely display of his work and was busy all day answering queries and taking photos. Does one associate vanity with dogs?

Fiona was anxious to say "Thanks to the Trustees of the Recreation Field for allowing us to use the field and to George Hodder for preparing the field for us". And to make it all so worthwhile, "The show raised £457 for Hearing Dogs for Deaf People. Thanks to everyone who came along to support us."

Letters

The inclusion of letters, maximum 150 words, in these columns does not imply that the Beacon committee endorses the views expressed, or otherwise.

Weeds

Barbara Blatchley wonders:
The Council have suggested that 'weeds' should be destroyed along the streets of Painswick.

What is wrong with wild yellow Poppies and daisies growing out of walls, and Hollyhocks growing up lanes?

It is bad enough to have Traffic Wardens sticking fines on cars. Will we have Weed Wardens next?

The WAP - Fantastic Day

Keith Ayres writes from The Royal Oak:
Congratulations to ALL of the organisers

and helpers of the Wearable Art Festival for such a Fantastic Day. I have never seen Painswick with so much going on and so many people having a really great time.

Everyone had nothing but great things to say about the day. I can only add to that by saying that it was also extremely well organised with so much going on. It has done nothing but good for Painswick, its business community and its residents. We have been called an "It" Town by The Times.

The retail business community has greatly benefited from the WAP Teams effort and I for one am extremely grateful for their work and realise how very fortunate we are to have had such great organisers.

and Dawn Mallinson from the Patchwork Mouse:

A great big 'Thank You' to the organisers and all those who helped them. The months of hard work that went into this event certainly gave us all a truly memorable day.

Small Business of the Year

From Canton Acre Kate Buser has written:

I would just like to say how wonderful it was to see Painswick's own Michael and Claire Gamble winning not one but TWO categories at the Stroud Life Business awards last week.

As a neighbour of the Gambles, I see how tirelessly they work around the clock to provide a comprehensive funeral service. They deserve recognition as small business of the year for their dedication and hard work and it's great to know that they also consider environmental matters. Keep up the good work!

Neil Webster - book

Joss Pearson has written:

Neil Webster, my father, used to live in Turnstone House, Greenhouse Lane and was well-known in and around Painswick as was my mother the novelist and music critic Elizabeth Webster.

During his retirement he wrote a book about his wartime work for intelligence. However, although he had got clearance from GCHQ to publish it, this was withdrawn in 1985 for security reasons. Dad died in 1990 and mum in 2007. After this I found the manuscript in the house and approached GCHQ for clearance, which was granted in 2010.

The book titled 'Neil Webster's Cribbs for Victory: The Untold Story of Bletchley Park's Secret Room' by Joss Pearson is now published by Polperro Heritage Press and available in Stroud Bookshop or from the publisher.

(The Beacon hopes to follow this up and prepare an article about Mr Webster in the near future. Ed.)

Professional Ironing, Dry cleaning, Laundry & Repairs/Alterations

FREE
Collection & Delivery

Tel: 01452 740129

www.ironeasy.biz

JOHN DANDY

Established 1969 **MOTORS**

→ MOTs, Servicing & Repairs ←

→ Free collection & delivery service ←

→ Proprietor Painswick resident ←

→ Free courtesy car (subject to availability) ←

Goodridge Avenue, Gloucester GL2 5EA
☎ (01452) 527340

QUALITY & VALUE WHERE IT COUNTS

Tired PC

Poor Performance
Does it need fixing?
Call IDZ for advice and support.

All hardware and software repair, virus removal, upgrades and new installations.

Broad experience, home, office, etc.

Local, friendly service

(01452) 812733

The Painswick Beacon

Environmental stewardship

Barely a day passes without news of yet another 'consultation', and indeed we carry more than one other item in such vein in this issue. Some are not of immediate significance to us, and we understand readers dismissing them for that very reason.

However, we venture to suggest that this is one which should arouse interest because it has a significant impact upon the beacon which towers above this village of ours; the landmark which has been a focus across many generations whether as a fortress, a rallying point for battle, a look-out, a signalling point in a national network, or as in more recent times a haven of peace and recreation and distinctive and unique wildlife - and so much more for those with memories.

An Open Meeting is being held this month, on Wednesday 17th, in the Town Hall at 7.30pm, and be concerned entirely with this land under Manorial stewardship through Selina Blow, and convened jointly by the Parish Council, Painswick Beacon Conservation Group and Painswick Golf Club. We know of no such tripartite meeting having been arranged before now.



The reason for the meeting? The Farming and Wildlife Advisory Group alongside Natural England have ideas they state as:

Consultation regarding Wildlife Management of Painswick Beacon through Environmental Stewardship

To include: opportunities to get further information on the scheme; how to get involved in many aspects of volunteering; outlining the proposals for re-introduction of grazing on selected areas of the Beacon with cattle.

Jenny Phelps, known to many interested in environmental matters in this part of the world, is the primary contact for this consultation and from whom further information can be obtained through jenny.phelps@fwag.org.uk Gloucestershire FWAG on 01452.503853

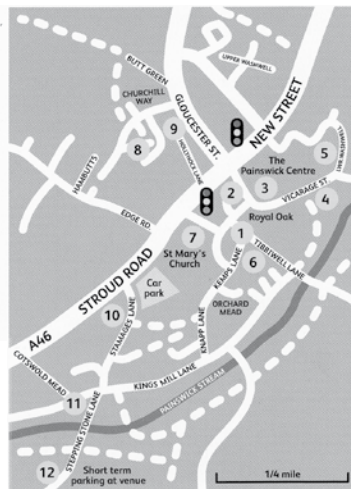
The accompanying photograph, similar to our own, of Welsh Black cattle already grazing hereabouts, has to rouse interest, if not curiosity. Don't say you never knew some serious ideas were being implemented without your having the opportunity to contribute.

Painswick Arts Trail Sunday 28th August 11.00am – 4.00pm

On the 28th Painswickians and visitors alike have the opportunity to explore Painswick and view artists work; this when eleven artists are opening their doors to allow visitors into their homes and private studios. The hope is to share art and show-case our beautiful village to locals and visitors alike as the trail meanders off the beaten track.

ARTISTS

Alan Shearer
Andy Lovell
Anne Castle
Charles Dorman
Helen Baker
Jackie Herbert
Jane Garbett
Jennifer Shonk
Rupert Aker
Sara Kirby
Somerset Moore



There will be an impressive variety of work on display including the work of Charles Dorman who makes cross stitch tapestry to his own design. Print maker Andy Lovell, Pastel specialist Somerset Moore, Textile artist Jennifer Shonk. Other artists include Alan Shearer, Anne Castle, Helen Baker, Jackie Herbert, Jane Garbett, Rupert Aker and Sara Kirby who between them will be showing: portraiture, landscape, abstract and still life in a variety of media.

Pick up a map (as shown, but with additional information) at outlets around the village, view artists work at a taster exhibition at The Royal Oak and follow the arrows on the day. You will be assured of a friendly welcome at all destinations.

Jane Garbett

Art Fair

Between Monday 15th and Friday 19th August a unique Art Fair of six Gloucestershire artists is exhibiting in the Town Hall.

Richard Straley from Cranham - abstract landscapes in glorious watercolours,
Yola Quinn - floral semi abstracts and portraits by commission, from Sheepscombe,
Ray Hill - colourful landscapes inspired by nature, from Birdlip,
Nicki Gwynn-Jones - stunning photographs of birds,
Trudi Hayden - landscape realist painter, and
Sheila Bryant - paintings, drawings, portrait and landscape.

There will be original artwork, prints, photographs, art cards and art books, something for everybody to enjoy, all at affordable prices.

Ray Hill 07743.784092

INSIDE OUT
cleaning services

Professional Carpet, Rug, Upholstery & Stone Floor Cleaning
Carpets dry in 30 minutes

Craig Lindsey

01453 548152
07890 282535

Craig@insideoutcleaningservices.co.uk
www.insideoutcleaningservices.co.uk

NCCA MEMBER
FSB MEMBER

Cardynham House
BISTRO

*Come and enjoy our
Romanian atmosphere
with Catalina and Marian*

Speciality and saver menus

01452 810030

**PAINSWICK
ELECTRICAL SERVICES**

- ✓ 40 years' experience
- ✓ 24-hour Emergency Service
- ✓ All electrical work undertaken
- ✓ Inspection & Testing
- ✓ Free Estimates
- ✓ PART P REGISTERED

NICEIC
DOMESTIC INSTALLER

Mike Turner
01453 758342 07850 784899

Artists and artistes opened the 'season'

We 'caught' three presentations, among several in action.

Lakeside Orchestra

Adult players who have come together during the last four or so years to re-use musical skills they once learned at school, or begin to play an instrument for the first time in an ensemble. This enchanting afternoon and environment was at Sheephouse on 9th July.



Rupert Aker

Pondering upon one of his many eye-catching fine exhibits in the Cotswold Room.



New Trustees Sought!



We invite local residents to consider becoming a Trustee of the Painswick Centre to help promote, manage and develop this important community

asset for the future. We would like to co-opt at least one more Trustee this year, with further opportunities to join the board of Trustees next year. If you would like to know more about the role of a Trustee, please contact Jackie Herbert on 813229.



Gloucestershire Society of Artists

Rosemary Harvey, Chairman, putting the finishing touches to their first exhibition in Painswick. This Society was formed in 1921 and has about 140 members, with exhibitions at Nature in Art and St John's in Northgate Street Gloucester.

Centre Café Open for Business

The Centre Café is open again during the Arts Festival, serving refreshments from Wednesday to Sunday (see diary for dates). Teas, coffees, light lunches and cakes will be available from 10.30am to 4.00pm.

'A Year in Painswick' Calendar for 2012

The Painswick Centre's 2012 Calendar 'A Year in Painswick' is already selling well. The price of the calendar is £6.00 (£6.50 with envelope for posting). The calendar is on sale in The Post Office and the Artists Studios as well as other village retailers, or direct from Sue Lendon (813791) or Jane Rowe (813228). Profits from the sale of calendars and the café will be put towards this year's projects: improved heating in the Cotswolds and Green Rooms, new flooring and furniture in the Green Room, and redecoration of the Beacon Hall.

*Jane Rowe, for the Trustees
Room bookings & enquiries
07769.182229*

In denial

The Beacon was, as few readers will have noticed, vilified in the Mid Outback Times of Western Australia yesterday and uses its own columns to reject the imputation that any form of thacking was used to prepare the article we deny ever publishing regarding 'goings on' in Golf Course Avenue. That we came by the detail of the underworld machinations at Nos. 79 and 80 in this discrete residential area other than by the AA techniques (the Attenborough Approach) has to be preposterous.

The editor (whose name has been codified as Ellsie to reveal his identity) has assured his Board of Directors that his revelation that Mr RO (Bunny) Dent entered into promiscuous relationships with the offspring of his neighbours has been conclusively proven. This has been evidenced by the discovery of unauthorised tunnelling well away from footpaths, the death of *Taraxacum officinale* in the vicinity, occasional sighting of his distinctive posterior moving away - when disturbed

- at considerable speed, and illegitimate offspring out of all proportion to the expected birth rate for the area.

Armed officers supporting the locally based chief Handy Man have failed lamentably in cornering Bunny. Drawing upon considerable local talent an artists impression has been made available to us, and is reproduced here lest any can pass on further identification to aid enquiries.



Meanwhile Ellsie testified before a Common Committee, expressed his shortcomings - it being the most humbling day of his life - and asserted, that he "Never had knowledge of the habits or outcome, and that his youthful and highly respected reporters must have colluded in concealing it from him".

ELECTRICAL AND ALARM SERVICES est. 1990

Rewires, extra lights, sockets, 17" edition consumer units, showers etc fault finding, burglar alarm systems, CCTV installations, we also take over services of existing systems.

For a prompt reliable friendly service contact **Steve Gallagher**
07836 273768
01453 791209
website: eaas.me.uk

DOMESTIC INSTALLER

CO

Caroline Crawford
INTERIOR DESIGN

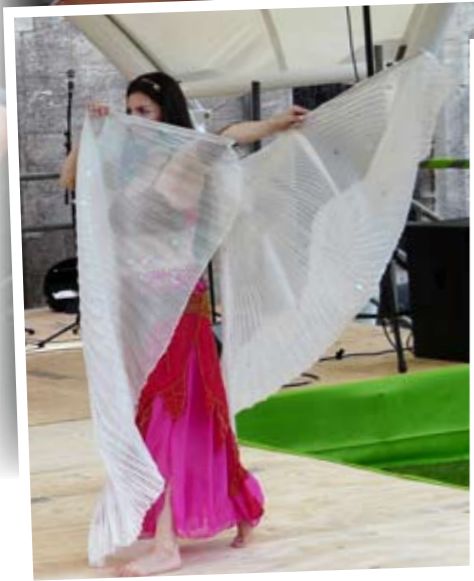
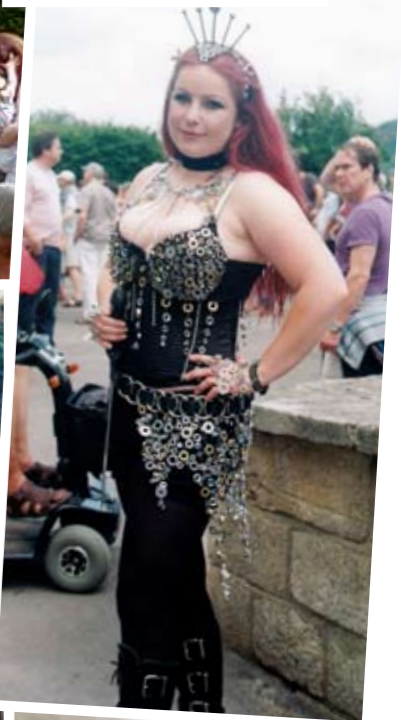
- Interior Design
- Made to Measure Curtains
- Soft Furnishings & Fabrics
- Upholstery & Wallpapers
- Paint Techniques & Flooring
- Lighting & Accessories

Opening times: By Appointment
Tel/Fax: 01452 813631
www.carolinecrawfordinteriors.co.uk
email: cci@carolinecrawfordinteriors.co.uk



Wearable Art Painswick

17th July 2011



A talk about our local NHS Services

Nicola Hayward, Practice Manager at The Surgery in Painswick will be giving a talk and answering questions on Tuesday 13th September at the Town Hall between 7.00 and 9.00pm.

At this informal meeting, Nicola will discuss a number of issues including what services and facilities we currently have in Painswick together with medical resources available to us in Stroud and Gloucester, how the 2004 Contract changed General Medical Services the impact on income, the management of patients with long term conditions, the 'Choose and Book' system of referring patients to secondary care, and the future – Practice Based Commissioning.

There will also be an opportunity to ask questions at the end of her talk. We hope that you find this session informative and useful and if there is anything you would specifically like Nicola to talk about, do please let her know at the surgery.

Photo challenge

We take some pride in the pictures we publish in these pages and are appreciative of all which come to us for possible use. We are not alone in thinking that one picture can say more than many hundreds of words.

We wonder whether readers would let us have any they take this month which might typify

'Painswick in August'

We would need any by the closing date for copy, the 20th, and hope to have at least one we can select to share with other readers. If humorous, so much the better.

Do have a shot, please.



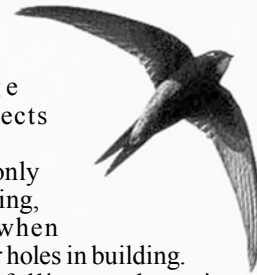
Screaming Swifts

In St Mary's Street one morning in late June, screaming Swifts were careering at high speed above and around the rooftops of buildings – a sure sign of high summer!



Swifts are among the fastest flying birds in the UK, with long, narrow crescent-shaped wings and a short forked tail (at a distance they can be confused with the similar-shaped but larger Hobby which also overflies the Painswick Valley in summer). The plumage is brown but Swifts appear black in the sky.

In fine weather Swifts fly very high in the sky, flickering by long their large in flying insects spiders.



circling on wings, followed glides, when gapes take and airborne

Swifts not only sleep on the wing, stop flying when roof crevices or holes in building.

feed but and only nesting in

Nationally numbers are falling, at least in part because renovated and modern buildings tend to reduce breeding opportunities. Please let the Bird Club know of any breeding sites: we can forward details to researchers and conservationists.

Like Swallows and Martins, Swifts are migratory birds. Food supplies high in the sky begin to diminish surprisingly early in the year. Their loud, shrill cries can rarely be heard in the locality beyond mid-August. Swifts over-winter in Africa. We look forward to the return of these magnificent birds in early May next year.

We understand that local resident Andrew Duffield rescued several cygnets (see picture in the June Beacon, page 12) on the Painswick Mill pool. They had been swept over the weir and were trapped on a ledge below. With fish net in hand and adult swans too close for comfort, Andrew managed to retrieve the cygnets. The swan family were all together again, and we too express thanks for what must have been a tricky exercise.

Vacancies still exist for the Bird Club's field trip to Oxfordshire in September. Please call 813094 for details.

Bill Boydell 813094

Programme for 2011-12



The Committee is preparing the programme for next season and the new leaflet should be available at the end of August.

Our experiment of meeting on Fridays has not been wholly successful and the problem we

had about reverting to Thursdays has been resolved, so we have decided to go back to the original system of meeting then. The first meeting of the new season will be on Thursday 15th September at 7.30pm in the Town Hall. We look forward to seeing our members and any who would like to join them.

If you require information about us, or copy of our programme, please contact our Chairman Alex Nichols on 01453.873396 or e-mail alex84610@aol.com

BOARDWALK FLOORING WOODFLOOR SPECIALIST

All types of wood flooring supplied and fitted
Floor sanding and restoration

Please call for free quotation and samples
07879 452150 / 01453 766134

Family Tree Funerals



For a much, much more personal funeral

01453 767 769

www.familytreefunerals.co.uk
The Old Painswick Inn, Stroud

Grove Court,
Upton Hill
Cedar Motor House
Upton St. Leonards
Gloucester
Tel: 01452 617240
Mob: 07976 322735

MOT Testing Station
Situated just off Upton Hill. Grove Court is 100 yds past the kings Head Pub on the right.

PAINSWICK ACCOUNTING & TAXATION SERVICES LTD

FOR ALL OF YOUR ACCOUNTING AND TAXATION NEEDS

PLEASE CONTACT SHARLA DANDY
ON 01452 813533
OR EMAIL sharla@paatsltd.co.uk

MEMBER FIRM ICAEW

VISIT OUR WEBSITE
www.paatsltd.co.uk
FOR MORE INFORMATION



Where? Painswick-The Church Rooms
When? After school on the First Thursday in the month October 6th/ November 3rd/December 1st.
Time? 3.30- 5.30
Who is it for? Primary school children and their carers

What do I need to do? Come with a parent or carer

What is it? It's a once-a-month time of creativity, worship and eating together

A team across the Beacon Benefice is trialling Messy church on the first Thursday of October. We are very excited about it as it is our attempt to bring church to families during the week. It will have a focus with activities outside and in, a short worship time and a meal at the end. There will be no cost. It will be fun.

If you would like to help, provide food or want to know any more information email

Ann Kennett a.kennett279@btinternet.com

Musical delight

An unexpected delight for many people attending the Wearable Art event was to hear the beautiful voice of 14 years old Tim Mahendran. Tim who comes from Sheepscombe captivated his audience with a number of operatic arias and ballads. Tim is pictured in our montage of Wearable Art activities at the microphone in Friday Street.

The following weekend Painswick residents had the opportunity to hear Tim singing again at the Stroud's Got Talent contest which formed part of the Church of the Immaculate Conception's One Parish Day. The day which is held annually is designed to bring together parishioners from the other Catholic churches in the Stroud parish. To those who had heard Tim sing previously it came as no surprise to learn that the judges had announced Tim to be the overall winner of the contest.

A Marathon?

It certainly will be, but with a difference – at St James the Great in Cranham.

No real physical effort required unless you choose to take part in the wee small hours in which case you need to either stay up late or get up very early!

We hope to read the King James Bible from cover to cover.

The reading will start at 7.00pm on Wednesday 28th September, and end around 4.00pm on Sunday 2nd October.

The reason?

- To celebrate the 400th anniversary of The King James Bible
- To celebrate the beautiful language of this version of the Bible
- To raise money to keep our 12th Century Church, rebuilt in Victorian times, in good order for years to come.

A few of us have had a trial run: 2 people will read alternate verses for half an hour.

Some may choose to stay and listen for half an hour and then read again. So the commitment could be about half an hour or for as long as you like. Some may choose to read on separate occasions.

Please phone Phil/Sue Stick 813407 if you would like to take part. E-mail: oakfield100@btinternet.com

Sue Stick



CENTRELINE
ARCHITECTURAL SCULPTURE

www.centrelinestone.co.uk

STONEMASONS
STONECARVERS
SCULPTORS
CONSERVATION
CRAFTSMEN

+

ADVISORS

Fairfax House, Vicarage Street, Painswick
Office: 01452 813892 Workshop: 01285 821074



**Eye examinations at home
- for the housebound**
Specialised service - free (NHS) for those over 60, including Glaucoma screening and full sight test
Tel. 01453 833272 or 07800 821624 (mobile)

BEACO-DOKU

We started upon garden and wild flowers last month, and one reader tells us she imagined the sweet smell of **V-I-O-L-E-Ts** and completed the Beaco-Doku in less than 15 minutes.

T	E	V	O	L	I
I	L	O	V	E	T
E	V	I	T	O	L
O	T	L	E	I	V
L	O	T	I	V	E
V	I	E	L	T	O

Obviously too many clues last month, so try **T-U-L-I-P-S** this time round. Maybe let us know if you succeed?

		T	L		
U				P	
		U			
	S		P		T
		S		T	P
T			I		

Peter Barnfield
Painter and Decorator
Need a hand with your decorating or odd jobs?
External/Internal decorating
Paperhanging – no job too small.

Free Quotations
References available on request
Call me on Tel: 01452 411182
Mobile: 07881408380
Peter.Barnfield@blueyonder.co.uk

'Burning Ambition'



The talk given by Ray Drew to Painswick WI in June 'My Life in the Fire Service', could have been sub-titled 'A Burning Ambition', as he had aspired to becoming a fireman since he was a young lad growing up in Gloucester. Using slides to illustrate his talk, Ray gave a most entertaining history of the Gloucestershire Fire Service, from the 19th century onwards, including photographs of the earliest fire-fighting appliance, which was horse-drawn, to the modern day sophisticated models.

Armed with a collection of fireman's helmets, the oldest, a magnificent polished brass creation dating from 1892, and parts of the uniform and equipment he had used himself during his working life, Ray gave us a most informative account of his time in the Service, interspersed with amusing anecdotes and an insight into how firemen must be prepared to deal with almost any situation - some tragic and distressing, others of a more 'personal' nature, requiring a delicate and tactful approach, to deal with people in seriously compromising difficulties, where fireman were called out to deal with what could potentially be highly flammable situations in themselves!

Ray's dream to become a fireman did not just become a reality, it was also a very successful one, as he retired in the exalted rank of a Senior Fire Officer, at the end of a long and rewarding career, which culminated in a visit to Buckingham Palace to receive an award for his distinguished service.

At the following WI meeting, on 26th July, James Taylor talked about 'The Auction Business'.

Maggie Drake

Golf

Celebrations for 120 years

By the time you read this, Painswick Golf Club will have celebrated its 120th birthday with a mix of competitions and social celebrations on 30th July.



Mens Section

The A Team drew their return match against Cotswold Edge (3:3) away. The B Team lost against Forest of Dean 4½ - ½ away, and 3½ - 2½ against Gloucester at home, but managed to win against Cleeve Cloud 4-0 at home. All matches proved very enjoyable and a good time was had by all.

Congratulations to our Vice Captain Steve East for scoring an "Albatross" (a score of three under par) on the par 5 eighth hole, to our Captain Martin Taylor for a hole-in-one on the tenth, and to Gil Locke for a hole-in-one also on the tenth.

Ladies Section

The ladies section continued their winning streak with home wins against South Cerney (3½ - ½).

Juniors Section

Congratulations go to Kenny Overthrow on winning the Gloucester County Junior Championship.

Seniors' Section

The Seniors Captain, Jim McNamara, hosted a most enjoyable Senior Captain's Day on 23 June. The competition on the day was the Organ Niblick – a competition where you are limited to only three clubs and a putter. The best score was 43 points – achieved by Brendan Nunan and Nigel Barnett.

In the event of a tie, the winner is adjudged to be the player with the best last nine holes. But both had identical scores, so the best last six holes were looked at. Again identical scores, but looking at the last three holes, Nigel Barnett emerged the competition winner.

Tennis juniors

Painswick junior tennis players have had a busy start to the summer. The "Road To Wimbledon" finals were won by Barnaby Jackson who beat Charlie Richards 6-0,6-2 and Lara Fair against Grace Ruddy 6-2, 6-2. We also entered teams in the first division of the National Junior Club League where the boys under 14 and 16 did well finishing mid table in both age groups. A new player stood out, Adam Cox, who battled against much more experienced players but never gave up. Our under 16 girls team was particularly strong and had a final match to decide the winners of the league against East Glos Club. The team was Megan Butterworth, Chloe Lawrence, Sophie Barnett and Sophie Hall, the match was so evenly balanced that 5 of the 6 matches went to one set all and then to a 10 point championship tie break where unfortunately Painswick lost overall.



Alicia and Sophie Barnett and Kate Davies represented Stroud High School at the 2011 National Schools Tennis Championships held in London, which is a week long tournament. They won 50% of their matches and did extremely well in again getting to the National finals. At the Gloucestershire Schools Doubles Championships Painswick girls won all age groups. Lara Fair and partner in the Under 14s, Sophie Barnett and partner in the Under 16s and Chelsea Warrington and Alicia Barnett in the Under 18s.

Congratulations to Alicia Barnett who recently played the Wrexham \$25,000 professional tournament for ladies. Following a very good win over another British player Alicia then played an Australian lady who is 793 in the world. Alicia dominated the first set 6-0, then a very close second set went to a tie break which Alicia also won. She then played a German who is 249 in the world and a very strong player. She lost 1-6,0-6 but was competitive in the entire match with the serve making the big difference. Alicia now needs 2 more professional wins to gain an Adult world ranking.

Tennis ladies

Salad stand at Wearable Arts



**Physiotherapy &
Sports Injury
Clinic**



Acupuncture
Cranio-Sacral Therapy
Sports Injuries
Sports Massage
Osteoarthritis Management
Hydrotherapy

AT

Painswick &
Stroud

Phone: 01453 755948

Call now for a consultation and
begin your road to recovery

**Tree Surgery
Garden Maintenance**

Man with a saw:
Use me for your tree pruning
and tree surgery
Flexible & local service
Rubbish disposed
Garden Maintenance

- Regular contract
- Winter maintenance
- Fencing
- Chipping

Firewood delivered locally

Fraser Hall
Brookthorpe Gloucestershire
07766 132903

Fully qualified and Insured

**General Building Work
Kitchens / Bathrooms
Extensions / Garages
Barn conversions
New Build
Renovations Etc.**

A Member of
The Guild of Master Craftsmen

**Richard Twinning
& Partner**

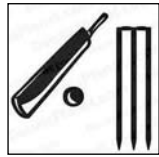
General Builders
With over 20 year's experience

Tel: 01452 812086
Mobile: 07899 791659
Fax: 01452 810785

**Natural Stone Work
Hard landscapes
Dry stone walling
Patios and Pointing**

Cricket

July has been another good month for the Painswick club with some excellent results. Most cricketers would feel that they had had an exceptional season if they were able to score 1,000 runs before August was out so Neville Talbot's achievement has been even more remarkable in that he reached the magic total before the end of June. His outstanding form has continued and against Cinderford St John he was unbeaten with a score of 189.



Painswick Cricket Week has been blessed with fine weather and the 20/20 Tournament on the opening Sunday was a particularly good day not least because the final was played between Painswick and close neighbours Cranham. In a very exciting finish, Painswick were dismissed four runs short of the Cranham total. Painswick



are at Cranham this weekend with cricket matches as part of the Cranham Feast. Painswick's players have vowed to gain their revenge!

Pictured is Cranham Captain Simon Green with the 20/20 shield which was presented to him by Painswick Club Chairman Steve Pegram.

July results

Sat 2nd. Painswick 1st XI 118 Bredon 1st XI 228-6. Bredon 2nd XI 184-8 Painswick 2nd XI 186-1 (J Lee 73 P Wilkie 61*). Frocester 5th XI 183 Painswick 3rd XI 186-2 (P Giles 116*). Painswick 4th XI 145 Stroud 4th XI 146-5.

Sat 9th. Painswick 3rd XI 197-7 Slimbridge 2nd XI 133.

Sat 16th. All matches cancelled – rain.

Sat 23rd. Painswick 1st XI 329-4 (N Talbot 198*) Cinderford St John 1st XI 202-9.

Cinderford St John 2nd XI 139-6 Painswick 2nd XI 140-4 (B Neville 53).

Charfield 2nd XI 24 (T Morris 6-10) Painswick 3rd XI 25-1.

Sun 24th. 20/20 Tournament. Final. Cranham 114-9 Painswick 110.

August fixtures at Broadham Fields

Sat 6th. Painswick 1st XI v Tewkesbury 1st XI.

Sat 13th. Painswick 2nd XI v Lydney 2nd XI.

Sun 14th. Painswick v Hambrook.

Sat 20th. Painswick 1st XI v Hatherley & Reddings 1st XI.

Sat 27th. Painswick 1st XI v Bredon 1st XI.

Darts



The Falcon Darts team have had another great season.

The Ladies were winners of Division 2 of the Stroud District League; no mean feat. Sandra Saunders, pictured, was Runner up in the SDDL Singles Knockout Competition.

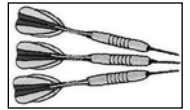
Our own players award was presented at the Annual Dinner and went to Top players: Sandra Saunders (pictured) and Samantha Kemmett.

Runner up: Jackie Lane.

The Captain's Award was to Jackie.

We are now into the mixed team season and wish both our 'A' and 'B' teams good luck.

Once again our special thanks to The Falcon Inn for their continued support.



Linda Cooke

Wick Street Security

Locksmith & Secure Solutions

Moved Home or Office? Who's Got Keys?

All types of security equipment supplied & fitted to insurance standards. Lock opening service & period lock restoration.

Tel: 01452 812201 Mob: 07812 540178
Email: info@wickstreetsecurity.com



Home of the Modern Day Puppy Dog Pie

**Proud to Sponsor
The Painswick Art Trails
Sunday, 28th August**

**NEW SUMMER MENU &
OPEN ALL DAY FROM 11.00 am**

Support Your Local

**To Book a Table for Lunch or Dinner
CALL: 01452 813129**

COLIN NASH CONTRACTOR

Fencing - Hedgecutting - Topping etc.
Paddock cleaning
with tractor or quadbike

Telephone 01452-813104
Holcombe Farm
Painswick GL6 6RG



Pressed 2 Perfection

The Premier Ironing Service

- ✓ Reliable and accommodating
- ✓ Free pick up & delivery
- ✓ Only £9.00 an hour and some prices per item

Viki: 07976 400139

Call in the perfect solution!

Davenports

Landscaping & Building

Renovations • Extensions • Natural Stone Work • Paving & Driveways • Dry Stone Walling • Groundworks • Decking

T: 01452 813660
M: 07791 693439
E: mike@davenports.uk.com
www.davenports.uk.com

August News

A bit of "housekeeping" to start off with this month: I'm not here.....well, obviously I am but I'm writing this in July! My colleague Angela has kindly said that she will be very happy to hear from you in my absence until 5th September. You can reach her on 07776.245791 or call the "Adult Help Desk" which covers all local social service enquires on 01452.426868.

To the lady who left me a message about an elderly friend of hers who needed help with personal care and who may be wondering why I never got back to her. I am so sorry; I deleted your message instead of saving it! Please call me (or Angela) again so that I can see what I can do to help.

You may be aware that a company called "Mears" has taken over much of the home improvement work previously done by "Care and Repair". It will support people with help in improving or adapting their homes so they can remain living at home for longer. Services range from bathroom and kitchen adaptations, to improvements and repairs, to a handyperson service, as well as advice and guidance on grants and funding that may be available to residents to help pay for the work. The service is available to people referred to Mears by social care and health services, or by people who want to make changes for themselves.

However, our local branch of Care and Repair based in Stroud is still very much alive and well and can offer many of the same services should you be paying independently. They also operate a scheme called "Helping Hands". The Helping Hands Service can be provided in two ways.

1. A fully managed service for people who do not wish to

VILLAGE
Agents

handle money or make their own arrangements. This currently costs £9.84 an hour. Invoices are provided monthly and standing order payments can be set up.

This is particularly suitable for people who:-

- are in receipt of Direct Payments via Adult Social Care
- have a condition that makes it difficult to handle money or make arrangements
- have their fees paid through another source
- would simply like someone else (reliable) to handle things for them

2. A 'matching' service with ongoing support to provide holiday and sickness cover, support if needs change and support if there is a problem with a Helping Hand or the arrangements. This costs £30 per year. Flexible payment arrangements with monthly, six monthly or yearly options are available. With this option the charge is £8.50 per hour paid directly to the Helping Hand.

This is suitable for people who:-

- are happy to handle their own money
- are happy to make their own arrangements

If you need help with home improvements and are in receipt of certain benefits you might be able to get some help from the British Legion if you've served in the forces for at least 7 days or are the dependant of someone who has served. It's always worth having a chat to Care and Repair to see if you might be eligible.

Perhaps you would like to do some part time work that could be very rewarding? Why not think about working with Care and Repair or similar organisations which help older people living in our communities. Care and Repair 01453.753471

Lou Kemp 07776 245767

PROPERTY REPORT for July from Hamptons

In terms of market headlines June was a month of records. This included the first dip in real earnings for 30 years, which was countered by the largest drop in the number of unemployed for over 10 years and record low mortgage rates. Such extremes, both negative and positive, can make it difficult to know which way to turn to understand how the residential market is likely to perform going forward.

Hamptons International can lay claim to a few records of its own in June, having achieved the all-time best sales performance in the company's 140 + year history. Some market commentators have sought to talk down the trajectory of house prices over the next 12-18 months, but as market participants on the frontline of activity, our network continues to see strong demand.

These results were considerably ahead of expectations but there remains a strong sentiment of caution in the market.

Without wanting to sound like a stuck record, I am still advising clients that the key to successfully selling houses at present is in realistic pricing from the launch.

New properties on our books include: Timbercombe Cottage in Sheepscombe, a delightful extended 4-bedroom period house; Brotherton Farm House, a charming 3-bedroom period house with acreage and outbuildings; Greenacre in Slad, a 2-bedroom bungalow with superb views; Blacklaines House, a substantial detached house between Birdlip and Brimpsfield; Museum Cottage in Vicarage Street, a unique and charming 3-bedroom cottage; 6 Stroud Road, a well-presented 4-bed townhouse; Woodcote, a 4-bed detached house in The Highlands; Lynton on the Longridge, a 2-bedroom bungalow with superb views of the village; The Villa, Sneedhams Green, a beautifully presented detached house; Norbreck House in Cotswold Mead, an extended and well-presented family house; Overdale in Paul

Mead, Edge, a contemporary family house in a generous level plot; Ashcroft House, Stroud Road at a substantially reduced price; North View in Madams Wood, a recently constructed house with amazing far-reaching views; and The Old Mill in Haresfield, an historic building in a delightful rural hamlet.

Properties to have recently gone under offer include: 12A The Croft; 3 Yew Tree Cottages in Sheepscombe; The Reddings and Vatch Cottage in The Vatch; and Cherry Tree Cottage in Stroud Road

Whilst those that have now sold are: Beech Cottage in Beech Lane; Turnstone House in Greenhouse Lane; The Old Stable in St Mary's Street; Long Mynd in the Highlands; Kantanta in Lower Washwell Lane; The New House in Cranham; 14 Berry Close; Riflemans in The Vatch; Clovermead in Upton Lane; and 11 Woodlands Green in Upton St Leonards.

Guy Tabony Branch Manager



**THREE COTSWOLD OFFICES
& MAYFAIR LONDON**
PrimeLocation.com

New Street PAINSWICK
01452 814655
www.murraysestateagents.co.uk



In-depth local knowledge. A global network, including 5 Cotswold offices. Why settle for anything less?

Hamptons Painswick
01452 812354

www.hamptons.co.uk

AUGUST

Sat	6	Lansdown Art Club group exhibition - daily until 7th Aug. Gloucestershire Guild of Craftsmen Summer Exhibition: Daily until 21 August Ange Mullen-Bryan - Open Studio & Adele Lambert - Open Studio. Wednesdays - Sundays throughout August Rococo Gardens: Art in the Garden sculpture exhibition: daily until 31 August Café open: Wednesdays to Sundays - daily until 13 August	Town Hall Painswick Centre P. Centre Art Studios Rococo Gardens Painswick Centre	10.00am to 5.00pm 10.00am to 5.00pm 10.00am to 4.00pm 11.00am to 5.00pm 10.00am to 4.00pm
Sun	7	Angela Cash Watercolours and Oils - daily until 13 August	Painswick Centre	10.00am to 5.00pm
Mon	8	'Escape' - New works by local artists Ange Mullen-Bryan & Nadine James - daily until 14th August	Town Hall	10.00am to 4.00pm
Fri	12	Country Market - Coffee available - Fridays Theatre Club Outing to Malvern	Town Hall Stamages Car Park	10.00am 6.00pm
Sat	13	Painswick Valley Guided Walk with Royden Hales The Cotswold Male Voice Choir	start - St. Mary's Church Richmond Painswick	10.00am to 1.00pm 7.00pm
Sun	14	Art Exhibition - Ahrabella Heabe Lewis - daily until 20 Aug.	Town Hall	10.30am
Mon	15	Art Fair - Landscapes, figurative and abstract paintings by six local artists - daily until 19th August	Town Hall	9.30am to 6.00pm
Wed	17	Cotteswold Naturalists Field Club Excursion: Tour of Meysey Hampton & Fairford Churches + lunch & tea Painswick Beacon: Environmental Stewardship	Stamages Car Park Town Hall	10.45am 7.30pm
Thu	18	Horticultural Society Outing: Hidcote Manor Garden, Chipping Campden	Stamages Car Park	2.00pm
Sat	20	Copy dateline for September Beacon The Country Studio group exhibition - daily until 29th August	Town Hall	9.30am to 5.00pm
Thu	25	Health and Digestion: Kate Tenney	Painswick Centre	7.30pm
Sat	27	Contemporary Free Dance Workshop: Your Individual Dance is Art: Tel: J. Lynch 813220 / 07812882618 £25 Jewellery & Fine Crafts Event	Church Rooms Painswick Centre	10.30am to 6.00pm 2.00 to 5.00pm
Sun	28	Painswick Art Trail Open Studio: Claire Nayegon, Stained Glass - also 29th	start - the Royal Oak P. Centre Art Studios	11.00am to 5.00pm Daily
Tue	30	Tempt Your Taste-buds - Indian Theme	Richmond Painswick	from 6.30pm

SEPTEMBER

Fri	2	Friday Club: A Walk in The Alps - Ann Burges Watson	Town Hall	2.30pm
Sat	3	September Issue of The Painswick Beacon published		
Wed	7	Probus: The Extraordinary Life & Death of Edward II - Peter Petrie Parish Council Planning & Frederick Gyde Trust meeting	Painswick Centre Town Hall	10.00am 7.00pm
Sat	10	Horticultural Society Annual Show	Painswick Centre	2.30 to 5.30pm
Tue	13	Talk about local NHS: Nicola Hayward	Town Hall	7.00 - 9.00pm
Wed	14	Table Tennis restarts	Painswick Centre	7.00 to 9.00pm
Fri	16	Friday Club: Textile Art - Gill Allen	Town Hall	2.30pm
Tue	20	Painswick Players AGM	P. Centre, Cotswold Rm	7.30pm
Wed	21	Probus Outing to Dean Forest Railway Parish Council Meeting	Stamages Car Park Town Hall	10.00am 7.30pm
Sat	24	Friday Club Autumn Outing to Malvern Show		
Sun	25	Annual Clypping Service - Preacher: Rev. Tim Hastie-Smith	St Mary's Churchyard	3.00pm
Mon	26	Painswick Bird Club Residential Field Trip to Oxfordshire, Blenheim & The Thames		
Tue	27	Yew Trees W.I.: Medical Women Through The Ages - Jenny Barraclough. Painswick Players Playreading	Town Hall P. Centre, Green Room	7.30pm 7.30pm
Thu	29	Theatre Club Outing to Stratford Gloucestershire LINK Information Event	Stamages Car Park Richmond Painswick	10.00am 12 noon to 2.00pm
Fri	30	Macmillan: World's Biggest Coffee Morning Friday Club:Herbal Medicine - Caroline Sheldrake	Church Rooms Town Hall	10.30am to 1.00pm 2.30pm

OCTOBER

Mon	3	Community Lunch: Hosts - St Mary's Church	Ashwell House Centre	12 noon to 1.15pm
Wed	5	Probus: National Parks - Anne Saunders Cotteswold Naturalists Field Club Lecture: Windmills in Art & Design - Amy Woolcott. Enq. 813228	Shires Room, Falcon Painswick Centre	10.00am 2.30pm



Thu	6	Painswick Bird Club / Glos Naturalist Soc. "Sense & Non-senses of Birds - Dr Timothy Seller	Town Hall	7.30pm
Mon	10	Community Lunch: Hosts - Country Market	Ashwell House Centre	12 noon to 1.15pm
Fri	14	Friday Club: Keeping the Lights On - Stewart Price	Town Hall	2.30pm
Mon	17	Community Lunch: Hosts - Croft Primary School	Ashwell House Centre	12 noon to 1.15pm
Wed	19	Probus: Silver - Nigel Dimmer Parish Council Meeting	Shires Room, Falcon Town Hall	10.00am 7.30pm
Sat	22	Painswick Singers' Autumn Concert	Painswick Centre	7.30pm
Mon	24	Community Lunch: Hosts - Our Lady & St. Therese R.C. Church	Ashwell House Centre	12 noon to 1.15pm
Tue	25	Yew Trees W.I.: A Year in Nepal - Bob Price Painswick Players Playreading	Town Hall P. Centre, Green Room	7.30pm 7.30pm
Fri	28	Friday Club: Sue Ryder - Duncan Willoughby	Richmond Painswick	2.30pm
Mon	31	Community Lunch: Hosts - Dog Training Group	Ashwell House Centre	12 noon to 1.15pm

NOVEMBER

Wed	2	Probus: Freemasonry & its Secrets Part 2 - Ray Pearson Cotteswold Naturalists Field Club Lecture: The Cotswolds, A Literary Journey - Gordon Ottewell. Enq. 813228	Shires Room, Falcon Painswick Centre	10.00am 2.30pm
Fri	11	Friday Club AGM followed at 2.30 pm by Pat Daly's African Memories	Town Hall	1.45pm
Wed	16	Probus: History & development of helicopters - Mark Wilkins	Shires Room, Falcon	10.00am
Thu	17	Painswick Bird Club: At Home with the Robin - Mike Read, Wildlife Photographer	Richmond Village	7.30pm
Tue	22	Yew Trees W.I.: The Joys of Running a Charity Shop - Adele Lang (followed by AGM)	Town Hall	7.30pm
Fri	25	Friday Club: Deafness - Wendy Wildman, Glos. Deaf Association	Town Hall	2.30pm
Tue	29	Painswick Players Playreading	P. Centre, Green Room	7.30pm
Wed	30	Probus: Field Gun Battery in WW2 - Norman Snowden	Shires Room, Falcon	10.00am

DECEMBER

Wed	7	Cotteswold Naturalists Field Club Lecture: Cycling to Compostela - Alastair Goldie. Enq. 813228 Probus Club Christmas Dinner	Painswick Centre	2.30pm
Fri	9	Friday Club: Croft School Christmas Concert	Town Hall	2.30pm
Tue	13	Yew Trees W.I.: Christmas Gathering	Town Hall	7.30pm
Wed	14	Probus: Old Tyme Music Hall - Mike Wallace	Shires Room, Falcon	10.00am
Fri	16	Friday Club Christmas Lunch	Rococo Gardens	

2012

FEBRUARY

Thu	16	Painswick Bird Club: "Urban Dwelling Peregrines" - Edward Drewitt, Broadcaster & Wildlife detective	Town Hall	7.30pm
-----	----	---	-----------	--------

MARCH

Thu	8	Painswick Bird Club: "The Wildlife of West Wales" - Mike Robinson	Town Hall	7.30pm
-----	---	---	-----------	--------

JULY

Sun	15	Wearable Art Painswick	Village	
-----	----	------------------------	---------	--

While we are only too pleased to publish dates of forthcoming events as far into the future as organisers wish, and space permits, we may in future delete those which refer to recurrent weekly meetings at the start of the next month if such prevents us from including periodic events many months hence.

We urge those organising weekly events/meetings to use our other columns to make short reports and highlight their having frequent events.

Beacon subscribers		
as at 21st July	2011- 2012	This date last year
New or renewed after lapsing	66	94
Renewed from last year	482	446
Total including postal	548	540

Subscriptions

We print and distribute 1550 copies of the Beacon in most months.

If you have overlooked subscribing please leave yours at the Post Office or send to:-
Peter Roberts Long Finals, Stamages Lane, GL6 6XA

NEW APPLICATIONS

BUTT HOUSE, Butt Green. Demolition of existing garage & greenhouse, erection of new garage & attached garden room with associated landscaping.

DIDDLESVILLES BARN, Stroud Slad Farm. Change of use from barn to residential dwelling.

LLOYDSTONE, Stamages Lane. Installation of ground fixed Photo-Voltaic Cells and erection of two storey extension on northern elevation.

SOUTHFIELD HOUSE, Vicarage Street. Erection of a greenhouse.

WASHBROOK FARM, Edge Road. Construction of stables for three horses, associated tack room and feed store (partial reinstatement of previous equestrian provision). Change of use from domestic horticultural provision to equestrian accommodation.

THE NEW HOUSE, Friday Street. Rendering of front wall (to terminate below natural stone string course), installation of new door/surround into existing surround, new windows into new stone tripartite surround with a lowered cill.

ROSE COTTAGE, Damsells Mill Lane, Sheepscombe. Amended design of extension with lower pitch.

TELEPHONE EXCHANGE, Stroud Road. Amendments to elevations (following internal changes), parking arrangements, (to limit paved areas), and change external materials from lime render to Natural Stone, following permission S.10/1819/FUL

FOREST VIEW, Far End, Sheepscombe. Single storey oak and stone extension, new dormer to east elevation and minor alterations to porch.

BARBERS, Friday Street. Replace existing porch entrance with minor alterations.

HIGHFIELD, Longridge, Sheepscombe. General refurbishment of the building internally and externally (including all new windows and doors plus re-rendering). Also includes the erection of two extensions.

KANTANTA, Lower Washwell Lane. Proposed attached garage and single storey extension.

NUTGROVE HOUSE, New Street. Erection of summer house.

CONSENT

LAND AT BUTTS COTTAGE, Edge Road. Discharge of conditions 1-12 from planning permission S.10/1970/FUL

UPPER VATCH MILL, The Vatch, Catswood Lane. Erection of two bay garage in oak.

THE MILL HOUSE, Sheepscombe. Fell 1 lime tree and lop back another lime tree.

CHRIST CHURCH, Gloucester Street. Remove pipe organ

BLUEBELL COTTAGE Butt Green. New window to ground floor on southern elevation.

ELM COTTAGE, Far End, Sheepscombe. Crown reduction of ash tree.

PHOENIX COTTAGE, Tibbiwell Lane. Revised application following permission S.10/0225/HHOLD for changes to the dormers.

THE COACH HOUSE, Tocknells House. Restoration of the right hand wing, the central & left hand of the Stables. Demolition of the existing concrete garden store & create a new contemporary extension at the rear of the Stables. Re-use an anillary room in Tocknells House to create a biomass boiler room. A further anillary room is required to provide a storage solution for the proposed use of wood pellets.

BARLEY MOW, Slad. Increase existing porch to rear elevation.

THE BARN, Wick Street. Replacement of existing storm proof wooden window frames and glass with wooden double glazed units of traditional casement style.

WESTMORLAND HOUSE, Kingsmead. Proposed new dwelling.

MEISTER MASONRY LTD, Painswick Beacon. Erection of a storage building.

HILL VIEW, Butt Green. Two Storey Extension.

PHOENIX COTTAGE, Tibbiwell Lane. Revised application following permission S.10/0225/HHOLD for changes to the dormers.

NORWAY HOUSE, Far End, Sheepscombe. Alterations and extensions to existing house and erection of a house office/garden room

THE OLD VICARAGE, Damsells Mill Lane, Sheepscombe. Reinstatement top half of chimney stack previously removed.

EDGE HOUSE, The Green. Internal and External alterations.

HYETT ORCHARD, Hyett Close. Reduce 2 lime trees by approximately 30%.

WITHDRAWN

LAND AT, TIBBIWELL LANE Proposed change of use from agricultural land to site for 5 No. holiday homes with roadways and access off Tibbiwell Lane & widening of Tibbiwell Lane to provide passing bay.

Live every day as if it were your last, and then some day you will be right.

MINI-ADS

House exchange desired. My one-bedroom Local Authority sheltered accommodation end bungalow in Painswick, to exchange for a two-bedroom house or bungalow with garden in Painswick. Telephone Grace on 810808

Mr A Gander, recently bereaved, is looking for a Lady Goose with a view to marriage. Does not have to have a dowry. Replies to 812306, please.

Lloyd Loom Chair for sale. £10 or nearest offer. 813094.

Single Dining Room Chair in mint condition. Solid varnished wood, beautifully shaped. £10 or nearest offer. 813094

Delightful 27cm diameter Fine Bone China Plate commemorating 50th Anniversary of The Battle of Britain. No. 2339 of limited edition of 5000. Perfect condition with Certificate. £20 or nearest offer. 812942.

BUSINESS

Acupuncture at Painswick Surgery. For more information give Kate a call or go to www.twelverivers.co.uk. 812791 or 07775.911297

Seasonal Garden Services, with local references. Lawn cutting/strimming. Hedge cutting/shaping. Turfing, fencing maintenance/erection, general garden clearance, weed control, exterior decorating. Gutters and patios cleaned. Contact Julian Telling 07895 224863. Juliantelling@yahoo.co.uk

CV Writing. Application Forms, Interview Techniques, How to Find a Job, How to Market Yourself. University, other education or training? I am a qualified careers adviser who would like to help you achieve. 814236 or preecejennie@gmail.com

Girl Friday available for work... Do you need help over the coming months with childcare/housekeeping/dog walking/running errands/office work? If so, then don't hesitate to contact me, I'm here to make your summer more relaxing. Call Fi on 07855.957727.

MINI-ADS

Free to subscribers.

For non-subscribers and all in the Vacancies or Business category there is a flat charge of £5.00.

For all advertisers some priority may be necessary if space constraints apply.

Text maximum of 30 words + payment by cheque in advance,

to 'The Painswick Beacon', to

Joyce Barrus, Millcroft, Steppingstone Lane, Painswick GL6 6RU



A La Carte Private Hire

Tel: 01452 813268
Mobile: 07748 235164

Sandra Walklett

*Any Distance - Airports, Seaports, etc
Quotations Without Obligation*

The Personal Column

Jenny Gaugain

Birthday

Our congratulations to Dr JIMHOYLAND who will celebrate his 80th birthday on 13th August.

Weddings

Congratulations to JENNIFER HILL and ANDREW PARKER who were married on 30th July at Millstream House in Kingsmill Lane, and

to RACHAEL VARAH and THOMAS McDONALD who are to be married in St Marys church on 13th August.

Golden Wedding

Congratulations to SARAH and HYWEL JAMES who were married on 15th July 1961.

Get well soon

Best wishes for a speedy recovery to popular dance leader GEOFF CODD who broke his hip last month, this leading to the cancellation of the Victorian Ball - an annual event in Painswick since 2002.

Condolences

Sincere sympathies to the family and friends of IDA WILLIAMS of Richmond Village, ENID DE MARE and JANET MARGARET TUBBS who have died recently.

You could help Jenny Gaugain, if you would relay information about those you know and for whom a mention in the Personal Column would be appreciated.

Betty still 'works out' at 95

Betty cope of Gloucester Street celebrated her 95th birthday last month, with eighteen of her family giving her a delightful day.

The Puffins followed, four days later, by rejoicing in her company, after



twenty years of membership. Betty has been a treasured Puffin ever since her husband died, and we admire her continual determination to keep exercising to all the music, from pop to classical. We enjoy her humour and are proud of the contribution she makes to our

happiness. She is an inspiration to us all. Many happy returns, Betty.

Jenny Oakley

Printed in Gloucester for
The Painswick Beacon
by
www.inkylittlefingers.co.uk
01452 751900



THE SHARPENING SERVICE



Kitchen knives, garden tools,
..... and most other blunt items!
For a speedy turnaround

Call **Rupert Miles in Bisley**
01452 770788
milesrup@btinternet.com

All Taxation &
Accountancy Needs

We're here to help.
Forward thinking
professionals with old
fashioned values on
service and quality.



Tel: 812491 www.pricedavis.co.uk
The Old Baptist Chapel, New Street

NEXT ISSUE

Publication date

SATURDAY
3rd SEPTEMBER

Dateline for all copy
SATURDAY
20th AUGUST

for editorial attention use
beacon@painswick.net

or hard copy - preferably typed
Beacon post box - New Street

All copy must include author,
address and contact telephone
number. Photographs and advertising
art work original at 600dpi in JPEG

web site - about us
www.painswickbeacon.org.uk

for current issue and archive,
our history and aims,
the annual directory, village maps
and the current weather forecast

The Beacon Team

Co-ordinating Editor this month
Leslie Brotherton 813101
mr@lesliebrotherton.com

Editing Associates
Peter Jenkins 812724
pdj.beacon@tiscali.co.uk
Terry Parker 812191
terence5545@btinternet.com

Personal Column
Jenny Gaugain 812599
f.gaugain@btinternet.com

Diary
Edwina Buttrey 812565
em-m.buttrey@virgin.net

Feature writers
Carol Maxwell 813387
Carolmaxwell@talktalk.net

Sport
John Barrus 812942
barrusjp@yahoo.co.uk

Distribution
Celia Lougher 812624
celia@lloydstone.plus.com

Treasurer
Richard Aspinall 812379
rgrasp@tiscali.co.uk

Advertising
Joyce Barrus 812942
joycebarrus@yahoo.co.uk

Subscriptions
Peter Roberts 813271
petedr56@btinternet.com

Quiz
Charles Dorman 814548
chasdorm@googlemail.com

Directory
Carol Maxwell 813387
Carolmaxwell@talktalk.net

Production Assistant/Graphics
Emma Jackson