

The Painswick Beacon

Sine praeiudicio

Volume 34 Number 6

September 2011

Library bid approved

The Community Library in Painswick (CLIP) group has been informed by the County Council that the Cabinet Member for Libraries, Councillor Antonia Noble, has approved the bid submitted by the Parish Council which will enable the Community Library to be housed in the upper room of the Town Hall. She does however state that the initial funding for the library must await the outcome of the Judicial Review which is taking place at the end of this month. The Review is considering the legality of the proposed library closures across the county.

The provisional timetable for the work to the Town Hall, which includes obtaining Listed Building consent, will enable CLIP to move into the upper room in January. We are now planning the detailed steps which need to be taken in order to open the Library as soon as possible after that, subject to anything which may emerge as a result of the Judicial Review.

Much behind-the-scenes activity will take place between now and January. We will need to get quotations from equipment suppliers and eventually place orders so that shelving, furniture, books etc can be moved in as soon as the upper room is available. Special telephone cables have to be installed to link the Community Library to the County system. We will also have to arrange training for the volunteers without whose help we would be unable to operate the library. We have already received a heartening response and more volunteers came forward at the Wearable Art Festival.

The intention is that CLIP will be paying rent to the Parish Council for the full-time use of the upper room and will be making space available to the Tourist Information Centre rent-free.

One important step we must take is to hold a public meeting to ratify the constitution of CLIP. This has to be done before we can apply to the Charity Commission for registration as a charity. We aim to hold the meeting towards the end of the year after the outcome of the Judicial Review is known.

Peter Corley



Painswick Beacon Management

The meeting held in the Town Hall on Wednesday 17th August to hear presentations on the proposals for the future management of Painswick Beacon was well attended with more than 40 people present.

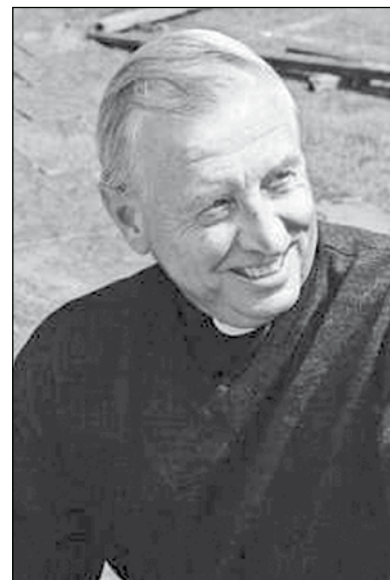
The proposals include some cattle grazing and it was interesting to hear the strong support for the management scheme expressed by Mike Hoey from the Golf Club. Jenny Phelps from the Farming & Wildlife Advisory Group (FWAG) led the presentations with a brief introduction on common land legislation. Ellie Phillips (FWAG) who is the Painswick Beacon Project Officer explained why the management of the Beacon is so important and also spoke about wildflower management and monitoring. David Allott who chairs the Painswick Beacon Conservation Group spoke about the work of the group's volunteers. Matt Stanway, from the National Trust who is the Grazing Animals Project Officer for this area explained the management of the cattle and where they are to be located. An important reason for the management is to foster the growth of the limestone grasses and herbs which only occur in a limited number of locations in England. Selina Blow who owns the Beacon attended the meeting.

Consultation forms were issued to those present and copies are available in the Parish Council Office. Responses are required by email. The form contains questions about residents' main recreational interests, skills and expertise that could contribute towards the management scheme and whether you would wish to volunteer for cattle wardening, membership of the Painswick Beacon Conservation Group, or habitat monitoring.

Volunteers from the Painswick community who would like to help to restore the grassland of the Beacon would be welcomed; help is needed for cattle wardening and habitat monitoring (full training provided), and the Conservation Group, who undertake practical management on the Beacon, are always looking for new recruits. Further information can be obtained from Jenny Phelps whose email address is: jenny.phelps@fwag.org.uk

Father David Ryan

Painswick's Catholic community has been surprised to learn that its parish priest, Father David Ryan, is to leave Stroud after fifteen years on 7th September to become the parish priest of St John The Evangelist in Bath. Father David has been a popular figure in Painswick and has made many friends within and outside of the Christian Community. That friendship is reflected in the invitation by the Church of England community to hold a farewell service in St Mary's Church which was scheduled to take place at 7.30pm yesterday (Friday) evening. Father David will celebrate his final Mass in Painswick this Sunday at 8.30am to which a warm invitation is extended to all members of the local community. Father David's successor is Father Tom Gunning.



On other pages this month: annual Clypping Service, an apple day, jolly stomping, marathon Bible reading, promises auction, local history teaser, Painswick Singers-test driven, flying high, annual horticultural show, village agent, more wearable art, sports reports, August gardening, Penny Grayson, art classes, church rooms renewed, organ transplant.

PARISH COUNCIL NEWS August 2011

Reports upon meetings of the Parish Council cannot help but be selective, if only because of space constraints. We try to highlight points of wide public interest, based upon what we see and hear. The full minutes of Council and committee meetings are available for scrutiny at the Council's office.



Parish Council News

As there was no Parish Council meeting in August and therefore no Beacon report, the Clerk to the Council Roy Balgobin has provided the following update.

Parking Review

The District Council is undertaking a Parking review of all its parking areas, including Stamages Lane Car Park. The Parish Council will consider its response during its September meeting. Members of the public are welcome to make comments by accessing the on-line questionnaire at www.stroud.gov.uk/parkingreview

Manorship meeting

Several members of the Parish Council recently met with members of the Blow family to discuss various topics as

detailed below.

Manorship organisation. It was agreed that the Manorship would provide the Council with a detailed breakdown of the Manorship's structure.

Manorship maintenance. It was agreed that the Manorship contributions to the cost of the Parish Council's maintenance of Manorship Land would be reinstated with an amount to be confirmed for the current financial year and an annual sum to be paid to the Parish Council effective from 1st April 2012.

Mop Tree access. Selina Blow, who owns Painswick Beacon, told the meeting that she could not agree to grant the Parish Council a right of vehicular access to the Mop Tree field across her land.

Catbrain Quarry. The Parish Councillors expressed concerns about the work being carried out at Catbrain Quarry.

The meeting was told that the Manorship was to have a meeting with Meister Masonry in mid-September.

Allotments. It is intended that the Council awaits the outcome of its application for a Certificate of Proposed Lawful Use and then calls a meeting of all potential allotment holders to seek their views on the way forward particularly in the light of the Painswick Manorship's decision not to allow the Council vehicular access to the Mop Tree field across Manorial Land.

Big Community Offer

The Parish Council awaits the County Council's written confirmation that its bid for funding to effect the modifications to the Town Hall necessary to house the Community Library in the upper room has been approved.

Car parks District-wide review

Stroud District Council has set in train a review of its many car parks, one of these being ours in Stamages Lane. Their publicity includes mention of the following:

'The SDC operate 34 car parks across the district. Some are free to park in, whilst others are not, but all have time restrictions which are enforced. It has been 6 years since the last car park review. Travel and parking requirements have changed over that period, as has the economic climate. We are undertaking this review now, to ensure that SDC's off-street parking (public car park) provision takes account of the needs of communities, whilst trying to balance the financial pressures that the council faces on the delivery of its services. This should ensure that we provide value for money for local taxpayers.

The overall purpose of the review is to evaluate SDC's role and policy in owning and managing public car parks in order to deliver value for money for the council tax payer, and more specifically:

1. to consider whether we should continue to own and manage car parks and if so, which ones.
2. to review the costs of owning and managing car parks and look at the business case for introducing charges in more areas of the district.
3. to make recommendations for alternative uses/disposal (if appropriate) for any car parks which we believe we should no longer own and/or manage.'

Their consultation is to help inform their decision making. Among many groups and organisations directly invited to comment our own Parish Council will forward its observations by the end of September. However, anyone wishing to contribute can respond via the on-line questionnaire, and the link to access the questionnaire www.stroud.gov.uk/parkingreview Additional data is there to inform those interested.

Local NHS talk

Nicola Hayward, Practice Manager at The Surgery in Painswick, will be giving a talk and answering questions about the National Health Service in the Town Hall on Tuesday 13th September between 7pm and 9pm. At this informal meeting Nicola will discuss a number of issues including what services we currently have in Painswick and the medical services available to us in Stroud and Gloucester. If there is anything you would specifically like Nicola to talk about, do please let her know at the surgery.

Annual Clypping Service

The annual Clypping Service at St. Mary's takes place this year in the churchyard on Sunday September 25th. This will be a service on traditional lines where the church is embraced by the congregation while singing the Clypping hymn. The afternoon starts at 3pm with a procession around the churchyard led by the Gloucester Band of the Salvation Army. The preacher this year is the Reverend Tim Hastie-Smith. At the end of the service all school children will be able to claim a Clypping bun and a 50p coin. After the service at about 4pm there will be a teddy bear parachuting event from the parapet of the tower. For a modest donation to charity anybody with a brave teddy bear will be able to have the bear dressed up in a parachute and watch how far it drifts across the churchyard. There will also be various stalls including Fairtrade provisions. Teas will be served from the Church Rooms. All are welcome to join in.



- **Feeling the SQUEEZE?**
Get ready for Summer!
- **Lose weight and feel great!**
Ask about our new FREE service!

THE PAINSWICK PHARMACY
NEW STREET TEL: 01452 812263

JK's Restaurant
@
Painswick Golf Club
for
**Functions, meals
and
events**
Golf membership available
Supporter of local suppliers
Open to non members
Tel: 01452 812180

Penny Grayson

Congratulations to Penny Grayson who has qualified for the Triathlon Age-Group Championships in Beijing this September. Penny, who is the daughter of Rob and Steph Grayson from Greenhouse Lane, is currently serving with the Royal Air Force as a helicopter pilot. She is a keen sportswoman and has just completed her first Ironman event in July, coming second in her age group. Penny regularly represents the RAF in Triathlon competitions and will be looking to compete at her very best in Beijing where she is swimming 1500m, cycling 40km and running 10km. Having served in Iraq and Afghanistan, Penny is due to take command of the Search and Rescue Flight at Wattisham Airfield, Ipswich next year.



Christ Church Organ Transplant

One of the problems which arise with the closure of any church is what to do with the furniture and integral features which no longer serve a purpose. The organ can be one of the most difficult objects to deal with, but Christ Church's organ is to have a new home. It is to be installed in the Parish Church of St Mary, Deerhurst. It has been painstakingly dismantled, every part and piece carefully labelled and stored, and will be eventually re-assembled next year in Deerhurst. Generally in very good condition, one or two minor repairs will be carried out whilst its new location is prepared. St Mary is a minster church, the oldest in the diocese, and one of the most complete buildings to survive from before the Norman Conquest. It contains many excellent Anglo-Saxon architectural features and sculpture, the details of which are very rare, and some notable medieval stained glass. It is gratifying to know that the organ from Painswick's historically significant Christ Church is going to such a beautiful and important place of worship.

Carol Maxwell

Apple Day Saturday 8th October



We have changed the date of our Apple Day and Harvest Lunch to Saturday 8th October. Keep your eyes out for posters as this should be a great time to stock up on delicious local apple juice from our own Painswick trees and get together for a rustic Harvest lunch. Heritage trees, cider making, wildlife hunts, apple bobbing, apple fritters, toffee apples, apple pressing. Do you have a fruit tree that you struggle to pick or goes to waste? We will be collecting apples for pressing in the week beginning the 5th September for a pressing and bottling session prior to the apple day. Please ring 812879 if you would like to have your apples collected.

Greg and Iris McCormick

Flu vaccinations

Our annual immunisation programme to protect vulnerable patients from the influenza virus will commence in October this year.

All the doctors at Painswick Surgery strongly recommend that everyone over the age of 65 is vaccinated against influenza. We would also suggest that anyone who suffers from diabetes, asthma/lung disease, kidney/liver/heart disease and patients who are immunocompromised are also vaccinated as they are especially at risk.



We will therefore be holding clinics on Saturdays 1st, 8th, 22nd and 29th October here at the surgery from 8.30am to 12.30pm. Please contact the surgery to book a convenient appointment – please don't wait for a letter inviting you to come in – we would like as many people as possible to take up this offer.

We won't be organising 'flu clinics at the surgery during the week in order to reduce congestion in the car park.

Nicola Hayward Practice Manager

Beacon subscribers		
as at 21st August	2011- 2012	This date last year
New or renewed after lapsing	69	95
Renewed from last year	482	450
Total including postal	551	545

Subscriptions

We print and distribute 1550 copies of the Beacon in most months.

If you have overlooked subscribing please leave yours at the Post Office or send to:-
Peter Roberts Long Finals, Stamages Lane, GL6 6XA

PAUL A MORRIS
GENERAL BUILDER LTD
 EXTENSION: RENOVATION: STONEMWORK
 KITCHENS: BATHROOMS
 PATIOS: DRY-STONE WALLING
 PLUMBING: ELECTRICAL WORK:
 PLASTERING
 paulmorrisbuildersltd@gmail.com
 01452 814524 or 07818 087375
 Federation of Master Builders
 Over 20 years experience

DAVID ARCHARD
 in association with
Philip Ford & Son
Funeral Directors
 Part of Dignity plc. A British Company
Private Chapels of Rest
24 hour Personal Service
 Dirleton House
 Cainscross Road Stroud
 01452 812103 or 01453 763592

JOE REED
General Plumbing
 And Minor Domestic Electrical Work
07967 742601
 City & Guilds and Part 'P' Registered
 For more details please visit:
 www.joereed.co.uk

In line

"Line Dancing has been popular in Painswick for over twelve years now, and it is high time we explained to others just how much it is enjoyed", says Julie Cole, the teacher and inspiration each week when they meet at the Town Hall.

Julie reminds us that "It is a form of dance which covers many genres of music - from jazz to ballroom, funk to Irish, Latin, Pop, Waltz, Rumba and Country. A wide variety of songs are used so there's something for everyone. Our local friendly classes ensure that everyone is made welcome and is a fun way to keep both the body and mind active, suitable for all ages and abilities. As no partner is required the opportunity to dance is preserved for those keen to return to the dance floor! Basic steps are taught at a sensible slow pace so you can build up gently until you are stomping with the best of them!"

She adds "Line Dancing is a brilliant workout, a low impact exercise and a cardiovascular workout rolled into one. You can burn off up to 300 calories in one 60 minute class. It's also a great social activity, which has health benefits too. You are getting out and meeting people and it is designed for beginners and no need to book in advance, no need to wear special clothes, just 'step' along and have a go here or at a number of venues in the Stroud area". A new class starts 12 noon to 1.00pm on Thursday 15th September onwards, and further information can be had from Julie Cole on 01453.752480 or at www.jollystompers.webs.com

Long-time 'stomper' Liz Fisher adds, "As someone who has done line dancing in Painswick with Julie for over 10 years, I'd like to endorse her comments about our classes. We are a very happy group with a lot of chat and laughter. The dancing is very well taught, building up the steps gradually and all done to a good variety of music. It is a very enjoyable form of dance and is an excellent way to exercise. Do come and join our friendly class on Thursdays in the Town Hall and have some fun".



Art classes



I would like to let Beacon readers know that new art classes resume in September and October in Painswick. A range of classes are on offer including drawing and painting in both oil and water colours, some tailored for the beginner others for those with experience. I also offer support for GCSE /A level and children. Classes are held in the day and evening. If you would like to know more please telephone Jane 01452 812176 email garbetts@hotmail.co.uk

The Church Rooms Renewed

If you have not seen The Church Rooms recently please go and have a look at them! Both the large Assembly Hall and the smaller Derek Hodges Room and the two entrance halls and cloakrooms have been completely redecorated and are now fresh and clean. In addition an essential and efficient heating system has been installed, sixty comfortable chairs have been sponsored and purchased and the two toilets have been replaced.

Already most of the church meetings and socials and charity events are taking place there and many clubs are meeting there regularly. An increasing number of private people are using the new facilities for birthdays, family celebrations, baptisms, weddings, and funeral teas. Have you considered using The Church Rooms for your family or club events?

The Assembly Hall will take a maximum number of 70 people for concerts, plays, parties or other gatherings. The Derek Hodges Room is being used for more intimate events or committee meetings for up to 20 people.

Bookings can be made for either or both of the rooms at the Benefice Office at the Lychgate. Telephone 01452 814795. The Assembly Hall can be rented for £ 20 for a three hour session or The Derek Hodges Room for £12 a three hour session.

When individuals sponsored the chairs they were thanked and given a copy of the booklet on the history of the Church Rooms written by Derek Hodges and Alison Robinson. This is a very interesting read and copies can be purchased in St Mary's Church or at The Benefice Office for £2.

We hope to see many of you enjoying yourselves in The Church Rooms in the coming year. You will be very welcome!

Ralph Kenber

Chairman of The Church Rooms Committee.



Centenary Year



GODDARD'S GARAGE

Cheltenham Road Painswick

- Full servicing & repair facilities
- MOT preparation & repairs
- Private hire - local or long distance
- Petrol/ Diesel/ Tyres/ Exhausts
- Paraffin/ Coal/ Calor Gas
- Car valeting
- Air conditioning

Centenary Year

Personal attention for your car

01452 812240

Tree Surgery

Sapling to Veteran Trees
Fruit Tree Pruning : Planting
Stump Grinding : Seasoned Firewood
Fully Insured : 25 years experience



Clare Overhill & John Rhodes

Painswick 812709

Landcare Services

6 Pullens Road Painswick

LAWNMOWERS

- SERVICED
- SHARPENED
- REPAIRED

ALSO:- RIDE-ON MOWERS, CHAINSAWS, ROTAVATORS, STRIMMERS, HEDGE-TRIMMERS ETC.
FREE COLLECTION AND DELIVERY

CHELTENHAM MOWER SERVICES

01452 616169

Unit B3, Nexus, Hurricane Road
Gloucester Business Park, Gloucester GL3 4AG
Visit and Buy On-Line at
www.mowers-online.co.uk

Reading the Old & New Testament from the King James Bible

Wednesday 28th September, finishing Sunday
2nd October
in Cranham Church

Teachers & children from Cranham School hope to start the reading off at 3.15pm on the 28th September. The reading will be continuous, day & night. After the reading has finished there will be a short service to which all are welcome, time to be advised!

The reason?

- To celebrate the 400th anniversary of The King James Bible.
- To celebrate the beautiful language of this version of the Bible.
- To raise money to keep our Church in good order for years to come

We need lots of people to volunteer

As at today, 24th August, **117 people have volunteered to read**, ideally it would be good to have **180 volunteers** so if you would like to take part please do get in touch very soon – we will have a slot for you to fill !

Your reward will be to take part in something really quite special.

We hope that the people reading and/or listening may like to donate two pounds or so (once, not each time they read!) towards the up keep of St James the Great.

Please consider volunteering yourself and ask your friends and relations if they would like to take part.

This unique opportunity is open to anyone

If you would like to take part, please phone Phil/Sue Stick. 813407 or 07748 268 269. email: oakfield100@btinternet.com



Gloucestershire Local Involvement Network (LINK)

Information Event at Richmond Village

As reported in the August Beacon issue, Gloucestershire LINK, an independent, voluntary body, is holding a public event in the Auditorium at Richmond Village on Thursday 29th September between 12noon and 2pm with a light buffet provided by Richmond. It's an opportunity to hear more about the LINK's work in influencing and improving the way local health and social care services are planned and delivered.

Why not come along and talk to members about the sort of activities they get involved in, as well as tell us what's working well and what isn't locally? Following the event, attendees will also have the opportunity to look around the village. For more details visit www.gloslink.org.uk or telephone Christine Welsh on 01452 528491 or by email, christinew@gccc.org.uk

Cotswold Care

Painswick shop urgently needs donations

Business is brisk at the Cotswold Care Hospice shop in Bisley Street but donations through the door have been very low of late. No doubt a lot of people are away on their summer holidays but if they do happen to be at home, any clear-outs would be gratefully received. We especially need books, clothes and bric-a-brac. The shop is open between 9am and 5pm Monday to Saturday. You can contact me for further details on 814417.

Thanks heaps in advance.

Adele Lang
Manager

Cotswold Care Hospice Shop,
Painswick

BEACO-DOKU

We offered more garden or wild flowers last month, and **T-U-L-I-P-S** was the challenge.

S	P	T	L	I	U
U	I	L	T	P	S
P	T	U	S	L	I
L	S	I	P	U	T
I	L	S	U	T	P
T	U	P	I	S	L

With comparable letters to those used last month, why not try **L-U-P-I-N-S** this time round.

Maybe let us know if you succeed?

	U		I		
N		I	S	U	
				I	
I	L				S
	N	U			I

W D Horne
(formerly Horne & Kilmister)

General builders and stonemasons

'The complete building service'

- Extensions, renovations & new build
- Garages
- Roofing
- Hard landscaping

07743.194212 01453.872329

Call today to arrange a visit.

Resthaven at Pitchcombe

Modern nursing home overlooking the beautiful Painswick valley. Offering long-term residential care & daily / weekly respite stays.

Resthaven, Pitchcombe, Stroud, Gloucestershire GL6 6LS
Tel. 01452 812682
www.resthavenpitchcombe.co.uk

LEIGH YOUNG

Established solicitors in Stroud offer a caring bespoke service:

- Wills, Trusts and Probate
- Family / Matrimonial
- Property / Conveyancing
- Litigation / Mediation
- Company / Commercial
- Employment / Compromise

The Old Court Offices, Beeches Green Stroud, GL5 4BJ

Tel: 01453 762114

contact@effectivesolicitors.co.uk
www.leighyoung.co.uk

Neighbourhood Watch

PC Beard of the Stroud Safer Communities Team circulated the following message to local residents on 25th August.

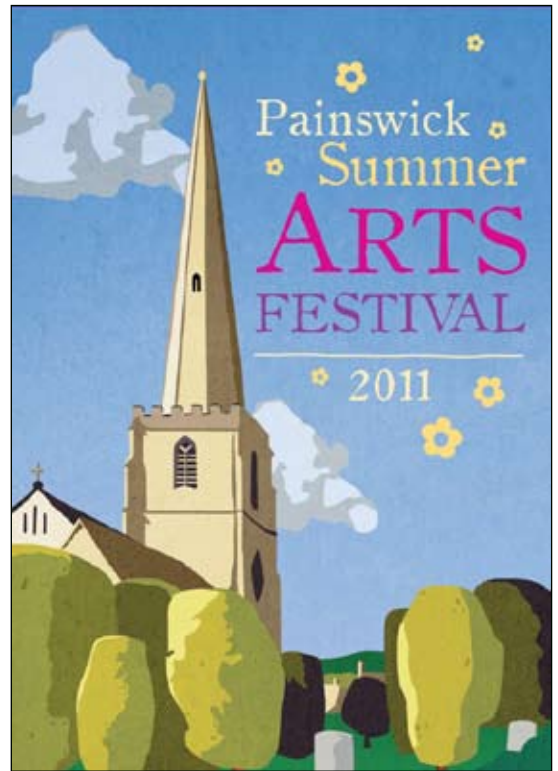
Please be aware that there have been numerous calls made to people today in the area, pertaining to be from your bank. The person on the phone has stated that your bank card is about to expire and you need to attend the bank to obtain a new one. They can then request your card details and advise you to cut up your old card. This is a scam. Please remember and advise all elderly relatives and neighbours that your bank will never ask you for any account or card details as they will already have that information.

The message came from the Gloucestershire Constabulary whose non-emergencies number is 0845 090 1234 and is charged at the local rate. You can visit the Constabulary website at www.gloucestershire.police.uk



Painswick Summer Arts Trail

This Painswick Arts Festival event took place on Sunday 28th August. The very successful event brought many visitors to Painswick where they had the opportunity to explore the village and find a dozen homes and studios whose doors were open for the artists to show and share their individual work. The event was kindly supported by the Royal Oak Inn.



Lost & Found

Found bracelet

We have found a gold link bracelet outside the Best One shop in St Mary's Street on the road in the parking bay. Please call 814622.



•painswick osteopaths.

Paul Stamp D.O.
Helen Froggatt D.O.

Tel: 01452 301748
Painswick Surgery, Gyde Rd. Painswick

- Structural
- Cranial Osteopathy
- Sports Injury
- Migraine/Whiplash
- Parking Available

PAUL COOKE

COMPLETE GARDEN MAINTENANCE

**MOWING HEDGE CUTTING
PATIOS PONDS**




Free estimates
Phone 01452 813738
Mobile 07702 912392

Established over 20 years

A happy marriage is a long conversation which is always too short.

Promises Auction

An auction of promises will be held at Sheepscombe Hall on Friday 30th September starting at 7 for 7.30pm. Auctioneer: Craig Carrington. Entry £3 to include catalogue and a glass of wine. Bar and nibbles. Proceeds to the Friends of Sheepscombe School and Project Heartbeat.



P. L. ALLARD 

www.allardbuilders.co.uk

Specialists in Period and Listed Property

- Renovations
- Refurbishment
- Cotswold Stone Tiling
- Roofing Services
- New Build
- Internal Work
- All Work Considered

01452 812840
telephone & fax 01452 814278

p.allard@tiscali.co.uk

2 Gloucester Road, Painswick, Glos, GL6 6RA



three gables
dental, holistic + beauty centre

- ▷ PREVENTATIVE AND COSMETIC DENTISTRY
- ▷ BEAUTY THERAPIES
- ▷ FACIAL REJUVENATION

All in a relaxed and friendly environment with early, late and Saturday appointments available. On-site parking also available.

LET US BRIGHTEN UP YOUR SMILE

cheltenham rd painswick glos GL6 6XN
01452 814427
www.thethreegables.co.uk

TwelveRivers

Traditional acupuncture
at Painswick Surgery

Kate Tenney
Lic Ac BA(hons) MBACc
Tel: 07775 911297
www.twelverivers.co.uk

Letters

The inclusion of letters, maximum 150 words, in these columns does not imply that the Beacon committee endorses the views expressed, or otherwise.

Noticeboard

Pat Burrows writes:

Some dogs are very particular. Quiver finally refused to walk past the disgusting, filthy noticeboard outside the Library building, which is supposed to entice visitors into enjoying the amenities of the village. Even with his glasses on he could not read it beneath the dirt. Julia his mistress had no choice in the circumstances but to tackle the sign with a bucket of soapy water and some energy. Tourists can now be seen perusing the map with interest and Quiver has resumed enjoying his walks. Julia has acquired something of a halo in my eyes as I have been irritated by that sign for some months. I myself waited for somebody else to do something but Julia has obviously heard of the Big Society and acted. I am very impressed and Quiver will always get an extra pat from me.

David Batty writes:

This is my second letter to the Beacon this month but sadly the first will never be printed. It thanked Selina Blow for her recent initiatives and generously allowing the Parish Council access across her land to the allotment site on Mop Tree Field. Mysteriously, I now hear that permission may be rescinded. That seems strange.

Earlier this week I attended a meeting to hear a call to help with the great plans Selina Blow and English Nature have for conservation on the Beacon. This can only benefit residents and visitors to our lovely village. So how could it be that the one thing that the whole village has been working so long to achieve may now be put in jeopardy? Let's hope it is all a misunderstanding and that the Parish Council will be able to maintain the Mop Tree Allotment site properly, for the benefit of the whole community.



Tired PC

Poor Performance
Does it need fixing?
Call IDZ for advice
and support.

All hardware and
software repair, virus removal,
upgrades and new installations.
Broad experience,
home, office, etc.

Local, friendly service
(01452) 812733



Local History Teaser

A rather grand group waiting to set off. But, what and when was this? Can you explain the picture?

Answer in next month's Beacon.



... and the Local History Society

The first meeting of the Local History Society's new season takes place on Tuesday, 20th September. David Mullin will give a presentation on Stroud's museum, the Cowle Museum in Stratford Park, with a particular emphasis on the artefacts from Painswick within the collection. There are a surprising number, running into hundreds, of such pieces and this presentation will appeal to a wide range of interests. Croft School, 7.30pm – everyone is welcome.

Carol Maxwell

Instead of
counting your
days, make
your days
count.

JOHN DANDY

Established 1969 **MOTORS**

- ➔ MOTs, Servicing & Repairs
- ➔ Free collection & delivery service
- ➔ Proprietor Painswick resident
- ➔ Free courtesy car
(subject to availability)

Goodridge Avenue, Gloucester GL2 5EA
☎ (01452) 527340

QUALITY & VALUE WHERE IT COUNTS



Home of the Modern Day Puppy Dog Pie



LIVE MUSIC – SATURDAY NIGHTS
LET'S GO FORAGING with Rupert Burdock
9th Sept @ 9.00am - £19.95 Includes lunch

Cheese, Wine & Cider Festival
24th Sept – 4th October
We are Champions of Gloucestershire Food & Drink

01452 813129
Christmas Parties & Xmas Day
Book your Table Now!



Professional Ironing, Dry cleaning, Laundry & Repairs/Alterations

FREE
Collection
& Delivery



Tel: 01452 740129
www.ironeasy.biz

DASH - Delivering Aid to Stroud Homeless.

Over the course of the summer, people have kindly continued to save their small change (5ps, 2ps and 1ps) to help Marah, the charity working with the homeless and marginalised in Stroud. By last week this had amounted to £85, bringing the total sent to Marah in the last 2 years to £550. The money is used to help in the sudden emergencies which can arise - a bus trip to a hospital appointment, a new pair of socks etc. So please keep saving those small coins - Frances Watson (812 071) or Alison Robinson (812 286) are happy to come and collect your contributions if they get too heavy for you to bring to them!

Marah also tries to keep emergency packs of basic foodstuffs for those who suddenly find themselves destitute and for this they are appealing for packs of dried skimmed milk and tins of fruit, rice pudding or chopped tomatoes. There are collection boxes for these items at the back of St Mary's Church and in Murray's Estate Agents.

And, as always, we are grateful for your generosity.

Alison Robinson, on behalf of Dash

The Painswick Singers - Test Driven

The Painswick Singers were pleased to be invited to take part in the Painswick Musical Arts Festival and very pleased that Painswick's budding musicians should have been given such a good opportunity to put themselves on show, because public performance is such an important spur towards the achievement of greater things and to have done so well is very gratifying to the organisers - very well done them and you.

The Singers thought it was a good idea for those of us who hum or sing when going about things but have never ventured to join a choir, to be given the opportunity of doing just that, so we offered this in the form of a workshop. We were really delighted so many decided to join us for a 'Test Drive' and, judging from your reactions you enjoyed a good sing too, though without enough music to go round you would have found it difficult to keep up with those of us who had seen the music before. If you did not know you had a diaphragm, where it is or what it can be made to do, I think you may have discovered how it is that singers are able to produce so much sound from just a single breath.

So pleased was Andrew, our conductor, with your responses that we now offer more test drives with us (at no cost or obligation) when we start to rehearse our autumn concert. This will be Monday 5th September at 7.30pm, and Mondays thereafter, when he will invite you to nibble again at the fun we enjoy, only this time with music copies for you to sing from.

Maurice Maggs

Business, club, society, service, agency?

Directory 2012 - it's your call

The Painswick Directory is delivered every year with the December issue of the Beacon. It is free of charge. Providing a very valuable source of information for both residents and our visitors, it is also, of course, of great benefit to those businesses, services, clubs etc which are included in its pages. A copy is posted on our website too which continues to receive 'hits', not least from people moving into the area.

If you run a business, service, society etc it is in your interest to ensure that the relevant and correct details are entered in the next edition. We depend entirely on the information given to us by club secretaries, business proprietors and so on, and need these details as soon as possible if you wish to be included in the 2012 edition. Inclusion costs you nothing.

If you are already in, please check the details and let us know if there are any changes to be made. Out-of-date information is most irritating for all concerned. If you wish your entry to be removed you should let us know as soon as possible.

This is a free community resource and it is important that it is up-to-date, comprehensive and accurate. Please send your details via the Beacon's email address - beaconpainswick.net - or to Carol Maxwell at carolmaxwell@talktalk.net or post in the Beacon box in New Street as soon as possible.

Carol Maxwell

Gloucestershire Gates

Hand-crafted Cleft hardwood Gates and Other Items. Made in Pitchcombe to order, using traditional tools and methods. Commissions great and small undertaken. Gates of all sizes, fencing, benches, arbours, trellis, stools, chairs etc

For more information call Nick on 01452 813246 www.greenwoodcraft.co.uk

Large and small projects

Lakes- ponds - water features
Planting - tree work
Fencing - decking
Stonework - patios
Groundworks - drainage
External plumbing
Traditional building work

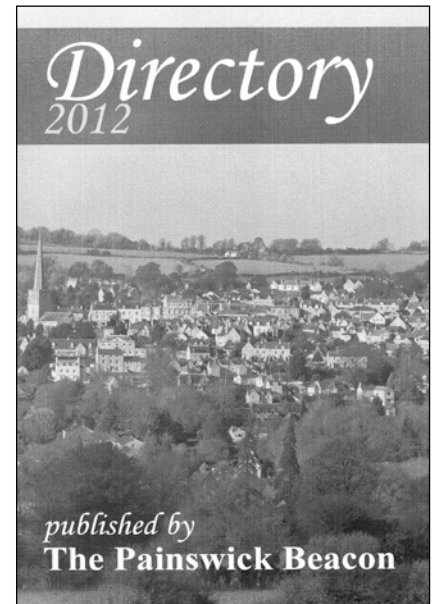
Passionately undertaken

BEN LIVING
B.L.C.
CONTRACTORS

Please contact Ben on -

077 02 984711
01452 812036

enquiries@bhc.uk.com
www.BLC.UK.COM



INSIDE OUT cleaning services

Professional Carpet, Rug, Upholstery & Stone Floor Cleaning
Carpets dry in 30 minutes

Craig Lindsey
01453 548152
07890 282535

Craig@insideoutcleaningservices.co.uk
www.insideoutcleaningservices.co.uk

NCCA MEMBER
FSB MEMBER

Cardynham House BISTRO

Come and enjoy our Romanian atmosphere with Catalina and Marian

Speciality and saver menus

01452 810030

ELECTRICAL AND ALARM SERVICES est. 1990

Rewires, extra lights, sockets, 17" edition consumer units, showers etc fault finding, burglar alarm systems, CCTV installations, we also take over services of existing systems.

For a prompt reliable friendly service contact **Steve Gallagher**
07836 273768
01453 791209
website: eas.me.uk

DOMESTIC INSTALLER

Community Lunches

The Community Lunches begin again on MONDAY 3rd OCTOBER at ASHWELL centre, off Hyett Close, off Churchill Way - from 12noon to 1.15pm each Monday lunchtime for 10 weeks.

Last season – our first at this new venue after 42 years at Christ Church hall – proved most successful. We raised £1400 which was distributed to the local charities, the Marah project based in Stroud, and Cruse Bereavement counselling (Gloucestershire) – as well as Christian Aid. This coming session the charities to be supported are Stroud Mencap Homes Foundation who are now adapting their buildings to meet the needs of their aging residents, and Painswick Playgroup, as well as Christian Aid.

The committee would like to thank Andy & Arthur Lock who are standing down from running a session, after so many years involvement including Arthur acting as Treasurer. Also thanks to the Tennis Club who feel unable to continue to run a session. Thanks too to Anne Leoni who was so instrumental in finding this new venue when Christ Church closed – but is now leaving Painswick.

We are in need of another group willing to run one Monday session – and would welcome any offers of help. Please phone! It is not too arduous providing home-cooked vegetable soup, fresh bread, butter & cheese. Do come along & support this village “institution”!

Rita Bishop 814205 David Linsell 812464

Flying High



Can it be summer? Yes, here comes the sun sharply profiling young buzzards wheeling high, at once grand yet graceful, but mewing forlornly of in-sweeping, prey-loaded parents. Understanding bird behaviour better, is the club focus from Michaelmas, requiring erudite guidance costly to obtain. Thus the repair of Committee to Aston Down, an elevated site suitably symbolic in aspiration but more mundane at car-boot level! Thanks to most generous, local donors, sales raised £150 for the cause.

This must be the final reminder for those toying with the idea of joining the club's annual safari, wholly or in part (Mon to Wed 26th-28th September) to Blenheim Park and the Thames. New participants would be extremely welcome. Further information and booking is available through 813094.

Martin and Wendy Addy

Painswick Players Come and join us!



The outstanding success of July's production (full houses on all three nights and rave reviews!) has encouraged us to build on the enthusiasm this has created among the cast and crew – and among members of the public, several of whom expressed a desire to take part in future Painswick Players activities. Especially pleasing is the significant number of new members who have joined us following our theatre workshops and play-readings. They have found that there's a role for everyone – from directing a play or acting to delivering leaflets or making the tea during rehearsals: all tasks being of equal importance and equally rewarding.

The Painswick Players Annual General Meeting, which is open to everyone, is to be held in the Cotswold Room at the Painswick Centre at 7.30 pm. on Tuesday 20th September. This will be a great opportunity for you to find out more about us and to chat with members over nibbles and a glass of wine. As with all the Painswick Players activities, informality and enjoyment are the order of the day!

Our monthly play readings begin on Tuesday 27th September in the Green Room at the Painswick Centre starting at 7.30 pm. We will be reading the two one-act plays that are to be performed at the end of January next year. Alternative Accommodation by Pam Valentine is a light-hearted play about 'what's best for mother - who is not getting any younger' but, unknown to the family, has plans of her own. By contrast, the comedy in The Bear by Anton Chekhov derives from the characters' lack of self-knowledge and the development of their courtship sweeps us along at a farcical, cracking pace!

Auditions for both plays will be held in the Hall at the Painswick Centre on Tuesday 4th October at 7.30 pm. For further information, contact the director George Krasker on (01452) 864175 or email krasker@gmail.com.

There's so much happening! Why not come and join us? You will be made very welcome...

Steve Friar

Ashwell House Day Centre for Senior Citizens An Appeal for Volunteers

The Day Centre provides a framework for those seeking company and fellowship in a relaxed and friendly environment. The small team of volunteers who manage the Day Centre are seeking to enlist additional voluntary support and help.

The Centre operates every Wednesday from 10.30am to 3pm. and provides morning coffee, lunch and tea in addition to a variety of activities including arts and crafts, board games and outings.

Additional voluntary assistance in the management of the Wednesday session will be warmly welcome on a regular or flexible basis.

Further information about the nature of the duties may be obtained from;

Etelle James: 813358 Ann Kenber: 813259

NEWSPAPER & MAGAZINE DELIVERIES

Six day week deliveries Monday to Saturday
Voucher schemes accepted

Approximate delivery time 5.00am - 7.45am
More accurate delivery times are available upon request

For more information or to place any order please contact



Andy Christmas

07719.998471 07765.232122 07775.199171

PAINSWICK ELECTRICAL SERVICES

- ✓ 40 years' experience
- ✓ 24-hour Emergency Service
- ✓ All electrical work undertaken
- ✓ Inspection & Testing
- ✓ Free Estimates
- ✓ PART P REGISTERED



Mike Turner

01453 758342 07850 784899



Brinkman Building Ltd.

"Your local professional building service"

Building, Plumbing
& Carpentry work
Kitchens & Bathrooms
designed and fitted

01452-812924 (Evenings)

07796-440101 (Mobile)

www.brinkmanbuilding.com

Neil Webster's Secret Room

Many in Painswick will remember Elizabeth Webster, well-known novelist, teacher and musician, who died in 2007. Her husband, Neil, who died in 1990, will also be remembered, but now he too can be acknowledged as the writer of a book, one of considerable significance. *Cribs For Victory: The Untold Story of Bletchley Park's Secret Room* has been published posthumously, the result of determined efforts by his daughter Joss who believes the book clearly reveals much of the secret code-breaking process involved with Enigma at Bletchley Park during World War II.

Born in 1906, Neil won a scholarship to Cheltenham College and went on to study Logic at Oxford University. He was a brilliant mathematician and classical scholar. He spent some time working at various jobs in America in the 1930s then returned to England where he worked rather unsuccessfully as a literary agent. He married Elizabeth in 1939 and in 1940 he was recruited to MI8 where his considerable mathematical and logical skills were put to use.

Cribs For Victory covers Neil's life during his involvement in Intelligence, ending in 1946. The Fusion Room was the central unit where decrypted German messages were compared with other data in order to build a picture of the enemy order of battle. Major Neil Webster was a key member of the team. He was liaison officer between signals intelligence and cryptographers, involved in the search for 'cribs' – short pieces of enciphered text which could break the whole cipher. The book describes this search in detail.

Neil began work on the book in 1976 because he wanted an accurate and full account to be produced. The Websters moved to Painswick in 1980 and the book was eventually completed in 1985. To his great dismay, permission to publish was withdrawn by GCHQ – the book was still considered to contain sensitive information.

After Elizabeth's death in 2007 Joss decided to do something about her father's book. After much negotiation permission to publish was at last granted in 2010. There remains the question of why it took so long. Joss believes the book is too close to the real truth about how Enigma was broken, and the inner workings of British intelligence. It is certainly a fascinating read. *Cribs For Victory* by Neil Webster, edited by Joss Pearson, is available from Stroud Bookshop or it can be ordered direct from the publisher, Polperro Heritage Press, Clifton-upon-Theme, Worcs WR6 6EN, www.polperropress.co.uk, or from Amazon and WH Smith online.



Carol Maxwell

Painswick Women's Institute Ladies



At their July meeting, Painswick W I ladies were given a first-hand view of the way in which auctions are run and behind-the-scenes working of an auction house, when James Taylor from Stroud Auctions spoke extensively and knowledgeably, not only about selling antiques themselves, and with the additional bonus of a wealth of amusing anecdotes and professional insider information. He also explained how the internet has revolutionised selling antiques at auction, since it gives prospective buyers the world over, the ability to see and buy from their own home or office. However, this has also caused the prices of antiques to increase considerably, as foreign buyers are able to outbid those in the sales rooms. He also spoke at some length on how 'fashion' in antiques has changed over the years, so that, for example, the pretty porcelain tea-service that Aunt Mildred gave to a couple for a wedding present 30 years ago is now worth less than it was then, and likewise, as many people have already discovered in recent years that 'brown' furniture, so in demand in the eighties and nineties, is now of very little interest to buyers.

W I members had been asked to bring items of interest to the meeting for James to value or identify. This produced an interesting collection of small objects, but sadly, nothing found 'under the bed' or 'for 5p at a car boot sale' that would rock the antiques world at a future sale. The next W I Meeting will be held on 27th September, when a talk entitled 'Medical Women Through the Ages', will be given by local GP, Jenny Barraclough.

Maggie Drake

Painswick Educational Trust

The Trust will be meeting again shortly to deal with applications from young people resident in the Painswick area for financial help with their studies and apprenticeships. Previous successful applications have been made for money towards books, computers, catering equipment, course fees and educational trips. If you are interested in finding out more, please telephone Joy Edwards on 812588 or Michael James 812646 for an application form.

Kopend Creations
www.kopendcreations.co.uk



Flowers for all occasions

Weddings - Funerals- Parties - Gift Bouquets
Flower Arranging Classes - Anniversaries- Births
Fruit Baskets - Pamper Baskets

Please contact us for further information
Delivery charges may apply
Available 7 days a week - 9am - 6pm
Eastington
paul@kopendcreations.co.uk -
T: 01453 826969 M: 07742 933331

AN INDEPENDENT,
FAMILY RUN BUSINESS
MICHAEL GAMBLE
FUNERAL DIRECTORS LTD

A CARING AND PERSONAL
SERVICE DAY AND NIGHT
PRIVATE CHAPEL OF REST

4 LONDON RD STROUD GL5 2BP
01453 790900
A PAINSWICK BASED FAMILY BUSINESS
SERVING OUR LOCAL COMMUNITY

Mr and Mrs Productions
Wedding & Event Films
www.mrandmrsproductions.com
Please feel free to call us on:
077 6957 4999

Field Club Cotteswold Field Club- Janet Jenkins Walk No 3, 27th June

Fourteen of us met near the entrance to Catbrain Quarry for a walk up to the Beacon and back to the Golf Club, taking in a couple of quarries. Janet gave a very clear overview of the history of the scenery before us. Looking north – to NW Scotland, the Hebrides, in fact, the kneiss marked the beginning of British geological history. Nearer, the Scottish Islands had twenty five kilometers of sediment dumped on them whilst at the bottom of the sea. Nearer still are the younger Midlands coalfields.

The slopes around here are too steep for beechwoods, except at Cranham Common, so is permanent sheep pasture. But this frees the Beacon for leisure activities, walking, dogs, golf, etc.

We walked to the edge of a steep escarpment held together by ash trees, considered a weed by conservationists. Further along, on the flat horizon, were beech woods – beech trees having shallow, horizontal root systems. We were reminded that forty toppled in the Plantation during more recent storms.

Quarystone from here was used in Medieval times providing stone for building Llanthony Priory, Gloucester Cathedral and Westminster Abbey. We were amused to visualize how the stone was transported to London!

On walking down to the road, we noted Pyramidal, Common Spotted and perhaps one Fragrant Orchid as well as Common Twayblades. Kidney Vetch, food of the Small Blue Butterfly, Yellow rattle, Common and Coarse Knapweed, Fairy Flax, Eyebright, Yellow Wort, Oxeye, Rockrose, Milkwort, Hawkweed and Hawkbit as well as Rough Hawkbit.

Working back to the Catbrain Quarry, we noted Mouse Ear Hawkweed with more lemony flowers, Thyme, Hedge and Lady's bedstraws.

Back at the Catbrain Quarry we noted the quarrying of large pieces of stone from the lower parts of the exposure. We walked along the recently diverted public footpath back to the Golf Clubhouse for a welcome lunch outside on the balcony. Janet Jenkins had given us a very clearly explained geological history and we agreed that this walk had been worth far more than several hours in a lecture room! Thank you Janet.

If you are interested in knowing any more detail, Janet wrote an excellent article in the Number 7 (2004) Issue of the Painswick Local History Society's Painswick Chronicle.

Cotteswold Field Club- Joe Angseesing Walk No 4, 30th July, 2011

As we were waiting for the group to assemble at Aust, some us watched a Sedge, or was it a Reed, Warbler feeding a young chick in the reedbed. We walked down by the estuary to see the horizontal layering, with a slight dip to the east, laid down in the Jurassic era. This exposure, under the Severn Bridge,

shows a sequence of clays and limestones, which Joe was able to illustrate with a collection of representative samples laid out on the beach. There was very little evidence of fossils. We were lucky enough to spot a peregrine flying high across the estuary and two male kestrels.

By contrast, at Hock Cliff, our second venue, we were able to pick up a selection of fossils, especially Devil's toe nails. Plants of sea aster and bristly ox-tongue were in flower.

Thanks to Joe for a day looking at the geology of Gloucestershire.

Joyce Barrus

Annual Show 2011



The 59th Annual Show of the Painswick Horticultural Society takes place at the Painswick Centre on Saturday 10th September. Entries may be staged between 9.30am and 12.30 with the Show opening at 2.30pm. Presentation of prizes, including to the winners of the Society's Painswick in Bloom Competition, commences at 4.30pm.

As well as the usual classes for vegetables, fruit, flowers, flower arrangements, cookery and handicrafts, there is the opportunity to renew

membership or to join the Society for the coming year. Also in September, one week after the Show, the Society will be holding a lunch at the Painswick Golf Club. For further details of these events please contact Philip Berry on 813227.

Painswick Horticultural Society
59th Annual Show
at
The Painswick Centre
from 2.30pm to 5.00pm on
Saturday 10th September 2011

flowers
vegetables
crafts
cakes
home made refreshments
produce stall
sale of any donated exhibits
and the opportunity to register Membership

Need help around your home?
Decorating, Maintenance, Painting,
Paper Hanging and much more
Friendly prices from a
friendly caring person

DJH Home Services
David Holder
T: 01452 611866
M: 07977 099998
Established 1984

richard knowles
bespoke furniture

built-in and free standing
bookcases, wardrobes and cabinets
also repair and restoration
free estimates.

Tel: 01453 767816
Mobile: 07968 652908

visit gallery at
www.richardknowles.co.uk

WANT MORE FROM YOUR PC?

- PCs built for all requirements
- Repairs and maintenance
- Broadband set-up
- Virus removal
- Security checks
- Upgrades

and much more...

PC REPAIRS & MAINTENANCE
Based in Stroud

Call Rodger
tel 01453 766312
mob 07949 792501

www.pccomputerrepairs.co.uk

**Richmond Painswick Wellness Spa –
looking after Mind, Body and Soul**

**A state-of-the-art complex with gymnasium,
pool, jacuzzi, sauna and steam room**

Wide variety of Health and Beauty treatments
Spa day packages available | Open to non-members

Call the Wellness Spa team on 01452 810211 to book your appointment

September News



The Supporting People Programme offers vulnerable people the opportunity to improve their quality of life through greater independence. It promotes housing-related services which are cost-effective and reliable, and which complement existing care services. Supporting People is a working partnership of local government, service users and support agencies. One such agency is Qcare which is an organisation that supports people with sensory impairment.

Qcare can offer support to anyone who is: Profoundly Deaf, Deaf/Blind, Hard of hearing and the visually impaired.

- The organisation offers help on a number of issues including:
- General Support /Help to access services/Social issues
 - Housing Needs/ Family and Home
 - Health/Mental health/Rights of Service users
 - Financial matters, including Benefits

The cost of using the Service will depend on your financial situation. For those people on low incomes the cost may be very little or no cost at all.

For information about this service please telephone : 0845 688 6674

Additionally, you can contact the Sensory Team through the Adult Help Desk (social services help line) and be referred for help with equipment to use around the house or outdoors. It's important that you have been fully professionally investigated to find the reasons for your difficulty with seeing or hearing. Adult Help Desk: 01452 426868

The Gloucestershire Deaf Association offers a support service to anyone who is hard of hearing, working with them to overcome day-to-day difficulties which they may face. They offer the following services; information and support, home visits for those who are housebound, hearing aid services

Physiotherapy & Sports Injury
 Clinic

Acupuncture
Cranio-Sacral Therapy
Sports Injuries
Sports Massage
Osteoarthritis Management
Hydrotherapy

AT

Painswick & Stroud

Phone: 01453 755948

Call now for a consultation and begin your road to recovery

to care homes, and help with their wide range of equipment. G.D.A Tel: 01452 372999 Similarly there is

GCAB (Gloucestershire County Association for the Blind) which offers help to people with serious sight impairments. They have a variety of equipment to try, offer help and advice, have a quarterly newsletter, have a Hospital Information Service in most of the eye clinics in our local hospitals and can make home visits where appropriate. GCAB Tel: 01242 221170

Royal National Institute of Blind People (RNIB) is the UK's leading charity offering information, support and advice to almost two million people with sight loss. RNIB Helpline: 0303 123 9999

Citizens Advice have let us know they have brought out a new national telephone number for people wanting advice, but don't worry, if you ring from within the Stroud District, your call should still come through to the Stroud Bureau, as long as there is an adviser free to take the call. The new number is 08444 111 444.

The telephone number we gave in our previous article about CAB regarding enquiries from people over 65 years is still 07815166143; we understand this service will continue until the end of 2011.

If you would like to visit Stroud and District Citizen's Advice Bureau their office in Stroud is open Monday, Tuesday, Thursday and Friday between 10 am and 1.45pm, provided staff are available (not Wednesdays).

There are also the following services across the rest of the district:

Monday	DURSLEY LIBRARY	10 a.m. -12 p.m. 1.00 pm – 4p.m.
Tuesday	WOTTON UNDER EDGE CIVIC CENTRE	10 a.m. – 1.00 p.m.
Wednesday	BERKELEY TOWN HALL	1.00 p.m. – 3.00 p.m.
Thursday	STONEHOUSE TOWN HALL	10 a.m. – 1.00 p.m.
Thursday	STONEHOUSE APT CENTRE, PARK PARADE	1.00 p.m. – 3.00 p.m.
Friday	DURSLEY LIBRARY	10 a.m. -12 p.m.

There are also the following services across the rest of the district:

Background information on most topics can also be accessed from the CAB website: www.adviceguide.org.uk
 Lou Kemp 07776 245767

A La Carte Private Hire

Tel: 01452 813268
 Mobile: 07748 235164
Sandra Walklett

Any Distance – Airports, Seaports, etc
 Quotations Without Obligation

PAINSWICK ACCOUNTING & TAXATION SERVICES LTD

FOR ALL OF YOUR ACCOUNTING AND TAXATION NEEDS

PLEASE CONTACT SHARLA DANDY
 ON **01452 813533**
 OR EMAIL sharla@paatsltd.co.uk

VISIT OUR WEBSITE

www.paatsltd.co.uk

FOR MORE INFORMATION

Grove Court, Upton Hill

Cedar Motor House

Upton St. Leonards Gloucester

Tel: 01452 617240
 Mob: 07976 322735

MOT Testing Station

Situated just off Upton Hill. Grove Court is 100 yds past the kings Head Pub on the right.

Peter Barnfield
 Painter and Decorator

Need a hand with your decorating or odd jobs?

**External/Internal decorating
 Paperhanging – no job too small.**

Free Quotations
 References available on request
 Call me on Tel: 01452 411182
 Mobile: 07881408380
Peter.Barnfield@blueyonder.co.uk

spaceintense 01452 813658

hire@spaceintense.co.uk
www.spaceintense.co.uk

Garden Party Tent Hire



Wearable Art Painswick



Wearable Art 2011

In our last issue we were pleased to be in a position to include a full front page article about the truly amazing 'production' which attracted so many from far and wide to the village on 10th July, and our entire centre pages were devoted to colour photographs to catch the extent and mood of the event.

Needless to say, many cameras were in use that day, and we have decided to include a few more photographs here by way of reminder of other participants and 'creations'.



Golf Club

The summer is particularly busy with competitions and matches. And the course is in good condition thanks to good weather and the excellent attentions of our two greenkeepers.

In the seniors section, the latest competition was the Deva Cup held on 11th August. The Deva Cup is a "Greensome" competition, with teams of two people playing together. Both members of the team drive off at each hole; but then they must choose one ball with which to complete the hole and play alternate shots. The winners were Norman Pullin and Vernon Wilkins with an excellent 43 points.

The seniors' matches with other clubs have generally followed the pattern of winning at home and losing away, though the last month saw two excellent away wins – at the new course at Lydney and at Gloucester.

The club welcomes new members and visitors. If you are interested in playing, please phone Peter Rowe (813228) who would be happy to provide further information. If you would like a lesson or book a tee time, please call the club's professional, Marc Cottrell (812615).



Tennis

Painswick Ladies win Gloucestershire League



The Ladies A team have, for the first time, won the Premier division in the Gloucester Summer Wilson League. They have been in the Premier division for a number of years and have finally made it!

The B team has managed to stay in the premier Division and the C and D team in Divisions 1 and 2. The E and F teams will go down a division next year but the G team have also won Division 6.

Charity Tournament

The annual tennis tournament took place in July to raise money for Maggie's Cancer Care Homes in Cheltenham. 24 ladies took part with the eventual winner coming from Bristol, second place went to a Painswick player, Megan Butterworth. The tennis was followed by an excellent lunch for both players and friends and £300 was raised for Maggies.

Highnam Court visit

The Tennis Club had a most enjoyable evening at Highnam Court last week. Roger Head was kind enough to give us a personal guided tour of his house and gardens at Highnam Court. Lots of history facts were taken in whilst walking around this amazing garden. We then had a tour of the house which had some exquisite pieces of furniture and art which Roger has collected. £160 of donations were collected that evening for the Pied Piper Appeal. Thanks must go to Carol Ruddy for organising such a wonderful evening!

Badminton Club



The new season will start on Monday 5th and Thursday 8th September at the usual time of 8-10pm. New members are WELCOME and anyone who would like to play should initially contact John Wylde on 814349.

Junior Badminton will start on Thursday 8th September. Anyone aged 8-16 years who would like to play or learn to play Badminton should contact Nicola Robinson on 812563.

David Harley Trophy

A couple of weeks ago members of the Badminton Club competed for the annual David Harley Golf Trophy this year played at Minchinhampton Golf Course. The weather was ideal and the competition close with Roy Woodward the winner and the runner up George Bragg. The photo shows last year's winner Richard Gambold presenting the trophy to Roy at the dinner.



Pressed 2 Perfection

The Premier Ironing Service

- ✓ Reliable and accommodating
- ✓ Free pick up & delivery
- ✓ Only £9.00 an hour and some prices per item

Viki: 07976 400139

Call in the perfect solution!

Davenports

Landscaping & Building

Renovations • Extensions • Natural Stone Work • Paving & Driveways • Dry Stone Walling • Groundworks • Decking

T: 01452 813660

M: 07791 693439

E: mike@davenports.uk.com

www.davenports.uk.com

Wick Street Security

Locksmith & Secure Solutions

Moved Home or Office? Who's Got Keys?

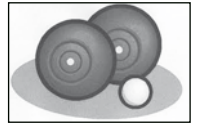
All types of security equipment supplied & fitted to insurance standards.
Lock opening service & period lock restoration.

Tel: 01452 812201 Mob: 07812 540178

Email: info@wickstreetsecurity.com



Short Mat Bowlers



This club, which meets just about every Monday in the year in the Town Hall, prides itself upon not just being about woods and jacks and bias, but appreciating each other's company too. Many of its members came together last month for a fine supper which had been carefully arranged to take into account whatever weather was in store. We gathered in the superb garden of Marguerite Treglown in New Street for pre-dinner drinks, and then adjourned to a meal masterminded by Jean Gibson in the Town Hall itself.

Unlike the two outdoor clubs, Short Mat is all-weather, and all-ability too! There are, of course, limits to the number who can play at one time. The evening session is currently fully subscribed, the mornings fluctuate, but few take advantage of the mat being out all afternoon. If you might, just might, be

interested in trying this sport and are aged between 10 and 100, we would be only too pleased to show you how - free on that occasion too! Just phone 813101 or 810808 and we will do the rest.

Leslie Brotherton

Painswick Bowls Club

Painswick Bowls Club (that's the one by the Centre) will be 100 years old in May 2012. As an early start to the celebrations we asked the children from The Croft School to redesign our flag. The committee decided their favourite design was by Louis Lovell but all children who entered the competition were invited to a "Roll up" which took place on 29th July. Our picture shows an enjoyable afternoon had by all. The club believes a couple of Mum's and a Grandmother may have been enticed to join!

David Linsell 812464



Sheepscombe Bridge Club



The new season starts on Thursday 15th September and then on alternate Thursdays starting promptly at 7.15pm in Sheepscombe Village Hall. We are always pleased to see new players so if you need to know more do telephone Hugh Tarran on 814081 or myself on 812588.

Joy Edwards

Table Tennis

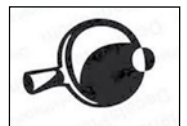


Table Tennis will start again on 14th September. We play in the Centre's Beacon Hall each Wednesday evening from 7-9pm. The cost is £4 - only when you play. We are a social club only - we do not play other teams and have 3 tables available plus a supply of bats and balls!

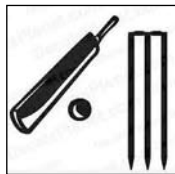
Please do come along for some sociable hand/eye co-ordination.

David Linsell 812464

Sport continued overleaf

Cricket

Last Saturday Painswick First Eleven beat Bredon First Eleven by 42 runs to win the Gloucester Division title.



August results

Sat 6th. Tewkesbury 1st XI 149 Painswick 1st XI 152-1. Tewkesbury 2nd XI 149 Painswick 2nd XI 153-6.
Painswick 3rd XI 174-8 Eastington 1st XI 175-4.
Sat 13th. Lydney 1st XI 152 Painswick 1st XI 154-2
Painswick 2nd XI 216-9 Lydney 2nd XI 159-6.
Painswick 3rd XI 76 Stroud 3rd XI 78-2.
Sun 14th. Hambrook Sunday 2nd XI 186-9
Painswick Sunday XI 187-4.
Sat 20th. Hatherley & Reddings 1st XI 213-3
Painswick 1st XI 214-6. Hatherley & Reddings 2nd XI 221-5
Painswick 2nd XI 172-7. Painswick 3rd XI 119
Woodchester 1st XI 120-4. Painswick 4th XI 116
Cam 4th XI 69.
Sat 27th. Painswick 1st XI 252 Bredon 1st XI 210-9. Painswick 2nd XI 84 Bredon 2nd XI 85-4.
Sun 28th. Frampton 3rd XI 235-7 Painswick 4th XI 90. Frocester 5th XI 126 Painswick 3rd XI 127-0.

The Recreation Ground

The use of the Recreation Ground is often a talking point for villagers. It's of interest to look back to a Beacon report of November 1982. The report stated that "the use of the Recreation Ground for any purpose other than villagers' recreational activity has long been opposed by a not insignificant section of the community. The report went on to say that "recent Parish Council decisions will therefore have pleased those who wish to keep the field in its present state and not allow any additional development for whatever purpose. The Recreation Ground, as well as the Painswick Club and Institute Hall, now the Painswick Centre, was given by Mrs Frances Sarah Williams who in the words of the late local historian Colleen Haines, was 'surely one of the most generous benefactors that the village has ever known'. It was in 1907 that the Ground was given by Mrs Williams for the public's use and trustees were appointed. Today the trustees are the Parish Council who in turn are responsible to the Charity Commissioners in matters such as proposed change of use.

Coach fares

National Express is advising its users that the Government has announced that it will end the funding for its half price coach ticket scheme on 31st October as part of its spending cuts programme. The scheme currently provides up to half price travel for over 60 year olds and disabled people. National Express report that whilst they are looking to introduce a replacement scheme, without the Government funding it will not be possible to make discounts as high and the cost of travel will increase for passengers. National Express have written to the Government to ask that they reconsider their decision.

PROPERTY REPORT for August from Murrays

Murrays Estate Agents are both excited and delighted to announce that we are launching our Lettings Department on the 5th September 2011. We have been renowned for our involvement and expertise in the sale of individual cottages and country homes throughout the Stroud Valleys for years, and now have decided to expand further to include these expertise in the field of lettings. The same high standard of service, which our sales clients currently enjoy, will now be extended to this prime sector of the property market and provide landlords of the finer properties within the area a local and trustworthy agency. We have noticed for some time that landlords in the higher sectors of the property market locally have had to seek effective letting services from outside the area and we are now aiming to provide them with our own personal and professional lettings service on your doorstep.

Joining our company to lead the new department will be Sarah McEwan who has almost a decade of experience in lettings and property management locally. If you should be interested in having a free valuation for letting or selling your property then please do not hesitate to call us on 01452814655.

July and August have been particularly busy for properties for sale for Murrays as well, which is quite unusual for the summer months as a lot of people are away on holiday or busy with children off school etc. Viewings are well up on June and therefore so are the sales. We have taken on many new properties including

the impressive Holcombe Farm, a beautiful 5 bed Cotswold farm with 83 acres, The Stables, a 5 bed converted stable block with 8 loose boxes and 24 acres, Tilling, a very well presented, spacious family house with lovely views on Kingsmill Lane which is already under offer, Stable Cottage a beautifully presented 3 bed Cotswold cottage on Hale Lane, Pear Tree Cottage, a 3 bed cottage with great views on Vicarage Street, 6 Stroud Road, a spacious 4 bed in Painswick which is also already under offer, 25 Upper Washwell, a good 3 bed family house with large garden, 11 Richmond Village, a very smart 2/3 bed apartment, Mullions, a spacious 4 bed family house in Queensmead, Callowell House, a 7 bed period house on the way to Stroud in need of updating, Teekles Court a listed former farmhouse in Haresfield, 3 Old Coach which is part of Haresfield Court also in Haresfield, Bramble Cottage an extremely pretty detached cottage with paddock in Cranham and 1 Springfield Cottages a 2 bed recently extended cottage in Birdlip.

Properties that we currently have under offer include Tilling on Kingsmill Lane, 9 The Croft and 6 Stroud Road all within Painswick, Maple House in Cranham and Green Hedges on The Plain in Whiteshill. Properties that have now sold are Orchard Cottage on Blakewell Mead in Painswick and Hillcrest and Lorely, which are both in Pitchcombe.

James C Murray - Partner



**THREE COTSWOLD OFFICES
& MAYFAIR LONDON**
PrimeLocation.com

New Street PAINSWICK
01452 814655
www.murraysstateagents.co.uk



In-depth local knowledge. A global network, including 5 Cotswold offices. Why settle for anything less?

Hamptons Painswick
01452 812354

www.hamptons.co.uk

SEPTEMBER

Mon	5	Short Mat Bowls - Mondays (contact 813627) Yoga (Mondays) contact Kim 812623	Town Hall Sheepscombe Vill. Hall	10.30am 6.30 to 8.00pm & 8.15 to 9.45pm
		Painswick Community Choir - Mondays (Enquiries Adrian 07855404147)	Painswick Centre	7.00 to 8.30pm
Tue	6	Bingo: Tuesdays – Tel. Ann, 813911/Liz, 813139	Ashwell House	6.30 to 9.00pm
Wed	7	Yoga (Wednesdays) contact Kim 812623 Probus: The Extraordinary Life & Death of Edward 11 - Peter Petrie	Sheepscombe Vill. Hall Painswick Centre	9.30 to 11.00am 10.00am
		Parish Council Planning & Frederick Gyde Trust meeting	Town Hall	7.00pm
Thu	8	Yoga - All Abilities (Thursdays) Cotswold Room 812623 T'ai Chi: Thursdays - Contact 812344 Dog Training Club (Thursdays) Jolly Stompers Line Dancing: Beginners - Thursdays Experienced beginners - Thursdays	Painswick Centre Town Hall Church Rooms Town Hall Town Hall	9.30 to 11.00am 9.30am 9.30 to 12.00noon 12.00 to 1.00pm 12.30 to 1.30pm
Fri	12	Country Market - Coffee available - Fridays	Town Hall	10.00am
Sat	10	Horticultural Society Annual Show	Painswick Centre	2.30 to 5.30pm
Tue	13	Talk about local NHS: Nicola Hayward	Town Hall	7.00 to 9.00pm
Wed	14	Table Tennis restarts (Wednesdays) - Enq. 812464	Painswick Centre	7.00 to 9.00pm
Thu	15	Music Appreciation Group: Introduction	Town Hall	7.30pm
Fri	16	Friday Club: Textile Art - Gill Allen	Town Hall	2.30pm
Sat	17	Copy dateline for October Beacon		
Tue	20	Painswick Players AGM Local History Society: The Stuff of History -The Cowle Museum & its Collection - David Mullin	P. Centre, Cotswold Rm Croft School	7.30pm 7.30pm
Wed	21	Probus Outing to Dean Forest Railway Parish Council Meeting	Stamages Car Park Town Hall	10.00am 7.30pm
Sat	24	Friday Club Autumn Outing to Malvern Autumn RHS Show: Bookings - Tel. 812344	Stamages Car Park	9.00am
Sun	25	Annual Clypping Service - Preacher: Rev. Tim Hastie-Smith	St Mary's Churchyard	3.00pm
Mon	26	Painswick Bird Club Residential Field Trip to Oxfordshire, Blenheim & The Thames	Oxfordshire	
Tue	27	Yew Trees W.I.: Medical Women Through The Ages - Jenny Barraclough. Painswick Players Playreading: "The Bear" - Brian Friel & "Alternative Accommodation" - Pam Valentine	Town Hall P. Centre, Green Room	7.30pm 7.30pm
Thu	29	Theatre Club Outing to Stratford Gloucestershire LINK Information Event Music Appreciation Group: Franz Schubert	Stamages Car Park Richmond Painswick Town Hall	10.00am 12 noon to 2.00pm 7.30pm
Fri	30	Macmillan: World's Biggest Coffee Morning Friday Club: Herbal Medicine - Caroline Sheldrake	Church Rooms Town Hall	10.30am to 1.00pm 2.30pm

OCTOBER

Sat	1	October Issue of The Painswick Beacon published		
Mon	3	Community Lunch: Hosts - St Mary's Church	Ashwell House Centre	12 noon to 1.15pm
Wed	5	Probus: National Parks - Anne Saunders Cotswold Naturalists Field Club Lecture: Windmills in Art & Design - Amy Woolcott. Enq. 813228 Parish Council Planning and F & GP Committee meeting	Shires Room, Falcon Painswick Centre Town Hall	10.00am 2.30pm 7.00pm
Thu	6	Painswick Bird Club / Glos Naturalist Soc. "Sense & Non-senses of Birds - Dr Timothy Seller	Town Hall	7.30pm
Mon	10	Community Lunch: Hosts - Country Market	Ashwell House Centre	12 noon to 1.15pm
Thu	13	Music Appreciation Group: William Walton	Town Hall	7.30pm
Fri	14	Friday Club: Keeping the Lights On - Stewart Price	Town Hall	2.30pm
Mon	17	Community Lunch: Hosts - Croft Primary School	Ashwell House Centre	12 noon to 1.15pm
Tue	18	Local History Society: The Cotswold Hills Archaeological Aerial Survey - Josephine Janik	Croft School	7.30pm



Wed	19	Probus: Silver - Nigel Dimmer Parish Council Meeting	Shires Room, Falcon Town Hall	10.00am 7.30pm
Sat	22	Painswick Singers' Autumn Concert	Painswick Centre	7.30pm
Mon	24	Community Lunch: Hosts - Our Lady & St. Therese R.C. Church	Ashwell House Centre	12 noon to 1.15pm
Tue	25	Yew Trees W.I.: A Year in Nepal - Bob Price Painswick Players Playreading	Town Hall P. Centre, Green Room	7.30pm 7.30pm
Thu	27	Music Appreciation Group: Music of World War 1	Town Hall	7.30pm
Fri	28	Friday Club: Sue Ryder - Duncan Willoughby	Richmond Painswick	2.30pm
Mon	31	Community Lunch: Hosts - Dog Training Group	Ashwell House Centre	12 noon to 1.15pm

NOVEMBER

Wed	2	Probus: Freemasonry & its Secrets Part 2 - Ray Pearson Cotteswold Naturalists Field Club Lecture: The Cotswolds, A Literary Journey - Gordon Ottewell. Enq. 813228	Shires Room, Falcon Painswick Centre	10.00am 2.30pm
Sat	5	Theatre Club Outing to Cheltenham	Stamages Car Park	12.45pm
Mon	7	Community Lunch: Hosts - Puffins	Ashwell House Centre	12 noon to 1.15pm
Thu	10	Music Appreciation Group: Concert Outing to Birmingham Symphony Hall	Stamages Car Park	4.00pm
Fri	11	Friday Club AGM followed at 2.30 pm by Pat Daly's African Memories	Town Hall	1.45pm
Sat	12	Concert by St. Cecilia Singers	St Mary's Church	7.30pm
Mon	14	Community Lunch: hosts - Painswick Conservation Society	Ashwell House Centre	12 noon to 1.15pm
Tue	15	Local History Society: Domestic Servants in the 19th Century - Dr Christine Seal	Croft School	7.30pm
Wed	16	Probus:History & development of helicopters - Mark Wilkins	Shires Room, Falcon	10.00am
Thu	17	Painswick Bird Club: At Home with the Robin - Mike Read, Wildlife Photographer	Richmond Village	7.30pm
Mon	21	Community Lunch: hosts - Painswick Parish Council Concert by Voskresenije from St Petersburg	Ashwell House Centre St Mary's Church	12 noon to 1.15pm 7.30pm
Tue	22	Yew Trees W.I.: The Joys of Running a Charity Shop - Adele Lang (followed by AGM)	Town Hall	7.30pm
Thu	24	Music Appreciation Group: Birmingham	Town Hall	7.30pm
Fri	25	Friday Club: Deafness - Wendy Wildman, Glos. Deaf Association	Town Hall	2.30pm
Mon	28	Community Lunch: hosts - Christian Aid	Ashwell House Centre	12 noon to 1.15pm
Tue	29	Painswick Players Playreading	P. Centre, Green Room	7.30pm
Wed	30	Probus: Field Gun Battery in WW2 - Norman Snowden	Shires Room, Falcon	10.00am

DECEMBER

Mon	5	Community Lunch: hosts - Terry & John Rohrbeck	Ashwell House Centre	12 noon to 1.15pm
Wed	7	Cotteswold Naturalists Field Club Lecture: Cycling to Compostela - Alastair Goldie. Enq. 813228 Probus Club Christmas Dinner	Painswick Centre	2.30pm
Thu	8	Music Appreciation Group: Christmas Social	Town Hall	7.30pm
Fri	9	Friday Club: Croft School Christmas Concert	Town Hall	2.30pm
Tue	13	Yew Trees W.I.: Christmas Gathering	Town Hall	7.30pm
Wed	14	Probus: Old Tyme Music Hall - Mike Wallace	Shires Room, Falcon	10.00am
Fri	16	Friday Club Christmas Lunch	Rococo Gardens	

2012

FEBRUARY

Thu	16	Painswick Bird Club: "Urban Dwelling Peregrines" - Edward Drewitt, Broadcaster & Wildlife detective	Town Hall	7.30pm
-----	----	--	-----------	--------

Entries for the Village Diary should be sent direct to
Eddie Buttrey at em-m.buttrey@virgin.net

While we are only too pleased to publish dates of forthcoming events as far into the future as organisers wish, and space permits, we may in future delete those which refer to recurrent weekly meetings at the start of the next month if such prevents us from including periodic events many months hence.
We urge those organising weekly events/meetings to use our other columns to make short reports and highlight their having frequent events.

NEW APPLICATIONS

SPRING COTTAGE, Stepping Stone Lane
Replacement of extant planning permission S.08/1807/FUL for the erection of single storey extension.

UPPER DELL HOUSE, Beech Lane
Extension and alterations.

EDGE COTTAGE, Edge Road, Painswick
Alterations and first floor extension to provide bedroom and bathroom.
Improve kitchen and family accommodation on ground floor.

KENIDJACK, Back Edge Lane, Edge
Removal of conservatory and sun lounge and erection of two storey extension.

HILL HOUSE, Gloucester Street, Painswick
Erection of a gazebo in the garden.

HAMMONDS BARN, Wick Street
Erection of extension to the bedroom wing.

THE STABLES, PAINSWICK HOUSE, Gloucester Road Painswick
Structural repairs to freestanding garden boundary walls.

TURNPIKE HOUSE, Slad, Stroud
Garage conversion, erection of first floor extension and single storey side extension.

CONSENT

TELEPHONE EXCHANGE, Stroud Road
Amendments to elevations (following internal changes), parking arrangements, (to limit paved areas), and change external materials from Lime render to Natural Stone, following permission S.10/1819/FUL

WASHBROOK MILL, Edge Road
Proposed new garden store. Resubmission following refusal S.11/0464/HHOLD.

HYETT ORCHARD, Hyett Close
Reduce two lime trees by approximately 30%.

TOCKNELLS HOUSE, Painswick
Proposed ancillary room to provide storage solution for fuel (wood pellets) for new boiler.

ROSE COTTAGE, Damsells Mill Lane, Sheepscombe
Alterations to existing and construction of single storey side extension.

MINI-ADS
Free to subscribers.

For non-subscribers and all in the Vacancies or Business category there is a flat charge of £5.00.

For all advertisers some priority may be necessary if space constraints apply.

Text maximum of 30 words + payment by cheque in advance,
to 'The Painswick Beacon', to
Joyce Barrus, Millcroft, Steppingstone Lane, Painswick GL6 6RU

Carer wanted on Sundays to help elderly lady in Ashwell with dressing and breakfast, lunch and tea - total 3 hours, starting mid October. Telephone Rose 01531 660281 or Anne 812798.

Dog Walking. Retired businessman has been walking dogs in the area for over ten years, now looking for one/two extra dogs. Very competitive rates. Excellent references. Michael 07960 080058.

Discover North Norfolk – it's Wildlife and tranquillity. Three bed detached period cottage to let, CH etc. Discount for Beacon readers. Full details 810942 www.fivethegreen.co.uk

PK Window cleaning
Outside and inside cleaning. Frame cleaning. Conservatory roof cleaning. Gutter emptying/cleaning
Fully insured. Reliable friendly service
Call Phil on 01453 840468
or mobile 07772434785

House available for short term let Available 10th March – 26th August 2012. Four bedroom, detached in Painswick village, fully furnished.
Off road parking for 3 cars
Double glazing and gas central heating. En-suite shower room and family bathroom. Call 07881 798151

Forestry and Land Maintenance
Professional tree work, grounds and woodland maintenance, fencing and firewood. Tel: 01452 813697
(m) 07795 597901
jasperdrake@btinternet.com

MINI-ADS

Set of 4 Bowls, size 2, and Bag for sale. £45. Tel: 813077

WANTED Child's Car Seat for a child aged 2 years upwards. In good condition. Telephone 813981.

Small upright piano currently in the upstairs room above the old library. £50 or nearest offer. Buyer collects. 812965 (evenings) 425692 (day) - ask for Pippa Dickinson

Wanted, small area of woodland for local woodworker to manage. Either sale or lease. Please contact Nick 01452 813246

BUSINESS

Garden Tasks If you don't feel like doing those back breaking tasks in the garden then let me help, all work considered, contact Stephen 07794512687.

Bags of Kindling
(40cms by 25cms) £2.00 per bag
Delivery min. 5 bags.
Buy 5 get 1 free. Call 813684

Seasonal Garden Services, with local references. Lawn cutting/strimming. Hedge cutting/shaping. Turfing, fencing maintenance/erection, general garden clearance, weed control, exterior decorating. Gutters and patios cleaned. Contact Julian Telling 07895 224863. Juliantelling@yahoo.co.uk

Book Publisher's Reader of many years' experience offers private manuscript reading and advice. Fiction and general non-fiction. Submit synopsis and first 50 pages. maggietaugott@googlemail.com

Parlez-vous francais?
Help your child improve his/her French over the school holiday. Individual tuition, any level, given by experienced native French lady teacher. For further details please contact:
Cécile Markham (01452) 724144
MarkhamSC@aol.com

CV Writing, Application Forms, Interview Techniques, How to Find a Job, How to Market Yourself. University, other education or training?
I am a qualified Careers Adviser who would like to help you achieve.
01452 814236 or preecejennie@gmail.com

Tai Chi. Beginners Class.
Improve posture, balance & flexibility. First class free. Every Wednesday 7 – 8 pm at Brockworth Community Centre. Tel: Olly on 0750 8686315 or visit www.chirolling.com

**General Building Work
Kitchens / Bathrooms
Extensions / Garages
Barn conversions
New Build
Renovations Etc.**

A Member of
The Guild of Master Craftsmen

**Richard Twinning
& Partner**

General Builders
With over 20 year's experience

Tel: 01452 812086
Mobile: 07899 791659
Fax: 01452 810785

**Natural Stone Work
Hard landscapes
Dry stone walling
Patios and Pointing**

The Personal Column

Jenny Gaugain

Wedding

Congratulations to ANNA GRAESSER and RICHARD (DICKIE) PULLAN who are to be married at Slad Church on 17th September, they apologise in advance for any festive noises that may drift across the valley to Painswick.

Change of adress

NAOMI MaCLAURIN JONES has moved to Flat 14 Wisma Mulia, Bridge Rd, Frampton- On Severn.

Goodbye

WE say goodbye to NORMAN and MARY RAMPTON, CAROLINE BEACHER and MR HENRY PRICKETT.

Condolences

Our sincere sympathies to the family and friends of JOHN STANGROOM and ANGELA CRITCHLEY who have died recently.

You could help Jenny Gaugain, if you would relay information about those you know and for whom a mention in the Personal Column would be appreciated.

August in Painswick

We invited photographs typifying August in this village, and received just the one from Harold Wood. No prizes for guessing the subject, which he entitled 'August Gardening'.



Welcome

We welcome JOHN and WENDY HODGESON who have moved to Lower House, Kemp's Lane, ALLAN and JOAN READ who have moved to Skyrack, the Highlands, ROBERT and LINDSAY SPENCER who have moved to Blakewell House, Edge Rd, GARETH and NANCY PARKER who have move to Turnstone House, Greenhouse Lane, Mrs ANNE MILLARD to Greenbanks in Blakewell Mead, ANNE and JOHN NEWHILL to Old Stable, St Mary's Street, JAMES and KATE MILLAR to Beech Cottage, Beech Lane and CHRIS and JILL ROBERTS who have moved to Long Mynd, The Highlands

NEXT ISSUE

Publication date

SATURDAY
1st OCTOBER

Dateline for all copy
SATURDAY
17th SEPTEMBER

for editorial attention use
beacon@painswick.net

or hard copy - preferably typed
Beacon post box - New Street

All copy must include author, address and contact telephone number. Photographs and advertising art work original at 600dpi in JPEG

web site - about us
www.painswickbeacon.org.uk

for current issue and archive, our history and aims, the annual directory, village maps and the current weather forecast

The Beacon Team

Co-ordinating Editor this month
Terry Parker 812191
terence5545@btinternet.com

Editing Associates
Leslie Brotherton 813101
mr@lesliebrotherton.com
Peter Jenkins 812724
pdj.beacon@tiscali.co.uk

Personal Column
Jenny Gaugain 812599
f.gaugain@btinternet.com

Diary
Edwina Buttrey 812565
em-m.buttrey@virgin.net

Feature writers
Carol Maxwell 813387
Carolmaxwell@talktalk.net

Sport
John Barrus 812942
barrusjp@yahoo.co.uk

Distribution
Celia Lougher 812624
celia@lloydstone.plus.com

Treasurer
Richard Aspinall 812379
rgrasp@tiscali.co.uk

Advertising
Joyce Barrus 812942
joycebarrus@yahoo.co.uk

Subscriptions
Peter Roberts 813271
petedr56@btinternet.com

Quiz
Charles Dorman 814548
chasdorm@googlemail.com

Directory
Carol Maxwell 813387
Carolmaxwell@talktalk.net

Production Assistant/Graphics
Emma Jackson

Printed in Gloucester
for
The Painswick Beacon
by
www.inkylittlefingers.co.uk
01452 751900



All Taxation &
Accountancy Needs

We're here to help.
Forward thinking
professionals with old
fashioned values on
service and quality.



CHARTERED ACCOUNTANTS

Tel: 812491 www.pricedavis.co.uk

The Old Baptist Chapel, New Street