

The Painswick Beacon

Volume 44 Number 6

September 2021

Painswick comes back to life

With formal restrictions lifted and the vast majority of Painswickians now vaccinated (but at the time of writing, new Covid cases still high and even rising), Painswick is slowly coming back to something like the life it enjoyed before the pandemic. Most businesses and sporting organisations are already back in full swing, exercise and activity classes are beginning again and from September most clubs and societies are restarting their programmes of meetings. Then on Sunday 19th the village will really come back to life with the Painswick Feast and Clipping Service in the St Mary's churchyard (see page 7).

We have several articles this month from organisations that are launching their activities again and on page 3 we have a more comprehensive list of clubs and societies re-opening, with contact numbers to get in touch with them. Why not take this opportunity to start a new activity and to get involved in the Painswick community and all that it has to offer?



Arguments rage over hospitality

While all around them activity is coming back to life, some of Painswick's key commercial buildings remain resolutely closed and empty. At the time of writing the Falcon remains closed for lack of a new tenant, the Painswick Pooch is still closed for lack of a buyer, and Cardynham House is caught in limbo with no decision yet on its plans to convert to a 'dwelling house'. Meanwhile several commercial properties remain empty and volunteers at the recently re-opened Tourist Information Office report that the most common question is 'Where can I get a cup of tea?'

Cardynham House has been bought by a business known as Architecture Retreats, specialising in week-long group-retreats for historically significant UK houses. It has other properties in Padstow, the Devon Coast, the Peak District and the Lake District. Their customers are typically multigenerational family, corporate groups or family groups travelling together. Tom Leahy, of Parti architects, representing the business, says that the change to its planning category is essential for the continuing commercial viability of the property. There will though, he says, be benefits for the local community, with the front room used for various activities, including exhibitions, supper clubs with rotating guest chefs, and possibly visiting readings, performances and 'salon opera'. Neighbouring residents and businesses seem less convinced and one characterises the plans as establishing a large-scale party house in the centre of Painswick, with no parking provision.



An internal view of works at Cardynham House - photo Parti Architects. The approved work aims to restore the building to its original dwelling plan.

The applications for change of use (S.21/0805/FUL and S.21/0806/LBC) were submitted on 29th March, validated on 4th May, with further information submitted on 18th June. As at 25th August they had not been decided.

On our inside pages

Page 7

Can you recognise these faces from over 50 years ago?



Page 10

Do you know what this locally available foodstuff is?



Page 11

Look what's landed at the Croft School!



PARISH COUNCIL NEWS

Reports upon meetings of the Parish Council cannot help but be selective, if only because of space constraints. We try to highlight points of widest public interest, based upon what we see and hear.

The full minutes of Council and committee meetings are available for scrutiny at the Council's office and on-line at the Parish Council's web site.

There was no meeting of the Parish Council in August. Support for the following planning applications was communicated to Stroud District Council under delegated authority arrangements.

S.21/1767/HHOLD | Erection of two storey side extension | Jays Hill The Park
S.21/1489/HHOLD | Erection of pool house to replace existing structure | Court House Hale Lane

S.21/1490/LBC | Erection of pool house to replace existing structure | Court House Hale Lane

S.21/1675/HHOLD | Erection of single storey rear extension | 2 Gloucester Street

S.21/1815/HHOLD | Loft extension to provide access to roof space. Insertion of roof windows. | Allways Kingsmead
S.21/1766/LBC | Replacement windows to front (South) and side (East) elevations and removal of lean-to porch at rear of entrance gate. | Hambutts House Edge Road

S.21/1765/HHOLD | Replacement windows to front (South) and side (East) elevations and removal of lean-to porch at rear of entrance gate. | Hambutts House Edge Road

S.21/1826/FUL | Erection of a dwelling (Renewal of S.15/1002/FUL & S.18/1153/FUL) | Land Adjoining Greenacres Cheltenham Road

S.21/1852/HHOLD | Demolition of garages and rear extension. Erection of two storey rear extension & single storey front extension | Little Gables The Highlands

S.21/1855/HHOLD | Proposed detached cart shed garage | Yew Tree House Edge

S.21/1924/TPO | T1, T2, T3, T4, T5, T6, T7, T8, T9, T10, T11, T12, T13, T14, T15, T16, T17, T18 Dieback ashes - Fell. T19, T20, T21, T22, T23 Dead larches - Fell. Felled trees to be replaced with ten beech 1.5m high. Ash have dieback. One dead larch has already fallen into another tree & therefore a danger. | Castle Godwyn Paradise

News from Painswick Surgery

COVID-19 and Flu vaccinations

This year's flu vaccinations will start at the beginning of October 2021. It is not known at the moment if we will be combining this with a COVID-19 vaccination booster program for eligible patients. We await national guidance. Please check for updates on the surgery website. We will be sending out invitations via SMS messages. If you do not have a mobile phone, please call the surgery to book your flu vaccination – but not before Monday 13th September.

Evolving arrangements for appointments

Very slowly and very carefully, we are modifying the procedures for patients coming to the surgery for GP or Nurse's appointments. We have increased the number of patients allowed in the waiting room to six – any additional patients will be asked to wait outside until another patient has left the waiting room. We ask all patients to continue to use a mask when attending the surgery, to observe social distancing, and to follow any instructions from the Reception Team. GPs are now tending to see most of their patients in their own consulting rooms, rather than in the "Amber" or "Red" rooms, which were accessed via the rear car park. However, if a GP asks you to come in for an appointment, please do note whether or not you come to the front door.

New GP

The demand for GP appointments continues to increase. As a short term measure to get us through the winter period, the partners have employed another GP – Dr Kathryn Allbright, who used to be our GP Registrar. She will be with us until the end of March 2022.

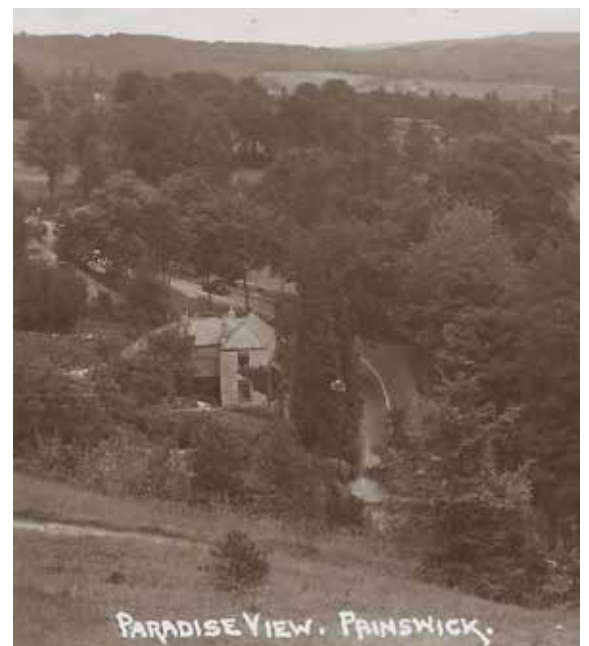
New Registrar

We are very pleased to welcome Dr Rebecca Coles as our next GP Registrar. She will be working at the Painswick Surgery until August 2022.

Michael Mack-Smith, Business Manager

Demolished

Another in our occasional series of photos of buildings in and around Painswick that no longer exist, this time features a house called Fir Bank that once stood alongside the bend of the A46 just above Paradise. It was demolished around the 1960s and the area is now covered in trees (see also Page 16).



CBS
INSURANCE BROKER
PERSONAL AND COMMERCIAL INSURANCE
FOR YOU, YOUR BUSINESS & YOUR FAMILY
www.cotswoldbroking.co.uk
07770 881 695

painswick osteopaths
Paul Stamp D.O. Helen Froggatt D.O.
Tel: 01452 301748
• Structural • Cranial Osteopathy
• Sports Injury • Neck, Shoulder, Hip, Knee
Parking Available

Landcare Services
Environmentally Sensitive
Tree Surgery
All Types of Tree Work Undertaken
Contact Zeb or Clare on
Phone 01452 812709
or 07969 918121
Clareoverhill@phonecoop.coop
WWW.Treesandlandcare.co.uk

Painswick comes back to life

(Continued from front page)

Do you remember when Painswick was positively pulsating with life and vitality? That of course was BC – before Covid. Things have been strangely, for Painswick at least, quiet and somewhat staid for the past few months. However, many will be relieved to know that that state of affairs is definitely on its way out and Painswick is coming back to life. Few local communities can boast such a wealth of interest groups covering an amazing range of activities. Our clubs, societies, classes and events cater for just about everyone and it is a joy to report that many of them will be back in action from now on. Some have decided to defer their re-start date for a few more weeks at which point relevant information will be forthcoming. The following list includes those which intend to be fully functioning very soon and, although detailed information of their times and activities is not given, a contact name and telephone number or email address is provided should you like to make enquiries.

Art classes	Lucinda Burgess info@lucindaburgess.plus.com	Naturalists' Field Club	Jane Rowe 813228
Art Club	Joyce Barrus 812942	Beacon conservation	Paul Baxter 07971633242
Badminton	MahboobHussain 813645 or 07831 216948 or smh801@gmail.com	Community choir	Sophie Sterckx 01453 298138 or sophie@sophiesterckx.co.uk
Badminton juniors	Rachel Bolt 812439	Painswick Probus	Ian Eastwood 813977 or eastwood629@btinternet.com
Ballet	Claire Tracey clairetracey1@gmail.com	Painswick Singers	Jean Jones 813545
Bellringers	Deborah Foreman 812306	Philatelic Society	Trevor Radway 813440
Bowling (P. Centre)	David Linsell 812464	Pilates	Heidi Hardy 07970262538
Bowling (Falcon)	David Glass 814186	Rugby	Chris Hall 814504
Children's dance	Heidi Hardy 07970 262538 or Julie 07970911103	Rugby juniors	Chris Bullingham 07825446259
Dog training	Fiona Chapman 812462	Sew Vintage	Sophie and Victoria sewvintage66@gmail.com
Friday Club	Ann Williams 812344	Short mat bowling	Mike Kerton 810878
Gardening Club	Debbie Grey 07802389304	Table tennis	David Linsell 812464
Golf Club	Ann Smith 812180	T'ai Chi	Jeff Docherty 07970303694 or jeffdocherty@yahoo.com
Jewellery workshop	Alice Huggins painswickjworkshop@icloud.com	Tennis	Ruth Smith 813693
Local History Society	Al Jollans 814263 or enquiries@ painswicklocalhistorysociety.org.uk	Yew Trees WI	Naomi Dunn 812711
Monday morning walks	Jane Rowe 813228	Yoga	Kim Brockett 07973 504593 or 812623 yoginikim@icloud.com
Music Appreciation	HowardAllen812638orHowardallen80@ btinternet.com (starts 14th October)	Zumba	Martina Ellis 01453 450548 or 07766 101790
Music Society	David Homer 01453 882993		

After such a drawn out period of relative inactivity perhaps now is a good time to think seriously about resuming a past interest or learning a new skill or even considering a completely new activity. With so many groups and classes back in action Painswick's erstwhile vitality and great community spirit is definitely thriving for the benefit of us all.

Carol Maxwell

Directory 2022 – it's your call

The Painswick Directory is delivered every year with the January issue of the Beacon. It is free of charge. Providing a very valuable source of information for both residents and our visitors, it is also, of course, of great benefit to those businesses, services, clubs, societies, agencies etc which are included in its pages. A copy is posted on our website too which continues to receive 'hits', not least from people moving into the area.

If you run a business, service, society etc it is in your interest to ensure that the relevant and correct details are entered in the next edition. We depend entirely on the information given to us by club secretaries, business proprietors and so on, and need these details as soon as possible if you wish to be included in the 2022 edition. Inclusion costs you nothing. If you are already in, please check the details and let us know if there are any changes to be made. Out-of-date and incorrect information is most irritating for all concerned. If you wish your entry to be removed, or if you are aware of an entry that is no longer valid, you should let us know as soon as possible.

This is a free community resource and it is important that it is up-to-date, comprehensive and accurate. Please send your details, or relevant information about any entry to directory.beacon@painswick.net or to beacon@painswick.net or to Carol Maxwell at carolmaxwell@talktalk.net or post in the Beacon box in New Street as soon as possible.

Carol Maxwell




Kate Rich
walks Painswick's
'Diamond Dogs'
Stimulating Dog Walks
that include the best 'sniffy places' to
delight your dog

Also: Bespoke Dog Sitting Service
Tel: 07785 562616
www.katerich.co.uk

CENTRELINE



STONEMASONRY
HISTORIC
BUILDING
REPAIRS
& ALTERATIONS

01452 813892 OR 07967 316038
WWW.CENTRELINESTONE.CO.UK

Fairfax House, Vicarage Street, Painswick, G16 6XS

Peter Barnfield
Painter & Decorator

All Interior, Exterior + most DIY work
30 years experience
10% off for NEW customers



Tel: 01452 610199
Mob: 07881 408380
Email: barnfield.peter2@gmail.com

Local history comes to life



Have you enjoyed recent articles in the Beacon on aspects of Painswick's local history? With the absence of many of our other activities in the village, local history has perhaps had more prominence than usual. There have been articles on historic crimes, on some of the prominent personalities from Painswick's past, on buildings now demolished and a selection of photos from the archives of the Beacon as well as the Local History Society.

Now with the end of lockdown, Painswick's Local History Society is emerging again and resuming its programme of regular meetings. Why not come along, hear the talks and meet other people with an interest in Painswick's colourful past? Meetings are held at The Croft School on the third Tuesday of each month (except December and in summer). Meetings rarely last for much more than an hour and a bit. Membership is just £10 for the season, or £15 for a couple, or for individual meetings there is a charge of £4 (waived for the first meeting of the new season as a taster). The Society's annual publication, the Painswick Chronicle is available to members at a reduced price and now in its 24th year, has become almost the Painswickipedia. For more information on membership, contact the Society's membership secretary Sylvia Steer on steer5@tiscali.co.uk

The first meeting of the new season will be on Tuesday 21st September, 7.30pm at The Croft School when Malcolm Watkins will be talking about the Birdlip Grave Group. In 1879 workmen discovered three skeletons in a quarry between Crickley and Birdlip, and with the bones some amazing Iron Age artefacts including a handheld mirror in polished bronze, one of the finest examples of Celtic art to survive in Britain. It is held in Gloucester, where Malcolm was previously responsible for the City's archaeological collections.

Alastair Jollans



The decorated side of the Birdlip mirror

Yew Trees WI

Ladies - would you like to join a group of women in the village which offers a range of activities as diverse as its members?

Perhaps you have an interest in going to the theatre, eating out with friends, attending meetings with speakers covering a wide range of topics (a recent meeting on Zoom introduced us all to sword swallowing!), or perhaps you like socialising at a coffee morning or supper evening, going on walks, taking part in quizzes or perhaps playing a sport such as bowls or skittles? You could use your organisational skills in helping to prepare and plan our activities.

These are just a few examples of what is on offer if you join the W.I. We are a friendly and welcoming group of women who meet formally once a month on a Tuesday evening. If you have transportation problems, we can collect you from and return you to your home.

If you are interested in finding out more and possibly joining this group of friendly and laidback ladies, why not give Janet a ring on 812724. We are so much more than just a monthly meeting!

However, our next meeting on Tuesday 28th September in the Church Rooms (starts at 7.30pm) is an open meeting where everyone is welcome. Frank Tunbridge will be talking to us about the 'Big Cats in the Stroud Valley'. So do bring your husbands and/or family members. Tickets are £4 for non-members. See you there!

Jennie Preece



Painswick Art Club



Painswick Art Club will be starting up again on Tuesday 14th September in the Church Rooms, 9:30 - 12:30 pm. Meeting every Tuesday morning, except in August, when we meet *en plein air*. We are a small, friendly group bringing in our own work to continue, at our own pace, in company. We can try to practise different techniques, media, styles and genre; and discuss and help each other. We are able to hang pictures on the walls throughout the year, have an exhibition, a visiting artist demonstration and perhaps an outing to an exhibition venue during the year. Pop in any time on a Tuesday morning and meet us. Perhaps join us, drawing and/or painting.

Joyce Barrus

Glen's Gleaming Windows & Property Maintenance

Come rain or shine...

07585 707114 / 01453 450319
GlensGleamingWindows@gmail.com
www.GlensGleamingWindows.co.uk

Revive Beauty
 Chloe McCarthy
 Tel: 07859 880641

Painswick Beauty Room Cranham Village Studio
 Three Gables Centre * New Location *
 Cheltenham Rd Thurs 9.30am - 6pm
 Tues 9.30 am - 7 pm Fri 9.30am - 2.30pm

www.revivepainswick.co.uk

THE SHARPENING SERVICE



Kitchen knives, garden tools,
 and most other blunt items!
 For a speedy turnaround

Call **Rupert Miles in Bisley**
01452 770788
milesrup@btinternet.com

Would you like to help shape the Centre's future?

We hope that you will have noticed that there has been quite a lot happening at The Painswick Centre over the past few months. The Centre now has a small but solid team of staff, overseen by a Board of Trustees, to work towards the charitable purpose of the Institute (as it was originally known): to improve the life of those living in and around Painswick by providing social, recreational and educational opportunities. Much effort has been put into getting new ideas and events off the ground to widen what the Centre offers, and there is an exciting period ahead. The AGM will take place in the Gardiner Room on 27th September at 7pm, to which everyone is welcome, and ahead of this it would be fantastic to receive nominations for new Trustees to bring in fresh perspectives and energy in shaping the role of the Centre over the next few years. If you would like to nominate yourself or anyone else as a Trustee, please email the Secretary at dawn.tyson@painswickcentre.com.



What's On at The Painswick Centre

This Summer has been a busy one at The Painswick Centre. We've thoroughly enjoyed hosting the Handmade in Painswick shop for the past three months, a wonderful collaborative effort between makers and artists from the valley, and we hope that they'll be back again in the future. We also welcomed circus performers into Painswick for a one-off show and workshop, continued with takeaway food nights, opened up the Art Studios on the weekends, and started new Bounce & Play sessions with a bouncy castle and soft play for younger children (we will continue with these as they've been so popular!). We also have a lot more planned for the next few months, so please head to our website and sign up to emails so you don't miss out: www.painswickcentre.com

Here's a taster of what's on this month (check our website, Facebook & Instagram for more details):

- If you fancy trying something new as the schools go back, as well as our regular yoga, Pilates & Zumba classes you will now also be able to learn Tai Chi with Joe. You don't need any experience and Joe has a lot of excellent testimonials from those who attend his other classes around the Cotswolds. (We also have Aikido if you want to try something very different!).
- Drawing classes start back at the Centre this month, and the Painswick Jewellery Workshop begins its one-off sessions to make and keep your own silver rings.
- Canton Acre Promotions is finally able to bring folk music back to the Centre, and is kicking off with the legendary and multi-award winning Phil Beer on 18th September.

Susie Andrews

Parking at The Painswick Centre

During August we had a particularly disturbing case of rude and abusive behaviour towards a staff member by someone parking illegitimately in the car park. Disappointingly it was committed by someone connected to the village. The Trustees take a zero-tolerance approach to this kind of behaviour and hope that it will not recur.

The Painswick Centre was given to the village in 1907 with a charitable remit to provide education and recreation for the community. Our primary purpose continues to be providing as many opportunities for as many members of the community as possible. While we recognise that parking in the village is frequently an issue, there was no car park when the Centre was built and any car parking we are able to provide today is secondary to our role as a community hub. The current spaces are frequently not enough for people attending the Centre, let alone for the wider public. We must remind everyone that the Centre car park is for the use of permit holders and those attending activities at the Centre only, and this is on a first-come first-served basis. As the signage in the car park explains, we have a contract with a parking management company and from now on those using the car park illegitimately will be fined without additional warning. We thank you for your support on this matter.

The Trustees



Tell us what you want to see at Wick-Flix!

Before Covid, one of the highlights of the village calendar was Wick-Flix, the monthly community cinema night showing some of the latest releases. The Painswick Centre has always strived to put on a wide variety of events and activities for the community, whilst ensuring the upkeep of the buildings. Therefore, entertainments such as Wick-Flix must be both practically and financially viable. The popularity of Wick-Flix, according to previous surveys, has been due to the presentation style, our wonderful volunteers and the cost of the tickets, all made possible by our generous sponsors. Covid has had devastating effects on businesses generally and therefore there is no guarantee they will be able to support Wick-Flix to the same degree just yet!

We would like to establish how our previous and prospective audience feel about all aspects of Wick-Flix to help inform what it might look like going forward. Please spend a few minutes to help: visit www.painswickcentre.com/wick-flix and click on the link to answer a short questionnaire. Paper copies will be available from the Centre office during opening hours (Tues/Weds/Thurs 9.30-12.30).

Allyson Davis

**Unique
GLASS
Solutions**

Glass Balustrades, Juliet Balconies
Shower Screens, Splash backs
Glass doors and Screens, Mirrors

07717 741 275
Simon@uniqueglasssolutions.co.uk
www.uniqueglasssolutions.co.uk
Painswick based

ROSSA AUTO
Motor Mechanic

07753 351225

MOT's, Servicing, Repairs, Diagnostics
ALL MAKES AND MODELS

FREE COLLECTION AND DELIVERY
FROM YOUR HOME (PAINSWICK AREA)

Unit 27 Wayside Farm, The Camp, Stroud
GL6 7EW rossaalfie@gmail.com

LAWNMOWERS
Serviced Sharpened Repaired
Also: chain saws, rotavators, hedge-trimmers, etc
Collection and delivery service

**CHELTENHAM
MOWERS LTD**

01452 616169
Unit B3, Nexus, Hurricane Road
Gloucester Business Park, Gloucester GL3 4AG
Visit and Buy on-line at
www.mowers-online.co.uk

News from St Mary's

When the Julian calendar was replaced by the Gregorian calendar in 1752 Painswick did not change its feast day of St Mary the Virgin, the patron saint of our church. Hence we celebrate this feast on 19th September or the Sunday immediately following. This year it falls on Sunday 19th September which is Painswick's Feast Day. At St Mary's we celebrate this feast at the annual Clypping Service which takes place in the churchyard at 3pm.

Clypping is an ancient Anglo Saxon word meaning to embrace. During this service the assembled congregation surround (embrace) the church symbolising that we are embraced by the church from the cradle to the grave.

The service on 19th September will be addressed by The Bishop of Tewkesbury The Right Revd Robert Springett. It is an informal and family occasion in the churchyard and all parishioners and visitors are invited to join in.

Many couples had to postpone their wedding day in 2020 due to Covid 19 restrictions. Most of those restrictions have been relaxed now including the limit on the numbers attending the wedding. A feature of our services at St Mary's recently has been the reading of marriage banns again. There were three weddings in August and there are two more planned for this month.

On a sadder note we report the death of Reigh Sutton at the age of 99. We are thankful for the loyal service Reigh gave to the church and to The British Legion over many years. Frankie Marsh died in March of this year and a Thanksgiving Service for her life will be held at St Mary's on 14th September at 12 o'clock.

David Newell

Community Lunches

Community Lunches will not be able to commence in October but we do hope to restart in January 2022.

We appreciate the effort put in each week by our various hosts, representatives of many Painswick Clubs and Organisations and look forward to welcoming you back along with our loyal supporters. We are aware of various changes to these clubs and organisations and it is essential for us to know of those who are prepared to take part again in providing soup, bread and cheese in a friendly environment whilst raising funds for local charities. To enable these lunches to continue would representatives of the organisations involved please make contact with us.

Mary Sparks 01452 814169 swallowsnest@talktalk.net
David Linsell 01452 812464



Anne-Marie Randall
PHOTOGRAPHY
www.amrandall.com / 07815082209

Gloucester Paper Services
NEWSPAPER AND MAGAZINE
HOME DELIVERY SERVICE



Please call
07739 926421
or visit
www.gloucesterpaperservices.com

Already delivering to over 130 households in
Painswick and surrounding areas every day

Tree Surgery
Garden Maintenance
Seasoned Firewood

Garden maintenance Fencing
Hedge trimming Patio cleaning

Fraser Hall
Brookthorpe Gloucestershire
07766 132903
Fully qualified and insured

Foodbank collection

After a pause of some months, the Painswick collections for the foodbank are now planned to resume. The next one will be on Wednesday September 15th, 10am – 12 noon by the stocks outside St Mary's church and in Stamages car park.

The main reason for the pause was that the foodbank had to move out of their warehouse at the end of July. The warehouse is the hub of the operations, where all the food is taken to, sorted and then sent out. It also acts as the foodbank's office. However, the building, owned by Stroud District Council, is due to be demolished so a new warehouse has had to be found and then all the food, shelving, weighing machines, computers etc. dismantled and relocated, while keeping the show on the road to distribute food to those in crisis. This was achieved by a wonderful team of volunteers, proving yet again what fantastic support there is for the foodbank in this area.

We would be very grateful for donations of tinned pulses, tinned potatoes, tinned spaghetti, cooking sauces, toiletries and sweet and savoury treats. Other items (within use by date) also always welcome but we currently have plenty of pasta, tea and cereal. We would be very grateful for your continuing help.

The Painswick Foodbank Committee

Painswick Upholstery classes with Sew Vintage

Our new term of 5 week Upholstery classes start on the 6th of September. Learn a new skill by traditionally upholstering a piece of your own furniture in a fun relaxed environment.

Saturday Upholstery School 11th September - These classes are an opportunity for anyone wishing to get a really good run at working on their chosen piece of furniture. Beginners or more experienced upholsterers are welcome.

25th September - Introduction to Upholstery - On our one day traditional upholstery course you will learn the skills and methods needed to upholster traditional furniture. These basic skills are a great foundation to build on for more advanced upholstery and future projects.

6th November - Bespoke footstool workshop - During this one day course, you will be working on a craftsman made frame and guided through the process of creating a beautiful footstool, learning many valuable techniques that you can take through to other projects in the future.

27th November - Box Cushion Workshop
On our one-day course, you will be taught how to create a professionally finished box cushion. You will leave with your sample cushion and the confidence to create beautiful, bespoke box cushions.

For details contact: www.sew-vintage.co.uk sewvintage66@gmail.com

Sophie and Victoria

Painswick Feast 2021

Sunday 19th September, 11am – 5pm

With a Feast and the Clypping service, what more could you want for an event to bring the local community together and celebrate Painswick in the traditional way.

- Try the legendary Puppy Dog Pie or sample other delicious savoury and sweet foodie stalls, with fine coffee provided by The Box.
- Gather your apples for pressing on the day by the Painswick Orchard Group (and bring a container to take it home).
- Sit on the straw bales or hang out at The Oak's bar and listen to some live music, from the medieval Gloucester Waites to a local folk band.
- From local honey to dried flowers, you can browse and support an array of local craft and produce stalls.
- With local groups and charities represented, you can join a community group or support their endeavours.
- Bells ring and banners are raised for the procession ahead of the Clypping Service at 3pm; a special Clypping bun is presented to children at the end of the service, and with free tea and coffee served in the church a warm welcome is extended to everyone.

We look forward to feasting with you and celebrating the amazing community in which we live, at a unique event that can only happen in Painswick.

Abigail Smith

Road closure Beech Lane

Beech Lane is expected to be closed from outside the entrance to Dell Farm to the junction with Longridge, on 20th September, in order to locate and resolve damaged ducting.



... and how it used to be

The photo below, kindly provided by Sue Jones, was taken at the Clipping Service (as it was then called) in around 1964/5 and shows (l to r) from the front - Pam Collins (née Hulme), Philip Hulme and Valerie Jones. 2nd row Carol Jones and the late Angela Paull (née Hulme). Alan Weeks carrying the cross. Possibly Robert Barnfield hidden behind the banner and Linda Jennings partly in view beside it. Behind them and an unknown small boy, Elizabeth Webb and Sue Jones (née Wear). Please let us know of any other names, or corrections.



Gardening Pride

M: 07583 125257 H: 01452 770433

We offer a wide variety of both hard and soft landscaping services

Decking, fencing, patios, driveways, walling, turfing, garden edging, mowing, strimming, hedge trimming, tree work and much more

Quality topsoil, compost and other aggregates can be delivered direct to you.

Call Ralph for a FREE quotation

Sarah Murray
English Tutor
Call: 07870 967 359
Painswick based



Experienced teacher of English literature and language. Examiner at GCSE with extensive knowledge of how to improve grades. Specialist in raising confidence. Available one-on-one or in small groups. Adult literacy and spoken English also taught.

Ben Pearse Carpentry

Offering a complete woodworking service including kitchens, staircases, doors, windows, built in furniture, wood flooring and all aspects of carpentry

Qualified and Insured

Tel: 07791 639635

Ben.pearse@hotmail.com
www.benpearsecarpentry.co.uk



Pressed 2 Perfection

The premier ironing service

- ✓ Free pick up & delivery
- ✓ Special rates for B&Bs

Viki: 07976 400139
info@pressed2perfection.com

Call in the perfect solution!
www.pressed2perfection.com

WOODCHESTER VALLEY



THE COTSWOLDS
VINEYARD AND WINERY

07523 967 219

www.woodchestervalleyvineyard.co.uk

TOURS . TASTINGS . SHOP



Frankie Marsh (1948-2021)

Former Churchwarden of St Mary's

Frances (widely known as Frankie) moved to the Highlands in 1983 with her husband, Ian and their three sons and was well known in the Painswick community in many different roles. In the 1980s she not only taught from time to time at the Croft School, but was deputy Chair of Governors (under Dr Jim Hoyland) and on the FoCS committee. She was a keen member of the Painswick Tennis Club representing them many times, mainly in the Ladies B and C teams. On their return from 4 years living in Chicago, USA in 1993, she quickly picked up again on those interests and tried hard to fit in such commitments whilst splitting her time between Windsor (where her husband was working) and Painswick.

She took on the role of Churchwarden at St Mary's in 2004 and served until 2010. She was very much involved during that time in the setting up of PSALMS, the sports ministry project initiated in Painswick in 2005 for our young people and now operating across the County. She was hugely valued for her mass catering at residential camps like TRAC, but also for the excellent meals provided during the Alpha courses run from 1999 to 2005, one of which she led. In more recent years, she was a Trustee of the Christian Counselling Charity, Listening Post as well as becoming a Street Pastor supporting (mainly) young people on the streets of Gloucester between 10pm and often 4am at weekends. Frankie's deep and practical Christian faith was central to who she was and all that she did.



Frankie was born into a keen sporting family in Buckinghamshire. Her father was an MCC Cricketer, her uncle opened for England. Another Uncle played rugby for Oxford, another twice rowed in the Olympics. Sport was a key part of her own life and she passed on those sporting genes to her sons (two received Rugby Blues at Oxford) and her grandchildren (one recently made his Premiership debut for Gloucester). A Celebration of her life is scheduled for Noon on September 14th at St Mary's and afterwards at the Tennis/ Rugby Club at Broadham. All who would like to remember her are welcome.

Ian Marsh

Some September crimes from the past

September 1831. Mother and son - same crime, such different outcomes. Sarah Lane, age 40, a labourer, together with Thomas Lane, age 19, a servant, both able to read and write, charged with having 'feloniously and burglariously broken and entered the house of Benjamin Turnbull and stolen 40 gold seals, 50 gold rings, one silver watch, four smelling bottles with gold tops and other articles.' She was found not guilty but he was guilty and sentenced to seven years transportation.

In the same month Thomas Twinning, a labourer, was found guilty of assaulting Thomas West of Painswick and fined £5 or two months hard labour in Horsley House of Correction.

Fifty years later, 1881, brought forth a veritable bevy of cases. The following are summaries of just three of them.

John Bradshaw, a successful Painswick carrier, was the defendant in a very detailed case involving cruelty to a horse. The injuries were extreme and very serious and finally, despite promises made by Bradshaw to deal with the horse humanely, he was sentenced to imprisonment for one month with hard labour. This was his seventh such offence.

Three families were embroiled in a court case in what The Citizen newspaper headlined A Neighbourly Feud. Various members of the Halliday, Birt and Thrush families were charged with assaulting one another on the evening of 16th September after a boy from each family had initially been involved in a physical scuffle in Vicarage Street. It would appear that the parents and brothers subsequently sought each other out and engaged in further fighting. Three lots of fines were issued.

Painswick Feast day resulted in some heavy fines for drunkenness in 1881. William Wallace and Alfred Beard were both lying outside the Golden Heart in Tibbiwell in a drunken state and covered with blood. Henry Cole, a Gloucester man, was drunk in Bisley Street near the Fleece Inn. Apparently he was swearing and challenging 'the two best men in Painswick' to fight him. A somewhat different spectacle from the proceedings at today's Feast/Clipping occasions!

Carol Maxwell

St Michaels
BISTRO

Lunches: Wed - Sun 12.00 - 15.00
Evenings: Tue - Sun 18.30 - 22.00

tel: 01452 203306
07877 282 446

marinpetre1967@gmail.com

Take-aways available

Resthaven offers 24 hour residential and nursing care set amidst some of the finest countryside in Gloucestershire with panoramic views over the Painswick valley.

For more information please call 01452 812682 or visit: www.lillianfaithfull.co.uk/resthaven

Resthaven is part of the charity Lillian Faithfull Care
Registered Charity No: 1122183

A surprise discovery

Brickmaking in Painswick

Browsing through old newspapers can often turn up some real surprises. The Stroud News for 4th December 1874 advertised a sale by auction of a working brickyard in Painswick. A small brickworks has been recorded in Cranham, but who would have expected to find one in Painswick with its abundance of good quality building stone?

These brickworks were situated at Landmoor, on the Stroud Road which, until 1871, had formed part of Jenkins Farm, owned by the Caruthers Little family. It was purchased by James Bridgman, a tiler and plasterer from Painswick and in 1875 he sold it on to John Harper, a builder from Paganhill. The advert stated that the site was full of good brick earth (clay) and had been worked as a brickyard, whilst the related conveyance refers to premises, moulds, wheelbarrows, planks, tarpaulin, and other articles used for making bricks. Harper built the house, Landmoor, but retained ownership of the whole site until 1895 when it was sold off as a private residence. It can be seen that it was quite a small enterprise which lasted for at most 20-25 years.



A small brickworks in Essex, c1901

Brick-making was a lengthy process and required a plentiful supply of water, which may partly explain the choice of this site with the Washbrook forming part of the boundary. The first stage was to remove any stones from the clay by mixing it with water in a pit, the stones falling to the bottom and the clay/water mix run off into a shallow pond, where the clay slowly sank to the bottom allowing the water to be drained away. The clay was then allowed to weather for a few months, then mixed with water again in a pug mill, which squeezed the clay out in a malleable form. The clay was then placed in wooden moulds, and turned out as a 'green brick' which was stacked in a drying shed to allow the air and wind to dry them out (if bricks were too wet when fired they could explode). The final stage was the firing of the bricks, originally done in clamps like a charcoal burner, but now usually in kilns. The bricks were baked for five or six days, with firing necessary day and night for perhaps three days.

It seems almost certain that the house 'Landmoor' is built of bricks made on the site, but are there any other examples remaining? Bridgman was a tiler so it is possible that he made his own tiles, but we have no knowledge of whether he was involved with roof or decorative tiles.

Alan Fielder

Painswick Monday Morning Walking group

The Monday Morning Walking Group has been back in action since the lifting of lockdown and the removal of restrictions on group size.

We meet at 10 am every Monday (except Christmas Day) in Stamages Lane car park. We have no formal leader, instead, we take up the most appealing route suggestion on the day. We walk for about 2 - 2½ hours on average, much of which involves steep hills and valleys, footpaths tracks and stiles. Some walkers peel off early if they want to return home before the rest of the group.

The group has been in operation for many years, and certainly far longer than the 25 years that I've lived in Painswick. We are an entirely informal group of walkers, with no formal membership, no subscription, and no insurance. Each of us accepts that we walk at our own risk, arriving at the start suitably shod and clothed, ready for whatever the weather throws at us, and conditions underfoot. Carrying a bottle of water is advisable

If you would like to walk with the group, please come along on Monday morning at 10 am. The conversation and company are always enjoyable. For more information, please feel free to contact me.

Jane E Rowe, Co-ordinator, 813228

ALL STONEMASONRY LTD
EXPERTS IN STONE

Drystone Walling; new and restoration
Stone repointing; including lime mortar
Mullion Windows Restored
Any stone repaired or replaced
Local masons with 40 years experience

01452 728949
alan@allstonemasons.com
For Your Quotation / Advice

P.L. ALLARD
BUILDING & ROOFING LTD.
Specialists in Period & Modern Property

Cotwold Stone Tiling	Interior Renovation
Natural Slate	Bathrooms & Kitchens
Woodstoves	Chimney Repairs
Guttering & Leadworks	General Building

T. 01452 814278 M. 07841 695705
www.allardbuilders.com p.allardbuilders@gmail.com

Your qualified local electrician

MJ Boon
Electrical

07773 626241
matt@mjboonelectrical.co.uk
www.mjboonelectrical.co.uk

- Free estimates and advice
- All aspects of electrical work undertaken

MCIBIC
DOMESTIC INSTALLER

A Delightful Nip of Autumn



To my mind, the Garden looks particularly wonderful at this time of the year. With our massive beech trees starting to turn on the hill and the Kitchen Garden below gaining all those browns and russet colours... that's a full palette for the artist! There's a nip in the air and if you get to the Garden in the morning you can experience the turning of the season with all its mists and mellow fruitfulness. During September we are open five days a week, Wednesday to Sunday, and we are lifting the advance booking system for the time being as we're past the busy holiday period.

Work and forward planning continues with staff and volunteers undertaking bulb planting this month for next year's spring display. Our main aim is to increase the number of daffodils and tulips in the Orchards and in the Exedra Garden. All being well, work will also begin on the repair and painting of the Eagle House, a project we've had to delay due to the pandemic but which has been made possible thanks to a generous legacy.

The range of goodies in our lovely Shop continues to expand, many inspired by the garden. New this month is a limited edition Rococo Garden gin featuring raspberries & rosemary from the Kitchen Garden. Made for us by Sibling Gin, we have just 55 bottles available. It's a perfect - and stunning pink - reminder of summer, especially with an elderflower tonic!

Our final open air production of the season is *The Importance of Being Earnest* by the team behind the *Handlebards* on Thursday 9th September. There were still some tickets left at the time of writing and I commend it to you as an opportunity to experience high comedy in our wonderful natural amphitheatre in the Field above the Garden.

That's it for this month. Enjoy the early days of autumn and I hope to see you soon in the Garden

Tim Toghill, trustee & volunteer

Jottings

The other morning on going to see our cattle, I stopped my truck by the gate to the field and stepped out next to a bank of Fullers earth. I noticed a small hole had been dug and surrounding this was a small heap of soil. I counted more than sixty such holes, some with small bees hovering around. I am told that this is a species of ground bee which digs a hole, lays an egg and adds some pollen/nectar before sealing it. We recognise Bumblebees, but there are more than 250 species of bees in the country, of which only 24 are bumblebees. They are all important for pollinating our crop foods. When growing tomatoes in greenhouses became commercial in Spain, growers hand pollinated the flowers, but this was very labour intensive. They now buy in hives of bees to put in the greenhouses to do the job. Insects are essential for food, particularly fruit, production. If numbers continue to decline because of the use of chemicals, we will not be able to produce food to eat or seed to grow future crops.



A pignut (after cleaning)

PAINSWICK HOME & GARDEN

Renovation & Maintenance

- Lawns, hedges, fences, borders
- Landscaping, paving, stonework
- Bespoke-built log stores & bin stores
- Decorating, home repairs & *lots more!*

Find Us on Facebook **Call: 07532 11114**

www.painswickhomeandgarden.com

We have a wild plant called pignut growing in our permanent pastures. It is a member of the carrot family and an "indicator plant" meaning that it is found in fields which have not been ploughed or treated with chemicals: the ground has been left alone for many years. It is a perennial, coming up each year and gradually building up brown tubers underground. These look like chestnuts and in days gone by children would suck them like gobstoppers, and play marbles with them. They are popular with wild food foragers, tasting a little like hazelnuts. Many times people have tried to develop this plant for human consumption but as yet nobody has succeeded, because it will not grow in cultivated ground. Yields are low and it is difficult to harvest. In fact, it is called the pignut because pigs could smell them and dig them up to eat. At one time pigs were trained to dig them up like truffles. They also appear in Shakespeare's *The Tempest*: "I prithee, let me bring thee where crabs grow; and I with my long nails will dig thee pignuts".

Martin Slinger

CHORLEY'S

YOUR LOCAL FINE ART AUCTIONEER

Free auction valuations
Regular fine art & antiques sales
Insurance & probate valuations

01452 344499
enquiries@chorleys.com
www.chorleys.com

PRINKNASH ABBEY PARK, NEAR PAINSWICK, GL4 8EU

SUZANNE

Hairdressing
M 07597 100084
The Wellness Spa
01452 810211

Fabulous View
Window Cleaning in the Cotswolds

Window Cleaning up to 40ft
Sky lights and Glass Roofs
Orangery Cleaning
Leaded glass
Gutter Clearances

A great reputation in Painswick and surrounding villages since 2004. Fully insured.

Call Philip Lines today for a quote **07722 003302**
Visit us at www.fabulousview.co.uk

The Play Fort is in

We are delighted to say that the new play fort at school has been fully installed. It's looking amazing and will be such a treat for the children when school recommences in September. Our 'Fund our Fort' raised an amazing £4,500 and there are still some gift aid donations to be reclaimed from HMRC; a huge thank you to everyone involved. At this stage we're not sure what we'll be fundraising for next, but we will sit down with the school in the new academic year and determine the priorities.



September is a time of change for the Friends of the Croft School (FOTCS). It's when we hold our AGM, discuss what we've achieved in the past 12 months (a lot given it was a year of Covid!), and elect a new committee. Indications are that most of the current committee will be stepping down this year due to changes in circumstances, so we will desperately need to recruit new members. If you are an existing or new parent at the Croft, please consider joining FOTCS. There are many roles available and they need not take up too much time. It can be something as simple as organising the Christmas disco, to something more complicated like project managing a summer fayre. Or maybe you'd like to help with school uniform, be the main liaison between FOTCS and school, or perhaps you have key skills like social media or design that could be put to good use. Either way, we would love to welcome new members and keep FOTCS running. Contact us for more information at fotcspainswick@gmail.com.

Finally, if anyone has any good condition school uniform they would like to donate to FOTCS please email us at fotcspainswick@gmail.com. Likewise if you're in need of any uniform, please email us and we'll see what we have in stock.

Alison Smith, Co-Chair, Friends of the Croft School.

Volunteers paint classrooms at the Croft School



Over two long weekends in August, a team of volunteers have been painting at the the Croft School. Under the guidance and leadership of David Harris, a Parent Governor, the walls and woodwork have been painted in the Buzzards, Owls, Seals and Hedgehogs classrooms as well as several of the communal areas.



David said "A massive well done and thank you to the whole painting team. Over the two weekends we have had 11 parents, 5 Governors, 2 grandparents, 2 teachers and 1 Head painting different parts of the school. It has made a massive difference and really brightened the up the classrooms". Rebecca Gore, Head of the school was delighted with the results. Rebecca said "It has been a brilliant community effort and the results are fantastic. The teachers and children will be excited to see their freshly painted classrooms. Thank you to all our volunteers"

Following these successful workdays, the Governors will plan more works over future holiday weekends.

Stephen Courts

**PAINSWICK
CURTAINS & BLINDS**

Vicki Moore

Beautiful, quality
curtains, blinds and soft furnishings
Custom made by hand

01452 810707
07810 646714
vicki@vmoore.co.uk

**THE MALHOUSE
Collective**

ANTIQUES & INTERIORS
SHOPPING • NEW CAFE

BRICK&BREW CAFE

themalhousecollective.co.uk
6-9 Salmon Springs, Stroud GL6 6NU
Telephone: 01453 755800

**LARWOOD
GARDEN SERVICES**

MOWING AND LAWN CARE
WEEDING, PRUNING AND PLANTING
HEDGE CUTTING AND CLEARANCE
FENCE AND SHED REPAIRS

TRUSTED LOCAL COMPANY, ESTABLISHED 1998.
FOR A FREE ESTIMATE CONTACT NEIL ON:

07816 496087
ENQUIRIES@LARWOOD.NET

Join us for 'the very beautiful to the very bizarre'

We are very pleased to be resuming meetings at the Painswick Centre. On



Wednesday 15th September at 2.30 pm, Bev Dennison will talk about 'Buying and Selling Antiques – 'from the very beautiful to the very bizarre'. From October, we return to our normal timetable of meetings on the first Wednesday afternoon of the month.

Denise Magauran has arranged a visit to Edward Jenner's Home, Museum & Garden at Berkeley, 'the birthplace of vaccination'. After training as a surgeon in London, 23-year-old Jenner returned to Berkeley. His early experiments included medicine, horticulture, and the natural world, achieving Fellowship of the Royal Society for a paper on the nesting habits of cuckoos. Then, in 1796, he carried out the world's first controlled vaccination against smallpox. Soon after he established a free vaccination clinic in the Temple of Vaccinia, a rustic hut still to be found in his peaceful garden. The day will also include visits to Berkeley Castle and St Mary's, a striking 13th century church, containing medieval wall paintings, detached tower, table tombs, and memorials to the Berkeley family and Jenner.

On 22nd September, I will lead a circular walk from Coates along the Thames and Severn Canal to the Sapperton Tunnel portal and to the Thames Head. In addition, Peter Cornish has re-scheduled the cancelled 2020 boat trip along the Kennet & Avon Canal to Claverton Pumping Station for 28th September.

Please contact me for further details of our programme. Membership costs £20, or £30 for a household, from now through to December 2022.

Jane E Rowe 813228



Painswick Singers, after an absence of 18 months due to Covid-19, are planning to restart our meetings on Monday 27th September. Richmond Painswick have very kindly again offered their facilities for us to use.

We sing a variety of music, usually chosen by our director and accompanist, Howard Williams, with input from the choir – Carols at Christmas, generally sacred music at Easter and assorted music - e.g. music from the shows etc in the Summer. We try to give 3 concerts a year, none of which are intimidating (I speak personally, as I was scared stiff when I first heard the word "concert"!). The singers are a friendly group and we welcome all voices. You don't have to be perfect singers, just be able to enjoy music. No auditions are required, just come along and have fun, which is what everybody needs after the last year and a half! It is all quite relaxed and enjoyable.

If you need more details, please telephone Jean Jones on 01452 813545. Otherwise, just turn up at the reception desk, Richmond, Painswick and you will be directed to the auditorium.

Jean Jones, Membership Secretary.

Friday Club is back – will you be there?



There is not much longer to wait for your afternoon Friday Club meetings. September 17th is the date for your Diary, 2.30pm start as usual in the lower hall of Painswick Town Hall.

We will be welcoming Clare and "Walks with Hawks" for our first session. More information on the programme for the remainder of 2021 will be available at this meeting. Like many other local groups, we will have to discuss some new ways of working in future - but there will certainly be tea and biscuits and a chance to catch up with everyone.

For those of you who are new or may not know of Friday Club, it started in about 1948, which may make it one of the oldest groups in the village. Initially it was known as Senior Circle but is now open to anyone over the age of 55 (but we won't be checking your birth certificate). Why not come and give it a try? There will be no change of membership until the start of 2022. Visitors and new members will be very welcome and a small charge will be made at the meeting. Look forward to seeing you there.

Pat Francis 813524

TURN TO US FOR HELP AND SUPPORT

In your time of need we'll take care of all the funeral arrangements.
Call us 24 hours a day.

- Funeral Plans • Memorials

PHILIP FORD & SON
FUNERAL DIRECTORS

01453 763592

OR

DAVID ARCHARD
01452 812103

Dirleton House, Cainscross Road
Stroud GL5 4ES

Part of Dignity plc. A British Company.

GROUNDWORKS - DRAINAGE
EQUESTRIAN WORKS
LAKES - PONDS - WATER FEATURES
FENCING - DECKING - HEDGING
DRIVEWAYS - PATIOS
TRADITIONAL BUILDING WORK
ALL PASSIONATELY UNDERTAKEN

GROUNDWORKS LANDSCAPING

BLC
BUILDING PROFESSIONALS

PLEASE CONTACT
BEN LIVING
01452 812036
07702 984711
enquiries@bhc.uk.com
www.bhc.uk.com

three gables
dental, holistic + beauty centre

- ▷ PREVENTATIVE AND COSMETIC DENTISTRY
- ▷ BEAUTY/FACIAL REJUVENATION
- ▷ STEPPING-STONES OSTEOPATHY

All in a relaxed and friendly environment with early, late and Saturday appointments available. On-site parking also available.

LET US BRIGHTEN UP YOUR SMILE

cheltenham rd painswick glos GL6 6XN
01452 814427
www.thethreegables.co.uk

Dexters Back on the Beacon



Having spent nearly five weeks on Cud Hill grazing for Upton St Leonards Parish Council our cows are now back on the Beacon. The move on the 4th August went smoothly as the cows are now becoming used to being handled. Some hay and a call were all that was needed to get them into a compound prior to being loaded into a trailer. The whole exercise took only ten minutes. They are now in a 5 hectare paddock at the Madams Wood end and have access to two water troughs. Warning signs on the paddock perimeter include a QR code which gives access to the NoFence system to show where the cows currently are. To date we are extremely pleased with how the system is working even though there were a few teething problems with the technology. So far we have had nothing but positive comments from walkers and golfers.

Despite the overall poor showing of butterflies this summer, two species seem to have done better. Gatekeeper numbers have been good but the Chalkhill Blues have been the best for years, with several strong colonies around the cemetery area. Horseshoe vetch, their food plant, was plentiful this year, so hopefully that bodes well for next year. It requires a short sward so grazing this area this winter can only help too.

Regular glow worm transects were undertaken this summer on the same section of the ramparts. Whilst numbers were lower than last year (another casualty of the cold, dry then wet spring?) they are still very good compared to other local sites and showed peak numbers from 9th - 20th July. New observations on other parts of the site indicate that small populations are quite widespread. Some research needs to be done to see if grazing will improve these populations. My gut feeling is it will as the ramparts are the most regularly grazed areas and they have the best glow worm numbers.

A moth trapping evening was organised in mid August with five different types of traps being used. The data hasn't yet been fully documented, but one trap alone recorded 80 different species. It is hoped to repeat this two or three times a year to build up a better picture of what moths live on the Beacon. Should we find a nationally rare one, it will strengthen our chances of funding from conservation bodies. On the same evening a bat detector recorded four different species of bat.

Work parties will start again on Sat 11th September and run fortnightly until Christmas. As usual, at the start of a new season, we appeal for new members to help make the Beacon a better place for wildlife. Do please, come and help.

Paul Baxter (M) 07971 633242

Painswick Probus Artificially intelligent



We extend a warm welcome to all existing members of Painswick Probus Club, returning on the 1st September, after meetings were suspended in late March 2020, due to the lockdown. We hope that our Newsletters have kept you in touch and that you are looking forward to our proposed programme for the next few months; starting on the 1st September with a talk by John Handby on Artificial Intelligence, the meetings will make provision for a variety of interests.

Probus caters for retired men providing stimulating talks and the opportunity to meet up with friends and meet new ones. In the first instance please contact Ian Eastwood, Secretary. (01452 813977 or eastwood629@btinternet.com)

The remaining programme for 2021 is as follows:

15th Sept	Arun Desai	A tale of 2 Islands
29th Sept	Paul Barnett	Dunkirk's Little Ships
6th Oct	AGM + Programme review with bar service after the meeting	
20th Oct	Bill King	West Country Defences in WWII
3rd Nov	Dr Tim Brain	The Gunpowder Plot
17th Nov	Bill Affleck	Pourquoi Pas Gallia Nova (Canada)
8th Dec	Christmas Dinner with The Ladies	

Mike Steed

Painswick Valleys Conservation Society Stroud District Local Plan Review

The Parish Council's concerns about the latest SDC Local Plan consultation were featured last month. This Society formally objected to the proposed elevation of the settlement status of Painswick (to tier 2), making it comparable with Nailsworth. We fear this will create pressure for unsuitable development in Painswick. Accordingly, we objected to the proposal in the Plan for twenty houses in Lower Washwell, which would adversely impact on the local environment, most particularly traffic.

The Parish Council's concern about the decline of Painswick's retail centre is shared by all. Unfortunately the planning system is a blunt tool in this respect and cannot prevent businesses closing, leaving premises empty. New Government legislation recognises this and encourages greater flexibility of use in retail centres. Only a reversal of current shopping habits and greater footfall in the town will salvage this situation. The recent 'Love Painswick' promotion of local talent is to be applauded.

Carolyn Luke

PAINTING & DECORATING

Domestic & Commercial
Internal & External
Gloucestershire & Cotswolds
Based in Painswick
Detailed quotes
Fully insured

Call Ken Ticehurst
07808 511066
glospaint.co.uk

WANT MORE FROM YOUR PC?

- PCs built for all requirements
- Repairs and maintenance
- Broadband set-up
- Virus removal
- Security checks
- Upgrades
- and much more ...

PC REPAIRS & MAINTENANCE
Based in Stroud

Call Rodger
tel 01453 766312
mob 07949 792501

www.pccomputerrepairs.co.uk

HORNE & PHIPPS

General Builders & Stone Masons
'The complete building service'

- Extensions, Renovations & New Build
- Carpentry
- Roofing
- Kitchens

Dave: **07743 194212 / 01453 872329**
Liam: **07540 246133**
Email: liam.phipps@hotmail.com

Painswick Sports

assembled by John Barrus

Painswick Tennis Club

Senior Championships

The club held its annual Championships during the second week of August where players enjoyed competitive tennis that was very well supported by many club members, family and friends. The finals were played in lovely sunshine on Saturday 14th. Congratulations to everyone who entered and the adult winners were: James Barnett (men's singles), Jamie Morgan and Graham Britton (men's doubles), Sara Bevan and Ginny Whitton (ladies doubles) and Andrew Harris and Angie Scott (mixed doubles).

Chris Scott and Ness Fair, Club Captains



Junior Championships

The Junior Club Championship took place, with the largest number of juniors entering on record. A mixed boy/girl green ball event gave our younger superstars a chance to shine, and shine they did. Congratulations to the eventual winner Aahan Ghosh and the runner-up, Sophie Compton.

A super competitive 14U boys event saw Felix Jack crowned as the winner, with Elliot Ransome as runner-up. In the 14U girls, Katie Harbord fought off all challengers to take the win with Olivia Deshais the runner-up. The 18U boys and 18U girls events saw our previous 14U champions moving up the age group to take the title once more, with Marcus White winning the boys event and Magnus Hall as runner-up, and Hannah Watkins winning the 18U girls event, with Isla Skelston as runner up.

Congratulations to all players on wonderful tennis. For further information on learning to play tennis, as a child or adult, please see www.painswicklhc.co.uk. We hope to see you soon.

Nick Watkins

Table Tennis

Table Tennis starts again on Wednesday 15th September, 7.00 to 9.00pm in the Beacon Hall at the Centre. Price still £5.00 only when you play.



The club supplies tables, nets, bats and balls. You supply sports or soft shoes, a sense of humour and a willingness to have some fun. Please do come and join us in this hand/eye co-ordination exercise and get fit at the same time.

David Linsell 812464

Badminton starting up

Painswick Badminton club starts the new season on Monday 6th September at 8pm. The club plays on Monday and Thursday evenings at the Painswick Centre.

New members are welcome and should phone Judith Todd 814400 or John Barrus 812942



Interiors & Gardens

www.cotswoldcontemporaryliving.com

Designed in Painswick 01452 814858

TOGETHERNESS MEANS EVERYTHING TO US AT RICHMOND VILLAGES

Move to a beautiful retirement property at Richmond Villages Painswick and enjoy all the benefits of a vibrant and sociable community, with a wealth of on-site facilities on your doorstep – perfect for reconnecting with family and friends.

Stroll through the landscaped gardens, catch up over a meal in the stunning restaurant and bar or enjoy sipping a glass of wine on the sunny terrace. There is even a Wellness Spa with pool and gym or simply pamper yourself with a luxurious beauty therapy in the hair, nail or beauty salon.

JOIN US FOR OUR OPEN DAY
Wednesday 15th September – By Appointment only
Call the Village Advisers today to book your appointment.

TALK TO US ABOUT OUR EASY MOVE HOME BUYING SERVICE & NEW LIFESTYLE FLEX

Tel: 01452 346 135 | www.richmond-villages.com/painswick Richmond Villages, Stroud Road, Painswick GL6 6UL

Painswick Cricket Club

Saturday league results focus for July/August. The battle continues in terms of league position for all our teams.

First Team

Close fought defeats against Bourton (George Macduff 55 runs), Rockhampton and Corse and Staunton were countered by victories over Cheltenham Civil Service (Jack Hobbis taking 5 wkts for 23 runs and Macduff scoring 63 runs), Thornbury 2nds (Ross Martin 83, Rogan Wolhuter 61 and Jack Hobbis 60, 4 wickets to Dave Boon and Sam Hewitt) and Apperley (Wolhuter and Macduff both scoring 64 runs and Hobbis taking 4 wkts).

The firsts currently lie in fourth position in what remains an extremely tight and close fought WEPL division.

Seconds

Painswick second team recently lost three in a row but then came back with a victory over Poulton (Dom Barnard 53 runs). They also sit in fourth in County League Div 7, a decent position considering they were only promoted last season.

Thirds

Three recent victories against Frampton, Stroud and Hawkesbury in the past few weeks have lifted Painswick Thirds away from the bottom of Stroud League division 2. Top performers were Steve Golding taking 4 wkts against Frampton and against Stroud. Youngster William Alder-Howells took 4 wkts against Hawkesbury with Chris Birch scoring 44 and James Elliot 46. Another youngster, Magnus Hall scored 66 runs against Stroud. The thirds currently sit mid table.

So a few league games remain for all our sides, please pop down on Saturday afternoon and enjoy some cricket if you can. Thank you for all your support throughout the season.

Steve Pegram



Painswick Golf Club

The club held a special General Meeting on 11th August to give members a chance to discuss activities in the club in person. The AGM earlier in the year had been held virtually. Improvements to the clubhouse and course and the much-needed purchase of equipment to maintain the course were welcomed. The proposed annual membership fee (£510) for the coming year was endorsed.

Since my last report, the Seniors Millennium Cup has been held. This is a Stableford competition. Brendan Nunan and Phil Jennings both had 41 points, but as Brendan had the better score on the last 9 holes, he was the winner. Congratulations to both for an excellent score.

Visitors are welcome at Painswick Golf Club. Golfers from round the country and further afield are often seen on the course. And the clubhouse is open for refreshments and meals for golfers and visitors. The clubhouse is also a popular venue for private events. For more details and to check availability, please call 01452 812180.

Peter Rowe



Painswick Short Mat Bowls

We are looking for new members. Give it a try, all you need are flat shoes and a sense of humour. Mondays at Painswick Town Hall. Please call us to find out when our free taster sessions are taking place:



Grace Howarth 01452 810918 Rita Hill 07393 489420

Sheepscombe Village Bridge

Yes – we are happy to say that Sheepscombe Bridge Club will be meeting again in the Hall from Thursday 9th September. Playing as before on the 2nd and 4th Thursdays of each month, with a possible extra session on any 5th Thursdays that occur. Doors will be open at 7 pm and we would love to see returning and any new members. Do contact Hugh on 01452 814081 (email h.tarran@tiscali.co.uk) or Joy on 07810 476 473 (email joyattheplough@gmail.com). More details to follow re any Covid restrictions in the Hall.

Joy Edwards



**MICHAEL GAMBLE
FUNERAL DIRECTORS**
An independent, family run business
A caring and personal service,
day and night
Station House, Station Road
Stroud. GL5 3AR
01453 790900
www.michaelgamble.net

PAUL A MORRIS
General Builder Ltd
Extension: Renovation: Stonework
Kitchens: Bathrooms: Patios
Dry-Stone Walling: Plumbing: Plastering
Over 25 years experience

paulmorrisbuilderltd@gmail.com
www.paulmorrisgeneralbuilding.co.uk
01452 814524 or 07818 087375



GODDARD'S GARAGE
Cheltenham Road Painswick
• Full servicing & repair facilities
• MOT preparation & repairs
• Private hire -
 local or long distance
• Petrol/ Diesel/ Tyres/ Exhausts
• Paraffin/ Coal/ Calor Gas
• Car valeting
• Air conditioning
Personal attention for your car
01452 812240
goddards.garage@hotmail.co.uk



Final call for flight south

On the last weekend in August, Trevor Radway spotted a group of what he estimated to be about 150 birds, apparently a mix of Swallows and House Martins, gathering on the wires in Kingsmill Lane, presumably on their flight south in search of warmer weather.

Most of Painswick's swifts seem to have already left.

Property Report

Two of the most impressive houses new to the market this month are found on the quiet Back Edge Lane. Back Edge Hall (Hamptons, £2.25 million) is a fine example of mid-17th century Cotswold architecture with 5 bedrooms and great views back towards Painswick. It was once the home of Bernard Ashwell, architect for Gloucester Cathedral, after whom Ashwell in Painswick is named. Further into Edge itself, Eastlea (Murrays, £1.65 million) is a six bedroom modern detached property with a large garden, built on part of what was in wartime one of the largest military tyre depots in the country.

Back in Painswick, but still just off Edge Lane, is Blakewell House (Hamptons, £1.75 million), a five bedroom detached house with off-road parking and garaging. And still in the million pound plus category, Greythwaite in the Highlands (Hamptons, £1.25 million) is a substantial family house with views towards Cranham and Sheepscombe, while The Red House in Lower Washwell (Hamptons, £1.5 million) has 6 bedrooms and a historic past as the Alexandra Home.

But not everyone can afford a million pound house! There are properties at a lower price level coming onto the market, but some are quickly going under offer including 11 Churchill Way (Murrays, £285,000) and Stable Cottage in Hale Lane (also Murrays). Hamptons have Howbeg on Stamages Lane (£900,000), which has been extensively renovated and improved, Welcome Cottage in Birdlip (£930,000) and two cottages at The Camp. And if you're the person who could revitalise Painswick's shopping scene, The Old Fleece in Bisley Street (Murrays, £425,000) has commercial space downstairs and a lovely two bed apartment above it that has been let as a holiday cottage by the National Trust in recent years.

Properties in Painswick that have gone under offer recently also include 2 Rock Cottages in Vicarage Street and 8 Canton Acre (both Murrays), Woodruff in Orchard Mead and Stonecroft in Hambutts Mead (both Hamptons). Contracts have been exchanged on Marling House in Gyde Road and the New House in Friday Street has both exchanged and completed.

MINI-ADS

A small **chest of drawers** - free. Good condition. 01452 814841

Pretty **Welsh Dresser**. Light Oak – perfect condition; 2 drawers, 2 door cupboard below, 2 display shelves. Height 1630, width 950, depth 420. £250 ono. Tel 01452 812093.

Mini-Ads

Primarily for Painswick residents
Text maximum 30 words. Flat charge £5.
Free to subscribers for private sales.
£5 for business use, holiday rentals, etc.
Provide text, your name, address and contact details with payment in advance
Deadline as for all copy (see back page).
More info: call Peter Rowe 813228, or email: advertising.beacon@painswick.net

The first name for property across the Stroud Valleys and the Vale

Murrays, a family firm with an innovative approach to marketing, and traditional values of personal service

Contact James or Richard Murray
Painswick Office 01452 814655
Stroud Office 01453 755552
Also at Minchinhampton and The Mayfair Office in London

www.murraysstateagents.co.uk

WITH YOU FOR EVERY STEP

Sales 01452 812354
Lettings 01242 263559
painswick@hamptons.co.uk

Hamptons
THE HOME EXPERTS

Call us in confidence for a **free valuation** and advice on all property matters

01452 812 054

jamespyle.co.uk
interested@jamespyle.co.uk

NAEA THE PROPERTY EXPERTS APPROVED CODE APLA

As life returns to normal, please let me know your dates for the diary on cvasp.26@gmail.com

September

Sun	5	Holy Communion	St Mary's Church	9.30am
Mon	6	Start of term for 5 week long upholstery class by Sew Vintage. For details sewvintage66@gmail.com	Painswick Centre	10.00am
Wed	8	Yew Trees WI Guided walk: Coates and Sapperton Tunnel. Enq Jane 813228	Coates	10.00am
Thurs	9	Importance of Being Earnest performed by Slapstick Picnic. Information from rococogarden.org.uk	Rococo Garden	Doors open 6pm, performance 7pm
Sat	11	Sew Vintage Saturday Upholstery School. For details sewvintage66@gmail.com	Painswick Centre	10.00am
Sun	12	Holy Communion	St Mary's Church	9.30am
Mon	13	Cotteswold Naturalists: Outing to Jenner Museum and Berkeley Castle. Enq Denise 814570	Stamages Car Park	
Wed	15	Cotteswold Naturalists: Bev Dennison - Buying and selling antiques. Enq 813228	Painswick Centre	2.30pm
Thurs	16	Painswick Music Society: Steven Isserlis (Cello) and Mischka Rushdie Momen (Piano). For info. contact Edward Bowron tickets@painswickmusicsoc.co.uk or tel 07789 006006	St Mary's Church	7pm
Fri	17	Friday Club: Walks with Hawks - talk and demonstration	Town Hall	2.30pm
Sun	19	Holy Communion	St Mary's Church	9.30am
Sun	19	Painswick Feast! Including Clypping service at 3pm	St Mary's Churchyard	11.00 - 5pm
Mon	20	Library Book Club	Library	1.30 - 2.30pm
Tues	21	Local History Society: Malcolm Watkins - 'The Birdlip Grave Group. A 2000 year mystery'	Croft School	7.30pm
Wed	22	Cotteswold Naturalists: Guided walk - Coates and Sapperton Tunnel. Enq Jane 813228	Coates	10.00am
	22	Bistro Night - 2 course meal followed by a magic show by The Great Baldini. £25.00 per person. Booking is essential - call 01452 813902 ext 214	Richmond Village restaurant	6.00 - 7.30pm
Sat	25	Introduction to Upholstery - one day course with Sew Vintage. For details sewvintage66@gmail.com	Painswick Centre	10.00am
Sun	26	Beacon praise	St Mary's Church	11.00am
	26	Holy Baptism	St Mary's Church	2.30/3.00pm
Tues	28	Yew Trees WI: Big cats in the Stroud Valleys - Frank Tunbridge. Open Meeting - all welcome	Church Rooms	7.00 for 7.30pm
	28	Cotteswold Naturalists: Outing - Kennet and Avon Canal Enq Peter 01453 823286	Stamages Car Park	
Wed	29	Bistro Night - 2 course meal followed by a magic show by The Great Baldini. £25.00 per person. Booking is essential - call 01452 813902 ext 214	Richmond Village restaurant	6.00 - 7.30pm

**Julian Telling
Garden Services**

****New Service - Green Waste Collection****
We supply 1 bulk (tonne) bag
You fill it, then call for collection - £15.00
Tree Felling, Pruning & Maintenance, Fence
Maintenance & Erection, Lawn Cutting,
Strimming, Turfing, Weed control, Hedge
Cutting & Shaping, General Garden Clearance
Gutters & Patios cleaned, Exterior Decorating

07895 224863

Juliantelling@yahoo.co.uk



Cotswold Animal Services

Home environment doggy day care and
boarding based in Painswick.
Group socialisation dog walks or 1-1's.
Equine care and cat sitting in your home.

+44 (0) 7814 955975

www.cotswoldanimalservices.co.uk

Maria's Mobile Hairdressing

Hairdressing service
in the comfort of your own home
For appointments
or advice please phone

07749 830398

or 01452 698423

BARBICIDE COVID-19 Certificate and PPE

PLANNING MATTERS

Information received from the Parish Council

NEW APPLICATIONS

S.21/1815/HHOLD Always, Kingsmead
Loft extension to provide access to roof space. Insertion of roof windows.
S.21/1766/LBC & S.21/1765/HHOLD Hambutts House, Edge Road
Replacement windows to front (South) and side (East) elevations and removal of lean-to porch at rear of entrance gate.
S.21/1826/FUL Land Adjoining Greenacres, Cheltenham Road
Erection of a dwelling (Renewal of S.15/1002/FUL & S.18/1153/FUL).
S.21/1852/HHOLD Little Gables, The Highlands
Demolition of garages and rear extension.
Erection of two storey rear extension & single storey front extension.
S.21/1855/HHOLD Yew Tree House, Edge
Proposed detached cart shed garage.
S.21/1924/TPO Castle Godwyn, Paradise
T1, T2, T3, T4, T5, T6, T7, T8, T9, T10, T11, T12, T13, T14, T15, T16, T17, T18 Dieback ashes - Fell. T19, T20, T21, T22, T23 Dead larches - Fell. Felled trees to be replaced with ten beech 1.5m high. Ash have dieback. One dead larch has already fallen into another tree & therefore a danger.
S.21/1781/FUL Castle Godwyn, Paradise
Erection of timber log store.

CONSENT

S.21/0897/HHOLD Knapp House, Far End, Sheepscombe
Single storey side extension and erection of attached carport and internal alterations.
S.21/1187/LBC & S.21/1186/HHOLD Rosebank Cottages, Slad Road, Slad
Erection of timber outbuilding, side extension and internal alterations
S.21/1311/HHOLD Cob House, Slad
Resubmission of S.20/0344/HHOLD and S.18/1620/HHOLD to include extensions to rear and porch, reconstruction of chimney stacks, additional dormer to

rear and redesign and relocation of garden room.
S.21/1412/HHOLD Swiss Cottages & Darkest Peru, Kings Mill Lane
Erection of single storey rear extension.
S.21/1421/HHOLD & S.21/1422/LBC Halfpenny Cottage, Tibbiwell Lane
Installation of dormer. Amendment to S.21/0212/HHOLD and S.21/0213/LBC.
S.21/1456/FUL Sheepscombe Cricket Club, Far End, Sheepscombe
Creation of levelled areas for practice for younger members and access for less abled visitors.
S.21/1413/HHOLD Upper Greenhouse, Greenhouse Lane
Conversion to annexe and installation of link to main dwelling.
S.21/1337/HHOLD Hawthorns, Longridge, Sheepscombe
Demolition of part of dwelling and replacement two storey extension and porch. Improve vehicular access.
S.21/1504/HHOLD The Homestead, Cheltenham Road, Replacement of garage (Resubmission of S.21/0825/HHOLD).
S.21/1415/HHOLD 2 Clattergrove, Painswick
Construction of rear dormer extension.
S.21/1282/HHOLD Castle Hale, Stamages Lane
Erection of canopy on North-East Elevation.
S.21/1517/TPO Lyncombe Farm, Cheltenham Road
T1, T2, G1, T4, T5 and T6. - Ash die back, Fell.
S.21/1597/HHOLD Folly Cottage, Gloucester Road
Erection of rear extension.
S.21/1554/LBC Stocks Cottage, St Mary's Street
Erection of infill extension, roof repair, installation of windows, dormers and front door, structural timber post removal, beam added at ground floor, minor sections of modern partitioning removed and new added, attic floor bathroom created.
S.21/1553/HHOLD Stocks Cottage, St Mary's Street
Erection of infill extension, roof repair, installation of windows and dormers on rear elevation.
S.21/1466/VAR Sheepscombe House, Jacks Green
Variation of Condition 2 (Approved plans) of S.19/1859/HHOLD to revise the approved double car port to a triple. Sheepscombe House, Jacks Green

S.21/1591/HHOLD Knapp Corner House, Knapp Lane
Erection of single storey side extension, alterations to garden and widen driveway
S.21/1629/HHOLD Holly House Slad
Erection of garage, replacement roof to conservatory and garage, and garage conversion (resubmission of S.20/2721/HHOLD).
S.21/1791/TCA Hazelbury Cottage, Edge Road
Cherry - Fell.
S.21/1675/HHOLD 2 Gloucester Street
Erection of single storey rear extension.

REFUSED

S.21/0588/HHOLD Court House, Hale Lane
Construction of double oak car port.
S.21/1471/HHOLD Court House, Hale Lane
Erection of fence on northern boundary.
S.21/1489/HHOLD Court House, Hale Lane
Erection of pool house to replace existing structure.

Disclaimer

The Beacon does its best to verify information published, but does not take any responsibility for the accuracy or reliability of information provided by other contributors. Paid advertising is accepted in good faith and we disclaim all liability for goods and services on offer.

The WAYPOINT
BAR & KITCHEN

Come and find us at Painswick golf club.
We're dog friendly and everyone is welcome!

Sunday Carvery
Daily Lunches, Coffee & Cake
Private events & parties
Wakes

CALL TO BOOK - 01452 812180

Simon Gyde
Carpenter and Joiner

City & Guilds
Purpose Made Joinery
Restoration Woodwork
General Building Services

07768.173726 simongyde@yahoo.co.uk

Country View
Window Cleaning

07817 154919
info@country-view.co.uk

Fully Insured Gutter Cleaning & Cleaning
Pure Water Systems Solar Panels
Conservatories UPVC Cladding
Residential & Commercial

www.country-view.co.uk

IRONEASY

Professional Ironing,
Dry cleaning, Laundry,
Repairs/Alterations
& Shoe repairs

FREE COLLECTION & DELIVERY

Tel: 01452 740129
www.ironeasy.biz

Personal Column

Condolences

To the family and friends of GERALD RUSSELL of Vicarage Street, who has died recently.

To the family and friends of REIGH SUTTON who has died aged 99. We hope to feature a tribute to Reigh next month.



Reigh Sutton with medals from her military nursing service



Sam McWhirter, Alex Daniels and Hamish Ryan, whose combined GCSE grades added up to over 250!

Congratulations

To JOHN BOYDELL, former Painswick resident and Marling schoolboy who was selected for the England Masters (over 45s) hockey team to play in the Home Nations Tournament in Nottingham in late August.

To RICHARD AND ANNABEL GODDARD on the birth of their daughter Edith on August 4th. This is a first grandchild for Robert and Karen Goddard.

To all the local young people who have recently received GCSE and A level grades, including SAM McWHIRTER, ALEX DANIELS and HAMISH RYAN pictured below.

Thanksgiving Services

A service of thanksgiving has been arranged to celebrate the life of JIM HOYLAND who passed away on the 30th April 2020. This will take place at St Mary's Church on Friday 29th October at 12.00 noon. Everyone is welcome and the family invite you to join them at Broadham for refreshments after the service.

A Celebration of the life of FRANKIE MARSH is scheduled for noon on September 14th at St Mary's and afterwards at the Tennis/ Rugby Club at Broadham. All who would like to remember her are welcome. There is an appreciation of her life on page 8.

NEXT ISSUE

Publication date

SATURDAY

October 2nd 2021

**Deadline for all copy
Sunday, 19th September**

www.painswickbeacon.org.uk
for current issue and archive, the annual directory and village maps.

for editorial attention only use
beacon@painswick.net

or hard copy - preferably typed
Beacon post box - New Street

All copy must include author, address and contact telephone number.
Photographs and advertising art work original at 600dpi in JPEG

The Beacon Team

Co-ordinating Editor this month

Alastair Jollans 814263
beacon@painswick.net

Editing Associates

John Barrus 812942
beacon@painswick.net
Peter Jackson 07985 002325
beacon@painswick.net

Next Month's Editor

John Barrus 812942
beacon@painswick.net

Diary and Personal Column

Vicky Aspinall 812379
diary.beacon@painswick.net
personalcolumn.beacon@painswick.net

Feature writer and Directory

Carol Maxwell 813387
features.beacon@painswick.net
directory.beacon@painswick.net

Sport

John Barrus 812942
barrusjp@yahoo.co.uk

Distribution

Celia Lougher 812624
distribution.beacon@painswick.net

Treasurer

Richard Aspinall 812379
treasurer.beacon@painswick.net

Advertising

Peter Rowe 813228
advertising.beacon@painswick.net

Subscriptions

Jacek Wolowiec 813295
subscriptions.beacon@painswick.net

You could help Vicky Aspinall, if you would send information about those you know for whom a mention in the Personal Column would be appreciated.

Additional copies of the Beacon

are available from the Best One or online, where the Beacon can be seen in full colour at
www.painswickbeacon.org.uk



Making a splash: Pete Llewellyn captured this male blackbird in his garden on the bird's almost daily visit for a bath.



Pulp fact: Another striking image from Pete Llewellyn shows a wasp secreting wood pulp for a nest being built on their woodshed. The wasps chew wood and mix it with their saliva.



Liz Burge took this rather ominous looking picture of a toad climbing out of a hole in the gravel of her drive.

Printed in Gloucester
for
The Painswick Beacon
by
www.inkylittlefingers.co.uk
01452 751900

