

The Painswick Beacon

Volume 46 Number 7

October 2023

Sarah Haslam Inducted...

The Service of Institution and Induction of the Revd Sarah Haslam as Rector of the Beacon Benefice by The Rt Revd Rachel Treweek, Bishop of Gloucester, took place in St Mary's Church on Sunday 17th September.



...and leading the Clypping

On Sunday 24th September our newly inducted Rector led the annual Clypping service embracing St Mary's Church. She gave a very down to earth address and many said it was one of the best for many years.



Tour of Britain

The Tour of Britain cycle race passed briefly by Pitchcombe and Edge... below the main peloton passing by having just left the A46 cheered on by around 50 on-lookers who had come out to support the riders.



PARISH COUNCIL NEWS from the minutes of the meetings held on 20th September

Reports upon meetings of the Parish Council cannot help but be selective, if only because of space constraints. We try to highlight points of widest public interest, based upon what we see and hear.

The full minutes of Council and committee meetings are available for scrutiny at the Council's office and on-line at the Parish Council's web site.

PLANNING COMMITTEE

Chairman, Cllr Rob Lewis, opened the Meeting and welcomed several members of the public who were present.

Present: Cllr Rob Lewis (Chairman), Cllr Andy Cash, Cllr Sandra Hunkin, Cllr Ian Massey, Cllr Martin Slinger.

Apologies: Cllrs James Cross, Ann Daniels, Adrian Gyde, Rosie Nash and Roey Parker.

Matters requiring a decision.

S.23/1403/HHOLD S p r i n g f i e l d ,
Catswood Lane
Erection of an outbuilding (retrospective).

This application has now been determined by Stroud District Council.

S.23/1364/HHOLD 9 The Croft,
Painswick

Proposed first floor rear extension and loft conversion.

The Committee agreed to support this application but would like a condition to be included to ensure that the en-suite bathroom window is opaque.

S.23/1501/LBC/S.23/1500/FUL

Painswick House, Gloucester Road
Conversion of former Coach House to 2 no. residential dwellings. Resubmission of S.23/0566/LBC.

The Committee agreed to object to this application as it will have a negative effect on the important flora and fauna and be detrimental to Rococo Garden.

The Committee agreed to support the following application.

S.23/1511/HHOLD Beech View, The Park

Erection of a rear extension and alterations to landscaping.

S.23/1341/FUL Skinners Mill
Cottage, Stepping Stone Lane

Change of use of an agricultural building to residential dwelling (C3 dwelling)

S.23/1607/HHOLD Washbrook Mill,
Edge Road

Replacement garage. Resubmission of

S.22/2235/HHOLD

S.23/1610/FUL Worgans Barn,
Folly Lane

Erection of agricultural pole barn.

The meeting closed at 7.45pm

PARISH COUNCIL

Present: Cllrs Martin Slinger (Chairman), Andy Cash, Adrian Gyde, Rob Lewis, Roey Parker, Rosie Nash, Abigail Smith, County Cllr: Sue Williams, District Cllr: Gary Luff

4 Members of the Public

Apologies: Cllrs James Cross, Ann Daniels, Sandra Hunkin, Ian Massey.

Reports from County Councillor Sue Williams and District Councillor Gary Luff had been circulated and are available on the PPC website.

Chairman's report:

Thanks to all of those attending tonight from Edge and parish, it is good to see you all, and for you to see how things are done, and for you to ask questions in the 15 minutes before a meeting starts or ask a questions by e-mail. To some it may be boring, also you can come and sit at the back and just listen, but we do our best to keep the civil Parish moving forward.

From our correspondent Phil Taylor on our Friendship agreement with the town of Slavutych in the Ukraine. To commemorate Ukraine independence day a group of locals and visitors plus two from Bath, walked to enjoy round the lanes and footpaths, to gain the satisfaction from knowing that they would be sending a message of support to the people of Slavutych in the Ukraine.

At the next election we are told the MP's constituency boundary will be moved and that we be no longer part of the Stroud constituency, this will make no difference to us as at parish level as we will we will be still working with Stroud District Council.

With the building of over 1000 houses this side of Gloucester, it will generate an increase of traffic on the A4173, the Council will try to do our best at con-

trolling this, as at the moment vehicles are coming through far too fast and many are driving in a dangerous manner.

The Council unanimously agreed to adopt the unreasonable persistent or vexatious complaints policy.

The Council unanimously agreed to adopt the revised ANPR policy.

The Council approved the accounts as presented for payment.

Reports from other bodies:

Library. Cllr Roey Parker updated the Council on Library matters.

Painswick Community Support Group. Cllr Abigail Smith updated the Council on Support Group matters including Community Lunches and the Fair Share Food scheme.

Ward Reports

Sheepscombe Green. Cllr Roey Parker updated the Council on the cutting schedule.

S.23/1715/DISCON - Steanbridge House Slad Stroud. The Council agreed to make a strong objection to the application to discharge conditions.

The meeting closed at 8.50pm

Road Closure 27/11/23 - 8/12/23 Golf Course Road

Advance notice has been given that Golf Course Road will be closed from 27/11/2023 to 08/12/2023 to allow for installation of the Gigaclear infrastructure by Gigaclear.

The closure covers the length from the A46 to the Golf Club. Emergency and pedestrian access will be maintained.

MANN Jewellers
Established 1741
8 GEORGE ST, STROUD

GOLD COINS WANTED
Sovereigns, Krugerrands & Bullion
bought for cash or instant bank transfer
We also buy **jewellery & classic watches**

Visit our Stroud shop
01453 764097
Mention this ad for a free appraisal

We are still an independent family-run business

P.L.ALLARD
BUILDING & ROOFING LTD.
Specialists in Period & Modern Property

Cotwold Stone Tiling	Interior Renovation
Natural Slate	Bathrooms & Kitchens
Woodstoves	Chimney Repairs
Guttering & Leadworks	General Building

T. 01452 814278 M. 07841 695705
www.allardbuilders.com p.allardbuilders@gmail.com

BRIGHT & BEAUTIFUL
A BEAUTIFULLY CLEAN HOME AND A BRIGHTER YOU

HOLISTIC HOUSEKEEPING	PURE ECO FRIENDLY PRODUCTS	
STRICT SECURITY PROCEDURES	TRUSTED TEAMS OF UNIFORMED STAFF	
REGULAR CLEANS	HOLIDAY LETTING CLEANING	DEEP CLEANS

01452 401171
gloucester@brightandbeautifulhome.com

Weaning Ourselves off Fossil Fuels

On Thursday 7th Sep 2023 the Club welcomed Geoff King to speak about “Weaning Ourselves off Fossil Fuels”. Geoff worked for 10 years on the development and deployment of renewable energy sources and energy conservation initiatives. For this talk he drew heavily on his own experiences to explain in layman’s terms just what are viable options for eventually becoming “net zero carbon emitters”.

Primary references were 2 white papers issued in 2019 and 2021 – “Achieving Net Zero by 2050,” and “Building Back Greener” respectively. It quickly became apparent that the subject was extremely complicated and the strategies lacked the credible details to convince Geoff that, despite legislation, the strategies would succeed.

Setting the scene, UK with its population of 0.7% the world’s population, emitted 5% of the world’s total emissions placing UK approximately in the middle of the range of national carbon emitters. While UK has halved its emissions by eliminating almost all coal as an energy source, this had been a consequence of the collapse of its heavy industry (e.g. ship-building and steel production), effectively exporting UK’s requirements for these products to other parts of the world still using coal. We had enjoyed the fruits of the industrial revolution – but now developing countries are saying, not unreasonably, “we want those benefits too”.

While total UK energy use has not changed much over the past

60 years, its sources have changed, dramatically in some cases. Oil consumption remains stubbornly high, particularly while providing 35% of present electrical energy requirements which are expected to increase rapidly to meet the transport and domestic heating demands of a growing population. All this and more underpins the urgent need to wean ourselves of fossil fuels.

Looking ahead, Geoff outlined potential options for renewable energy, while ruling out hydrogen which is not a naturally occurring energy source and would require vast amounts of “green” electricity for its production. He also explained the practical implications of carbon capture and storage which are currently the only known ways to clean up emissions from aircraft. In terms of land use, solar PV farms are some 10 times more efficient than wind turbines at capturing the available energy.

The bottom lines :

Energy will be more expensive in real terms, as we move away from cheap fossil fuels.

Government initiatives so far are necessary but insufficient and lacking in detail.

We all have to own the challenge and start implementing the solutions as best we can.

Henry Hall



DIRECTORY 2024 – it’s your call

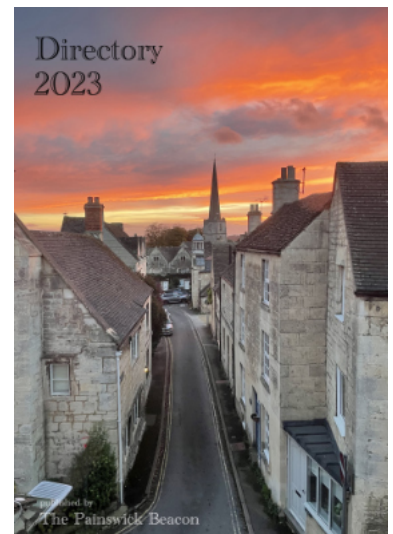
The Painswick Directory is delivered every year with the January issue of the Beacon. It is free of charge. Providing a very valuable source of information for both residents and our visitors, it is also, of course, of great benefit to those businesses, services, clubs, societies, agencies etc which are included in its pages. A copy is posted on our website too which continues to receive ‘hits’, not least from people moving into the area.

If you run a business, service, society etc it is in your interest to ensure that the relevant and correct details are entered in the next edition. We depend entirely on the information given to us by club secretaries, business proprietors and so on, and need these details as soon as possible if you wish to be included in the 2024 edition. Inclusion costs you nothing.

If you are already in, please check the details and let us know if there are any changes to be made. Out-of-date and incorrect information is most irritating for all concerned. If you wish your entry to be removed, or if you are aware of an entry that is no longer valid, you should let us know as soon as possible. There are also one or two services for which there is a noticeable shortage eg house cleaning. If you are engaged in a business or activity or know of one where this shortage applies please let us know.

This is a free community resource and it is important that it is up-to-date, comprehensive and accurate. Please send your details, or relevant information about any entry to directory.beacon@painswick.net or to beacon@painswick.net or to Carol Maxwell at carolmaxwell@talktalk.net or post in the Beacon box in New Street as soon as possible.

Carol Maxwell



Simon Gyde

Carpenter and Joiner

City & Guilds

Purpose Made Joinery

Restoration Woodwork

General Building Services

07768.173726 simongyde@yahoo.co.uk

PAUL COOKE

COMPLETE GARDEN MAINTENANCE

**MOWING HEDGE CUTTING
PATIOS PONDS**



Free estimates

Phone 01452 813738

Mobile 07702 912392

Established over 20 years

ACCOUNTS | TAX | BOOKKEEPING

**price
davis**

CHARTERED CERTIFIED ACCOUNTANTS

XERO

GOLD PARTNER

ACCA Think Ahead

Accountants trusted by
established companies,
start-up businesses,
& **individuals** across
Gloucestershire for over
25 Years!

01452 812491

craig@pricedavis.co.uk

www.pricedavis.co.uk

Week of Prayer for World Peace



15th to 22nd October

Prayers will be said between 11am and 1130am each day of the working week in the Church of Our Lady & St Therese, Friday Street. Everyone is welcome.

Friendship Walk for Ukraine

A group of local and visiting supporters of Ukraine met in Painswick on 24th August to enjoy the Ukraine Friendship Walk. The route of the walk passed the three local road signs that make it clear that Painswick people are "Friends of Slavutych". The village has a formal Friendship and Co-operation Agreement with Slavutych and hosts several people from that town.



The weather was kind and the walkers enjoyed taking part in a pleasant, meaningful walk which sent a message of support to a town and country suffering the death and destruction of an unprovoked invasion.

Phil Taylor

Library Book Club



The next meeting of the Library book club is on Monday 9th October from 1.30 -2.30pm, in the library. We will be discussing *The Romantic* by William Boyd.

We will meet again on Monday 13th November to discuss *everything i never told you* by Celeste Ng. New members are very welcome so please do come along and join us for one or both of our Autumn meetings.

For further information email painswick.library.bookclub@gmail.com

Pat Andrews

Painswick Educational Trust

The Trust will soon be meeting again to deal with applications from young people resident in the Painswick area for financial help with their studies and apprenticeships. Previous successful applications have been made for money towards books, computers, catering equipment, course fees and educational trips. If you are interested in finding out more, please email our Clerk, Antonia Wright, for an application form at painswick-educationalfoundation@gmail.com. You can also contact me, Joy Edwards at: joyattheplough@gmail.com.

Joy Edwards - Chair

And Finally... Speed Cameras Going up in Early October



After months of waiting, we will finally be putting up and activating our ANPR (Automated Number Plate Recognition) cameras in Painswick. The wait had been for accompanying signs, but it has now been confirmed by Gloucestershire County Council that the cameras don't need to be accompanied by signs and, critically, that the approved signs, as previously promised, won't be available for many more months.

Thankfully, we already have signs warning motorists of speed cameras in Painswick associated with the 30mph gateway signs. These were put up many years ago when Broadham was designated an official speed check area for the police. Being well understood by motorists, it is felt that these are sufficient to allow us to deploy our 3 cameras, planned for early October.

As a reminder, the cameras will only record the registration of those vehicles exceeding the speed limit. The data will be collated weekly and provided to the police for processing. This will result in warning letters being issued to 10-15 offenders for each camera. At no point in this process will the Parish Council be party to the ownership details of the vehicles recorded exceeding the speed limit. No fines will be issued, but the data will be used by the police to determine whether they want to take additional enforcement action, eg police-lead speed checks.

This is a new initiative by Gloucestershire Police and Gloucestershire County Council, which has been developing over the last year. We are grateful that we were able to engage early, and to finally deploy the ANPRs we have jointly invested in.

Abigail Smith, Chair of Traffic, Painswick Parish Council

Resthaven offers 24 hour residential and nursing care set amidst some of the finest countryside in Gloucestershire with panoramic views over the Painswick valley.

For more information please call **01452 812682** or, visit: www.lillianfaithfull.co.uk/resthaven

Resthaven is part of the charity Lillian Faithfull Care
Registered Charity No: 1122183



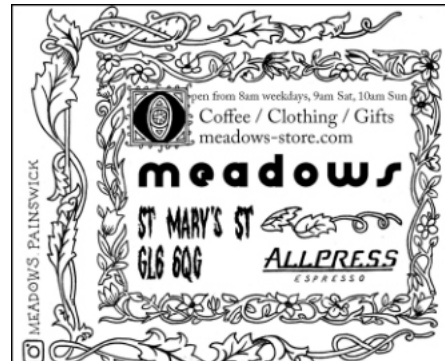
Open from 8am weekdays, 9am Sat, 10am Sun
Coffee / Clothing / Gifts
meadows-store.com

meadows

ST MARY'S ST
GL6 6QG

ALLPRESS
ESPRESSO

MEADOWS PAINSWICK



Jottings - Wool

We have some 60 breeds of sheep which can thrive on lowland, uplands and hillsides. They are mostly farmed for meat but also producing about 70,000 tons of wool a year. A most fantastic product which plastic has tried to take over in many ways.

Different breeds produce different grades of wool. The merino gives the finest cloth for high end suits whilst other breeds produce tough wools for carpets and many other products like horse rugs. Most wool home insulation material is made from wool taken from lower-grade sheep. It holds in warmth, regulates moisture, and resists mould. Wool can absorb almost one-third of its own weight in water but remain insulating. Wool is popular in bedding because of how it can manage your body temperature, keeping you consistently comfortable. It can absorb moisture from your body and let your skin breathe.

Wool is fire resistant: It doesn't burn until it is very, very hot and even then does not melt or drip. It forms a "char" which will burn out. Firefighters wear woollen clothing to protect them.

Sheep wool is effective in slow-release fertilisers because it can regulate moisture and store water. It is fully biodegradable, decomposing in three to four months and so useful in weed killers, pest control, mulches and a friendly alternative to peat. Slugs and snails in the garden find the fibres of the wool unpleasant to crawl over so turn back (There are products on the market just for this).

More recently there has been a lot of planting of seagrass out at sea because it is so important for locking in carbon dioxide. Wool rope has been found to be far better at securing it on the sea bed, instead of plastic rope.

The lanolin taken from sheep wool has been used for beauty purposes for hundreds of years. It's a wonderful moisturiser. It can be used as in adhesive tape, oils and shampoos. It is used to soak up oil spills at sea and is even sometimes mixed with seaweed to create a material for reinforcing bricks.

Sheep need to be sheared every year, so the more things we can find to use this product for, the better, with many establishments doing just this.

Martin Slinger



Cotswold Animal Services
Home environment doggy day care and boarding based in Painswick.
Group socialisation dog walks or 1-1's.
Equine care and cat sitting in your home.

+44 (0) 7814 955975
www.cotswoldanimalservices.co.uk

Fabulous View
Window Cleaning and Dry Stone Walling in the Cotswolds

Window Cleaning up to 40ft
Sky lights and Glass Roofs
Orangery Cleaning
Leaded glass
Gutter Clearances
& Dry Stone Walling



A great reputation in Painswick and surrounding villages since 2004. Fully insured.

Call Philip Lines today for a quote **07722 003302**
Visit us at www.fabulousview.co.uk



IAN RICE BUILDING Limited

Extentions, Conversions, General Building
Free, no obligation estimate

01453 821555
07980 945126
ianricebuildingltd@gmail.com
www.ianricebuilding.com
3 Perth, Stonehouse, GL10 2PT

A Case of Targeted Vandalism

Painswick is not normally associated with acts of vandalism and intentional damage. It is therefore somewhat concerning to have to report just such behaviour in the very centre of the village. On four separate occasions in August the A-board advertising the Painswick Pooch cafe was smashed and left lying in a heap on the pavement at the junction of Bisley Street and New Street.



This was without doubt a series of deliberate acts especially considering the fact that it was placed alongside two other A-boards which, on each of the four occasions, were untouched. Furthermore, the main sign for the Painswick Pooch near the church was also subsequently badly damaged. It certainly raises serious questions as to why someone should target just one business.

All of our shops and cafes – and there are not very many – need as much support and promotion as possible and this destructive, deliberate behaviour towards just one is certainly a cause of great concern.

Carol Maxwell

Alice Howard – the Story Grows

Following last month's article on the subject of Alice Howard and the Catholic Church, Brett Hutton has provided more information gleaned from his house deeds to add to the story.

Firstly, she purchased The Gables (Friday Street) including the two adjoining cottages one of which was Thorne. This was in addition to and at about the same time as Hale Cottage, as mentioned in the Beacon article. Apparently she then rented out The Gables whilst living in Hale Cottage.

On her death in 1942 Alice bequeathed The Gables and the two cottages to the Catholic Church, subject to a life tenancy to her sister, Janet Madeline Cecilia Howard. Janet died in 1960 and The Gables and the two cottages (now merged into one cottage, Thorne) were sold by auction in 1961.

News from St Mary's

It is a delight on behalf of all our parish communities, and our magazine readers, to welcome Rev Sarah Haslam as the new Rector of our Benefice. Sarah has been working with us since earlier in the year, and has already engaged with the life of our churches and villages. At the service on 17th September she took on the official role of Rector, and with her family has moved into the Rectory in Painswick.

The role of clergy has changed markedly in the past generation or so. In the 'old days' (within many of our lifetimes) each village had its own vicar, often living in rambling, cold vicarages next door to the church. The vicar had responsibility for nearly all the activities of the church: leading the services and preaching every Sunday, looking after the pastoral needs of their 'flock' and even cutting the vicarage lawn ready for the church fete! The rest of us, the members of the communities, were somehow passengers in the life of the church, usually just attending and at best helping in some small way.

These days – and I believe this to be a very positive change – churches function differently. The change did not come about because of fewer clergy, or as a vague evolution, but around the 1990's theologians and church leaders gained new understanding of what a church, in a biblical sense, was meant to be.

In this new model everyone is encouraged to be involved : each person contributing from their skills and experience as they are able, with everyone's contribution valued and all sharing responsibility for the running, the vision and the future of the church.



The role of the clergy has therefore changed markedly. No longer is the vicar running a 'one man band' (and it was a man of course!), but their role is one of leader, enabler and encourager. The selection process for those interested in being ordained, and their subsequent training, has changed accordingly, with much emphasis on leadership qualities and skills.

So, as Sarah arrives officially among us, it is not the time for us to step back from what we are doing – not at all. But rather for us all to look forward to working with her, whether we would regard ourselves as regular 'church goers' or not : together discussing ideas, sharing vision, and, being courageous to offer whatever skills and time we have to take the life of our churches forward.

I know that Sarah will be looking forward to meeting everyone, and attending events in our different villages whenever she can. Do look out for her and introduce yourself.

Rev Helen Sammon

Concerts in St Mary's Church

Friday 13th October-7.30 pm.

**'Raise the Roof' in aid of the re-roofing project
Gloucestershire Police Male Voice Choir**

Conductor: Lucas Bailey

With guest soprano: Beatrice Myers Dickinson

Programme includes music by Schubert, Elgar, Lloyd Webber, Leonard Cohen, Sondheim, Elvis and Mamas and Papas

Tickets £10.00 to include a glass of wine from the Benefice Office – beaconbeneficeoffice@gmail.com or Telephone: 01452810935 or at the door

Sunday 22nd October – 3pm Music for Raising the Roof

A Song Recital by baritone Chris Hall and local pianist Robert Burgess

Retiring collection for the Church roof fund

**Sunday 19th November – 6pm to 7pm
Gloucestershire Youth String Orchestra**

Conductor: Nicholas Steel

Programme includes Telemann Viola concerto in G Major, Monti Czardas, Tchaikovsky Serenade First Movement and Mendelssohn String Symphony 10

Retiring collection

**Saturday 9th December – 2.30pm Wycliffe Choral Society
Messiah – Handel**

Conductor: Christopher Swain

Organ: James MacDowall-Scott

Tickets £10 – details to follow

**PAINSWICK
CURTAINS & BLINDS**

Vicki Moore

Beautiful, quality
curtains, blinds and soft furnishings
Custom made by hand

**01452 810707
07810 646714**

vickimoore@gmail.com

B. Pearse Carpentry

" A complete woodworking service "

All internal / external work
Bespoke Joinery supplied and fitted
Staircases, kitchens, wooden flooring
Timber framed buildings / extensions
Traditional cut Roofing
Renovations / Alterations

Ben.pearse@hotmail.com
07791 639 635

**painswick
osteopaths**

Paul Stamp D.O. Helen Froggatt D.O.

Tel: 01452 301748

• Structural • Cranial Osteopathy
• Sports Injury • Neck, Shoulder, Hip, Knee
Parking Available

**LARWOOD
GARDEN SERVICES**

MOWING AND LAWN CARE
WEEDING, PRUNING AND PLANTING
HEDGE CUTTING AND CLEARANCE
FENCE AND SHED REPAIRS

TRUSTED LOCAL COMPANY, ESTABLISHED 1998.
FOR A FREE ESTIMATE CONTACT NEIL ON:

07816 496087

ENQUIRIES@LARWOOD.NET

Top Local Skills in the Art Trail

Painswick without doubt has a very creditable place in the history of the arts world, continuing to the present. Indeed today there is a veritable plethora of artists working locally, displaying an amazing range of skills and talent in their chosen practice. For some time now there has been an annual Art Trail in the Stroud area and this year six of our local artists will be working on and displaying their various pieces in Painswick as part of the Arts Trail.

Two of the six will be in their usual place of work, the Art Studios in the Painswick Centre. Ange Mullen-Bryan, who has been based in the Art Studios for some time, produces contemporary landscape paintings. She studied art at Stroud Art School and Winchester School of Art. Taking as her muse the landscapes of her much loved Sweden, these scenes of forests, lakes, sunsets and snowscapes in oils are often painted on coloured linens which she sources from the Painswick Fabrics shop. Nicholas Ozanne, textile designer and weaver, works at his traditional wooden hand loom to create beautiful and oh-so-tactile scarves using exquisite pre-dyed fine silk or lambswool. Trained at Winchester School of Art and a member of the Gloucestershire Guild of Craftsmen, he is a master craftsman, demonstrating outstanding working technique.



Nicholas Ozanne, Sarah Middleton, Jane Garbett, Ange Mullen-Bryan



Aly Lloyd, Howard Mason

Three of the artists will be in the church rooms. Aly Lloyd, who usually works from her home studio in Painswick and is self-taught, is a figurative artist whose work focuses on modernist and expressive representations of women, often deconstructed into simplistic silhouettes and patterns. Howard Mason has recently moved to the area. 'I paint figurative art in oils,' he explains. 'I like to paint people and am fascinated by their expressions, feelings and moods. I often get inspiration from music and current affairs.'

Sarah Middleton will also be in the church rooms. Growing up in a family of creatives she studied Italian and History of Art at UCL with a year course at The Slade. Her recent move to Painswick has inspired a series of watercolours which she calls quiet paintings. 'They're simply translating my love of the landscape and the meditative quality of painting,' she says. Jane Garbett, who gained a BA degree in Fine Art at UWE, will be in her own art studio in Vicarage Street where she has been based for the past twenty years. A contemporary abstract painter, Jane uses carefully considered colour and application of paint to create depth and emotion in her work.

This is a wonderful opportunity to see six of our local artists working and demonstrating their various techniques and outstanding skills and to see some of their completed work on display. The venues will be open from about 10.00am-6.00pm, Saturday and Sunday 14/15 October and 21/22 October, and there will be a small taster of what's on show at the back of the church every day from the 14th to the 22nd October. Do go along and observe some truly outstanding local talent.

Carol Maxwell

... and, although not part of the Art Trail, Rupert Aker's The Louvre in St Mary's Street will also be open at the same time. In this delightful little space Rupert can be seen working surrounded by several of his very impressive paintings.

Re-launch of the Art Studios



A few weeks ago the Art Studios in the Painswick Centre had some rather noticeable vacant spaces due to the previous artists moving on. However, the situation has been re-vitalised by the introduction of five new artists and now all six units are occupied. Furthermore, the six are all practitioners of different art forms viz a print maker, a watercolourist, a weaver, a jeweller, a portrait artist and an oil painter.

To celebrate this revival, to welcome the new artists and to re-launch the studios, they will be opening specially on the evening of Friday, 20th October, 6.00-8.00pm. Do go along to join in the celebration and see all six artists at work.

Carol Maxwell

Kate Rich
walks Painswick's
'Diamond Dogs'
Stimulating Dog Walks
that include the best 'sniffy places' to
delight your dog

Also: Bespoke Dog Sitting Service
Tel: 07785 562616
www.katerich.co.uk

Computer or Tablet Problem?

Computer repairs & upgrades
6 month health check ups
Plain speaking tuition
Internet security
Remote support
Wi-Fi solutions
Easy backup
Hints & tips
Advice
Help

5 star rating

Matt Hughes
07740 167318
www.pcprop.com
£45ph Est.2003

**Gardens
&
Interiors**

www.cotswoldcontemporaryliving.com
Designed in Painswick **07832 351864**

Painswick Community Support

Community Lunches – they're back!

Painswick Community Support and Painswick Parish Council are pleased to announce that they have come together to keep the much-loved Community Lunches going through the coming winter months. This 'by the community, for-the-community' event has been run successfully for many years, but due to changing circumstances needed a refresh.

Held on the traditional Monday lunchtime in the Town Hall, this is open to all parts of the community, to come together around a bowl of soup provided by Painswick's plethora of clubs, societies and organisations.

We have decided to move this to a Pay-As-You-Feel event in light of increasing costs for everyone. The donations will be used to recoup the cost of putting this on, whilst any additional costs will be underwritten by a Parish Council grant. Any profit after costs are covered will be donated to local charities.

We aim to run these weekly from Monday 30th October to March. We are currently busy engaging Painswick's plethora of clubs, societies and organisations as hosts, with many already signed up. If you are involved in such a group and would like to host a lunch one week, we would love to hear from you!

We have 6 dates confirmed before Christmas - 30th October, 6th, 13th, 20th and 27th November and 4th December. Please look out for the posters and social media posts for further details!

Wednesday Pop-in

Starting up again in the Town Hall on 1st November and throughout the winter, the Wednesday Pop-in invites you to join them from 10am to 12 noon. Various activities, including arts, crafts, knitting, jigsaws and board games will be on offer plus tea, coffee and biscuits and of course chat! There is no charge (guests may, if they wish, donate to the Community Support donation tin). We aim to provide mentors to lead different activities and encourage new skills opportunities; perhaps you could share a skill with others or would like to learn a new one? All are welcome. If you would like to join our helpers' rota, even on an occasional basis, please let me know. Sandra Glass (email: sandra.glass@btinternet.com).

Community Suppers - new collaboration... watch this space

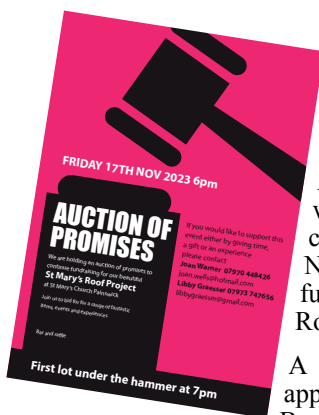
In collaboration with the Painswick Centre, Painswick Community Support are excited to be planning our upcoming season of suppers for up to 80 diners. With Community Support providing the supper on a Pay-As-You-Feel basis, the Painswick Centre will be our hosts and provide a bar for diners to purchase their beverages of their choice.

This is pitched at the whole community, aiming to bring people together across generations, and from newcomers to those who have been here a lifetime. The dining area will consist of long tables to encourage people to mingle and get to know those they may not have previously met. Diners will be asked to sign up for the event and pre-order their meals.

We are still working out the details, but are aiming to start these in November. We hope to put on at least three, but are seeking grants to support up to six. Look out for details in November's Painswick Beacon, along with posters and social media posts so we reach the widest possible audience.

If you need help or support or have any questions, please call or email us (mobile: 07956 203087, email: painswickcommunity@gmail.com). Our phone is manned 7 days a week from 9am to 5pm.

*Painswick Community Support Committee
Louise, Abigail, Delyth & Hannah*



Auction of Promises

An auction of promises will be held at St Mary's church on Friday 17th November to continue the fundraising for the St Mary's Roof Appeal.

A list of the promises will appear in the November Beacon.

If you would like to support this event either by giving time, a gift or an experience please contact:

*Joan Warner 07970 448426
joan.wells@hotmail.com
Libby Graesser 07973 747656
libbygraesser@gmail.com*

Luxury Christmas Wreaths with Emma



We are excited to announce that booking is now online for our annual Christmas wreath making workshop at the Painswick Centre. We have hosted this event for ten years now and it's a perfect opportunity to kick-start the festive season and make something beautiful for your front door.

Saturday, 2nd December 11.00am-1.00pm, Painswick Centre, luxury Christmas wreath making, all materials provided, glass of fizz on arrival, £50pp, early booking advisable.

Furthermore, we will be selling/taking orders for our fresh, ready-made Christmas wreaths on our website shop from October onwards and also at Goodwill Evening. Follow the shop link on www.thebespokeflowercompany.co.uk or call Emma on 07798 672227 or email info@thebespokeflowercompany.co.uk

The Bespoke Flower Company

The Painswick Centre AGM took place on 25th September 2023 and was well attended by over 40 people. The Chair, John Williamson, gave an update on the events over the past twelve months although explained that he had only been the chairman for the past four months. The AGM heard that following the last AGM six Trustees were on the board. Unfortunately, no trustees were nominated by user groups and due to resignations, the board had reduced to three Trustees.

Chairman's Report

The Chair stated that following advice the three remaining Trustees concluded the Centre was not financially viable and made the decision to close the Centre in June.

The Chair explained that following a call to arms and a well-attended public meeting in June, 12 volunteers had stepped forward to become Trustees until the AGM. The Chair then explained the focus of work that the Trustees have been undertaking since that time. This has included employing a part time Centre Manager and undertaking a range of previously identified maintenance work such as the replacement of the flat roof at the rear of this hall, the gutters at the front of the Centre, jet-washing of drains, remedial damp work undertaken on the cottage and garden clearing. This has all been done by either local tradespeople or volunteers. In addition, the Beacon Hall had been redecorated in about a week by over fifty volunteers, some able to give just a few hours and others a few days. The Chair commented that it shows what can be done when a community comes together. The Chair noted that several people had contributed to buying the paint and thanked all who had been involved.

Since June, the Trustees have also negotiated new contracts with the artists in residence and the Chair explained that there are now six artists/craft persons in residence in the newly painted studios which are now open to visitors all week. In addition, the Thursday morning market is thriving, thanks to another volunteer who has stepped forward to become market manager. The market is going from strength to strength and all present were encouraged to come along on Thursday mornings, meet neighbours and buy local produce.

The AGM also heard that take-away food evenings have restarted with more vendors to be announced soon and the community suppers will be hosted here in the Beacon Hall and, finally, that Wick-flix would be returning later that week.

Treasurer's Report

The AGM also heard a Treasurer's report for the year ending 2022 and were reminded that 2022 continued to be affected by

Covid restrictions and people remained cautious about holding events. Turnover was reported to have jumped significantly from 2021 to 2022, much of which could be attributed to things returning to normal following the Covid pandemic. However, there were some areas of costs that had increased significantly in 2022, including salaries, heating and lighting and the Treasurer's report concluded that the accounts for 2022 were showing a total loss of £13,000.

The Treasurer's report noted that the current group of Trustees has sought to increase revenue and reduce costs and that the finances are now in a stable position, albeit that they will show a period of lost income from the Spring through to the summer reflecting the effects of the announcement to close the Centre. The Treasurer's report concluded that whilst there are significant challenges going forward, by reverting to the volunteer model previously used the Trustees can steady the ship and return the Centre to operating within its means.

The Treasurer's statement included information about a pricing review for room rentals and other services that has been carried out, including spending time discussing this with regular users as well as comparing prices to other local venues. As a result a new price matrix has been introduced. The Treasurer noted thanks to both volunteers who had contributed time over the previous three months and also local firms, in particular to Ben Pearse, Allard's and Hewers who have helped resolve some of the building and heating issues.

Finally, the report noted that the Centre is seeing former regular users returning with enquiries for use of the facilities. In addition, the Art studios are now full and yielding improved income and the Trustees are working closely with the Parish Council, Community Support and other local businesses such as The Oak to develop joint initiatives.



The newly decorated Beacon Hall

Public Questions

There were then several questions from those attending the meeting along with a number of written questions received in advance.

The final part of the meeting saw 5 representatives from user groups being nominated to sit as Trustees for the coming year and 3 nominations for additional Trustees were nominated and seconded at the meeting. All 8 people were therefore appointed as Trustees.

Once the meeting had concluded, there was an opportunity for those present to discuss ideas and issues informally at the bar.

The future of the Painswick Centre is bright and the Trustees are keen to hear from any volunteers who might be interested in helping to run the bar or be involved in decoration of other parts of the Centre in the future. Anyone who is interested in this should contact the centre manager in the first instance.

manager@painswickcentre.com

Ceri Chapplin

Links with Gloucestershire

In September Michael Grey treated us to a fascinating mix of work by composers linked with Gloucestershire, much of the music new to many of us. The wedding march from Parry's Birds provided a lively and happy start. Both that and Ivor Gurney's Coronation March sounded much like Elgar. An extract from Holst's Cotswold Symphony was a stirring piece of work. Settings of poems by local authors were enjoyable, as was part of Severn Rhapsody by Finzi - (who lived in Kingsmill), and a setting by Wilfrid Orr (Painswick). An unusual item was an extract from The Lily Maid by the once popular Rutland Boughton - possibly the only opera ever premiered in Stroud. The most lyrical piece was Vaughan Williams rendering of a folksong - Turtle Dove - Michael likes it very much and wants it played at his funeral ! Vaughan Williams England, o my England concluded the programme - a stirring choral piece. Overall a very varied, informative, and enjoyable afternoon, that despite its local nature widened our perspectives.



Coming up:

October 5th Dennis Morgan will show a DVD concert of the Verdi requiem, in memory of Alex Nicholls.

October 19th Richard Westwood-Brookes will present Elgar's music, including less well-known masterpieces such as The Kingdom. Richard is the author of two biographies of Elgar.

November 2nd Julian Elloway will present composers he has published - Walton, Vaughan Williams & others including including Britten and Rutter.

Colin Moss



On the 8th September Members were mystified when our speaker, Paul Griffiths, a cattle breeder on Edge Common appeared carrying a large object covered by a sheet. We were lucky that Paul was still able to talk to us as the day before his fencing had been vandalised and his cattle were roaming free over the Common. With help he was able to "roundup" the cattle and then rush to the Town Hall to talk to us.

He explained that he had spent his entire life in the area, ploughed many of the local fields - initially using horse power and now tractors! It was a fascinating talk, particularly when he revealed what was under the cover - gasps of surprise from us - a huge Scythe! He cleared a space and demonstrated how to swing the Scythe - we all kept well clear! Paul read several poems relating to farming which we all enjoyed. At the conclusion of the talk he was surrounded by members who wanted to hear more of his stories. A thoroughly enjoyable afternoon.

Then on the 22nd local artist Mark Kelland demonstrated how to draw a Christmas Card, then used water colours to "paint" the outline. Mark had provided all the materials including "paint holders." Members quickly "got to grips" with the project and to their surprise began to produce excellent results. Enjoy opening your "handmade" Christmas Cards this December!

Turning to October on the 6th we are encouraging Members to read any poems they or a family member or friend may have written. Should be very interesting! Then on the 20th the Town Hall will be "a must visit place" as the Matson Handbell Ringers will be demonstrating their prowess.

As you can see we have a wide ranging and varied programme. So why not come along and enjoy an afternoon of fun and entertainment, rounded off with tea, biscuits and of course good conversation! See YOU SOON.

Mike Kerton

A Sparkly Date for Your Diaries

Planning is underway for one of the most anticipated nights in Painswick's calendar -

The Good Will evening! This year, on the 24th November, the village will once again be filled with cheer and laughter, the streets will be bustling with locals and visitors and the Christmas season will be launched in style! Expect to hear the church bells toll, to see twinkling fairy lights, to meet Father Christmas, to enjoy seasonal song, to browse at the Christmas market and to greet local business owners, who will be offering a warm welcome to all. If previous years are anything to go by, it will be a sensational evening!



The ethos of Painswick's Good Will evening is one of giving and kindness, it is about extending a hand of friendship to everyone. The event works hard to raise money for the nominated charities. This year fund raising efforts will be focused on supporting our much loved Painswick Centre. The evening is run entirely by volunteers and made possible through the efforts of the local community. The organisers are deeply grateful to everyone who willingly give their time, effort and expertise to make Painswick Good Will evening such a remarkable event. If you would like to volunteer to help at the event, we would be delighted to hear from you, please contact painswickgoodwillevening@gmail.com

Sandie Randle

FRASER HALL

MINI DIGGER WORK: ALL TYPES
GARDEN MAINTENANCE
DRIVEWAYS & FOOTINGS
AGRICULTURAL FENCING
TREE SURGERY
SEASONED FIREWOOD

M: 07766 132 903

FULLY INSURED
BASED IN HARESCOMBE

Turnstone Acupuncture & Chinese Herbal Medicine Practice

Simon Robey MBAcC, MRCHM

Acupuncture - Chinese Herbal Medicine
- Massage - Mindfulness Meditation

Greenhouse Lane Painswick GL6 6SE

07799 742498

turnstone2021@gmail.com
painswickacupuncture.com

Two autumn talks, two perspectives on rural history over the last three centuries.

The 2023 lecture series in the Painswick Centre is now underway and will run on the first Wednesday of every month at 2.30pm. The next lecture, on 1st November will be Field Club Member, Angela Lerwill talking about her recently published book 'Tales of a Sussex Family Farm'. Frithwood Farm was home to the Lerwill family from 1949-1997 and Angela, the youngest daughter, will offer insightful and amusing stories reflecting on her younger years growing up on the farm. Prepare for a journey down memory lane to a bygone age. Copies of her book will be available for £15 (cash only).

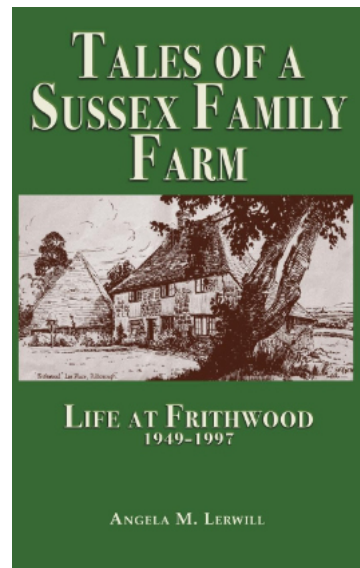
Maintaining the historical theme, the 6th December session will be given by Stuart Butler, a writer, teacher, poet and performer, well known in Stroud as a radical historian. He will be speaking about 'The Radical history of Stroud and the Five Valleys in the 18th and 19th centuries'.

Tea and biscuits will be served after the talks.

Visitors are very welcome at our meetings; no booking required - please drop in or contact Paul Wyeth on CNFCLectureSec.pw@gmail.com or mobile 07472 021 517 for more information (£5 charge for visitors, £2 for members).

Membership of CNFC is still only £20 per annum or £30 for two or more people at the same address. The Club offers monthly autumn/winter lectures in both Box and Painswick and regular day or longer excursions over the summer. For more information about membership please contact Clare Woodman on CNFCMembershipSec@outlook.com.

Sylvia May, Email: cnfsecretary1@gmail.com



Some Historic October Painswick Crimes

1843 The £800 of which Mr John Gardner of Painswick was some time ago robbed at Boulogne has been recovered. A £500 note, part of the amount, was lately stopped at the Bank of England where it was offered for change by a foreigner; and the remaining £300 has since been recovered from the hands of an old washerwoman at Boulogne, who surrendered it on receiving a reward of £30. *The Times 25 Oct. 1843*

1853 Joseph Gwinnele, baker, age 39, 5ft.11in., hair brown, eyes grey, visage long and sharp, complexion dark, guilty of assaulting his wife, Louisa Gwinnele. 6 months hard labour Horsley House of Correction.

1873 Albert Ireland, 13, guilty of stealing 20 walnuts, the property of Mr Joseph Dickenson of the Slad, value 1d. His mother stated that when he was coming from his work at the Vatch Mills he threw up at them, but he was not so sharp as he should have been. He was troubled with fits when young. She had six children and the prisoner earned 5s a week when in full work. Mr Dickenson said they were constantly being annoyed by boys knocking the walnuts off the trees. Fined 4/-, and if brought up again would be sent to gaol and whipped. *Stroud Journal 4 Oct. 1873*

1893 Caroline Jones of the Fleece Inn for using a deficient pint cup was ordered to pay a fine of 13/6. *Gloucester Citizen 14 Oct. 1893*

Stephen Walker was summoned for non-payment of Painswick Parish poor-rate.

Richard Sansome, labourer, age 42, non-payment of rates. 7 days or pay 10s.3d.

George Hanks, labourer, charged with threatening to knock off the head of Mary Foxwell. Thomas Long said that he heard defendant say he would split Mrs Foxwell's head open with an umbrella. Defendant said he wished the Bench would bind Mrs Hanks over "to kip her tongue shut." Case dismissed. *Stroud News 27 Oct. 1893*

1903 Frederick Musty charged with having stolen seven live fowls, value 12/3, the property of Francis Pinching of Holcombe Farm. [A lengthy explanation of the circumstances]. When in the cells at Stroud prisoner said, "As I was going home on Tuesday night I saw several fowls on the gate at the side of the road. I did not know they were Mr Pinching's. If he had paid me what he owed me I should have fetched them back again when I heard they were his. I could see he did not intend paying me. I sold the fowls to Mr Harris of Stockend for 7/6." Sentenced to one month's imprisonment. *Stroud News 23 Oct. 1903*

Frederick Trigg, labourer, summoned for having used obscene language in Vicarage Street. Fined 7/6 or seven days. *Gloucester Citizen 16 Oct. 1903*

Carol Maxwell


LIAM PHIPPS
General Builders & Stone Masons
'The complete building service'
Extensions, Renovations, New Build
Carpentry
Roofing
Kitchens
Liam: 07540 246133
liam.phipps@hotmail.com

CENTRELINE

STONEMASONRY
HISTORIC
BUILDING
REPAIRS
& ALTERATIONS
01452 813892 OR 07967 316038
WWW.CENTRELINESTONE.CO.UK
Fairfax House, Vicarage Street, Painswick, G16 6XS

ALL STONEMASONRY LTD
EXPERTS IN STONE
Drystone Walling; new and restoration
Stone repointing; including lime mortar
Mullion Windows Restored
Any stone repaired or replaced
Local masons with 40 years experience
01452 728949
alan@allstonemasons.com
For Your Quotation / Advice

Maurice Francis Maggs

Maurice graduated from Bristol as a Civil Engineer in 1945, entering Officer Cadet Training then being posted to the Middle East in Egypt. He later served in Cyprus. At the end of the WWII he moved back to Bristol and commenced his career as a Civil Engineer designing and building roads, motorways and bridges. After marrying his wife, Jill, an operatic coloratura soprano, he was posted to Malaysia, where he supervised the building of a military airport in Tenagah Airbase in Singapore. At the time of their departure, Carolyn, their daughter, was only 6 weeks old.

After nearly 4 years in the far east the family returned to England in the early 1960s, when son Paul was born, after which the Maggs' moved to Windsor. Maurice and Jill were very active in musical circles in both Windsor and Maidenhead, with Jill also singing professionally. When Jill died suddenly in 1999, Maurice rekindled a family acquaintance with a dear family friend, Pat Burrows, who he and his late wife had both known from their Windsor days. Maurice later moved to start a new life in Painswick in the early 2000s where he formerly lived at Tilia, Castle Close, Painswick with Pat as a neighbour and companion for the next 20 years.



All people who knew Maurice would have known that he immersed himself into the Painswick way of life, making lots of new friends. He became the conductor of the Painswick Singers and a bass singer in the Painswick Church Choir. He also became involved with the Painswick Music Appreciation Society, where he gave several talks to the Society and invited musical friends, including good friends, Gordon Collins and the late John Crayford acquaintances from his Windsor days to participate. Local Painswick residents may remember John a tenor singing for them whilst Gordon played the piano. Maurice was also an enthusiastic member of the Painswick Music Society, which hosted concerts each year in St Mary's Church. He was a committee member who contributed challenging ideas about the way forward. His rich knowledge of music enabled him to write many insightful Programme Notes for these concerts. He also hosted many of the Painswick Music Society guest artists in his home, providing them with a place to relax with teas and cakes at Tilia, before the evening concerts. Among many of the notable guests included Canadian classical pianist, Angela Hewitt, but there were many more.

Maurice had a good long life. He was a man with many friends, and he had lots of interests. He always faced life positively and with good humour, greeting everyone with a warm smile and a happy, welcoming face. Many residents will remember him on his mobility scooter, driving it at some speed to and from St Mary's church, to the Church Rooms and Town Hall. He was ably looked after by Hannan Hossain, his visiting carer, who spent over 15 years looking after Maurice. After a brief illness 18 months ago, that left Maurice physically very frail, he was moved to Newbury Grove Nursing Home close to his family and very near to his daughter. The last 14 months he was well cared for and adored by the specialist and wonderful nursing home care staff, who grew very attached to the gracious, polite, happy gentleman that he always was and his lovely smiley face.

Carolyn Tilbury (Maurice's daughter)

End of Broadham Saga in Sight?

Works to improve road safety at Broadham, leading eventually to removal of the temporary traffic lights, are now under way. In September the road underwent 'remedial checks, cleaning of the road surface and gully emptying' as a first stage, before application of an anti-skid, special surface treatment, overnight on Friday 29th September. Unfortunately this involved complete closure of the road at very short notice, but avoided the need for a daytime closure.

The rest of the works should be possible under the existing traffic lights without the need for a further road closure. The County Council say these works 'will be completed as soon as practicable before the on-set of the Autumn/Winter season so that the temporary lights can be removed'.

Landcare Services
 Environmentally Sensitive
Tree Surgery
 All Types of Tree Work Undertaken
 Contact Zeb or Clare on
 Phone 01452 812709
 or 07969 918121
 Clareoverhill@phonecoop.coop
 WWW.Treesandlandcare.co.uk

PAUL A MORRIS
General Builder Ltd
 Extension: Renovation: Stonework
 Kitchens: Bathrooms: Patios
 Dry-Stone Walling: Plumbing: Plastering
 Over 25 years experience

paulmorrisbuilderltd@gmail.com
www.paulmorrisgeneralbuilding.co.uk
 01452 814524 or 07818 087375

GODDARD'S GARAGE
 Cheltenham Road, Painswick

- * Full servicing & repair facilities
- * MOT preparation & repairs
- * Private hire - taxi
- * Petrol / Diesel / Tyres / Exhausts
- * Paraffin / Coal / Calor Gas
- * Car valeting
- * Air conditioning

Personal attention for your car
01452 812240
goddards.garage@hotmail.co.uk

Michael Gamble
Funeral Directors

Proudly serving the local community since 2008

- 24-hour service
- Bereavement advice
- Transparent pricing
- Private tributes of rest
- Floral tributes
- Memorial masonry
- Home visits
- Prepaid funeral plans

Stonehouse
01453 802 685
 50 High Street
 GL10 2NA

Stroud
01453 790 900
 Station House, Station Road
 G15 3AR

Call us for immediate support, advice or to arrange a home visit. We are here to help 24 hours a day.

www.michaelgamble.net

Painswick Gardening Club

Our next meeting - 11th October in The Town Hall at 6.45pm

After our successful visit to the Rococo Garden we are now returning to our regular meetings on the 2nd Wednesday of each month in the Town Hall.



On 11th October Vanessa Berridge will be talking about the organisation of the National Gardens Scheme in Gloucestershire. She is the County Organiser and a freelance writer focusing on gardening, garden history and food. Her garden in Winchcombe is open in July under the Scheme.

We will also be collecting the annual subscription of £25. Payment can be made by cash or preferably by BACS. Payment details are:

Painswick Gardening Club Sort Code 3098929; A/c No. 00280185; Ref: Your surname Reg Fee

The Town Hall will be open from 6.45pm for the registration of members. Refreshments will be available and the talk will start promptly at 7.30pm.

Visitors are always very welcome at our usual charge of £4 per person. We look forward to seeing you.

Philippa Miller

Justice at Last

In December 2021 a particularly nasty robbery took place right in the heart of Painswick, namely in Longfield, our much valued charity shop in Bisley Street. The manager, Val, was serving a local customer when a man entered the shop, came over to the desk, held a knife to the customer's throat and demanded the takings in the till and the money in the customer's purse - £77 in total. Needless to say, this was a terrifying experience for both Val and the customer.

Val gave the police a very good description and a reconstruction was filmed for BBC's Crimewatch Live which helped to identify the culprit who was eventually found. It is good therefore to report that at last the trial took place at Gloucester Crown Court in September and the offender, James Burton, aged 40, has been sentenced to nine years imprisonment.



The police Inspector who supervised the investigation said, 'This was a particularly nasty robbery ... exacerbated by the dangerous behaviour of the defendant which could have had tragic consequences.' For Painswick it was of course significantly alarming but for Val and the customer it was nothing short of terrifying. The Inspector described them as courageous and dignified throughout what was a truly frightening ordeal.

For Val it has been a long and anxious wait for the trial, and for the customer there was inevitably a period during which she suffered the effects of resulting trauma. Val explains that the police have been outstanding, 'keeping me up-to-date and so supportive to L (the customer).' She goes on to say, 'Justice has been served for Longfield and for my customer. I am delighted with the outcome as is L.' Val is a truly remarkable and courageous lady and we are lucky to have her in our midst.

Carol Maxwell

Irresistible Bargain Prices

October, and we're definitely well into autumn. Our excellent little charity shop, Longfield in Bisley Street, is now preparing for the cooler seasons by displaying warmer clothing and accessories. With limited space therefore it is necessary to remove what is essentially summer wear and for the next few days there will be an irresistible sale of what is left. Already offered at bargain prices - and our Longfield shop sells only top quality goods - even these will be further reduced.

Do go in and snap up a real bargain. It's for a few days only.

Carol Maxwell



Sounds of merriment coming from the Ostlers Bar at the Falcon on the fourth Tuesday of August indicated that despite there being no formal meeting, members of Yew Trees WI had gathered together for a most enjoyable dinner.

On another day - a hot September morning - a group of members met for a walk round the lake in Stratford Park before visiting the museum. Here they were given the most informative short guided tour which whet their appetites for a further visit very soon. Some of the party followed the tour with lunch at The Old Nelson where the air conditioning was much appreciated!

Yew Trees were delighted that their stall at The Feast proved so popular with the crowds; all the cakes were sold. Thankfully there were plenty of helpers able to hold on to the fixtures when the wind got very gusty!

"From Bletchley to the Doughnut" is the intriguing title of the talk to be given by Paul Smith at our next meeting on Tuesday 24th October. This meeting is open to everyone so do come along to The Church Rooms at 7.30 p.m.

Celia Lougher 812624

St Michaels
BISTRO
Lunches: Wed - Sun 12.00 - 15.00
Evenings: Tue - Sun 18.30 - 22.00
tel: 01452 203306
07877 282 446
marinpetre1967@gmail.com
Take-aways available


STEPWISE
FOOT CARE
Mobile service
Call Elisabeth B.Sc, FHP
07387 822770

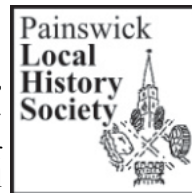
BANCROFT LIVINGSTON
— BATHROOMS —
Bespoke bathroom design and installation
jake@blbathrooms.co.uk
www.blbathrooms.co.uk
 

TB Fun and Romance

We welcomed new and old members back to the start of the new season of talks for the Painswick History society, looking forward to a talk on the Sanatorium in Cranham, by Jan Whitton. The title suggested not just a medical facility.

The Sanatorium was started in 1898 as a private hospital for TB sufferers with the first Dr's being Dr Prien and Dr Braine Hartnell, offering up to date treatment of the times, set in a beautiful countryside retreat. It was open to all ages, men, women, and children and had the main policy, that fresh air was the best treatment, with all rooms having doors open onto a Veranda, these were open all year round and one item people were asked to bring was their own hot water bottle.

Later, Dr Arthur Hoffman took over, living at Ladlecombe with his family and continuing until his death in 1929, when his wife's son Geoffrey took over until it shut in 1956. During Arthur's time, the 2 sites became one in 1924 and one of the lodges was sold to the Whiteway community and can still be seen as the village hall in Whiteway.



THE COTSWOLD SANATORIUM, CRANHAM.

Copyright Air Views by Aerofilms Ltd. Hendon, N.W.9.

The buildings were purpose built, including a laundry room with steamer, xray room, library and a sun house in the grounds that revolved to always face the sun! Rooms had plenty of light and air and patients enjoyed a good social life with whist drives weekly, dances and visiting bands, and being able to go out for drives with visitors. It even had its own magazine, the San Gazette. Prizes included silver topped canes! Residents of Cranham often invited to the dances. Peak activity of the hospital was in the 1930's with up to 120 patients and later during the war it was mainly used by military personnel. An inventory taken in 1944 listed plenty of Marmalade, cigarettes and Champagne!

Two famous people that stayed at the hospital were James Elroy Flecker, Poet, and George Orwell who completed his book '1984' while in Cranham. He was one of the first to be given the new drug for TB, Streptomycin.

The closure came as the 100-year lease expired and the building was demolished in the 1970's and the area used by the Hannis' as a farm. We thanked Jan for an insight to the sanatorium and for the chance to see photos of buildings that are no longer there.

Our next meeting is on Tuesday 17th October when Alan Pilbeam will give a talk on the 'Royal progress through Gloucestershire'.

Karen Goddard

Lots to look forward to

This month the Garden is open for visiting Thursday to Sunday 10 until 5. For all of half term (28 Oct – 5 Nov inclusive) we are open every day. It's such a lovely time of year with so much colour, vegetable harvest and the nights drawing in! For half term we have a brand-new family scarecrow-themed trail which we've been working on with local friends and businesses. You can find more detail on the news pages of our website rocogarden.org.uk. Why not treat yourself to a change of scene, a freshly-ground coffee and a wander around this gorgeous, historic place with someone special?



Looking ahead, you may have visited our beautiful willow-sculptured friends during the summer holidays. Now, brand new for this year, is the unique opportunity to see them charmingly lit up by night as we open the Garden slightly later in the day. The Enchanted Garden by Night is our latest classy experience for Garden visitors. Come and make memories this Christmas as you meet dancing fairies, mischievous boggarts, magical unicorns and friendly dragons. They will all be elegantly illuminated against the background of our beautiful Garden. Wrap up warm and gather friends and family to enjoy a special evening together. With numbers strictly limited by advance booking only, this promises to be a lovely, good-value Christmas treat. Admission tickets for selected dates in December and January are available from rocogarden.org.uk.

Whilst our conservation work on the Exedra has had to be delayed due to our scaffolder being unwell, the Red House received a new coat of paint in a stretch of dry weather last month which is looking very crisp indeed! As a charitable trust, it's part of our work to conserve all aspects of Rococo for future generations. The maintenance of our Garden buildings are an integral part of that work.

Happy Autumn to you and I hope you do find time to visit the Garden.

Tim Toghil, Volunteer

PAINTING & DECORATING

Domestic & Commercial
Internal & External
Gloucestershire & Cotswolds
Based in Painswick
Detailed quotes
Fully insured

Call Ken Ticehurst
07808 511066
glospaint.co.uk

Your local area electrician

 **MJBoon**
Electrical...

☎ 07773 626241
✉ matt@mjboonelectrical.co.uk
🌐 www.mjboonelectrical.co.uk

- Free estimates and advice
- All aspects of electrical work undertaken

 APPROVED CONTRACTOR

Peter Barnfield
Painter & Decorator

All Interior, Exterior + most DIY work
30 years experience



Tel: 01452 610199
Mob: 07881 408380
Email: Barnfield.peter2@gmail.com

Guided Walks with Cotswold Wardens near Stroud

Thursday, 12th October, 2023 – Start: 10:00 am. Bee Boles And Other Things

Difficulty: moderate Duration: 3 hours Distance: 6 miles

Start point: "Queen Matilda" Pub., Avening, near Tetbury GL8NT.

Please park considerately in the village.

This is a relatively level walk with one short steep descent passing through the villages of Cherington and Nag's Head.

Tuesday, 17th October, 2023 – Start: 10:00 am

Oakridge Lynch to Bisley by Water Lane and return via Money Tump.

Difficulty: Moderate Duration: 3.5 hours Distance: 7 miles

Start point: park on the road near to "The Butchers Arms" at Oakridge Lynch, GL7 3NQ.

The quiet village of Oakridge Lynch is our start for this circular walk taking us along Waterlane to the Giant's Stone at Battlescombe, then on to Bisley with its legend come hoax of the Bisley Boy. From there we return across the fields passing Money Tump, through Bournes Green to Oakridge.

Wednesday, 25th October, 2023 – Start: 10:00 am. A Nailsworth ramble

Difficulty: moderate Duration: 2.5 hours Distance: 3.5 miles

Start point: "King George V" playing field (KGV) GL6 0HT car park.

This is off Park road & Wood lane, Nailsworth.

This is a relatively short stroll around the small town of Nailsworth including the peripheral hamlets of Watledge, Windsoredge and Shortwood. We take in the local football club at Forest Green and a nature reserve with superb views over Shortwood and beyond.

Tuesday, 31st October, 2023 – Start: 10:00 am

Slad valley – walking with Rosie

Difficulty: Strenuous Duration: 2 hours Distance: 4 miles

Start point: Bulls Cross lay-by, on the B4070, north of Slad Village

We will follow a large section of the Laurie Lee Wildlife Way, incorporating some lovely views over the Slad valley, as unspoilt today as it was 100 years ago.

Annual Meeting / Winter Work Programme.

Our first annual meeting as a registered charity was attended by nearly forty people. The first part of the evening was summaries of the cattle activity, finances and work party achievements over the last year. After an interval with drinks and cakes we were treated to a stimulating talk by Dr. Kathy Meakin entitled "Is nature conservation dead? Wilding and Nature Recovery." In it she explained how conservation of small sites is evolving along side the need to create landscape scale connectivity. Small SSSIs are the arks containing wildlife we wish to protect. By creating suitable conditions around these sites this wildlife will be able to spread outwards and flourish. Whilst PBCG has primarily been concerned with grassland management, scrub, the transition between open grass and mature woodland is a highly desirable habitat particularly for birds, mammals and reptiles. However, as we well know, if left unchecked this will result eventually in dense secondary woodland with a corresponding drop in biodiversity. Controlling this scrub is hard work as our volunteers well know, but large herbivores will do the work for free over a number of years. Our long term objective is to keep the cattle on the Beacon all year round. This will require careful management; keeping them off the best areas of flower rich grass during the summer but giving them access to recently cleared areas we are trying to restore so they may browse on rougher vegetation and scrub.



Work parties have started again for the winter, every other Saturday from 09:00 – 12:30. As always we are always looking for more helpers. The Beacon is a large site and there is a huge amount to do, so, the more the merrier. Please call me on 07971 633 242 if you would like to help.

The perfect grassland has a thin covering of light scrub, so this winter we will be revisiting areas cleared 4-5 years ago to remove 50-75% of the scrub, starting with the largest and working downwards. Brambles and invasive plants will be brush cut back and larger trees felled to allow more light to penetrate. We will also be improving tree diversity by transplanting saplings sourced on the Beacon, relocating junipers from the scrape and planting out thyme plants for the large blue reintroduction project.

Paul Baxter

Exedra Nursery
PAINSWICK | GLOUCESTERSHIRE

- Perennials grown on site
- Peat free plants and composts
- David Austin Roses
- Shrubs, alpinas, herbs and more
- Gardening gifts and accessories

Painswick Rococo Garden Open Tues – Sun
Stroud GL6 6TH 10am to 4pm
Tel 07487 537026 www.exedranursery.co.uk

Dr Hauschka Organic Facials

Your friends will ask enviously if you've "had work done..." But you'll smile secretively, knowing you look great, naturally.

Book yourself a Dr Hauschka treatment with **The Organic Beautician** and treat your skin to the visible difference

text 07961 224560
jane@theorganicbeautician.com

Mention this ad when booking for a free Cleansing Cream
Based in Pitchcombe since 2007

GROUNDWORKS - DRAINAGE
EQUESTRIAN WORKS
LAKES - PONDS - WATER FEATURES
FENCING - DECKING - HEDGING
DRIVEWAYS - PATIOS
TRADITIONAL BUILDING WORK
ALL PASSIONATELY UNDERTAKEN

GROUNDWORKS LANDSCAPING **PLEASE CONTACT**
BLC **BEN LIVING**
BUILDING PROFESSIONALS 01452 812036
enquiries@bhc.uk.com 07702 984711
www.bhc.uk.com



In October this year we don't have a film to show but we'll be back on Friday 10th November so be sure to put the date in your diary.

If you are a regular at Wick-Flix you'll already know that we are a group of volunteers who form a committee to choose the films we show, to distribute the posters, we then have more help to set up the room on the Friday afternoon and even more help on the night to ensure your evening is as good as it could be. If you think you could help out with anything ... maybe you are a regular cinema goer and could give us an opinion on the latest thing at the pictures so we could consider it as a Wick-Flix film or perhaps a real 'tech' wiz to help the on the night presentation go without a hitch.

We are considering a few of the latest films for the New Year but the success of Netflix and Amazon Prime can significantly delay the availability of films which have been successful at the box office as they are not available for licensing to show to the general public by organisations like ourselves and some films which are made for these new comers to the film industry may not be available at all. This means we can't give you a firm date for Barbie or A Haunting in Venice, the latest Kenneth Branagh Agatha Christie adaptation much as we would love to be able to fix our diary through to March 2024, it's just not possible so you'll have to keep an eye out on FaceBook, here in the Beacon and for posters around the windows of Painswick.

So don't forget – The Unlikely Pilgrimage of Harold Fry on Friday 10th November. If you still haven't seen the great redecoration work at the Beacon Hall why not make that the night you come to see what's been going on.

Dawn Tyson, Wick-Flix@Painswick Centre

Juniper Hill Field

The Friends of Juniper Hill Field have been working hard over the last six months to investigate every possible avenue for challenging the plans of Woodlands.co.uk, the company which has bought the beautiful 20 acre field which lies in the middle of Frith Wood. Our efforts have won national coverage in an article in The Guardian by Patrick Barkham and was on BBC Radio Gloucestershire on September 19th.

For those unfamiliar with the backstory, the field was sold two years ago to Woodlands.co.uk who have since divided it up into five plots and the first has gone on the market at a hugely inflated price. Woodlands.co.uk are marketing the plot as an opportunity to conserve a meadow and offer prospective customers the chance to build a cabin where they can stay up to 28 nights a year. Access would be through Frith Wood from the Slad road.

We have raised concerns with Gloucester Wildlife Trust who manage the Frith Wood SSSI that increased leisure vehicles of potentially five plot owners and their friends will damage the trees and compromise the tranquility of this stunning starting point to so many walks.

Of equal concern is that the field has now not been grazed for more than two years and the scrub and brambles are growing fast. Woodlands.co.uk has shown little understanding of how these now increasingly rare Cotswold grasslands need to be maintained with a regime of light grazing such as on Edge Common and the Painswick Beacon. At risk is the wonderful richness of plant and wild life evident on the field.

Woodlands.co.uk have erected intrusive fences, gates and heavy padlocks including a narrow corridor path, depriving many of those who have walked the field for decades of the paths they cherished.

We are now pursuing a number of planning issues with Stroud District Council and are grateful to Gary Luff, our councillor for his interest and advice. Please visit the website www.savejuniperhillfield.co.uk to read more and find all your questions answered and please sign up so we can keep you informed.

We are inviting those interested to meet at Bulls Cross on October 8th at 11am to walk up to the field and to visit what we believe is one of the most beautiful views in the Cotswolds. Cakes and Biscuits provided. This will be a chance to hear from the Friends what they have been doing and to see for yourself what Woodlands.co.uk have been doing on the field.

Madeleine Bunting, Friends of Juniper Hill Field.

Shire Hall falls silent for Keith Rippington

A minutes silence was held were tributes paid to Keith Rippington, former County Councillor representing the Painswick and Bisley Ward (2017-2021) as a Conservative, Liberal Democrat and finally Independent who had died earlier in the month (September).

Among the tributes Councillor Susan Williams said:

“Every time I met him I was struck with his sincerity and how determined he was to make a difference in his community and the county. I would like to offer my condolences here now. He was a lovely, lovely gentleman.”



**Julian Telling
Garden Services**

****New Service - Green Waste Collection****
We supply 1 bulk (tonne) bag
You fill it, then call for collection - £20.00

Tree Felling, Pruning & Maintenance, Fence Maintenance & Erection, Lawn Cutting, Strimming, Turfing, Weed control, Hedge Cutting & Shaping, General Garden Clearance
Gutters & Patios cleaned, Exterior Decorating

07895 224863
Juliantelling@yahoo.co.uk

HUNTER • PEARCE
D E C O R A T I N G

Reliable and Professional Service
Interior and exterior work
Paint and colour advice upon request

CONTACT

☎ 07733434773
✉ info@hunterpearce.co.uk

SALLY ELLWOOD
LIME

Lime wash, pointing, render and plaster for period and listed buildings.
Art and design.
Tuition and consultancy.

07940 108 333
www.sallyellwood.com
info@sallyellwood.com

Foodbank

Thank you to everyone who made our September collection successful!

Our next collection will be on Wednesday 18th October from 10 am - 12 noon. Please note that we will only be collecting in the car park on Stamages Lane. If you have difficulty getting to this donation point, please let us know and we will do our best to help.

Please may we ask for some of the following: Fray Bentos pies, corned beef, jam, peanut butter, Marmite, tinned custard, tinned rice pudding, biscuits, chocolate bars, shampoo and conditioner, shower gel, razors and shaving gel, toilet rolls, household cleaning sprays, laundry detergent, nappies sizes 4,5,6 or 7.

If you wish to make a bank donation, you can do so using the following details:

Stroud District Foodbank CIO
Sort code: 09-01-29
Account: 21994911



The Foodbank Team
Mobile: 07950 651228

Open Workshop

Painswick Art Club is hosting an OPEN Workshop "Acrylic Landscapes" with Jackie Garner on Tuesday morning, 10th October. This will be in the Painswick Church Rooms starting with coffee and set up at 9:30 am, session 10 - 12 pm followed by clear-up, finishing by 1 pm.

This workshop will also work with watercolour or oils, so bring the materials and paper you normally use for landscape. There will be some materials available. We will have materials for beginners.

Visitors are welcome @ £10 for the session. New Members are always welcome, membership is £30 a term of fifteen sessions. If you are interested in joining us for this Workshop, please contact our Chairman, Jane Marsh on 01453 752655 or Secretary, Joyce Barrus on 01452 812942.

Joyce Barrus

Property report

New properties on the market this month range in price from £185,000 to several at over a million. To start with the less expensive properties, there is an opportunity to buy one or both of two flats in Yew Tree House, overlooking the churchyard in New Street. Both Flat 1 (Murrays, £185,000) and Flat 2 (Murrays, £200,000) have two bedrooms and lovely views. At the other end of the market, Capp Mill on Kingsmill Lane was briefly available for the first time in nearly half a century, but Hamptons quickly found a buyer for it, as they did for Fourways, a contemporary detached home in Queens Mead, also offered at well over £1 million. Smalls Mill in Pincot Lane (Murrays, £1.25 million) is still available at the time of writing, as is Mead End House in Cotswold Mead (Murrays, £1.1 million) and Stable Courtyard at Painswick Court (Hamptons, £1.65 million).

The typical Painswick property though is still somewhere in the middle. Bramble Cottage in Vicarage Street, an end terrace 2 bedroom cottage, has been beautifully renovated to create spacious and light rooms (Murrays, £425,000), while at the same price, Flat 12 in Gyde House (Murrays, £425,000) has two bedrooms, lots of character and shared landscaped gardens. Station House in Cheltenham Road, once part of the Fire Station, is detached with 3 bedrooms, gardens and parking (Murrays, £775,000), The Hayloft, 4 Ivy Lodge Barns is a 3 bed detached barn conversion in Birdlip (Hamptons, £525,000) and Wellgrove in Paradise is detached with 3 to 4 bedrooms, indoor and outdoor cinema rooms, a gym and a hot tub area (Murrays, £875,000).

As well as the properties mentioned above, contracts have been exchanged on Flat 3 at Hyett Orchard and Sen Sook at Sheepscombe (both Hamptons), while sales of Lovedays House in St Mary's Street, School House in Stroud Road and Freshfields in Cotswold Mead have completed (all Murrays).

While the Painswick property market has remained relatively buoyant since last year's mortgage crisis, it does now seem to be slowing. Murrays are reporting evidence of a reduction in viewings and buyers and the latest market forecast from Hamptons, available on their website, suggests falling prices in 2023 and stagnation in 2024. Price falls may be relatively limited in absolute terms, but more significant in real terms given high inflation.

MURRAYS
SALES & LETTINGS

Leading property agents for the
Stroud Valleys and Severn Vale

We pride ourselves on our personable and professional approach, offering new and innovative ways to market your home

Contact James or Richard Murray

Offices in Painswick,
Stroud, Minchinhampton
and Mayfair, London

Painswick office: 01452 814655
www.murraysestateagents.co.uk

WITH YOU
FOR EVERY
STEP

Sales 01452 812354
Lettings 01242 263559
painswick@hamptons.co.uk

Hamptons
THE HOME EXPERTS

three gables
dental, holistic + beauty centre

- ▷ PREVENTATIVE AND COSMETIC DENTISTRY
- ▷ BEAUTY/FACIAL REJUVENATION
- ▷ STEPPING-STONES OSTEOPATHY

All in a relaxed and friendly environment with early, late and Saturday appointments available. On-site parking also available.

LET US BRIGHTEN UP YOUR SMILE

cheltenham rd painswick glos GL6 6XN
01452 814427
www.thethreegables.co.uk

Painswick Sports

assembled by John Barrus

Team successes for Painswick Golf Club

Painswick A Team secured their place in Division 1 for next year following a final day shoot out against Stinchcombe Hill. A closely fought match ended with Painswick securing a 4 – 2 victory. This guaranteed Painswick would stay in the 1st division and Stinchcombe relegated to Division 2.



Painswick home form was key to their success with 4 wins, 1 draw and only 1 loss albeit against the eventual league winners Cotswold Hills.

The B Team are currently top of their division with 2 games remaining.

In other news the seniors have reached the semi final of the County Seniors Scratch Foursomes. The Team, led by Finlay McLean, have enjoyed good wins against Henbury and Knowle. They now head to Puckrup for a semi final against Long Ashton Golf Club. Cirencester and Cotswold Hills will compete the other semi final.

Peter Rowe

Table Tennis

Table Tennis will resume from October 11th, every Wednesday 7.30pm – 9.00pm



All are welcome and GBP£5/person/session

Full equipment is provided.

Contact David Harris 07453 027766

Badminton Club

The Club is now up and running twice a week in the Painswick Centre. There are currently one or two spaces for juniors on Mondays 7-8pm, but not suitable for complete novices. Contact Rachel Bolt on rag.bolt@btinternet.com. New adult members welcome please contact Mahboob Hussain email smh801@gmail.com



Painswick Cricket Club – End of season wrap up

Our first team maintained their West of England Premier League (WEPL) Premier Div 2 status scoring victories over several illustrious opponents including Cheltenham, Thornbury and Hatherley and Reddings. The side managed to secure a marvellous last league match victory over Royal Wotton Bassett by 112 runs. Luke Woolway (127) and Jarren Bacher (54) leading the way run wise plus Jonathan Conolly taking 4 wickets. A mighty well done to Jack Hobbis, the first team skipper for all his efforts in leading the side to a credible 7th place during our first season at this level.

Woolers!

Our fab first team coach, Luke Woolway (Woolers) has won the divisional player of the year for the Premier Two Gloucestershire & Wiltshire division. Congratulations Woolers on an amazing achievement.

Our seconds finished mid-table in County 7 having at one point threatened to challenge for promotion. Unfortunately they fell away somewhat at the end of the season; however, Andy Barnard claimed 6th spot in the batting within the division. Emily Austen took 16 league wickets and finished 12th overall in the division. A huge thanks to Nick Marment for captaining the side.

The thirds battled on bravely as always and refused to finish bottom of Stroud Division One. Skipper Noel French was excellent in regard to allowing our youngsters to really be involved in matches and develop their cricket. They go again next season in Div 2.

The club regained the Stroud Fayre Cup and had several decent

efforts in several other cup competitions. This has whetted the appetite for next season.

Youth highlights and our all new U19s

The top highlight from an individual has to be Charlie Mayo for his fab hat trick against Stroud u13s, well done Charlie. Secondly, a big shout out to Thomas Wager for strongly representing both the u11s and u13s every week, well done Thomas. Head of the Youth section, Dom Barnard would like to thank all his coaching assistants, parents and helpers who attended Friday night training and supported matches.

A successful first season for the Painswick & Gloucester CC combined u19s. After a convincing win against Golden Hill cricket club the team reached the final of the Glos Youth League T20. A good achievement in their first season, hopefully they will build on this for 2024.

Girls and Ladies cricket

The club has continued to develop its Ladies and Girls cricket section. Several Ladies played throughout the season in our adult Saturday sides and many girls were involved in our mixed youth teams. This season saw our U15 girls become a more competitive side winning several matches and finishing 5th in the U15 Gloucestershire North league. A big thanks to Adam Brown for all his efforts. In light of much interest, Luke organised a taster session for ladies cricket. This was well attended and met with much enthusiasm. Luke will be organising further training sessions in the New Year.

Finally, thank you to all of you who support the club, we couldn't do it without you, Winter well and see you in 2024!

Steve Pegrarn

Cherry Tree Glamping



Four beautiful and fully-equipped lodges, each with a hot tub on the veranda.

Adjacent 2 acre campsite with 19 electric hook-up points and huge communal area.

Available individually or either site exclusively for weddings, special birthdays or family get togethers. Showers and toilets.

Please call Bev: 07717 721213
www.cherrytreeglamping.co.uk
Sunflower Cafe:
Tuesday-Sunday 07341 903745

CLARICO EXTERIOR CLEANING



WINDOW CLEANING

High reaching water-fed pole system (suitable for delicate windows)

SOFFITS, FASCIA & CLADDING

GLASS VERANDAS

CONSERVATORIES & ALIKE

SOLAR (PV) PANELS

£5 Million Public Liability Insurance



Husband & wife team, Dan & Lois

"We'll always notify you the day before we're due"

T: 07552 398638
claricoexteriorcleaning@gmail.com
www.claricoexteriorcleaning.co.uk

Beacon Flat Roofing

EPDM & Fibreglass specialists

New roofs / existing roof replacements and repairs

Certified installers

Ben.pearse@hotmail.com
07791 639 635



Tennis

Junior Tennis Championships

Glorious sunshine and no wind heralded the arrival of this year's Junior Championships at Painswick Tennis Club. There was a good crowd of parents and family members as well as the players as the competitions began.

There were six events across various age categories with the children calling their own scores and making their own line calls. It was great to see that this was handled with ease in most cases and the occasional issue was sorted in a sporting, fair and polite way ...yes this is still possible in modern sport!

There were some thrilling matches notably in the 12 and under girls final between Lottie and Sophie Compton. This was also the case in the round robin matches in the boys 14 and under competition which lasted several hours longer than the other tournaments!

At the end of it all silverware, medals and other prizes were presented and we all went off to cool down after a hot day of excellent tennis. Well done to all!



The winners were: Boys
12 and under Aachen Ghost
14 and under Niall Walker
18 and under Elliott Ransome

Girls
12 and under Lottie Compton
14 and under Arianne Harbord
18 and under Katie Harbord

Lissey in Tokyo Open final

Following the disappointment on just missing out on playing in the USA Grand Slam, Lissey and her tennis partner Olivia Nicholls travelled to Japan for the Tokyo Open.

A first round match saw them save a match point and eventually they won 11-9 in a tiebreak. In the next round, they had a straight forward win. The semi-final also went to a tiebreak win of 10-7.

The final was staged in the magnificent Olympic stadium. In the first set, Lissey and Liv played a near perfect game winning 6-4. In the second set the opposition changed tactics to win 1-6. The match could have gone either way with Lissey and Liv losing the tiebreak 7-10.

The British pair played really great tennis all week and now move onto Osaka for the next tournament.




Purely Paws Dog Walking

Please contact Penny
Mobile 07748 726673
purelypawsdogwalking@yahoo.com



IRONEASY

Professional Ironing,
Dry cleaning, Laundry,
Repairs/Alterations
& Shoe repairs

COLLECTION & DELIVERY AVAILABLE

Tel: 07952006820
www.ironeasy.biz

Unique
GLASS
Solutions

Glass Balustrades, Juliet Balconies
Shower Screens, Splash backs
Glass doors and Screens, Mirrors

07717 741 275
Simon@uniqueglasssolutions.co.uk
www.uniqueglasssolutions.co.uk
Painswick based

The Falcon Bowling Club.

The season at the Falcon Bowls Club came to an end on 24th September 2023, after a busy summer.



The season ended with a Triples Match between members, then Rob Goddard the Club President closed the green by taking down the flag and saying a few words, thanking the membership for its support.

We've had some very hot conditions, and some very wet ones as well. Usually when rain starts the match ends but 14 of us played an away match and were soaked as it rained throughout the match, even with wet gear on one none of us will forget in a hurry, apparently as it was only drizzle, so play could continue.

Following the closing of the green we all enjoyed a buffet and a drink in our well equipped Club House after our Ladies Champion, Jan Haslam (right), was presented by the County President, Maureen, with an award as she also plays for Gloucestershire Ladies Team.

Over the winter we will be running a series of events and these will be advertised in the Beacon as we don't just limit these activities to members only. All are welcome.



Why not think about coming to see us and have a go, when we reopen the green next Spring. It's a game anyone can play and not just for the older generation! It's fun, frustrating, it also can be competitive and is great exercise, The British Heart Foundation do suggest that it's ideal exercise for someone with heart problems and I can personally vouch for that.

If you'd like to know more, your welcome to contact me Suzi Pockett by email which is suepockett@icloud.com

Suzi Pockett

PLANNING MATTERS

Information received from the Parish Council

NEW APPLICATIONS

S.23/1607/HHOLD
Washbrook Mill, Edge Road
Replacement garage. Resubmission of S.22/2235/HHOLD

S.23/1610/FUL
Worgans Barn, Folly Lane
Erection of agricultural pole barn. S.23/1709/FUL

Lullingworth, Stroud Road
Installation of a 42 panel ground mount solar pv system. Resubmission of S.23/1295/FUL.

S.23/1730/CPE
Beechwood, Cheltenham Road
Change of use of land from agricultural to residential for a period in excess of 10 years. S.23/1734/HHOLD

Verlands, Vicarage Street
Erection of a replacement single storey extension. S.23/1777/LBC

Southfield House, Vicarage Street
Retrospective application for internal alterations to provide improved staircase and open up hallway. Modifications to main rear and utility entrance doorways including provision of internal w.c.

S.23/1799/TCA
Yew Tree House, Vicarage Street
Tulip tree - pollard to 4.0m.

S.23/1786/TPO
Greenleas, Stroud Road
G.1 3 Scots pines - fell. G2. Birch - fell.
Cherry - fell. Ash - fell.

S.23/1833/TCA Bay Tree House,
Far End, Sheepscombe
(1) Alder - Pollard to near previous leaving lower trimmed branches.

S.23/1812/HHOLD Millbrook House,
Kings Mill Lane
Erection of gates with stone faced pillars and curved drystone wall.

CONSENT

S.23/1401/HHOLD
Little Acre, Cheltenham Road
Erection of front and rear dormer windows.

S.23/1417/LBC
Dean Rise, Stroud Road
Enlargement of one first floor window.

S.23/1403/HHOLD
Springfield, Catswood Lane
Erection of an outbuilding (retrospective).

S.23/1364/HHOLD
9 The Croft, Painswick
Proposed first floor rear extension and loft conversion.

S.23/1461/HHOLD
Chartwell, Back Edge, Lane Edge
Erection of a single-storey and two-

storey side and rear extensions, with integral double garage and rear garden terrace. Existing dwelling to be clad in natural stone.

S.23/1494/VAR
Dutchcombe Farm, Yokehouse Lane
Variation to condition 2 (approved plans) from the application S.20/1654/FUL for Replacement dwelling and access. Variation proposed addition of a porch and stone chimney to replacement dwelling.

S.23/1351/HHOLD
11 White Horse Lane
Erection of single storey extensions to side and rear.

S.23/1536/TCA
Downton House, Gloucester Street
Prune Yew tree (T1) by 15 - 20 cm.

S.23/1630/TCA
22 Gloucester Road
T1 (Ash) - fell. T2 (Ash) - reduce height by 20-25 feet.

WITHDRAWN

S.23/1341/FUL Skinners Mill
Cottage, Stepping Stone Lane
Change of use of an agricultural building to residential dwelling (C3 dwelling)

S.23/1511/HHOLD
Beech View, The Park
Erection of a rear extension and alterations to landscaping.

Additional copies of the Beacon

are available from the Premier shop or online, where the Beacon can be seen in full colour at www.painswickbeacon.org.uk

Disclaimer

The Beacon does its best to verify information published, but does not take any responsibility for the accuracy or reliability of information provided by other contributors. Paid advertising is accepted in good faith and we disclaim all liability for goods and services on offer.

Regular Village Activities. Please contact Vicky Aspinall on cvasp.26@gmail.com

Mondays	Gentle pilates. Info from Heidi 07970 262538	Painswick Centre 8.45 - 9.45am	
	Improvers pilates. Info from Heidi 07970 262538	Painswick Centre 9.50 - 10.50am	
	Beginners/improvers pilates. Info from Heidi 07970 262538	Painswick Centre 10.55 - 11.55am	
	Ballyhoo modern dance classes (primary grade modern). Info from Julie ballyhoochalford@gmail.com	Painswick Centre from 3.45pm	
	Community Choir. Contact sophie@sophiesterckx.co.uk	Painswick Centre 7.00 - 8.30pm	
	Short Mat Bowls. All equipment provided. 2.00/session	Town Hall 2.00 - 4.00pm	
	Mindful Meditation with Kate. www.kate-beatty.co.uk/07793126234	Painswick Centre 12.30 - 1.00pm	
	Painswick Singers. Contact Jean Jones 01452 813545.	Richmond 7.30pm	
Tuesdays	Painswick Bootcamp. Details contact Becca Meadows 01452 451505 or info@beccameadowsnutrition.co.uk	Broadham Field Rugby Pitch 7.30 - 8.30pm	
	Drawing classes. Info from Susan Skester skester@outlook.com	Painswick Centre 9.30 - 12.00pm	
	Zumba with Martina 07891 194396	Painswick Centre 9.45 - 10.45am	
	Painswick Art Club	Church Rooms 9.30 - 1.00pm	
	Rococo Sprites. See www.rococogarden.org.uk	Rococo Garden 9.45 am	
	Wednesdays	Strength and Balance class for the over 60s. Contact Trish Tenn on 07956 4666617 or tennpatricia@gmail.com	Painswick Centre 10.00 - 11.00am
		Painswick Bridge Club. Contact Peter Sibley on 812126 or Margaret Wilson on 812305	Church Rooms 7.00pm
		Table tennis. Contact David on 01452 812464	Painswick Centre 7.00 - 8.30pm
Yoga with Kate. www.kate-beatty.co.uk/07793126234		Painswick Centre 7.30 - 8.45pm	
Classical Pilates Mat Classes with free taster. Contact Jo on 07968 799741 or josephinedaley@me.com		Church Rooms 12.30 - 1.30pm	
Strength and Conditioning Circuits. www.lovelifeladies.co.uk		Painswick Centre 12.30 - 1.30pm	
St Mary's Mums - for mums, bumps, babies and toddlers. Contact 07833 727701		Church Rooms 9.15 - 10.45 am	
After school art classes. Email classes@painswickcentre.com . Term time only		Painswick Centre 3.45 - 5.15pm	
Thursdays	Morning Market	Painswick Centre 8.30 - 9.30am	
	Nurturing yoga. Contact Kim on yoginikim@icloud.com	Painswick Centre 9.30 - 11.00am	
	Vinyasa Yoga. Contact Kim on oginikim@cloud.com	Painswick Centre 11.15 - 12.45am	
	Tai chi. Contact Joe on 07960 753782	Painswick Centre 1.30 - 2.30pm	
	Dog Training Club. Contact Fiona Chapman on 01452 812462 or fiona.chapman123@btinternet.com	Church Rooms 10.00 - 12.00pm	
	Qi Gong Classic Exercise - contact Jeff Docherty on jeffdocherty@yahoo.com	Town Hall 9.30 - 10.30am	
	Classical Pilates Mat Classes. Contact Jo on 07968 799741 or josephinedaley@me.com	Town Hall 5.45 - 6.45pm	
	Takeaway Food Night	Painswick Centre 5.00 - 8.00pm	
Fridays	Yoga for Backs. Contact Kim on yoginikim@icloud.com	Painswick Centre 9.30 - 11.00am and zoom	
	Ballet with Claire Tracey. Contact BalletClaire@outlook.com	Church Rooms 9.30 - 10.30 am	
	Painswick Community Hub Café: serving tea, coffee and homemade cakes. All welcome	Town Hall 10.00 - 11.30am	
	Church Choir Practice. Contact Chris Swain cgsivain@btinternet.com or 01453 822998	St Mary's Church 5.30 - 6.30pm	
	Classical Pilates Mat Classes. Contact Jo on 07968 799741 or josephinedaley@me.com .	Church Rooms 11.00 - 12.00pm	
	Tea, cake & watercolours art course starts April 14th for 6 weeks	Painswick Centre 2.00pm	
Sundays	Painswick Baby and Toddler Group - Term time only	Youth Pavillion 9.30 - 11.30am	
	Mass	Catholic Church 8.30am	
	Quaker Meeting for Worship	Meeting House 10.30am	
	Aikido www.gloucestershireaikido.club .	Painswick Centre 8.30 - 11.00am	

Village Diary

Please let me know your club and society dates for the diary on cvasp.26@gmail.com

October

Sat	7 Painswick Beacon published		
	7 Heart centred singing workshop. Suggested donation £20.00.To book contact andrewjbclark@outlook.com	Church Rooms	10.00am
	7 Alaric Hall - Talk on the Wessex King Caewlyn arranged by Local History Society	Painswick Centre	3.00-4.00pm
Sun	8 Harvest Communion	St Marys Church	11.00am
Mon	9 Library Book Club	Library	1.30 - 2.30pm
Tues	10 Painswick Art Club open session	Church Rooms	10.00 - 12.00pm
Weds	11 Gardening Club: Organisation of the NGS in Gloucestershire - Vanessa Berridge	Town Hall	7.00 for 7.30pm
Thurs	12 The Arts Society: Music in Art - Sophie Matthews	Painswick Centre	10.00 for 10.45am
Fri	13 Concert in aid of 'Raising the Roof'. Gloucestershire Police Male Voice Choir. Tickets £10 available from Jane Burt 01452 810935 or Benefice Office www.beaconbenefice.org.uk	St Marys Church	7.30pm
Sun	15 Holy Communion	St Marys Church	10.00am
Tues	17 History Society: Glos Royal Progress 1535 - Alan Pilbeam	Croft School	7.30pm
	17 Cotteswold Naturalists: Textile Conservation - Alison Lister	Box Village Hall	2.30pm
Thurs	19 Stroud and District Philatelic Society:Mail and the Railways - Mike Dodd	Church Rooms	7.30pm
	19 Painswick Probus: The 2008 Icelandic Financial Crisis - Dr Alaric Hall	Richmond	10.00 for 10.30am
	19 Painswick Music Appreciation Group: Elgar - Richard Westwood-Brookes	Town Hall	2.30pm
Fri	20 Friday Club: Matson Hand Bell Ringers	Town Hall	2.30pm
Sun	22 Deadline for Beacon copy		
	22 Beacon Praise	St Marys Church	11.00am
	22 Song recital in aid of 'Raising the Roof' . Chris Hall and Robert Burgess. Free - all proceeds to Church Roof Fund	St Marys Church	3.00pm
Mon	23 Painswick Singers' Sea Songs evening	Richmond Auditorium	7.30pm
Tues	24 Yew Trees WI:From Bletchley to the Doughnut - Paul Smith. Open meeting - All welcome. Visitors £4.00	Church Rooms	7.00 for 7.30pm
Sun	29 Holy Communion/All Saints	St Marys Church	10.00am
Mon	30 Community Lunch (homemade soup, bread and cheese) hosted by Monday Walkers Pay-As-You-Feel. All welcome.	Town Hall	12- 1.15pm
Tues	31 Christian Aid 3 course Autumn supper prepared by local Chef Matt Black. Tickets 20.00Church Rooms each. Call 812966	Church Rooms	7.00 for 7.30pm

November

Weds	1 Cotteswold Naturalists: Tales of a Sussex Family Farm - Angela Lerwill Enq 07472 021517	Painswick Centre	2.30pm
Thurs	2 Stroud and District Philatelic Society	Church Rooms	12.00pm
	2 Painswick Music Appreciation Group: Walton, Vaughan Williams and beyond - Julian Elloway	Town Hall	2.30pm
	2 First Thursday Painswick presents Sue Stuart Smith to discuss her book 'The Well Gardened Mind' .Tickets from www.firstthursdaypainswick@gmail.com	Painswick Centre	7.00 - 9.00pm
Fri	3 Friday Club: Coach visit to Dobbies Garden Centre, Tewkesbury		
Sat	4 Painswick Beacon published		

The Help Group
EXEMPLARY CARE AND HOME STAFFING SERVICES

CALL OUR FRIENDLY TEAM
01285 339050
WWW.THEHELPGROUP.CO.UK

OFFERING QUALITY ASSISTANCE IN YOUR HOME...
 LIVE-IN CARE - HOME HELP & COMPANIONSHIP
 PRIVATE CHEFS & MEAL PREPARATION - HOUSEKEEPING

Your help at HOME



 **Pi Portfolio**
providing kitchen solutions

Contact Clare (Painswick based)
on 07795 802247
 to discuss your kitchen situations, problems and projects.

Initial consultation (1/2 hour) free of charge to assess your needs - for example:

- kitchen design & revamp solutions
- help with kitchen appliance selection
- kitchen storage solutions and work-surface options
- creative kitchen island ideas
- kitchen build project management help

Anne-Marie Randall
 PHOTOGRAPHY



Annemariemandallphotography.co.uk
 07815082209

Personal column

Welcome

To Claire and Nic who have moved into Columbus Cottage, Cheltenham Road, Painswick.

Condolences

To the family of MAURICE FRANCIS MAGGS who passed away peacefully on 25 August 2023 at 98 years old at Newbury Grove Care Home. His funeral was held as a celebration and thanksgiving for a long life in the Church of the Ascension, Burghclere on Monday October 2nd. [See obituary on page 12]

To the friends and neighbours of DONALD CATHCART who died in hospital on September 23rd. He was a well-known, local character in the village who had lived in Painswick for many years and previously in Slad. He had worked in Germany for some years and had very happy memories of his time there and the life-long friends he had made there. He was very independent and greatly appreciated the Community Connexions bus which enabled him in recent times to go shopping himself when he no longer drove. He was very passionate about his interests, in particular classical music, and would spend many happy hours in the Community Library before Covid listening to all the music he loved on the computer with his headphones. He was a keen member of the Music Appreciation Society and Painswick Music Society as well as a long-standing member of Friday Club and the Field Club enjoying many outings with the latter two groups. He was a life member of the Wildfowl and Wetlands Trust and especially loved to visit Slimbridge. He will be missed by all who knew him in our community.

To the family and friends of KEITH RIPPINGTON who died on 3rd September aged 67. His funeral was held on 26th September at GreenAcres Chiltern. [see report on page 16]

Lost!

Joan Warner has lost a set of keys somewhere between the Painswick Centre and Stamages Lane. If you have found them, please contact her on 07970 448426.

You could help Vicky Aspinall, if you would send information about those you know for whom a mention in the Personal Column would be appreciated cvasp.26@gmail.com

Printed in Gloucester
for
The Painswick Beacon
by
www.inkylittlefingers.co.uk
01452 751900



MINI-ADS

Mini-Ads

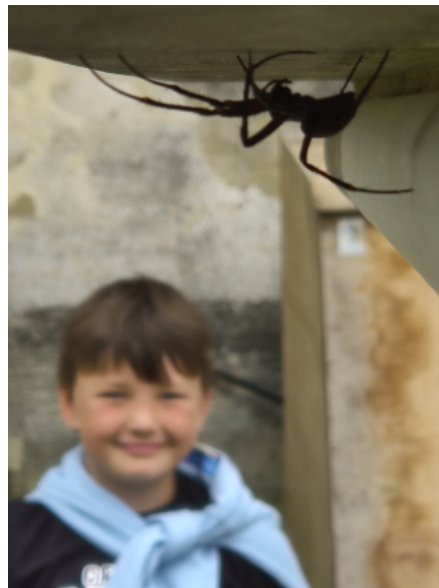
Primarily for Painswick residents. Text maximum 30 words. Flat charge £5. Free to subscribers for private sales. £5 for business use, holiday rentals. etc.

Provide text, your name, address and contact details with payment in advance. Deadline as for all copy. More info call Peter Rowe, or mail: advertising.beacon@painswick.net

Arachnophobes look away...

We spotted this huge Spider in the church yard, on the recently restored tomb of a mortally wounded warrior at the entrance to the church. I've not seen one this large before in England.

Nicholas Wells



Simon Wells admiring Spider!

Sarah Murray
English Tutor
Call: **07870 967 539**
Painswick based



Experienced teacher of English literature and language. Examiner at GCSE with extensive knowledge of how to improve grades. Specialist in raising confidence. Available one-on-one or in small groups. Adult literacy and spoken English also taught.

NEXT ISSUE

Publication date
SATURDAY
Nov 2nd 2023

Deadline for all copy
Sunday 22nd Oct

www.painswickbeacon.org.uk
for current issue and archive, the annual directory and village maps.

for editorial attention only use
beacon@painswick.net
or hard copy - preferably typed
Beacon post box - New Street

All copy must include author, address and contact telephone number. Photographs and advertising art work original at 600dpi in JPEG

The Beacon Team

Co-ordinating Editor this month

Peter Jackson 07985 002325
beacon@painswick.net

Editing Associates

John Barrus 812942
beacon@painswick.net

Alastair Jollans 814263
beacon@painswick.net

Next Month's Editor

John Barrus 812942
beacon@painswick.net

Diary and Personal Column

Vicky Aspinall 812379
cvasp.26@gmail.com

Feature writer and Directory

Carol Maxwell 813387
features.beacon@painswick.net
directory.beacon@painswick.net

Sport

John Barrus 812942
barrusjp@yahoo.co.uk

Distribution

Celia Lougher 812624
distribution.beacon@painswick.net

Treasurer

Richard Aspinall 812379
treasurer.beacon@painswick.net

Advertising

Peter Rowe 813228
advertising.beacon@painswick.net

Subscriptions

Jacek Wolowiec 813295
subscriptions.beacon@painswick.net

Painswick Feast, Clypping the Church & Clipping the Yews



The annual yew pruning

September, the month when Painswick's famous yew trees are subject to their annual pruning and general tidying up and this year the operation presented a very impressive sight. In glorious sunshine and with a clear blue sky eight employees of Tree Maintenance, the company which always does such a wonderful job, completed the work in two days.

"It's the job we least look forward to because it's such a massive challenge," said one of the men, "but it's the one which gives us the greatest sense of pride when we've finished." And looking at the end result that feeling is not surprising – the yews look magnificent. This year some impressive looking equipment was used to help with the larger and higher shapes but overall it was the sheer relentless hard work of the men which achieved the results.

Interesting to think that several decades ago one or two men were faced with the same challenge armed only with manual shears!

Carol Maxwell

